

Panasonic®

Rechargeable Vacuum Cleaner (Domestic use)

Model No. **MC-BJ870**



English

Operating Instructions

English

Contents

IMPORTANT SAFETY INSTRUCTIONS.....	EN2
Vacuum Cleaner Parts.....	EN3
Preparation	EN4
Charging	EN6
How To Use The Vacuum Cleaner	EN8
Maintenance	EN12
Changing The Settings	EN17
Product Disposal	EN18
Trouble Shooting	EN19
Specifications	EN20

Thank you for purchasing the vacuum cleaner.
Please read these instructions carefully before using the
appliance and save these instructions for future reference.

IMPORTANT SAFETY INSTRUCTIONS

Before using the vacuum cleaner, please observe these basic safety instructions.

Correct usage

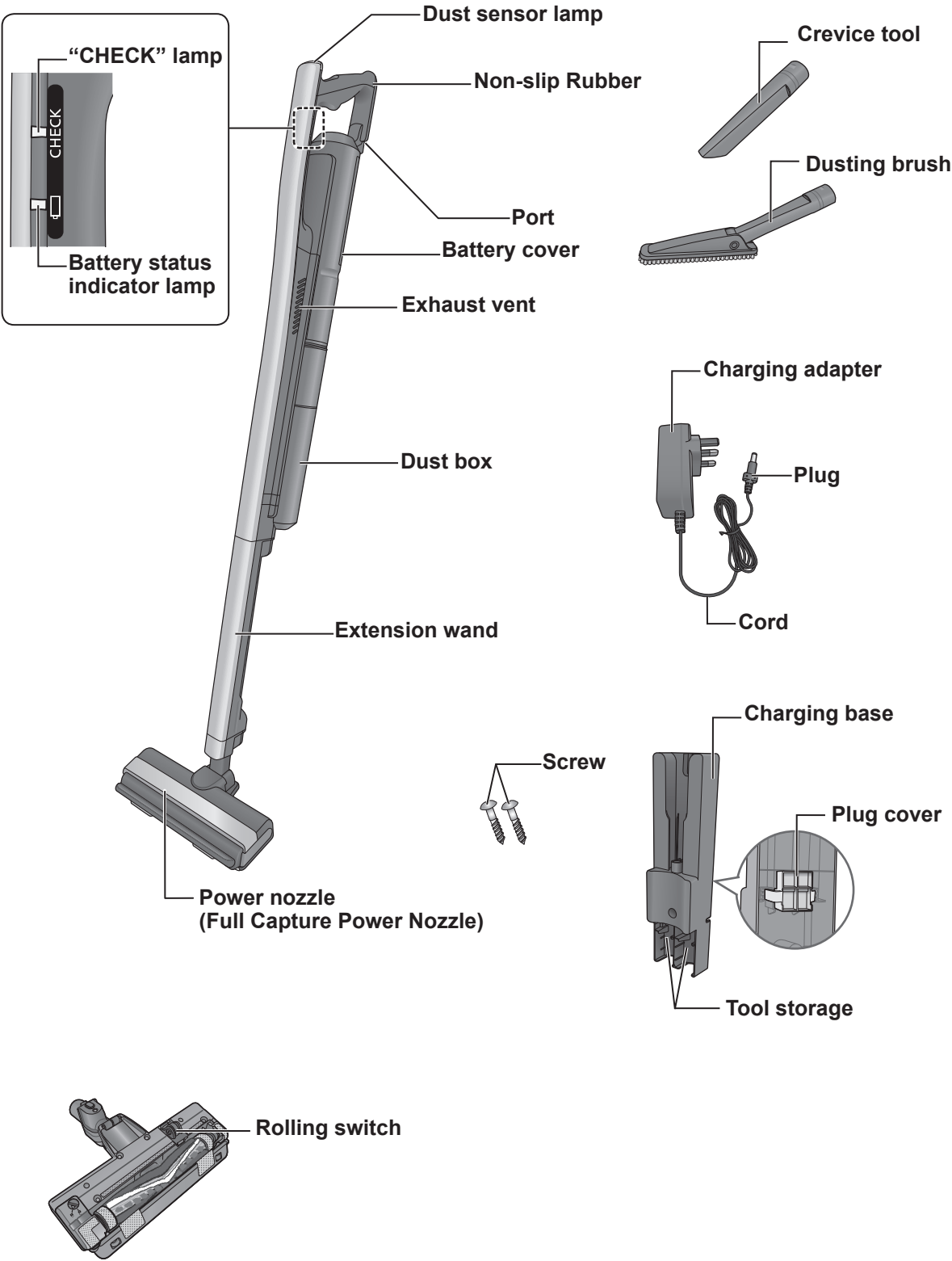
- This appliance is for indoor use with domestic purpose only and is not specifically designed for allergy sufferers. Use the appliance only in accordance with the instructions in this manual. Any other usage or modification is dangerous. The manufacturer is not liable for damage due to improper use of the appliance.

WARNING

To reduce the risk of fire, electric shock, or injury

- This appliance is not intended for use by persons (including children) with reduced physical, sensory or mental capabilities, or lack of experience and knowledge, unless they have been given supervision or instruction concerning use of the appliance by a person responsible for their safety.
- Children should be supervised to ensure that they do not play with the appliance.
- Do not use the appliance if the cord or plug is damaged or faulty.
- If the cord is damaged, it must be replaced by the manufacturer, its service agent or similarly qualified persons in order to avoid a hazard.
- The plug must be removed from the socket outlet before cleaning or maintaining the appliance.
- Turn off before cleaning or maintaining the power nozzle.
- Turn off the appliance before removing the plug. Do not pull on the cord, always pull on the plug body itself.
- Do not handle plug or the appliance with wet hands.
- Do not use the appliance on people or animals.
- Do not use wet filters after wash, make sure they are completely dry to avoid damaging the appliance.
- Do not vacuum the followings
 - Hot ash or embers
 - Large and sharp objects
 - Water or other liquids
 - Explosive materials or gases
 - Flammable or combustible materials or gases
 - Toner dust, for example, those from printers and photocopiers
 - Conductive dusts from power tool
- Keep the appliance away from heat sources, for example, radiators, fires, direct sunlight, etc.
- Do not use the appliance in areas where flammable or combustible materials or gas may be present.
- This appliance is fitted with a thermal cut-out device which automatically turns off the appliance to prevent overheating of the motor. When this happens, check the dust compartment and filters as they may be full or clogged with fine dust. Check for any other obstructions in the nozzle pipe. After removing the obstruction, leave the appliance to cool down until the thermal cut-out resets after approximately 30 minutes.
- Do not use or store the appliance or the parts at head level to avoid the risk of injury.
- Do not sit on the appliance.
- Be careful when using the appliance on staircases as the appliance may falls.
- Use the appliance where the lighting is sufficient to avoid the risk of tripping.
- For the purposes of recharging the battery, only use the detachable supply unit AMV61V-NTC.
- Do not use the charging adapter of this appliance to charge any other batteries or battery powered appliances.
- Do not store cells or batteries haphazardly in a box or drawer where they may short-circuit each other or be short-circuited by other metal objects.
- Keep cells and batteries clean and dry.
- Replace only with same Panasonic Corporation type AMV97V-NT battery pack.

Vacuum Cleaner Parts



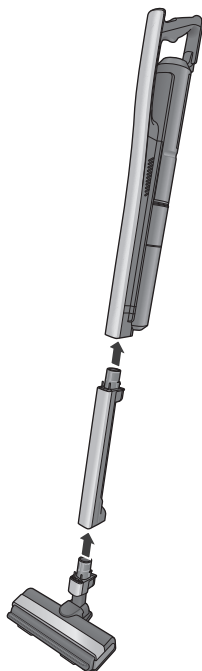
NOTE

- For safety reason, the agitator will stop functioning/working when the nozzle is lifted up.

Preparation

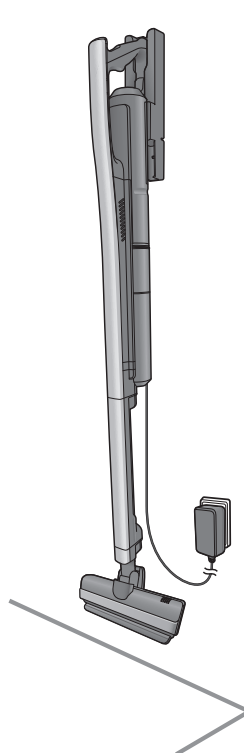
Attaching Extension wand and Nozzle

- 1 Insert extension wand into vacuum cleaner body until it snaps in place.
- 2 Insert power nozzle into extension wand until it snaps in place.

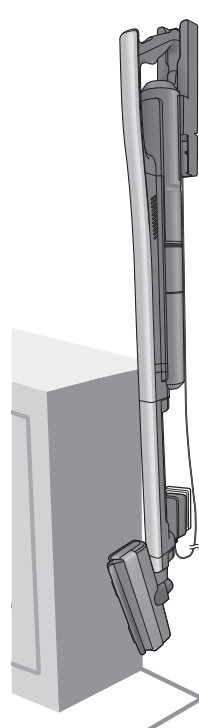


If you want to hang the vacuum cleaner to the wall, please attach the Charging base to the wall

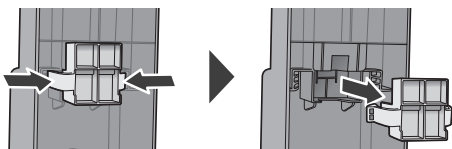
The wall is to choose a place with a thickness of 10 mm or more plates or pillars and bars on the back, please install by the supplied screws.



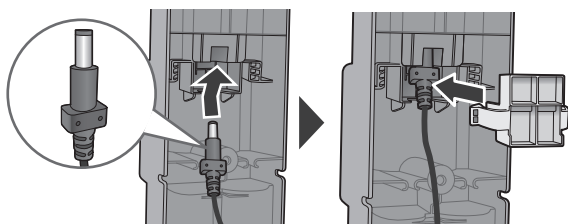
In the narrow place



- 1** Remove the plug cover from the charging base.

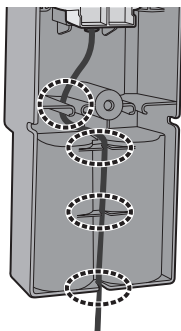


- 2** Plug the charging adapter to the charging base (behind). Reinstall the plug cover.

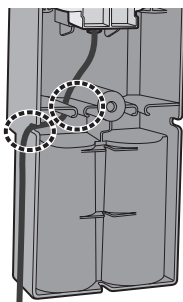


- 3** Insert the cord into the slot (⊗) in the charging base.

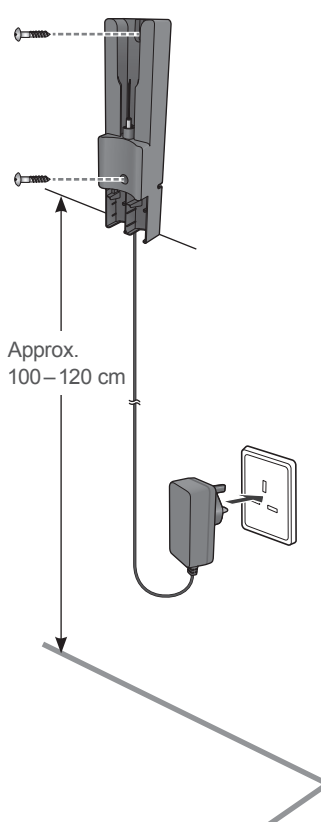
Put the code in the lower direction



Put the code in the left direction
(Put out in right direction)



- 4** Fix the screw, and then plug charging adapter into the socket outlet.

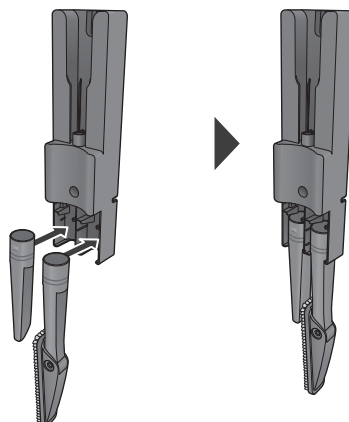


REQUEST

- Please do not pinch the code between the charging base and the wall.
- After installation, please check whether the charging base are securely installed.

Tool Storage

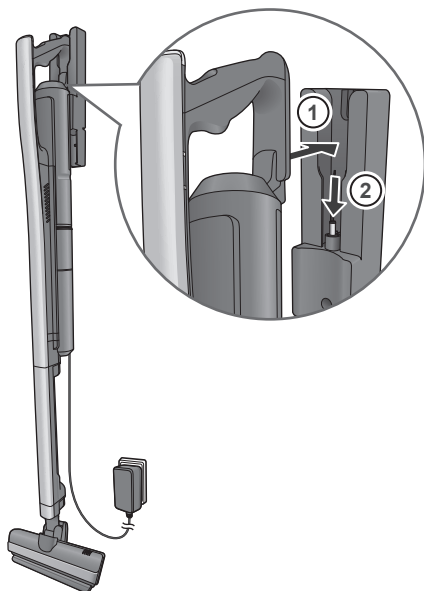
Insert crevice tool and dusting brush into slot on the charging base as shown.



Charging

The battery is not fully charged at the time of purchase, so please be sure to charge before use (charge for at least 3 hours).

Hang the vacuum cleaner to the charging base as shown below.



REQUEST

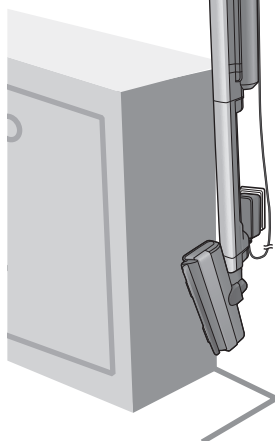
- When the battery status indicator doesn't light or goes out immediately, try putting the main unit in the charging base again.
- If interference occurs with radios or televisions, move the charging adapter at least 1 metre away.

NOTE

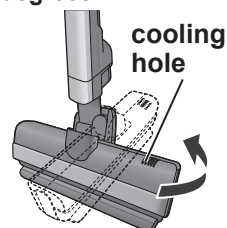
- The charging base consumes 0.5 W even when the main unit is not on it.

In the narrow place

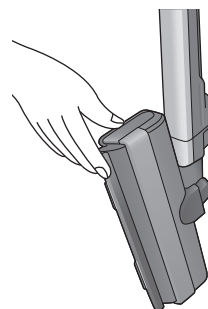
- ② Hang the vacuum cleaner to the charging base



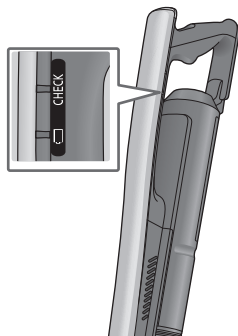
- ① Press the cooling hole side, rotate the nozzle 90 degrees



- ③ To fix the nozzle



Battery status indicator



A lighting light (blue) indicates the vacuum cleaner is charging.

When the vacuum cleaner is fully charged the light will turn off.

If the indicator does not light, lift the body and re-set on the charging base.

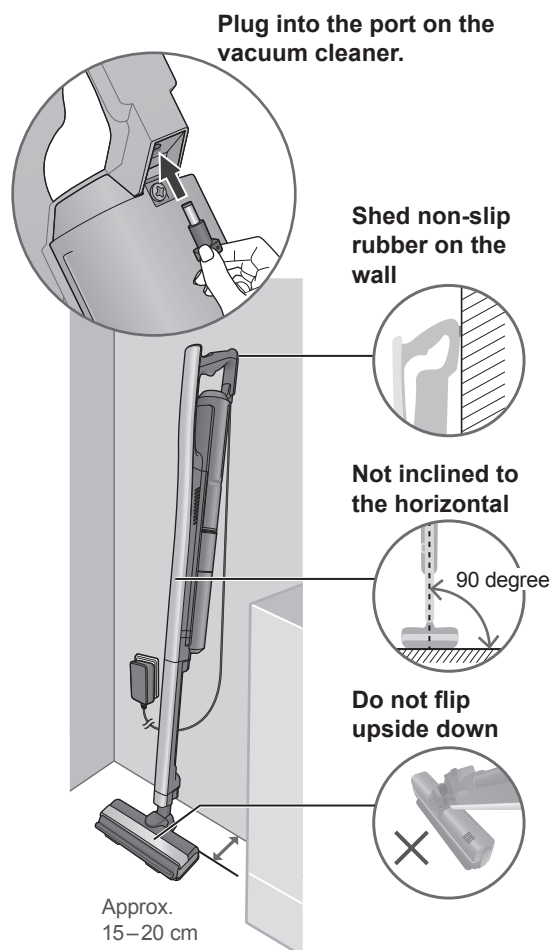
To help make the battery last longer

- If the unit is not used for one month or more, charge the unit fully, turn the main power switch off for storage, then recharge the unit at least once a year thereafter.
(Storing the unit in an uncharged state will adversely affect the performance and lifespan of the battery.)
- Recharge in a room where the temperature is between 5 °C and 35 °C. The unit cannot charge properly if the room is too cold or too hot (such as when the room receives direct sunlight). The run time will be shortened and recharging times will increase.

NOTE

- The main unit and charging adapter may become warm while charging, but this is normal.
- The length of time the unit can run varies depending on the temperature of the battery and other usage conditions.
- Run time will vary depending on the state of the battery and/or temperature.
- If vacuum cleaner has not been used for 6 months, the run time after full charge will be reduced. Run time will return to normal after 2–3 full use/charging cycles.

If you do not want to hang the vacuum cleaner to the wall.

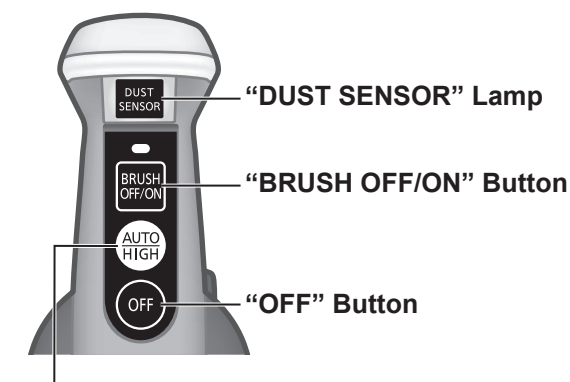


REQUEST

- When propping against the wall, please make sure there is nothing fragile around and keep away from children and pets.
- If the floor or the wall is slippery, please lay on the floor.

How To Use The Vacuum Cleaner

- 1 Remove vacuum cleaner from charging base.
- 2 Press the power button to turn on vacuum cleaner.
The power level is changed by pressing the power button.



Power button

"AUTO" → "HIGH"
↑

AUTO: The suction is adjusted automatically to suit the volume of dust detected at the cleaning face.

HIGH: High power

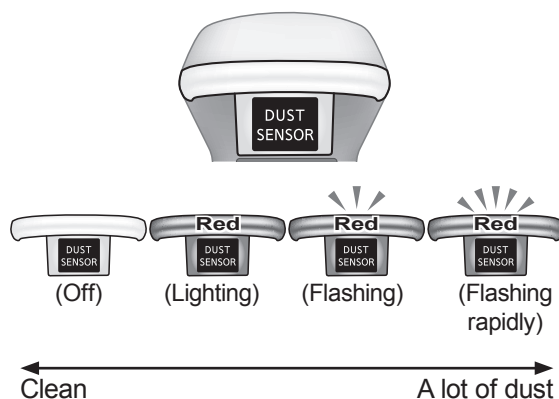
Press the "BRUSH OFF/ON" button to turn it ON or OFF to suit the flooring being cleaned.

- 3 After use, place vacuum cleaner into charging base.

Dust Sensor

Dust Sensor detects invisible dust and controls power automatically.

The dust sensor lamp flashes to let you know it has found dirt you can't see.
(It detects very fine house dust, even pollen)



Anti-idling Function

The agitator will stop functioning/working when the nozzle is lifted up for more than 5 sec. It will restart when the nozzle is lowered onto the floor.


- The dust sensor lamp is blinking slowly (about 3-second intervals) when the anti-idling function is working.
- If the anti-idling function has continued for about 10 minutes, vacuum cleaner will be turn it OFF.

Changing the setting of the anti-idling function

To cancel the anti-idling function

1 Lift the power nozzle at “AUTO” position.

- After about 5 seconds the operation is stopped, and the dust sensor lamp is blinking slowly.

2 Press  (more than 2 sec.)

(The dust sensor lamp is turned off, the setting is completed if the operation is resumed.)

To set the anti-idling function

1 Lift the power nozzle at “AUTO” position.

2 Press  (more than 2 sec.)

(The operation is stopped, the setting is completed if the dust sensor lamp is blinking slowly.)

Battery Status

Remaining battery level can be checked using the following steps.

1 Remove the vacuum cleaner from the charging base.

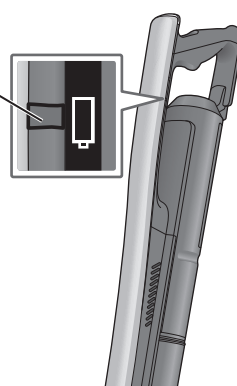
2 Turn on vacuum cleaner.

Battery Status Indicator

If battery status indicator is lighting then battery power level is OK.

If battery status indicator is blinking the battery needs to be charged before further use.

Battery Status Indicator



Lighting



Blinking

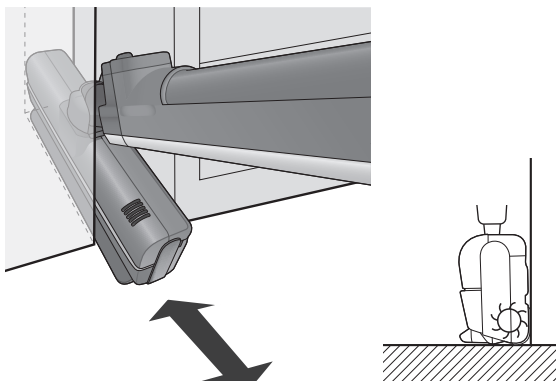


The battery is consumables.

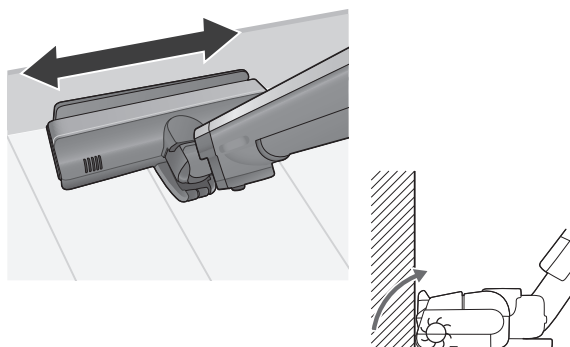
- The run time reduces as you continue to repeatedly use the unit. The life of the battery depends on factors such as the ambient temperature, and amount of time it is used, and the length of charge/discharge cycles will become shorter depending on usage conditions.
- If the run time reduces significantly even after proper recharging, it means the battery has reached the end of its service life. Please contact to the retailer where you purchased this vacuum cleaner.

Power nozzle allows you to reach to the edges and clean every corner.

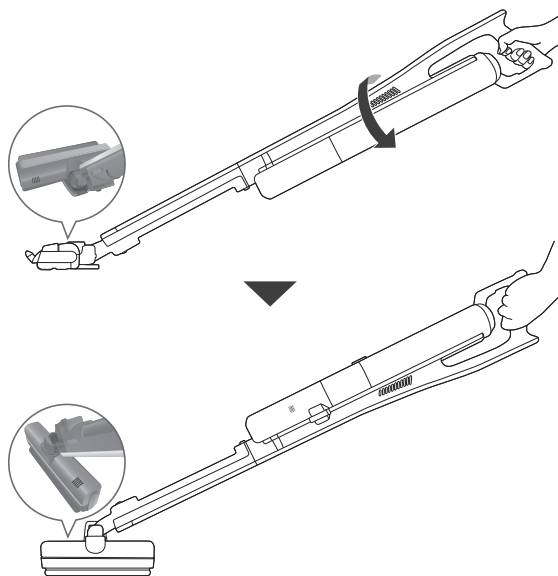
For the narrow space



At the wall side

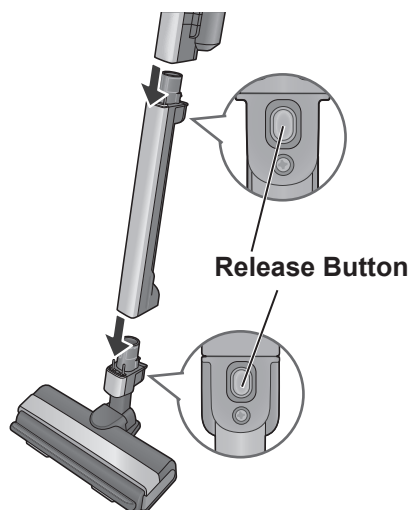


Turn to the upside down.



As a Handy Cleaner

- 1** Press the release button.
Remove the extension wand and power nozzle.



- 2** Tools can be attached to the vacuum cleaner as needed.

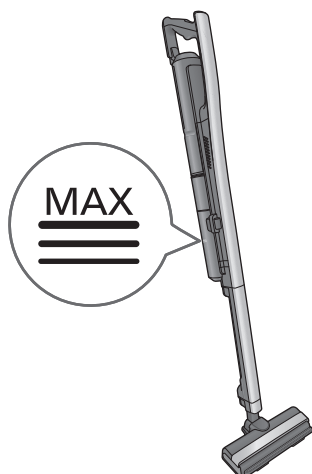


Maintenance

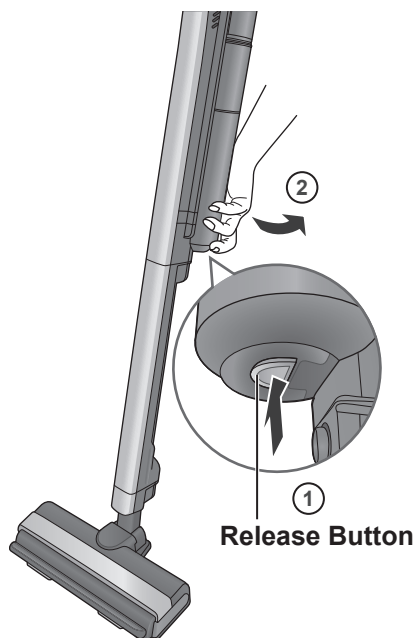
How to empty the dust cup

Empty the dust cup in the following cases:

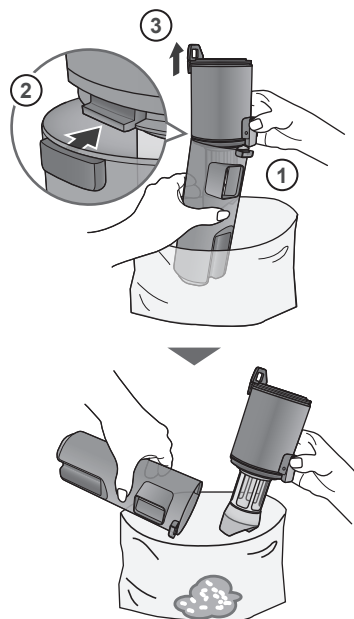
- When dust level reached the "MAX" line.
- When suction power has dropped.



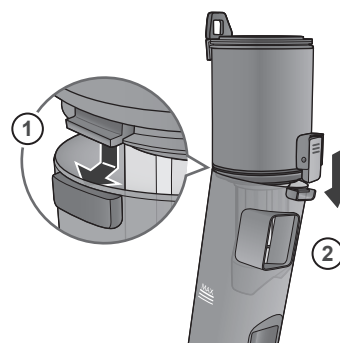
1 Press the release button and remove dust box from vacuum cleaner.



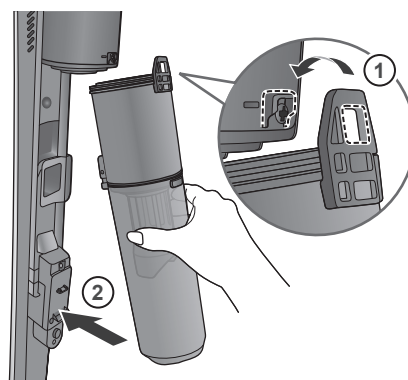
2 Remove the filter case, and throw away the trash.



3 Reinstall filter case into dust cup.



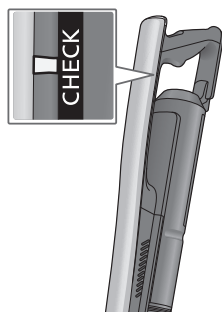
4 Reinstall dust box into vacuum cleaner.



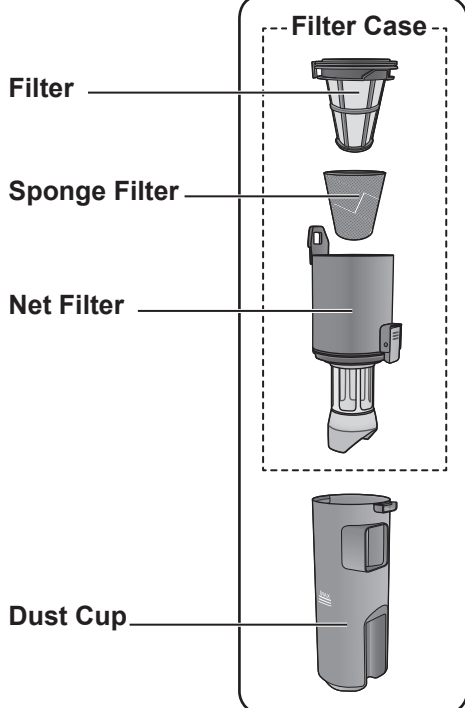
Cleaning the dust box

Cleaning the dust box in the following cases:

- When the "CHECK" lamp (red) light up.
- When the suction power is not restored even empty the dust cup.

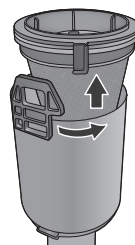


Dust Box

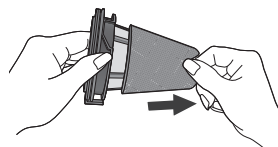


Disassembly

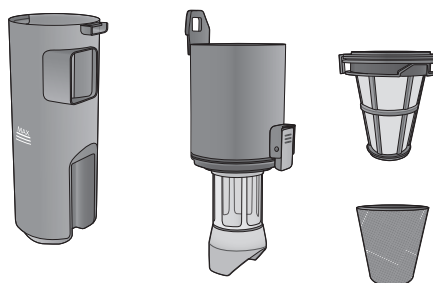
1 Remove the filter from the net filter.



2 Remove the sponge filter from the filter.



3 Separate parts as shown.



Cleaning

Remove the dust by tapping filters.
Wipe off the dirt of the surface with a tissue.

The dust cup, sponge filter, filter and net filter may be washed. If necessary, rinse with cold water only.

DO NOT use detergent or soap.

DO NOT wash in the dishwasher.

Allow parts to dry 24 hours before putting back into vacuum cleaner.

DO NOT install damp.



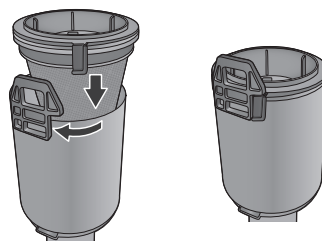
Assembly

Assemble the dust box in reverse order of disassembly.

1 Attach the sponge filter to the filter.



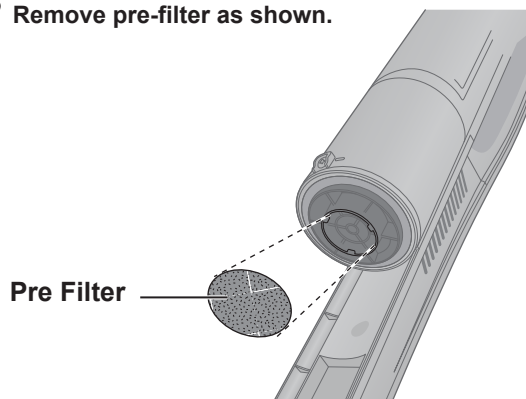
2 Attach the filter to the net filter.



Cleaning the Pre-filter

1 Remove dust box from vacuum cleaner.

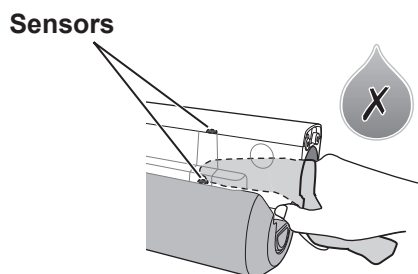
2 Remove pre-filter as shown.



Cleaning Sensors

DO NOT clean with water.

If necessary wipe with a tissue or soft dry cloth.

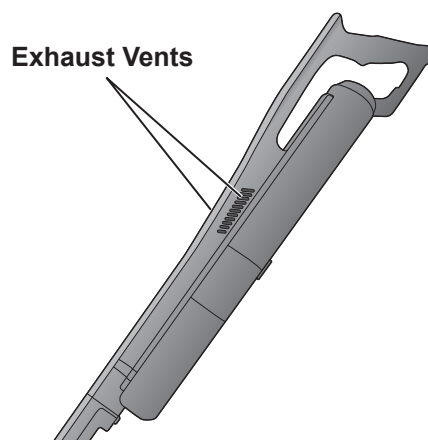


Cleaning Exterior

EXHAUST VENTS

DO NOT clean with water.

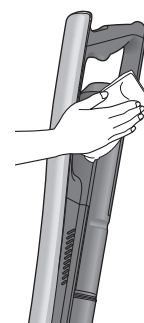
If necessary, wipe with a tissue or soft dry cloth.



BODY

Wipe gently with a damp cloth.

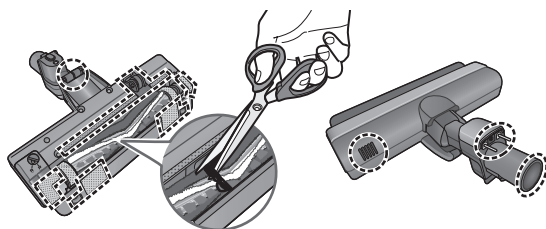
DO NOT use water.



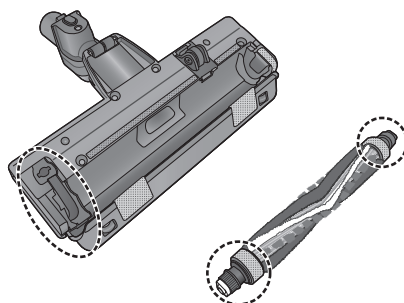
Cleaning the Power Nozzle

Check the areas marked in the illustrations and remove any debris.

Cut off any hair, thread, string, carpet pile, and lint entangled around agitator with a pair of scissors.



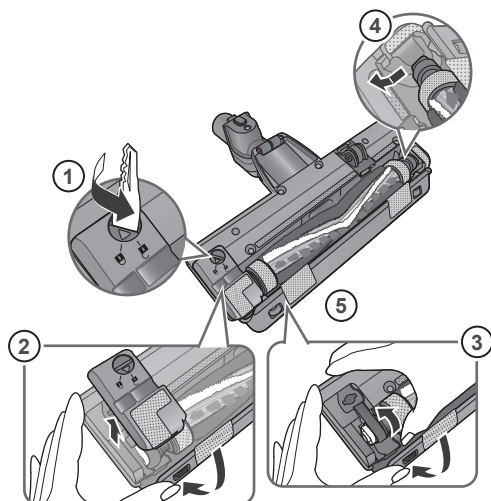
- 2** Remove any dirt or debris in the belt path and agitator areas.



Cleaning Agitator

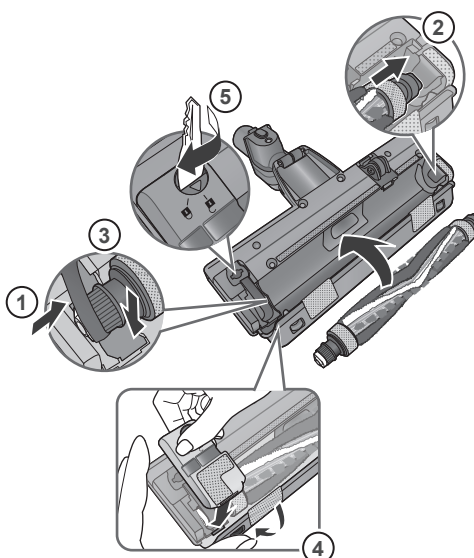
- 1** To remove the agitator cover and agitator:

- ① Turn the latch located on the agitator cover to the unlock position.
- ② Press the shutter down.
Remove agitator cover.
- ③ Press the shutter down.
Lift the agitator end cap out.
- ④ Remove agitator.
- ⑤ Remove belt.



To install agitator cover and agitator:

- ① Reinstall belt onto belt pulley.
- ② Reinstall agitator into nozzle as shown.
- ③ Press agitator end cap into place in nozzle.
- ④ Press the shutter down.
Fit the tip of the agitator cover by hooking the claw.
- ⑤ Place the agitator cover onto nozzle and secure by rotating the latch to the LOCK position.

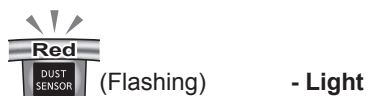
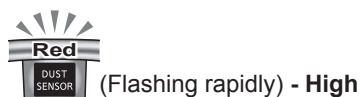
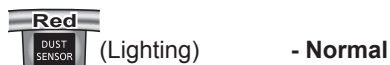


Changing The Settings

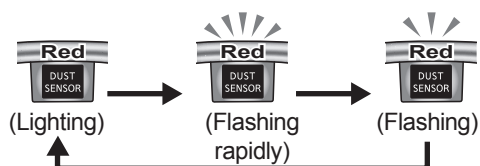
Changing the sensitivity of the dust sensor

- 1 Press "BRUSH OFF/ON" while holding down "OFF".
(Hold down "BRUSH OFF/ON") Release "OFF" and hold "BRUSH OFF/ON" for more than 5 seconds.

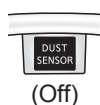
States of the dust sensor lamp



- 2 Press "BRUSH OFF/ON" to select the sensitivity.
(Changes each time you press "BRUSH OFF/ON")



- 3 Press "OFF". (Setting finished)



Product Disposal

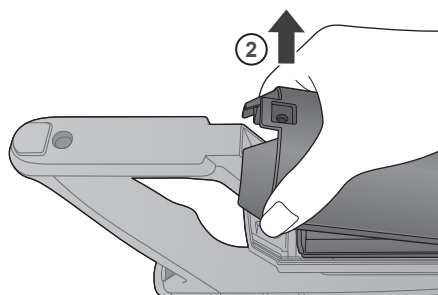
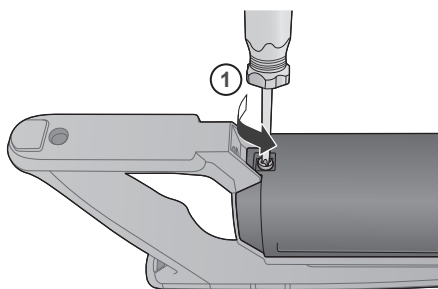
Rechargeable battery in this vacuum cleaner is lithium-ion battery.

- The used battery should not be disassembled and disposed it together with normal household waste. Please remove the battery from vacuum cleaner, then take it to appropriate collection points in accordance with your municipal rules. For more information, contact with the retailer or your local authorities in charge of waste management.

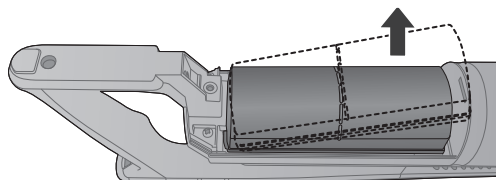
Before removing the battery, discharge it completely by operating the unit until it stops.

1 To remove the battery cover.

- ① Unscrew the screw.
- ② Remove the battery cover.



2 Remove the battery.



Trouble Shooting



WARNING

Electrical Shock or Personal Injury Hazard

Disconnect the electrical supply before servicing or cleaning the vacuum cleaner. Failure to do so could result in electrical shock or personal injury from vacuum cleaner which may operate suddenly.

Review this chart to find do-it-yourself solutions for minor performance problems. Any service needed, other than those described in Operating Instructions, should be performed by an authorized service representative.

PROBLEM	POSSIBLE CAUSE	POSSIBLE SOLUTION
Vacuum Cleaner not functioning.	<ul style="list-style-type: none">- Power button not turned on.- Battery is dead.- Thermal cut-out activated.	<ul style="list-style-type: none">- Push Power button to on.- Charge Battery.- Empty dust cup, clean filters, and leave cleaner for 30 minutes.
Suction power weakened.	<ul style="list-style-type: none">- Full or clogged dust cup.- Dirty filters.- Clogged nozzle or dust cup.- Thermal cut-out for nozzle motor activated.- Worn agitator.	<ul style="list-style-type: none">- Empty dust cup.- Change/clean filters.- Clean nozzle or dust cup.- Turn off for 30 minutes, and then turn on again.- Replace agitator.
Agitator not turning.	<ul style="list-style-type: none">- Thermal cut-out for nozzle motor activated.- Belt/agitator not installed properly.- Rolling switch activated.- Nozzle is floating from floor.	<ul style="list-style-type: none">- Turn off for 30 minutes, and then turn on again.- Check belt and/or agitator.- Float nozzle from floor and then place on the floor.- Place nozzle on the floor.

If the problem remains after checking, return the vacuum cleaner to the retailer where you purchased it. Do not attempt to repair it by yourself.

Specifications

Specifications	MC-BJ870
DC Operating Voltage	21.6 V
Dimensions (W×D×H)	252 mm × 153 mm × 1160 mm
Weight	2.2 kg
Dust Cup Capacity	0.2 L
Approximate Run Time	AUTO 15–30 min HIGH 10 min (full charge, fairly new battery, at 20 °C)
Approximate Charging Time	3 hours (when charging starting when the battery is completely discharged and the ambient temperature is 20 °C)
Battery	Rechargeable Lithium-ion battery (6 cells)
Rated capacity of battery	1850 mAh
AC Adapter Input Characteristics	AC 100–240 V 50–60 Hz 0.7–0.25 A
AC Adapter Output Characteristics	DC 24.5 V 1 A
Tools	Crevice tool Dusting brush

* Class with respect to protection against electric shock: ☐

“Charging Information for battery pack”

Nominal Specifications		
Item	Specifications	Remark
Charging Current (Max.)	1.05 A	-
Charging Voltage	25.02 V	-
Charging cut current	100 mA	-
Ambient (Charge)	0–45 °C	-

Charge Limits		
Battery Pack Model	Maximum Charge Currents, A	Maximum Charge Voltage, V
AMV97V-NT	1.05 A	25.15 V

Panasonic Corporation

1006, Oaza Kadoma, Kadoma-shi, Osaka 571-8501, Japan

<http://www.panasonic.com>

© Panasonic Corporation 2017