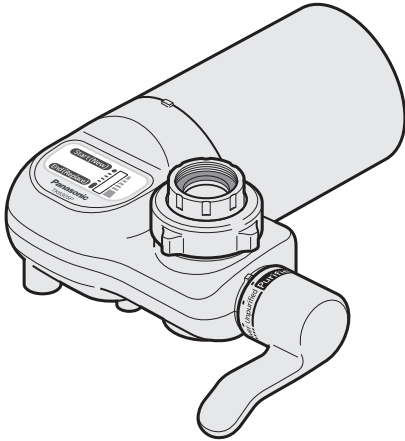


Instruction Manual

Water Purifier **Household Use**

Model No. **TK6305P**



For the connection to the water faucet, refer to “**Installation procedure**” on pages 8 to 13.

Contents

Safety precautions	2
Tips to ensure proper operation	4
Names of the parts	5
Steps to take before installing the product	6
Installation procedure	8
Operation	14
Concerning the cartridge	16
Maintenance	19
Checks and inspections	20
Troubleshooting	21
Customer information	22

Thank you very much for purchasing this water purifier.

- Please read through this instruction manual carefully before using the product to ensure proper operation.
- **Be sure to read the “Safety precautions” (pages 2 and 3) before using the product.**
- Check that the purchase date has been entered on the warranty, and keep the warranty in a safe place together with the instruction manual.
- Bear in mind that Panasonic will not be liable for any product malfunctioning or accidents which result from the failure to install or operate the product properly.

Safety precautions

These must be observed

Be sure to observe these precautions

Notes

- “Purified” means water which has been processed through the purifier.
- “Unpurified” means water straight from the water faucet.

- **Use only water (such as city water) which has been certified as fit for drinking (potable) with this product.**

This product does not have a sterilizing capability and cannot remove harmful substances so drinking unfit (non-potable) water may cause health problems.

- **Do not connect the product to a mains stop type of water heater (with a structure that makes it impossible to shut off the water at the hot water outlet such as an instantaneous water heater).**
- **Do not connect the product to a hot-water supply system which does not have a non-return valve (a valve for preventing the backflow of water).**

If the above precautions are not observed, the hot-water supply system may malfunction.

- **Do not use the product near an appliance whose temperature has reached a high level or near naked flames.**

If the above precaution is not observed, the product may be deformed by heat, possibly resulting in water leaks.

- **Do not store purified water for long periods of time. (Purified water may be stored in airtight containers at most for a day at room temperature and at most for two days in a refrigerator.)**

If the above precaution is not observed, the water quality may deteriorate which in turn may cause health problems since the chlorine (used for sterilization) and other elements have been removed from the water.

- **Do not use purified water to raise fish.**

If the above precaution is not observed, the water quality environment may deteriorate, possibly causing the fish to die.

- **Every day before using the product for the first time, allow about 0.7 liter of water to pass through it (this will take about 20 seconds).**
- **If the product has not been used for two or more days, allow about 6 liters of water to pass through it (this will take about 3 minutes).**
- **Replace the cartridge by the time its filter needs to be replaced. (About 1 year when the product has been used to make 10 liters of purified water a day)**

Failure to observe the above precautions may cause health problems.

- **Do not attempt to disassemble or repair this product.**

If the above precaution is not observed, water may leak and/or the main unit may malfunction.

- Ask the dealer from whom you purchased the product to repair it.

- **Do not pass water through a product with its cartridge removed.**

- **Do not block the purified water outlet.**

- **Do not connect a hose or other appliance to the purified water outlet.**

- **Do not pass hot water (with a temperature of 35 °C or above) through the product while using the selector lever at the “Purified” position.**

- **Do not pass hot water (with a temperature of 80 °C or above) through the product while using the selector lever at the “Unpurified” or “Shower” setting.**

- **Do not allow the water in the product to freeze. (Remove the main unit if there is likelihood that the water will freeze.)**

- **Do not keep the selector lever at any position other than one which is marked.**

If the above precautions are not observed, water may leak and/or the main unit may malfunction.

- **Reduce the water flow when the water pressure is high.**

If the above precaution is not observed, water may leak and/or the main unit may malfunction.

- **Keep the accessories out of the reach of babies and small children.**

If the above precaution is not observed, the accessories may be accidentally swallowed or other accidents may occur.

Tips to ensure proper operation

■ Do not pass the following kinds of water through the product.

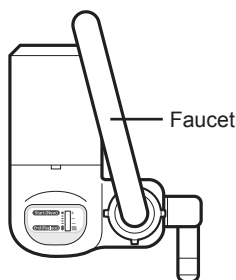
(Doing so will significantly shorten the cartridge life.)

- Very cloudy water
- Water with a high red rust content

■ Do not install the water purifier at an angle to the faucet as shown in the figure below.

(The main unit may come into contact with the faucet, making its installation impossible.)

View as seen from
directly above



■ Immediately after installing the product or replacing its cartridge, pass about 6 liters of water (this will take about 3 minutes) through the product with the selector lever at the “Purified” setting.

(This is done to expel the air inside the cartridge.)

- Air bubbles may collect in the cartridge life indicator (window area) or a whistling sound may be heard. This happens because the air inside the cartridge is being expelled: It is normal and not an indication that something is wrong with the product.

■ Do not remove the cartridge except to replace it.

(The display that indicates the cumulative total amount of water that has passed through the product will be cleared, and you will no longer know when the cartridge should be replaced.)

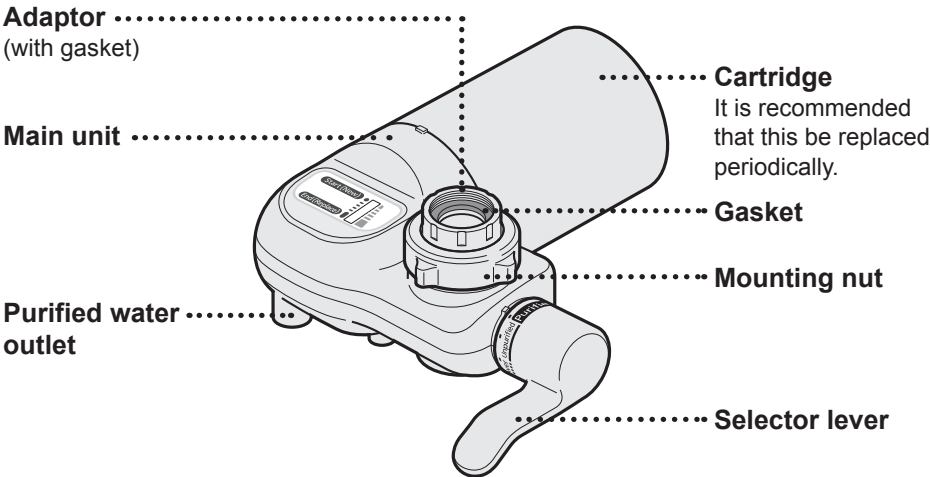
■ The temperatures of the water that can be used with this product are shown in the table below.

Do not allow the temperatures to exceed these levels.

(Use of water with a temperature exceeding the levels indicated in the table below may result in malfunctioning. At the “Purified” setting, it may also cause the substances absorbed in the cartridge’s activated carbon to be released.)

Selector lever position	Water temperature
Purified	Under 35 °C
Unpurified	Under 80 °C
Shower	

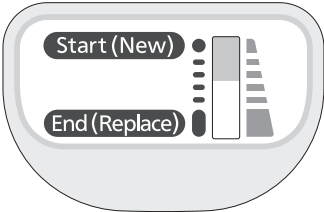
Names of the parts



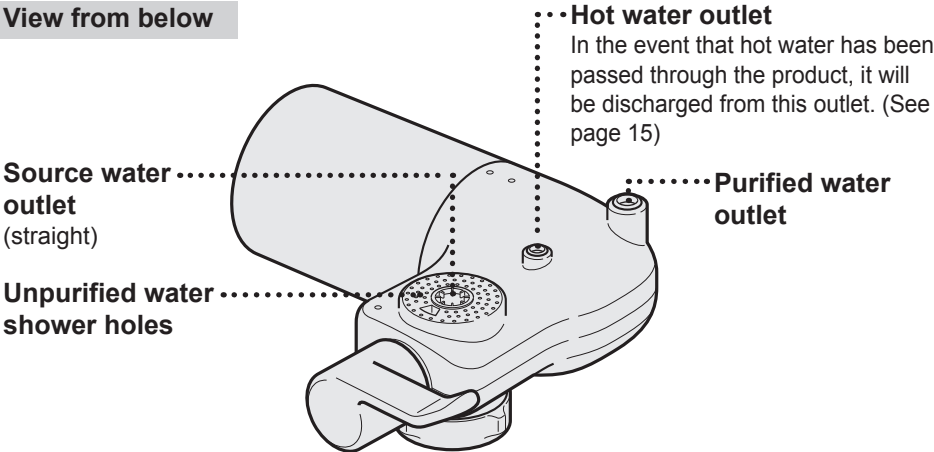
Cartridge life indicator (cumulative total flow indicator)

The quality and pressure of unpurified water differ from one area to another so when the product has been used to make 10 liters of purified water every day, the cartridge life indicator will show that replacement of the cartridge is due in about 1 year. (See page 16)

- The indicator displays the cumulative total flow volume of the purified water filtered by the product. It is not capable of detecting the clogging of the cartridge, reductions in the flow volume of the purified water, odors or taste.



View from below



Steps to take before installing the product

- Keep the parts you will not be using in a safe place just in case you relocate or the faucet needs to be replaced, for example.
- After installing the product, first carry out the checks and inspections, and then start using the product. (See page 20)

CAUTION

- **Keep the accessories out of the reach of babies and small children.**

If the above precaution is not observed, the accessories may be accidentally swallowed or other accidents may occur.

■ Supplied accessories (check that they are all present and accounted for)



Installation Adaptor
(with 4 screws)

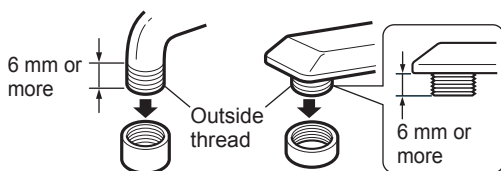


Bushing
(with gasket)

■ Faucets onto which the product can be installed

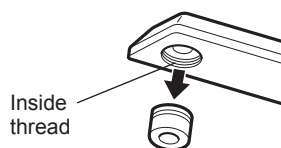
- **Faucets with a thread on the outside**
(See pages 8 and 9)

Thread diameter: 22 mm



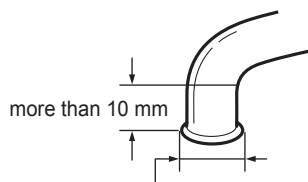
- **Faucets with a thread on the inside**
(See pages 10 and 11)

Thread diameter: 24 mm



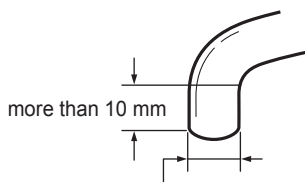
- **Faucets without an aerator** (See pages 12 and 13)

<Flared faucets>



Flared:
13 mm or more, less than 24 mm

<Straight faucets>



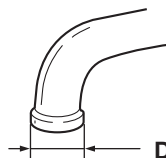
Diameter of faucet end:
13 mm or more, less than 24 mm

■ Faucets that require an optional accessory to install the product

With the following kinds of faucets, an optional accessory is required to install the product. Purchase the optional accessory from your dealer.

For details on installation, read carefully through the instructions that accompany the accessory.

● Large faucets



Diameter of faucet end: 24 mm to 32 mm



Optional accessory

Large-diameter Installation Adaptor
Model No.: P-06JRC

■ Faucets onto which the product cannot be installed

Bear in mind that it will not be possible to install the product onto custom designed faucets or faucets with the wrong thread diameter (which is not 22 mm) or wrong pipe diameter in addition to what is shown below. Neither is it possible to install the product if the main unit comes into contact with the faucet.

● Plastic faucets

Installation will cause the plastic area at the end of the faucet to crack.

Plastic



- The product can be installed onto faucets with a metal thread.

● Faucets with a shower nozzle

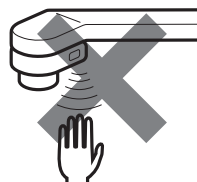


● Faucets whose end area measures 10 mm or less

10 mm or less



● Faucets with a sensor

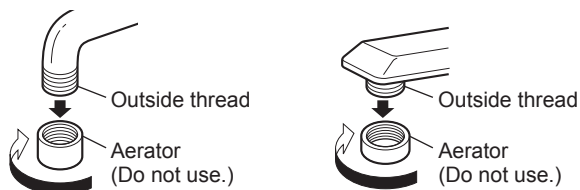


Installation procedure

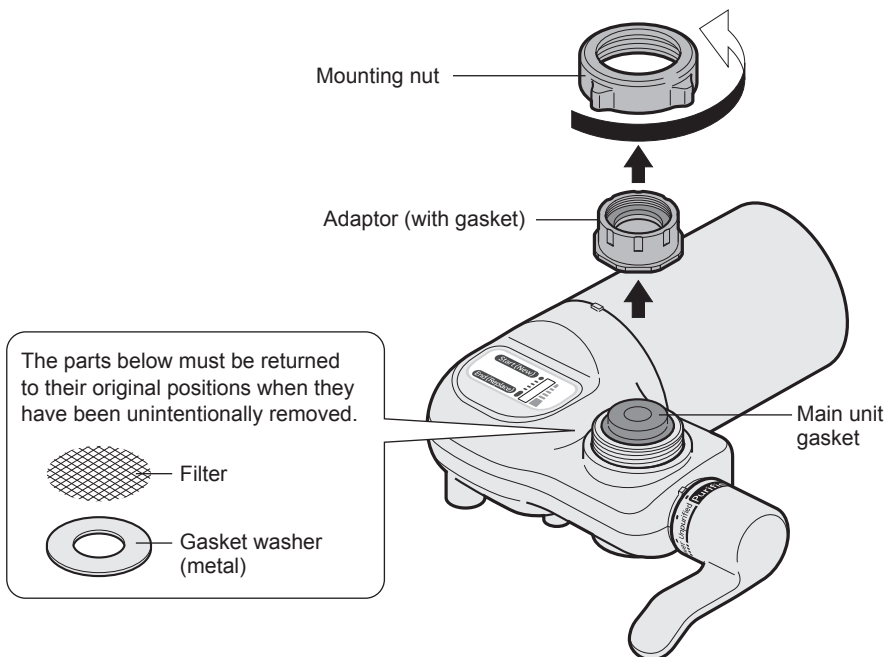
- Do not connect the product to a faucet used solely for hot water.

Faucets with an outside thread (thread diameter: 22 mm)

Types of faucets

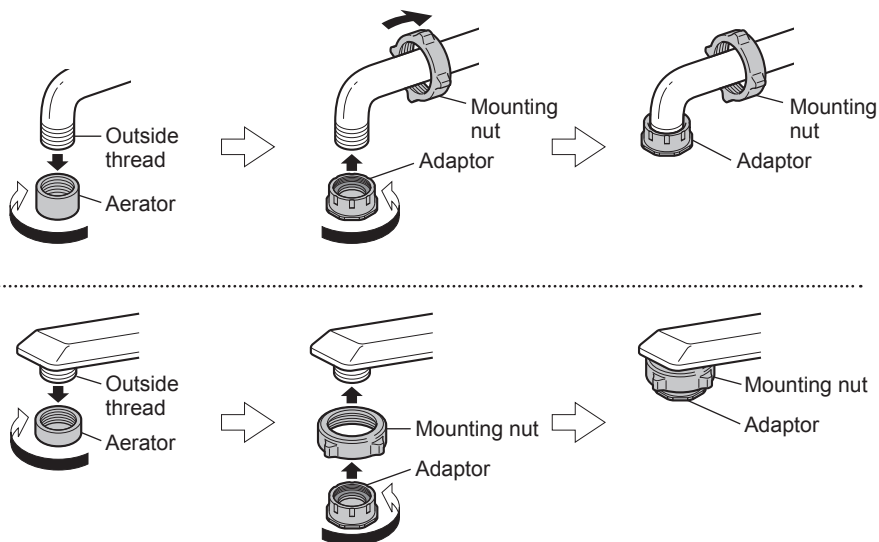


1 Remove the mounting nut and adaptor.



2 Remove the aerator, pass the mounting nut over the faucet, and install the adaptor.

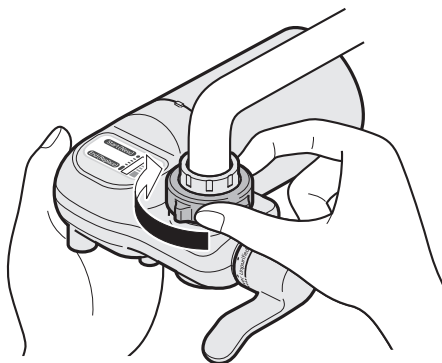
- The adaptor should be screwed on straight. Screwing it on tilted may strip the threads, resulting in water leaks.



3 Turn the mounting nut manually, and tighten it securely.

Important

- Do not use a tool to tighten up the mounting nut. (Doing so may damage the mounting nut.)
- Do not turn the main unit to tighten up the mounting nut. (Doing so will apply a powerful force to the thread, possibly damaging the main unit.)

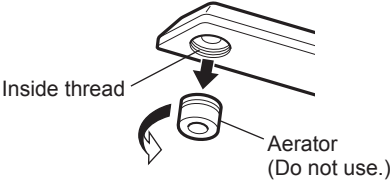



Upon completion of installation, check that the main unit does not easily rotate and that there is no play.

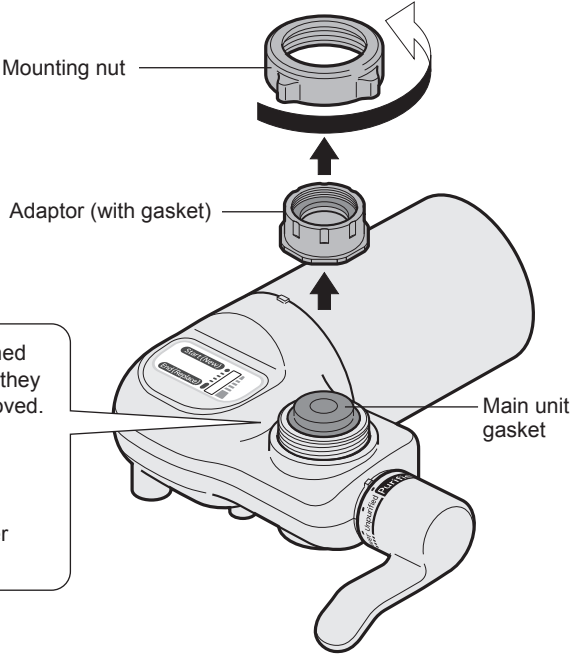
Installation procedure

- Do not connect the product to a faucet used solely for hot water.

Faucets with an inside thread (thread diameter: 24 mm)

Types of faucets	Accessories used
 <p>Inside thread</p> <p>Aerator (Do not use.)</p>	 <p>Bushing (with gasket)</p>

1 Remove the mounting nut and adaptor.

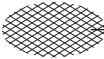


Mounting nut


Adaptor (with gasket)

Main unit gasket

The parts below must be returned to their original positions when they have been unintentionally removed.

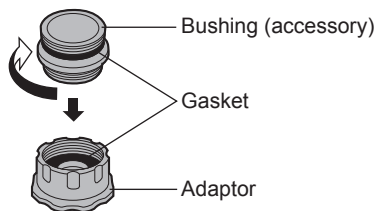


Filter



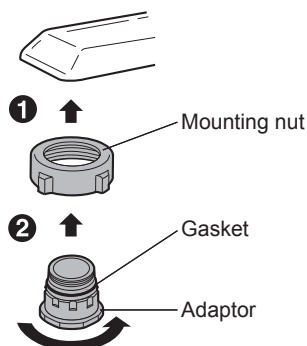
Gasket washer (metal)

2 Screw in the bushing. Insert into the adaptor.



3 Attach the mounting nut and adaptor.

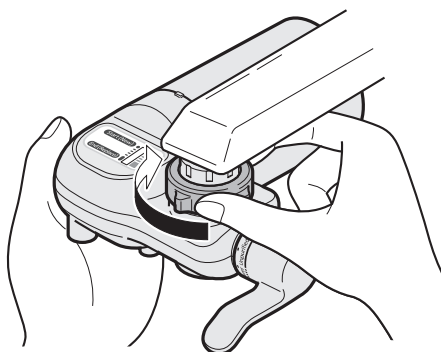
- The adaptor should be screwed on straight. Screwing it on tilted may strip the threads, resulting in water leaks.



4 Turn the mounting nut manually, and tighten it securely.

Important

- Do not use a tool to tighten up the mounting nut. (Doing so may damage the mounting nut.)
- Do not turn the main unit to tighten up the mounting nut. (Doing so will apply a powerful force to the thread, possibly damaging the main unit.)

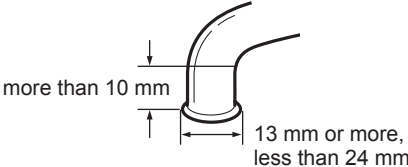

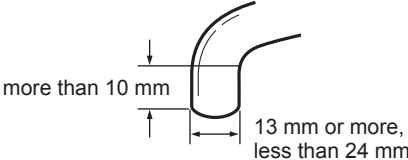


Upon completion of installation, check that the main unit does not easily rotate and that there is no play.

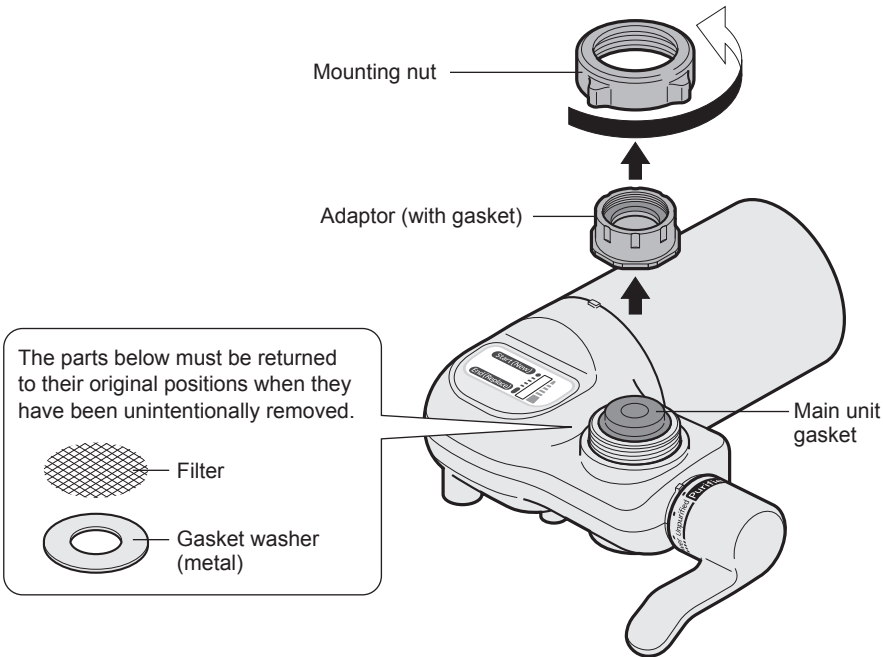
Installation procedure

- Do not connect the product to a faucet used solely for hot water.

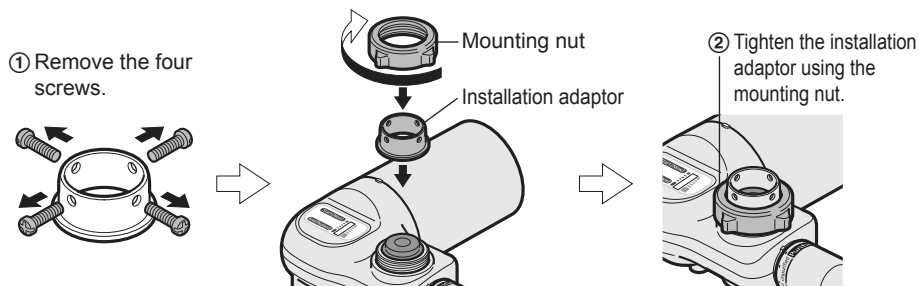
Faucets without an aerator

Types of faucets	Accessories used
<ul style="list-style-type: none">• Flared faucets 	 <p>Installation Adaptor (with 4 screws)</p>
<ul style="list-style-type: none">• Straight faucets 	

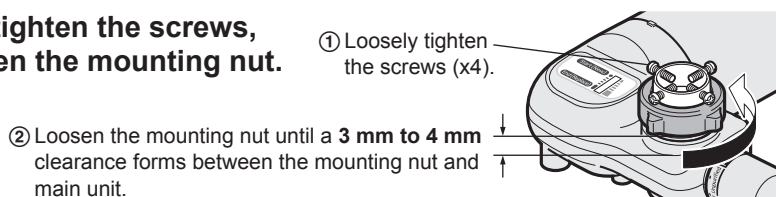
1 Remove the mounting nut and adaptor.



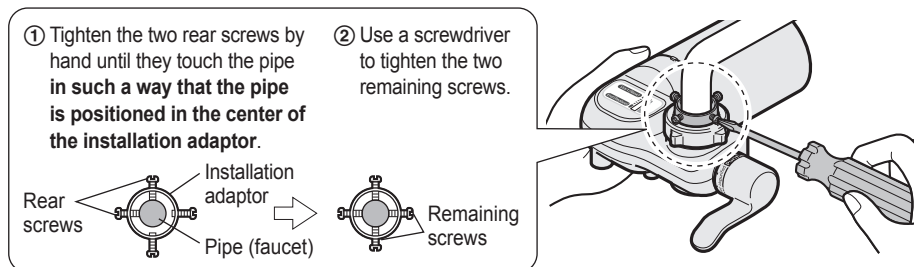
2 Remove the four screws of the installation adaptor, install the installation adaptor, and tighten it using the mounting nut.



3 Loosely tighten the screws, and loosen the mounting nut.



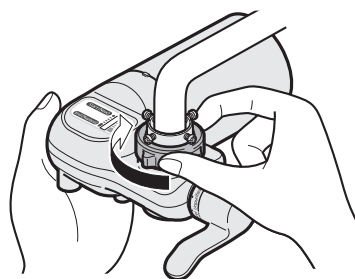
4 While pushing the main unit up, install it onto the faucet.



5 Turn the mounting nut manually, and tighten it securely.

Important

- Do not use a tool to tighten up the mounting nut. (Doing so may damage the mounting nut.)
- Do not turn the main unit to tighten up the mounting nut. (Doing so will apply a powerful force to the thread, possibly damaging the main unit.)



Upon completion of installation, check that the main unit does not easily rotate and that there is no play.

Operation

Using purified water

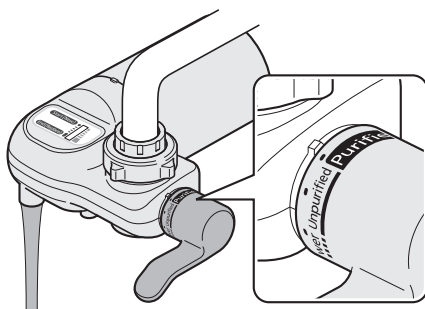
- Important**
- Do not pass water with a temperature 35 °C or above through the cartridge. (Doing so will release the substances which have been absorbed in the activated carbon.)

Purified

Purified water

- For cooking and drinking

- The water may contain bubbles: This happens because the air inside the main unit is mixed with the water: It is normal and not an indication that something is wrong with the product.
- While the cartridge is still new, the volume of purified water produced may be low depending on the temperature and pressure of the water and other factors. Pass about 6 liters of water through the product (this will take about 3 minutes). (This is done to expel the air inside the cartridge.)



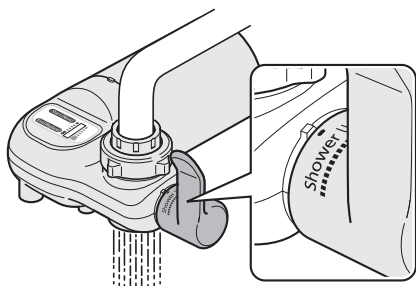
Using unpurified water (source water)

- Important**
- When passing hot water through the product, make sure that its temperature is normally under 80 °C. (This is to prevent deformation and malfunctioning.)

Shower

Unpurified water shower

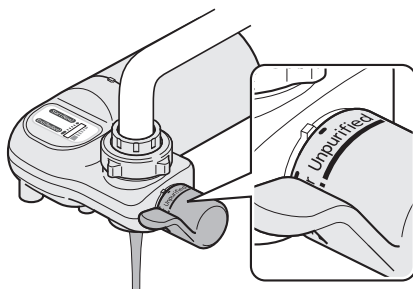
- Used to prevent water from splashing (when washing dishes or vegetables)



Unpurified

Source water straight

- Used to collect or pour water



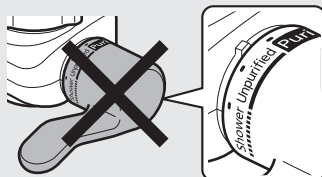
Observe the following precautions.

Do not keep the selector lever at any position other than one which is marked.

- Do not leave the selector lever at any position other than the “Purified”, “Shower” or “Unpurified” position. Doing so may cause water to leak from the main unit and faucet.

Operate the selector lever slowly.

- Otherwise, water may leak.



Do not knock hard objects against the main unit.

- Doing so may cause the installed parts to become loose or cause the main unit to malfunction.

If the city water contains a lot of red rust, turn on the source water every morning for a short while before using the product.

Immediately after water service work has been done, turn on the source water for a short while before using the product.

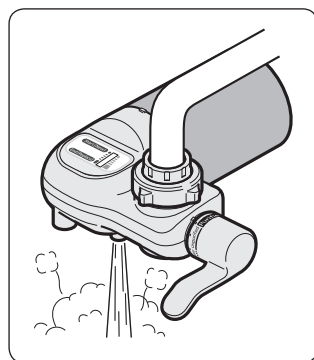
- This is recommended as a way of prolonging the life of the cartridge.

■ When hot water is allowed to pass through the product by mistake

- When hot water passes through to the purified water side, the hot water protection mechanism for protecting the cartridge is activated (activation temperature: 60 °C or above), causing the hot water to be discharged from the hot water outlet. (A beeping sound may be heard: This is normal and not an indication that something is wrong with the product.)

Important

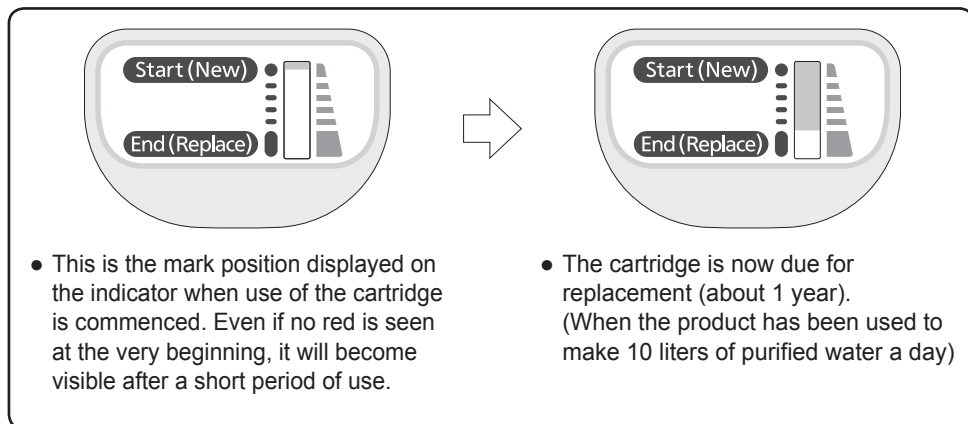
- Turn off the hot water immediately, and allow 0.4 liter of water to flow to the purified water side (this will take about 12 seconds) to cool down the unit. (For a few moments water will continue to be discharged from the hot water outlet: This is normal and not an indication that something is wrong with the product.)



Concerning the cartridge

When to replace the cartridge

- The “cartridge life indicator” displays the cumulative total water flow that has passed through the product, and it will indicate when replacement of the cartridge is due (guideline: red).



Important

- **Do not remove the cartridge except to replace it.** (The display that indicates the cumulative total amount of water that has passed through the product will be cleared, and you will no longer know when the cartridge should be replaced.)
- **When a used cartridge is replaced with a new cartridge, the red display returns to the “Start (New)” position.**
- Look at the indicator from a position immediately above it (so that you can observe it correctly).

Notes

- The cartridge life indicator displays the cumulative total volume of the purified water filtered by the product. It is not capable of detecting the clogging of the cartridge, reductions in the flow volume of the purified water, odors or taste.
- The water passes inside the cartridge life indicator. For this reason, air bubbles or droplets of water may be visible from the window of the indicator: This is normal and not an indication that something is wrong with the product.

Guidelines for replacement

- Replace the cartridge in the following situations even when the cartridge life indicator has not reached the “End (Replace)” position.

■ When either of the following events has occurred:

- When the volume of purified water has decreased
- When the odor of the water cannot be eliminated

■ When 1 year has passed since the cartridge started to be used

Cartridge performance

■ Filter (cartridge) replacement (change) timing

In approx. 1 year if the product has been used to make 10 liters of purified water a day

- **How long the filter is good for (usage period) differs significantly depending on the content of the organic substances contained in the water and the extent to which the water is cloudy.**
- The usage period may be shorter if well water is used.
- When the product is used to supply fresh water, water for tea, coffee and other drinks, water for cooking rice and so on for a family of 3 or 4, approximately 10 liters is normally used a day.
- When purified water is also used in washing rice, vegetables or dishes and in other kitchen jobs, the volume used will increase so the usage period will decrease.

Notes

● The volume of purified water may be less in the following cases:

- When the water temperature is low (because it is then harder for the water to pass through the cartridge)
- When the product is used in an area where the water pressure is low (under 70 kPa)
- The pressure of city water constantly changes depending on how much water is being used in the area so the volume of purified water may decrease at certain times of the day.
- After a suspension of the water supply, for example, immediately after water service work has been done, the volume of purified water may decrease.

● The cartridge is made of plastic.

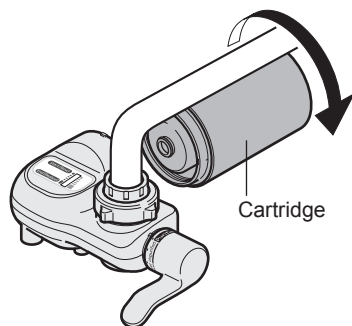
Dispose of a used cartridge in accordance with the applicable local laws and regulations.

Concerning the cartridge

Replacement procedure

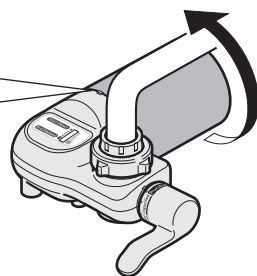
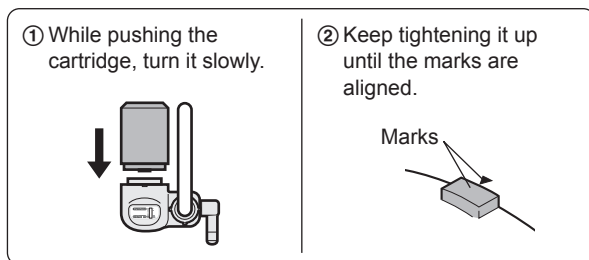
- Turn off the faucet before proceeding.

1 Remove the cartridge.



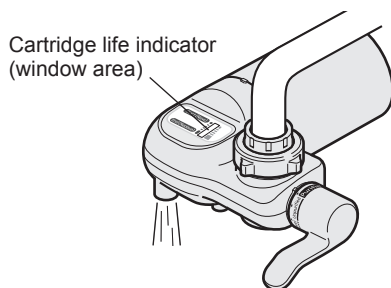
2 Install the new cartridge.

- The cartridge life indicator is automatically set to the “Start (New)” position.
The indicator may not be set to the “Start (New)” position if the cartridge is inclined at an angle or if it was turned and installed too quickly. If this is the case, install the cartridge again.



3 Allow about 6 liters of water to flow through the product at the purified water setting (this will take about 3 minutes).

(This is done to expel the air inside the cartridge.)



Important

- Replace the cartridge in a sink since some of the water may be spilled in the process.
- Do not overtighten the cartridge.
(Doing so may damage the thread which in turn may cause water to leak.)
- Air bubbles may collect in the cartridge life indicator (window area) or a whistling sound may be heard. (This happens because the air inside the cartridge is being expelled: It is normal and not an indication that something is wrong with the product.)

Maintenance

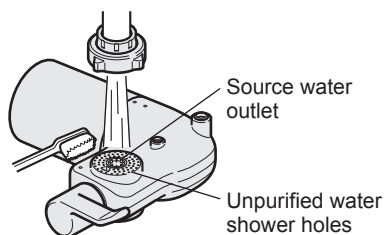
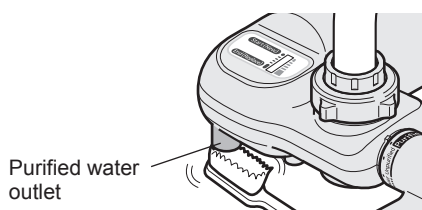
Main unit

- Clean the product using a cloth moistened with water.
- Do not use cleansers, paint thinners, alcohol or detergents, etc. to clean the product. Doing so may cause cracking and/or discoloration.

Purified water outlet / Source water outlet / Unpurified water shower holes

- Clean these outlet and holes using a clean brush.

The purified water outlet, source water outlet and unpurified water shower holes may become dirty because of water splashing off the sides of the sink.



Filter

- The water volume may be diminished when the filter at the outlet where the water purifier is installed becomes clogged.

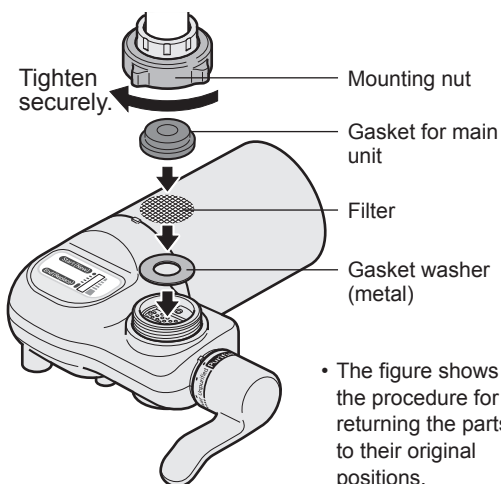
1 Loosen the mounting nut, and remove the main unit.

2 Remove the filter, and wash it using a clean brush.

- Foreign matter collects on top of the filter.

3 Return the parts to their original positions.

- Do not forget to put the gasket for the main unit in its place.

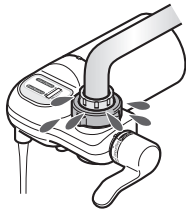
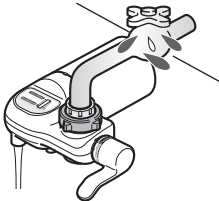


When passing water through the product after cleaning it, allow the water to flow with the selector lever set to “Unpurified” or “Shower”.

Checks and inspections

After installation or during use, carry out checks and inspections to verify that no water is leaking.

- Set the selector lever to “Purified”, turn on the faucet, and check for water leaking from the connections and other parts.

Water leakage symptom	Suspected cause	Remedial action (reference page)
<p>Water is leaking from the installation area:</p> 	<p>▶ Has the product been installed securely onto the faucet?</p> <p>▶ Is the end of the faucet (where the faucet is connected to the main unit) chipped or cracked?</p> <p>▶ Have the parts inside the main unit been assembled properly?</p> <p>▶ Is a gasket for the main unit being used an old one?</p>	<p>▶ Install the product securely. (See pages 8 to 13)</p> <p>▶ The faucet must be replaced.</p> <p>▶ Assemble the gasket for the main unit, filter and gasket washer properly. (See page 19)</p> <p>▶ The gasket must be replaced.</p>
<p>Water is leaking from the faucet:</p> 	<p>▶ Is the faucet gasket being used an old one?</p>	<p>▶ Consult a plumber.</p>

Troubleshooting

If any of the following symptoms are in evidence, proceed as follows:

Symptom		Suspected cause		Remedial action (reference page)
The odors are not eliminated.	▶	<ul style="list-style-type: none"> Has the replacement timing of the cartridge already passed? The usage period differs depending on the content of the organic substances contained in the water and the extent to which the water is cloudy. 	▶	Replace the cartridge. (See page 18)
The purified water flow is low.	▶		▶	
The purified water looks white and cloudy or it glitters.	▶		▶	
The source water does not flow properly.	▶	Is the filter clogged with foreign matter?	▶	Clean the filter. (See page 19)
The shower does not come out uniformly.	▶		▶	
Suspended particles are mixed in with the purified water.	▶	Is the purified water outlet dirty?	▶	Clean the purified water outlet. (See page 19)
Water is leaking from the unpurified water shower holes when the product is used with the selector lever at the purified water setting.	▶	Has the selector lever been set to a position which is not a marked position?	▶	Refer to page 15, and set the lever to the specified position. If this does not stop the water leak, detach the main unit, and ask your dealer to repair the product.
Water is leaking from the unpurified water shower holes when the product is used with the selector lever at the source water straight setting.	▶		▶	
Hot water is discharged from the hot water outlet (and sounds may also be heard as well).	▶	Is hot water passing through the product?	▶	Stop the supply of hot water immediately, and allow about 0.4 liter of water to flow through the product (this will take about 12 seconds). (See page 15)
Air bubbles or droplets of water can be seen in the window area of the cartridge life indicator.	▶	Water flows inside the cartridge life indicator. This is why air bubbles or droplets of water may be visible from the window. → This is normal and not an indication that something is wrong with the product. (See page 16)		

Customer information

Optional accessories

- Purchase these accessories from your dealer.

Cartridge
Model no. : TK6305C1



Specifications

Product name	Water Purifier (TK6305P)	
Type of material used	ABS resin	
Filter components	Mesh filter, Non woven fabric filter, Granular activated carbon, Ceramic, Spill-preventing mesh, Hollow fiber membrane	
Filtering capacity	2.0 L/min (at 100 kPa)	
Minimum usable dynamic water pressure	70 kPa	
Filter performance	Free residual chlorine Turbidity Total trihalomethane Soluble lead 2-MIB	4,000 L *1
	Bacteria	
	Unremovable matters	Dissolver iron, heavy metals (Silver, Copper, etc.) and salt (Seawater)
Guide for time to replace cartridge	In approx. 1 year if the product has been used to make 10 L of purified water a day	
Main unit dimensions	70(H) x 152(W) x 161(D) mm	
Main unit weight	Approx. 390 g (approx. 610 g when full of water)	
Pressure of water used by Water Purifier (dynamic pressure)	70 kPa to 350 kPa	
Usable water service pressure (static pressure)	70 kPa to 750 kPa	

- All figures given are for a water temperature of 20 °C.
- This product cannot convert hard water into soft water.
- The guideline for the filter (cartridge) replacement (change) timing differs significantly depending on the substances removed and the volume of water used and the water quality and its pressure.

*1 This test method is based on Japanese Industrial Standard (JIS) S 3201 : 2004.
(Turbidity) 50 % of filtration flow rate (Except Turbidity) Reduction efficiency : Over 80 % at filtration capacity

*2 This test method is based on Japanese Industrial Standard (JIS) S 3201 : 2010 (Annex K).

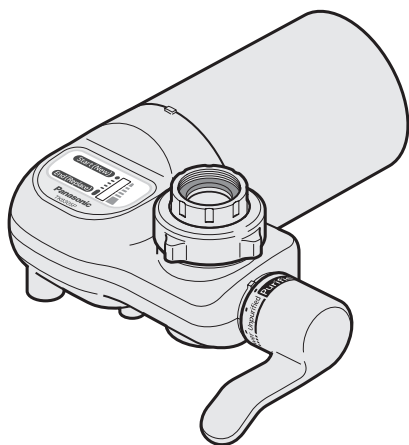
Notes

- **Total trihalomethanes** : This term refers to four compounds (chloroform, bromodichloromethane, dibromochloromethane and bromoform).
- **Soluble lead** : This refers to lead dissolved in water.
- **2-MIB** : This is an abbreviation for 2-methylisoborneol and is one substance causing the mold smell of tap water.

使用說明書

濾水器 家庭用

型號 **TK6305P**



連接水龍頭時請參閱 30 ~ 35 頁的「安裝方法」。

目錄

安全注意事項.....	24
為了正確使用.....	26
各部位名稱	27
安裝前	28
安裝方法.....	30
使用方法.....	36
有關濾心.....	38
維修保養.....	41
檢查與確認	42
故障排除.....	43
相關資訊.....	封底

感謝您選購 Panasonic 濾水器。

- 使用前請詳閱本說明書，詳閱說明書後再正確安全使用。
- 特別是「安全注意事項」（24 ~ 25 頁），請務必在使用前詳細閱讀。
- 保證書上的「購買日期」請務必填寫，並與本說明書妥善保管。
- 因安裝錯誤或不正確使用，而造成產品產生故障或發生事故時，本公司恕不負責。

安全注意事項

請務必遵守

請遵守下列內容

告知

- “過濾水” 指的是經濾水器處理後的水。
- “原水” 指的是直接來自水道的自來水。

- 請勿使用能夠飲用的水（自來水等）以外的水源。
由於沒有殺菌處理及無法去除有害物質，飲用之後易損害健康。
- 請勿連接於熱水器等無法關閉熱水構造的地方。
- 請勿連接於無附設防止逆流閥的熱水供應設備。
未遵守上述注意事項，將導致熱水供應設備故障。
- 請勿在高溫器具或火源附近使用。
未遵守上述注意事項，將因熱導致變形、漏水。
- 過濾水請勿長期保存。
（裝在乾淨的密閉容器中，常溫下可保存一天，冰箱內可保存 2 天）
未遵守上述注意事項，因已去除氯（殺菌劑）等，水容易變質，易造成損害健康的因素。
- 請勿使用過濾水養魚類。
避免造成水質環境改變，導致養殖魚類死亡。
- 每日初次使用時：約 0.7 公升（約 20 秒鐘）通水後使用。
- 2 天以上停止使用時：約 6 公升（約 3 分鐘）通水後使用。
- 請在標準時期內更換濾材。
（一天使用 10 公升的情況下約 1 年）
未遵守上述注意事項，將容易損害健康。

- 請勿自行分解、修理。

未遵守上述注意事項，將導致漏水或本體故障。

- 維修請洽經銷商。

- 未裝設濾心時請勿通水。

- 請勿阻塞過濾水口。

- 過濾水口請勿連接水管或其他器具。

- 使用過濾水時請勿以溫水（35℃以上）通水。

- 使用原水、淋灑式時，請勿以熱水（80℃以上）通水。

- 請勿使濾水器結凍。（快要結凍時，請卸下本體。）

- 請勿將切換手把停留在表示位置以外之處。

未遵守上述注意事項，將導致漏水或本體故障。

- 水壓高時，請關弱水量。

未遵守上述注意事項，將導致漏水或本體故障。

- 配件請放置於兒童拿不到的地方。

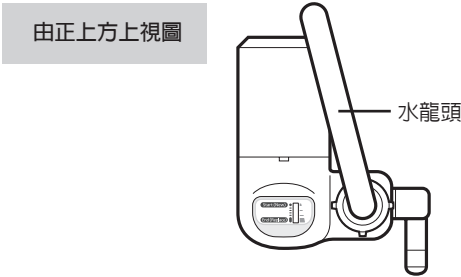
未遵守上述注意事項，將可能導致吞入口中等事故發生。

為了正確使用

■請勿以下列情況的水通水。
（將導致濾心壽命大幅減短。）

- 嚴重混濁的水
- 紅鏽含量多的水

■如下圖般，請勿將濾水器傾斜安裝於水龍頭。
（可能使本體接觸水龍頭，而無法安裝。）



■安裝本濾水器時或更換濾心後，請切換至「Purified」通水約 6 公升（約 3 分鐘）後使用。

（為了排除濾心內的空氣。）

- 濾心壽命顯示表（視窗部）可能有氣泡累積，或可能產生「咻、咻」聲。這是因為正在排除濾心內的空氣，並非異常。

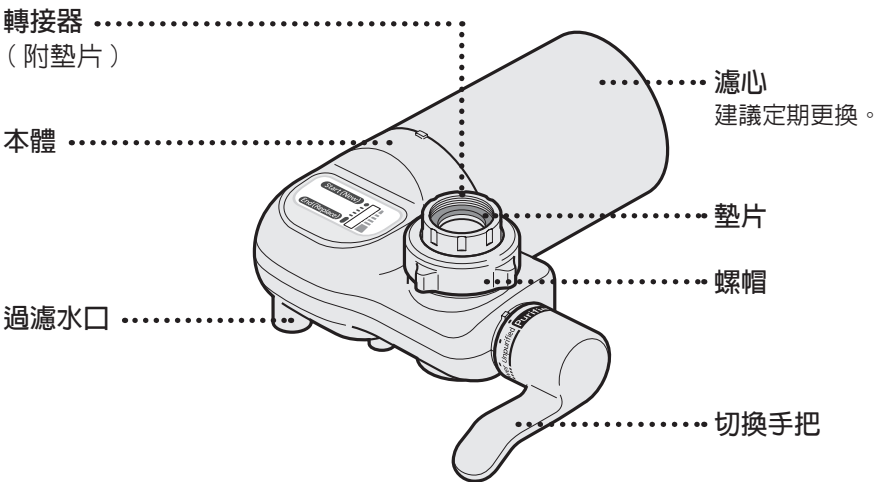
■除了更換濾心時以外，請勿卸下濾心。
（顯示的總通水量將消失，而無法知道濾心的更換時間。）

■可使用的水溫如下表所示。
請在此溫度範圍使用。

（使用下表以上的水溫將造成故障。或設定為「Purified」時將可能使吸附於活性碳上的成分釋出。）

切換手把的位置	水溫
Purified	不超過 35℃
Unpurified	不超過 80℃
Shower	

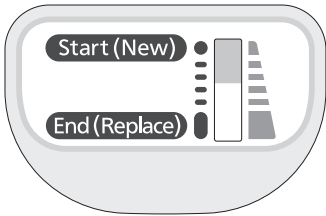
各部位名稱



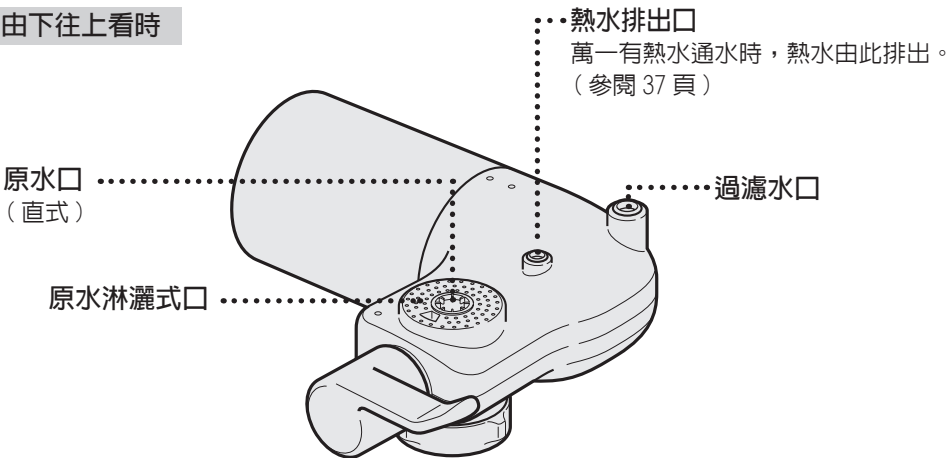
濾心壽命顯示表（累積流量計）

水質、水壓因地區而異，一天使用 10 公升時，濾心壽命顯示表約 1 年告知更換時間。（參閱 38 頁）

- 顯示過濾後的總通水量。無法測知濾心的阻塞、過濾水流量減少、氣味與味道。



由下往上看時



安裝前

- 沒有使用到的零件，請妥善保管，以備搬家或購買新水龍頭時之需求。
- 安裝完後請檢查與確認後再使用。（參閱 42 頁）

注意

- 配件請放置於兒童拿不到的地方。
未遵守上述注意事項，將可能導致吞入口中等事故發生。

■配件（請確認。）



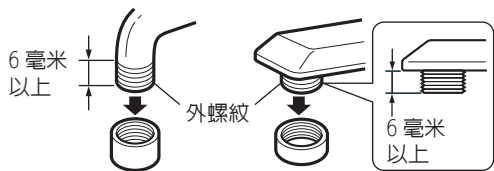
安裝轉接器
（附有四個螺絲）



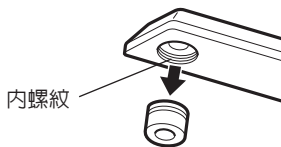
密封套
（附有墊片）

■可安裝的水龍頭

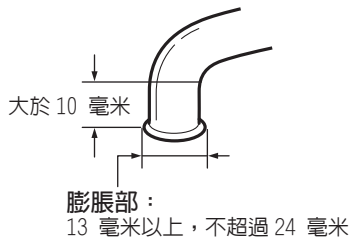
- 外螺紋水龍頭（參閱 30 ～ 31 頁）
螺紋直徑：22 毫米



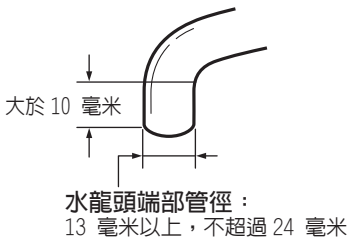
- 內螺紋水龍頭（參閱 32 ～ 33 頁）
螺紋直徑：24 毫米



- 無充氣器的水龍頭（參閱 34 ～ 35 頁）
< 端部呈喇叭型的水龍頭 >



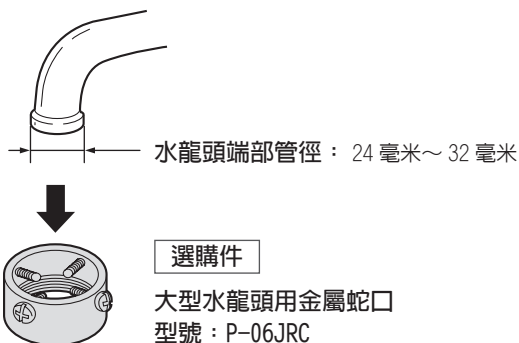
- < 直型的水龍頭 >



■需要選購件才能安裝的水龍頭

安裝於下列水龍頭時需要選購件。選購件請向經銷商購買。安裝方法請詳閱附屬的說明書。

● 大型水龍頭

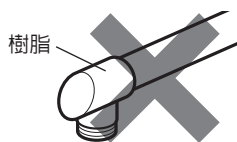


■無法安裝的水龍頭

下列之外也有變形水龍頭，或螺紋直徑（22 毫米以外）、管徑不同的水龍頭，可能無法安裝，請注意。此外，水龍頭會和本體接觸時也不能安裝。

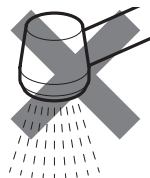
● 樹脂製水龍頭

將導致水龍頭端部的樹脂破裂



- 螺紋部分為金屬則可安裝

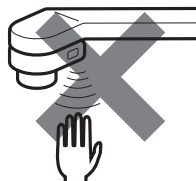
● 附有淋灑部



● 端部 10 毫米以下



● 附有感測器

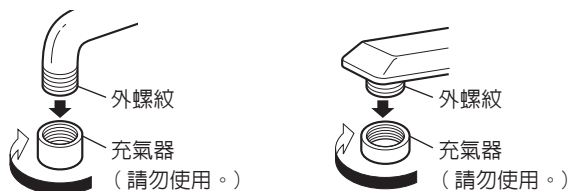


安裝方法

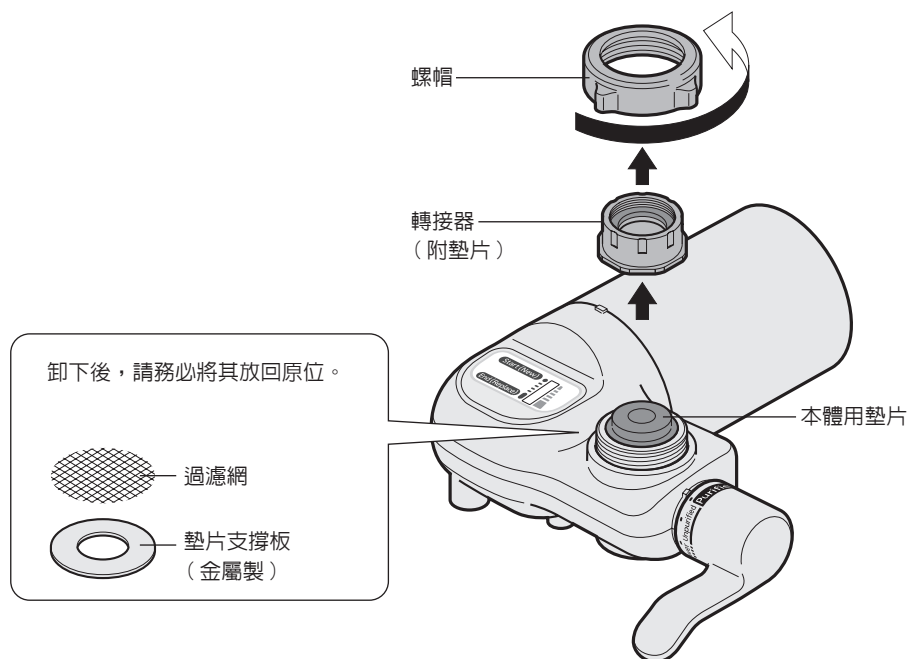
- 請勿連接於熱水專用的水龍頭。

外螺紋水龍頭（螺紋直徑：22 毫米）

水龍頭的種類

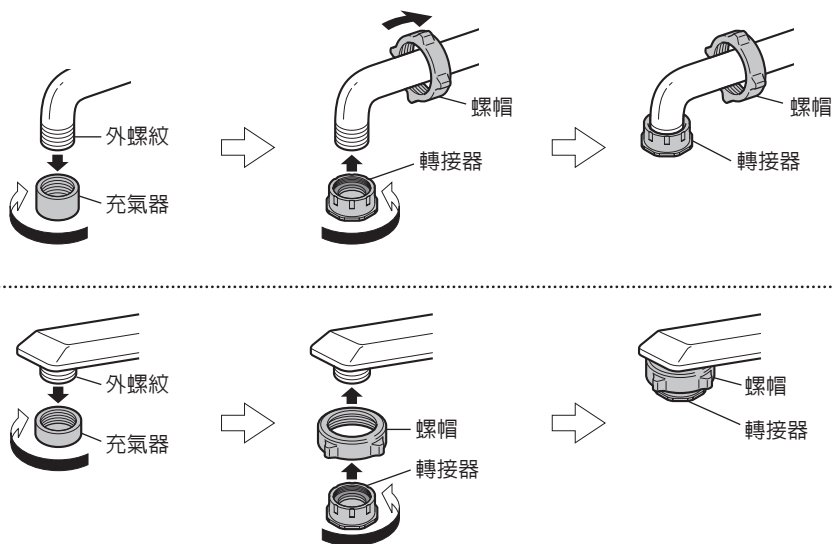


1 卸下螺帽和轉接器



2 卸下充氣器，安上螺帽和轉接器

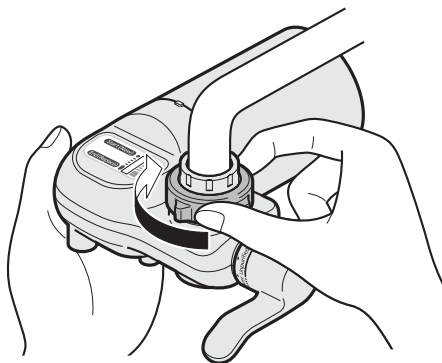
- 要將轉接器垂直擰緊。斜著擰入的話，會損壞其螺紋，造成漏水。



3 用手旋轉螺帽並確實鎖緊

注意事項

- 緊固螺帽時請勿使用工具。
(將導致螺帽損壞。)
- 請勿旋轉本體緊固。
(螺絲部受力太大，將導致本體損壞。)



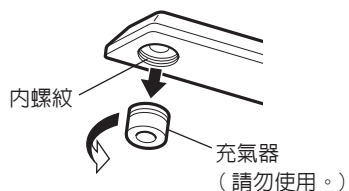
安裝後請確認本體不能輕易轉動、不搖晃。

安裝方法

- 請勿連接於熱水專用的水龍頭。

內螺紋水龍頭（螺紋直徑：24 毫米）

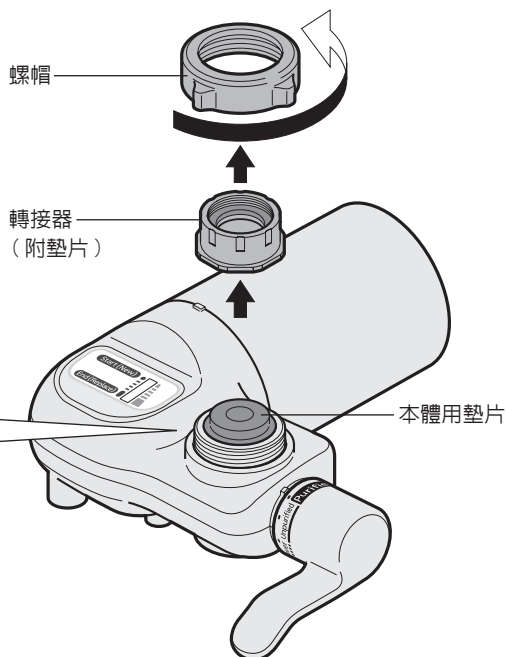
水龍頭的種類



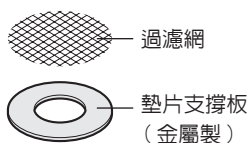
使用配件



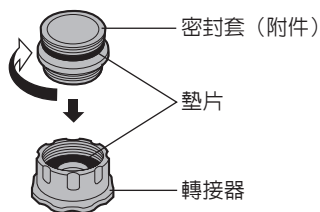
1 卸下螺帽和轉接器



卸下後，請務必將其放回原位。

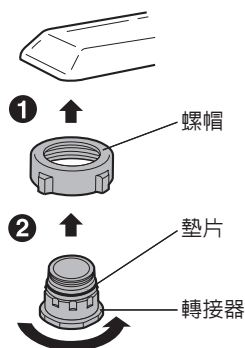


2 擰入密封套。插入轉接器



3 安上螺帽和轉接器

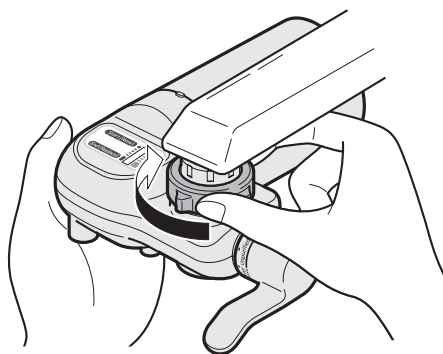
- 要將轉接器垂直擰緊。斜著擰入的話，會損壞其螺紋，造成漏水。



4 用手旋轉螺帽並確實鎖緊

注意事項

- 緊固螺帽時請勿使用工具。
（將導致螺帽損壞。）
- 請勿旋轉本體緊固。
（螺絲部受力太大，將導致本體損壞。）



安裝後請確認本體不能輕易轉動、不搖晃。

安裝方法

- 請勿連接於熱水專用的水龍頭。

無充氣器的水龍頭

水龍頭的種類

- 端部呈喇叭型的水龍頭



- 直型的水龍頭



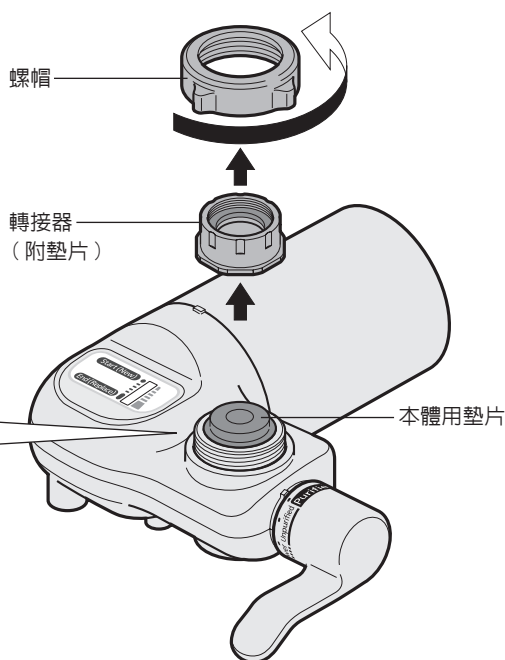
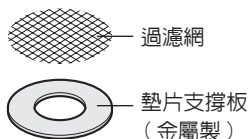
使用配件



安裝轉接器
(附有四個螺絲)

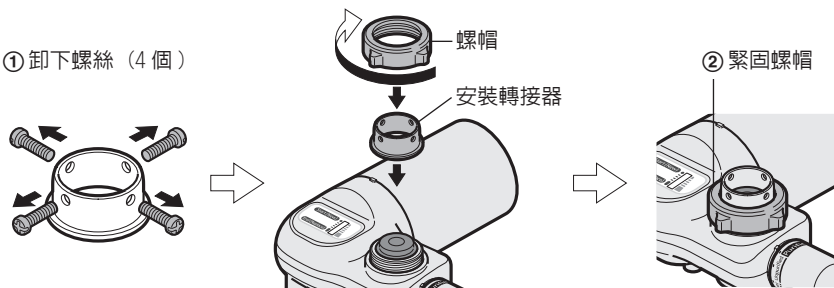
1 卸下螺帽和轉接器

卸下後，請務必將其放回原位。



2 卸下安裝轉接器的 4 個螺絲，插入安裝轉接器並用螺帽將其緊固

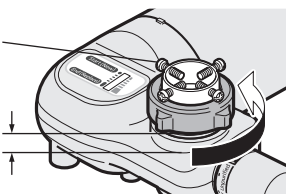
① 卸下螺絲（4 個）



3 先暫時緊固螺絲，再鬆動螺帽

① 暫時緊固 4 個螺絲

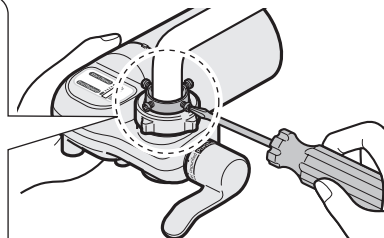
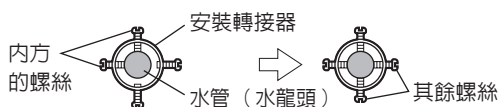
② 鬆動螺帽，使螺帽和本體間留出
3 毫米～4 毫米的間隙。



4 將本體用力推入到水龍頭上安裝

① 用手緊固內方的 2 個螺絲至接觸到水龍頭，並使水管保持於中央。

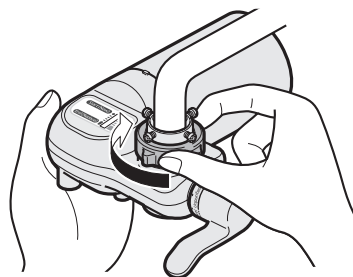
② 用螺絲起子緊固其餘 2 個螺絲。



5 用手旋轉螺帽並確實鎖緊

注意事項

- 緊固螺帽時請勿使用工具。
（將導致螺帽損壞。）
- 請勿旋轉本體緊固。
（螺絲部受力太大，將導致本體損壞。）



安裝後請確認本體不能輕易轉動、不搖晃。

使用方法

使用過濾水

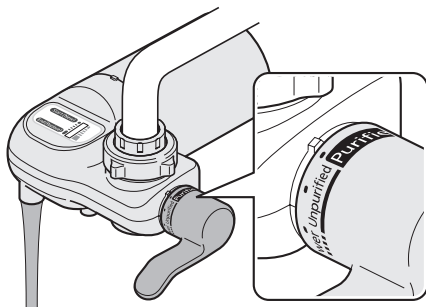
注意事項 • 請勿以 35℃ 以上的熱水通過濾心。（以防止吸附於活性碳的成分將釋出。）

Purified

過濾水

• 使用於烹調或飲用水

- 因與本體內部的空氣混合，過濾水中可能有小氣泡，並非異常。
- 使用新濾心時，隨水溫、水壓等條件而異，過濾水的出水量可能減少。請通水約 6 公升（約 3 分鐘）。（為了排除濾心內的空氣）



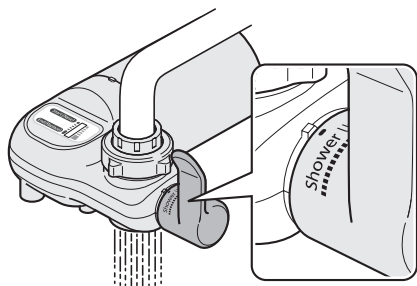
使用原水

注意事項 • 以熱水通水時，請使用不超過 80℃ 的熱水。（以防止變形和故障。）

Shower
.....

原水淋灑式

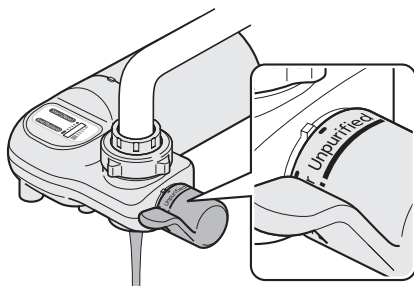
• 水不噴濺（洗餐具或蔬菜時適用）



Unpurified

原水直式

• 裝水、取水時適用



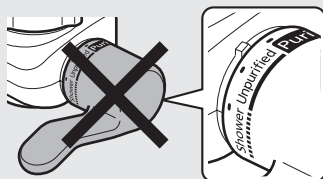
請遵守

請勿將切換手把停留在表示位置以外之處。

- 請勿將切換手把停留在「Purified」、「Shower」、「Unpurified」以外的位置。避免造成由本體及水龍頭漏水的原因。

操作切換手把時請慢慢進行。

- 避免造成漏水的原因。



本體勿與硬物碰撞。

- 避免造成安裝部位鬆動，以及本體故障的原因。

使用紅鏽含量多的自來水時，每天早上流出原水一陣子後再使用。

水電行施工後，流出原水一陣子後再使用。

- 為了使濾心壽命更長久。

■ 不小心以熱水通水時

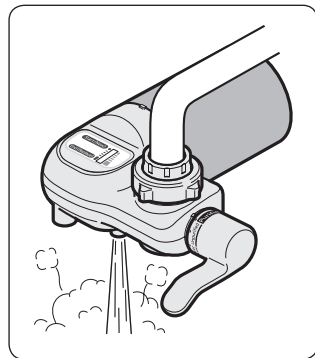
- 在過濾水端以熱水通水時，將啟動保護濾心的熱水防護機制（啟動溫度：約 60°C 以上），由熱水排出口排放出熱水。

（此時發出「嗶」聲，並非異常。）

注意事項

- 請立即關閉熱水，並在過濾水端通冷水 0.4 公升（約 12 秒鐘）加以冷卻。

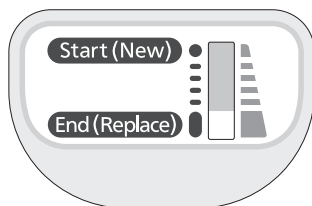
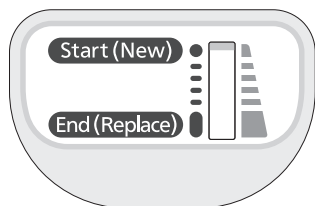
（此時由熱水排出口流出水一陣子，並非異常。）



有關濾心

有關更換時間

- 「濾心壽命顯示表」顯示過濾水的總通水量，告知濾心的更換時間（標準：紅色）。



- 剛開始使用時顯示記號於此位置。看不見紅色時，使用一陣子後將會出現。
- 已到更換時間（約1年）。（一天使用10公升時）

注意事項

- 除了更換濾心時以外，請勿卸下濾心。（顯示的總通水量將消失，而無法知道濾心的更換時間。）
- 更換新濾心後，紅色顯示將回到「Start (New)」的位置。
- 請由正上方看濾心壽命顯示表。（為了正確判定）

告知

- 濾心壽命顯示表顯示過濾後的總通水量。無法測知濾心的阻塞、過濾水流量減少、氣味與味道。
- 濾心壽命顯示表內部有水通過。因此濾心壽命顯示表視窗部可看見氣泡或水滴，並非故障。

標準交換時間

- 有下列情形時，即使濾心壽命顯示表尚未顯示為「End (Replace)」的位置，也請更換濾心。

■ 有下列現象發生時：

- 過濾水的出水量減少
- 無法去除氣味

■ 濾心已使用超過 1 年

濾心性能

■ 濾心的更換時間

一天使用 10 公升時 約 1 年

- 使用期間隨有機物含量及混濁度而明顯不同。
- 井水可能令使用期間減短。
- 10 公升 / 天的使用量，約為 3 ~ 4 人家庭的生水、茶、咖啡等飲用，及煮飯等烹調用的水量。
- 洗米、洗蔬菜和餐具等炊煮也使用過濾水時，使用量增加也令使用期間減短。

告知

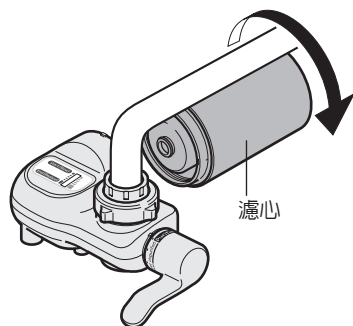
- 下面的情況時，過濾水的出水量可能會變少。
 - 水溫低。（水不容易通過濾心。）
 - 在水壓低的地區（不超過 70 kPa）使用的情況。
 - 自來水水壓常因區域自來水使用狀況而變化，不同使用時間帶過濾水的出水量可能有減少的情形。
 - 水電行剛施工後等停水後，過濾水的出水量可能減少。
- 濾心為塑膠製品。
使用後的濾心，請依當地規定的條例丟棄。

有關濾心

更換方法

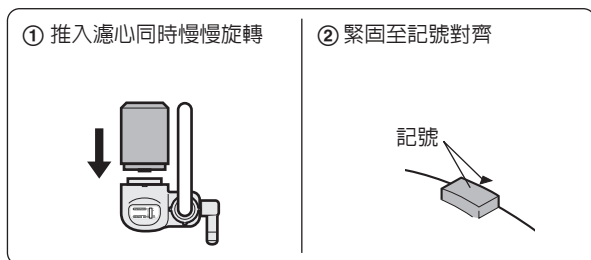
- 請先關閉水龍頭再進行操作。

1 卸下濾心



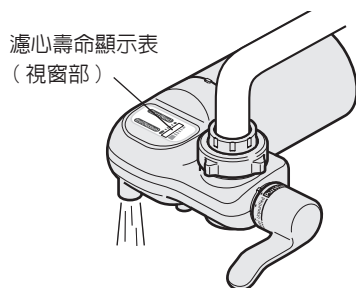
2 安裝新濾心

- 濾心壽命顯示表將回復到「Start (New)」的位置。
濾心傾斜或快速旋轉安裝時，可能無法回復到「Start (New)」的位置。此時請重新進行操作。



3 切換至過濾水通水約 6 公升（約 3 分鐘）

（為了排除濾心內的空氣）



注意事項

- 更換時可能有水溢出，請在水槽內進行操作。
- 請勿將濾心過度緊固。
（避免螺紋損壞造成漏水的原因。）
- 濾心壽命顯示表（視窗部）可能有氣泡累積，或可能產出「咻、咻」聲。
（此因正在排除濾心內的空氣，並非異常。）

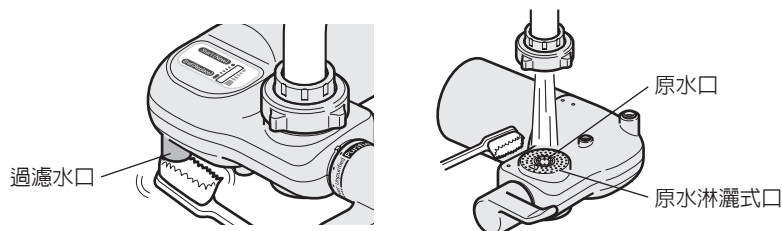
維修保養

本體

- 請用濕擦布清洗保養。
- 清洗保養時請勿使用去污粉、稀釋劑、酒精、清潔劑等。
避免造成樹脂割裂或變色的原因。

過濾水口 / 原水口 / 原水淋灑式口

- 請用乾淨的刷子清洗保養。
水槽中噴濺的水，可能將過濾水口、原水口、原水淋灑式口弄髒。



過濾網

- 濾水器安裝口的過濾網若囤積污垢，流量就會變小。

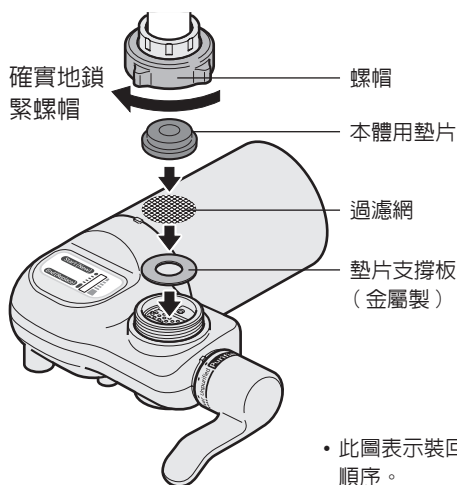
1 鬆開螺帽後，再卸下本體

2 取下過濾網，利用乾淨的刷子等來清潔

- 污垢累積於過濾網上。

3 依順序裝回

- 請勿忘記將本體用墊片裝回。



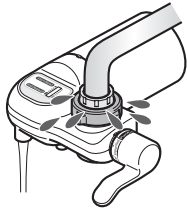
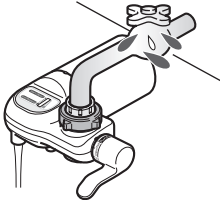
- 此圖表示裝回時的順序。

清潔後通水時，請先切換至「Unpurified」或「Shower」通水。

檢查與確認

安裝後或使用中，請檢查與確認是否漏水。

- 將切換手把旋轉至「Purified」，打開水龍頭，確認連接部位等是否有漏水。

漏水症狀	可能原因	處理方法（參閱頁數）
<p>由安裝部位漏水</p> 	是否確實安裝於水龍頭？	確實安裝好。 （參閱 30 ～ 35 頁）
	水龍頭的端部（和本體連接部分）是否有缺口或裂縫？	需要更換新的水龍頭。
	本體內部的零件是否正確裝入？	將本體用墊片、過濾網、墊片支撐板正確裝上。 （參閱 41 頁）
	本體用墊片是否已老舊？	需要更換新的墊片。
<p>由水龍頭漏水</p> 	水龍頭部位的墊片是否已老舊？	請接洽水電行。

故障排除

若有下列症狀

症狀	可能原因	處理方法（參閱頁數）
無法去除氣味	<ul style="list-style-type: none">• 是否超過濾心的更換時間？• 使用期間隨有機物含量及混濁度而明顯不同。	更換新的濾心。 （參閱 40 頁）
過濾水的出水量變少		
過濾水看起來白濁或發亮		
原水的出水量變少	過濾網是否有囤積污垢？	清潔過濾網。 （參閱 41 頁）
淋灑式的出水不均勻		
過濾水中混合著浮游物	過濾水口是否有沾附污垢？	清潔過濾水口。 （參閱 41 頁）
使用過濾水時原水淋灑式部位有漏水	切換手把的表示位置是否有偏差？	參閱 37 頁將切換手把停留於正規位置。 這樣仍然無法停止漏水時，請卸下本體，交由經銷商檢查與修理。
使用原水直式時原水淋灑式部位有漏水		
「熱水排出口」有熱水流出（可能也發出聲音）	是否有熱水通水？	立即關閉熱水，並請通冷水約 0.4 公升（約 12 秒鐘）。 （參閱 37 頁）
濾心壽命顯示表的視窗部可看見氣泡和水滴	濾心壽命顯示表內部有水通過。因此視窗部可看見氣泡或水滴。 → 並非故障。（參閱 38 頁）	

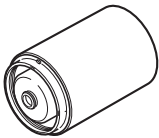
相關資訊

選購品

● 請向購買濾水器的經銷商購買。

濾心

型號：TK6305C1



規格

商品名稱	濾水器（TK6305P）	
材料種類	ABS 樹脂	
濾材成分	濾網、特殊濾網、粒狀活性碳、特殊陶瓷、防溢網、中空絲膜	
過濾能力	2.0 公升 / 分鐘（水壓 100 kPa 時）	
適用的最小動水壓	70 kPa	
濾材效果	游離殘留氯 污濁物 總三鹵甲烷 溶解性鉛 2-MIB	4,000 公升 *1
	細菌	除去率：99.99 %*2
	無法去除物質	溶解性鐵、重金屬（銀、銅等）、 鹽分（海水）
濾材（濾心）標準更換時間	一天使用 10 公升時 約 1 年	
本體尺寸	高 70 毫米 x 寬 152 毫米 x 深 161 毫米	
本體質量	約 390 公克（滿水時：約 610 公克）	
本體適用水壓（動水壓）	70 kPa ～ 350 kPa	
水管適用壓力（靜水壓）	70 kPa ～ 750 kPa	

- 數值是指在水溫 20℃時適用。
- 無法將硬水轉變為軟水。
- 濾材（濾心）的標準更換時間，隨著除去對象物質、使用水量、水質、水壓等因素而有明顯差異。

*1 JIS S 3201:2004 測試結果。
（污濁物）過濾能力下：除去率 50 % （其他）過濾能力下：除去率大於 80 %

*2 JIS S 3201:2010（附件 K）測試結果。

告知

- 總三鹵甲烷是什麼：氯仿、一溴二氯甲烷、二溴一氯甲烷、溴仿等四種化合物的總稱。
- 2-MIB 是什麼：2- 甲基冰片的縮寫，造成自來水霉臭味的物質之一。
- 溶解性鉛是什麼：溶解於水中的鉛。