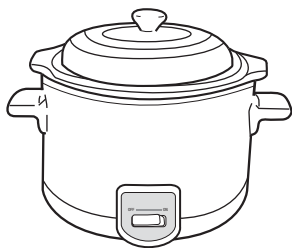


Panasonic[®]

Operating Instructions 使用說明書

Electric Slow Cooker 電器慢火鍋

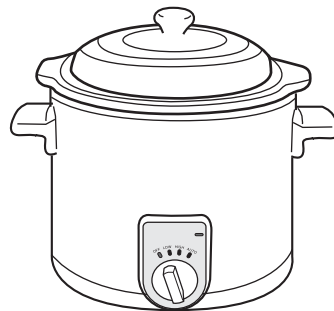
NF-M15B/M30B/M50B



NF-M15B



NF-M30B



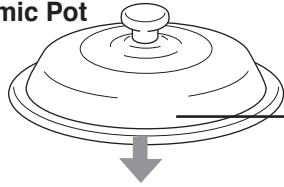
NF-M50B

Before operating this unit, please read these instructions completely.
在使用本機前，請詳閱讀此使用說明書。

Parts Identification and How to Use

1 Place the Ceramic Pot into the Body.

將活動瓦煲放入本體內。



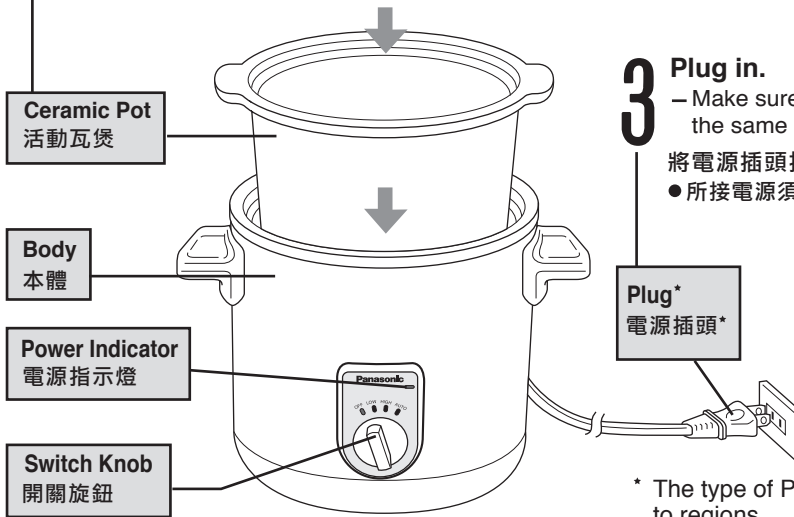
Glass Lid
玻璃蓋

2

– Maximum cooking volume is 90% the volume of the Ceramic Pot.
● 配料放入的最大量為瓦煲容量的90% 以下。

Place cooking ingredients in the Ceramic Pot and cover it.

將配料放入活動瓦煲內，蓋好蓋子。



3 Plug in.

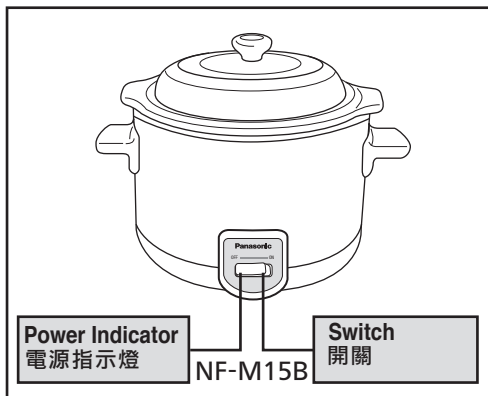
– Make sure voltage of the unit is the same as your local supply.

將電源插頭插在電源插座上。
● 所接電源須與電鍋規格相吻合。

NF-M30B/M50B

* The type of Plug differs according to regions

* 插頭的形狀是根據不同地區而不同。



Cautions 注意

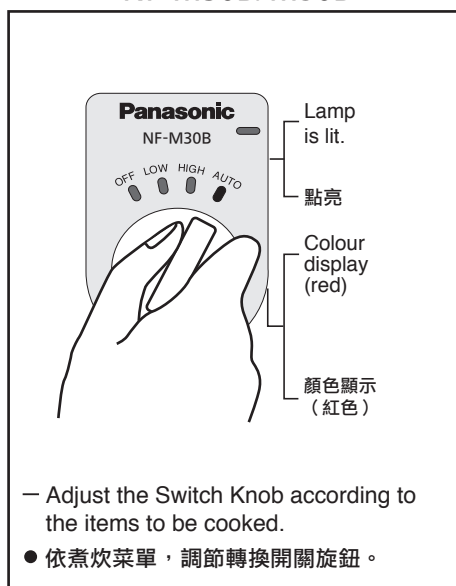
- Remove any moisture from Ceramic Pot.
- Certain dishes may not cook if the room temperature is below 5°C.

- 放入前，請搽乾活動瓦煲上附著的水分。
- 當室溫低於5°C時，有的食物不能煮炊。

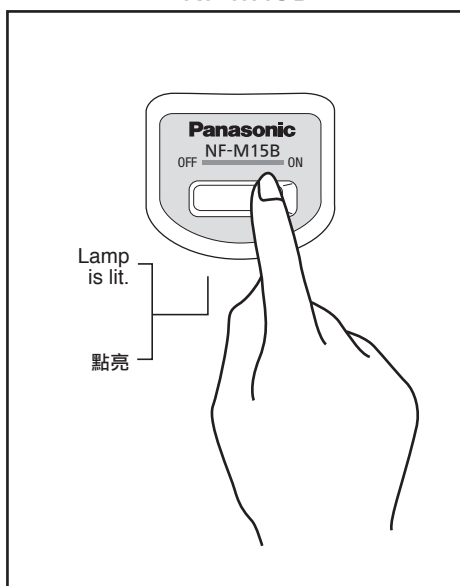
零件名稱和使用方法

4 Switch on. 打開開關

NF-M30B/M50B



NF-M15B



5 After use:

- Turn the Switch to OFF and remove the Plug.
- The Glass Lid and Ceramic Pot are hot. Use a cloth to hold them.

使用後處理

- 關上開關，拔下電源插頭。
- 手持毛巾等物打開蓋子和握持活動瓦煲，以免燙傷。

Safety Precautions

遵守事項

- This product is intended for household use only.
- This appliance is not intended for use by persons (including children) with reduced physical, sensory or mental capabilities, or lack of experience and knowledge, unless they have been given supervision or instruction concerning use of the appliance by a person responsible for their safety. Children should be supervised to ensure that they do not play with the appliance.
- Do not use on carpets or other surfaces that have low heat resistance as this could cause scorching.
- Never turn the Switch on when Ceramic Pot is empty as this could cause malfunction.
- Never insert water in the Ceramic Pot if it has been heated up with nothing in it as this could cause the pot to crack.
- Never place the pot directly on a fire as this could cause cracking.
- The Glass Lid and Ceramic Pot are fragile. Handle them with care.
- Never place ingredients directly in the Body as this could cause a breakdown.
- Be careful in handling the equipment during and after use so as to avoid burns.
- DO NOT wash the Body or immerse the cooker in water or any liquid, otherwise current leakage or failure may take place.
- If the supply cord is damaged, it must be replaced by the manufacturer, its service agent or similarly qualified persons in order to avoid a hazard.

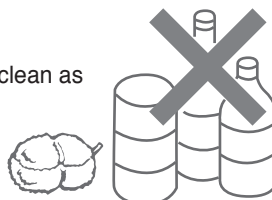
-
- 此產品只供家庭使用。
 - 此產品不適合身體、感官或思維有缺陷者，或缺乏經驗與知識者使用（包括兒童）。除非他們的安全監護人給予他們關於產品使用適當的監督與指示。必需監督兒童以確保他們不會將產品當成玩具。
 - 不要在地毯等表面上使用（以免燒焦）。
 - 不要乾煮炊（以免造成故障）。
 - 不要在乾煮炊後的活動瓦煲內倒入水（以免破裂）。
 - 不要將活動瓦煲直接放在火上（以免破裂）。
 - 玻璃蓋和活動瓦煲為易碎品，請小心使用。
 - 不要將配料直接放入本體內（以免造成故障）。
 - 使用中和使用後請注意不要燙傷。
 - 不要用水洗機體或把電鍋浸在水裡或任何液體裡，避免漏電或故障發生。
 - 當電線組合損壞時，務必以由廠商，其服務中心或合格人員更換，以避免危險。

How to Clean

清洗方法

- Be sure to remove the Plug and allow the unit to cool.
- Glass Lid and Ceramic Pot

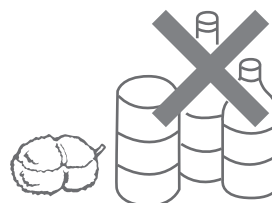
- * Clean with dish washing detergent and a sponge.
Never use benzene, thinner, scouring powder or a scrub brush to clean as these could mar the surfaces.



- * Never leave the Ceramic Pot immersed in water for long periods.
Water could enter from the white areas on the bottom and may cause cracking when the pot is heated.

- Body
Clean with a slightly damp cloth.
* Do not insert water in the Body when cleaning as this could cause the cooker to malfunction.

-
- 從電源插座上拔下電源插頭及讓慢火鍋冷卻。
 - 玻璃蓋和活動瓦煲。
用廚房用洗劑和海棉清洗。
※不要使用汽油、信那水、去垢粉、炊帚。
(以免損害表面)



※不要將活動瓦煲長時間浸泡在水中。
(否則水可從底部白色部分浸入，加熱時可導致產生裂紋)

- 本體
用扭乾的毛巾擦拭。
※不要用水洗。(否則可導致故障)

Some Helpful Hints

Choice of settings

LOW (NF-M30B, M50B)

Cooks with a low calorie. Use for cooking ingredients which is difficult for the flavour to penetrate or where cooking could cause the ingredients to crumble, etc.

HIGH (NF-M15B, M30B, M50B)

Cooks with a high calorie. Use for ordinary slow cooking and decocting, etc. Cooking will take a few hours.

AUTO (NF-M30B, M50B)

Cooks with a high calorie for the first few hours, then automatically shifts to cooking with a middle calorie. Use for decocting herbal soup, etc.



火力強度的設定

低強度 (LOW) (NF-M30B, M50B)

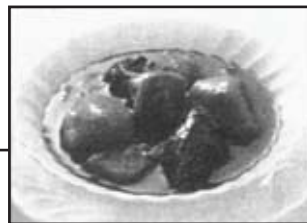
用於低火烹調。特別較適用於難以滲味或烹調中易成碎糟等食品的烹調。

高強度 (HIGH) (NF-M15B, M30B, M50B)

用於高火烹調。常用於食品的煨燉，前熬等數小時的長時間烹調。

自動設定 (AUTO) (NF-M30B, M50B)

烹調開始幾小時內高火烹調，然後自動轉為中火烹調。特別適用於中草藥等的前熬。



煮炊頁

Setting examples

Menu	Setting
Boiling a fish in stock	LOW
Soups	HIGH
Rice porridge	HIGH
Stews	HIGH
Herb soup (decoction)	AUTO

Other helpful hints

- Preheat liquids before use.
You can cook more quickly if you preheat stocks, soups and liquid seasonings prior to use.
- Be sure to place the Glass Lid on the Ceramic Pot when cooking.
It's not necessary to stir the ingredients during cooking.
Repeatedly removing the Glass Lid will decrease the temperature in the Ceramic Pot. Once you turn the Switch on, leave the cooking to the pot.

火力強度設定示例

烹調內容	強度設定
清燉鮮魚	LOW
菜湯	HIGH
米粥	HIGH
燉肉	HIGH
煎中藥湯	AUTO

- 使用前先將流質材料預熱。
用電器慢火鍋烹調食品前，先放置原汁、菜湯等流質材料於其中作預熱，可大大提高電器慢火鍋的烹調效率。
- 烹調時，請蓋上玻璃蓋，於燉煮時無須攪伴。
不時地揭開烹調容器之蓋會導致容器中烹調溫度的降低。置烹調食品於電器慢火鍋中，按下烹調開始按鈕後，坐等食品香熟即可。

Specifications

規格

Model No.		NF-M15B	NF-M30B	NF-M50B
Power supply		220 V 50 - 60Hz		
Power consumed	LOW	—	120 W	155 W
	HIGH	110 W	180 W	260 W
	AUTO	—	180 W to 140 W shift	260 W to 190 W shift
Cooking capacity (pot capacity)		1.35 L (1.5 L)	2.7 L (3.0 L)	4.5 L (5.0 L)
Dimensions (H x W x D)		20.6 x 23.0 x 21.0 cm	27.0 x 29.0 x 24.5 cm	28.3 x 33.9 x 30.9 cm
Weight (approx.)		2.4 kg	3.3 kg	4.7 kg
Cord length		1.4 m		

型 號		NF-M15B	NF-M30B	NF-M50B
電 源		220 V 50 - 60Hz		
消耗電力	LOW (低)	—	120 瓦	155 瓦
	HIGH (高)	110 瓦	180 瓦	260 瓦
	AUTO (自動)	—	180 瓦至140 瓦轉換	260 瓦至190 瓦轉換
烹調容量 (烹調容器容量)		1.35 公升(1.5 公升)	2.7 公升(3.0 公升)	4.5 公升(5.0 公升)
尺寸(高 X 寬 X 深)		20.6 x 23.0 x 21.0 厘米	27.0 x 29.0 x 24.5 厘米	28.3 x 33.9 x 30.9 厘米
重量(約)		2.4 公斤	3.3 公斤	4.7 公斤
線 長		1.4 公尺		

Panasonic Manufacturing Malaysia Berhad (6100-K)

No. 3, Jalan Sesiku 15/2, Section 15,
Shah Alam Industrial Site,
40200 Shah Alam,
Selangor Darul Ehsan.

Printed in Malaysia

<http://panasonic.net>

FZ50H1841