

Panasonic®

Operating Instructions
使用說明書

(Household) Rechargeable Shaver
(家用) 充電式刮鬍刀

Model No. ES-RC30
型號

English	2
中文	7

Before operating this unit, please read these instructions completely and save them for future use.
使用本產品前，請仔細閱讀此說明書，並妥善保存以備未來使用。



Thank you for choosing a Panasonic shaver. Please read all instructions before use.

Important

This shaver has a built-in rechargeable battery. Do not throw into fire, apply heat, or charge, use, or leave in a high temperature environment.

► Before use

This WET/DRY shaver can be used for wet shaving with shaving lather or for dry shaving. You can use this watertight shaver in the shower and clean it in water. The following is the symbol of Wet shaver. The symbol means that the hand-held part may be used in a bath or shower.



Treat yourself to wet lather shaves for at least three weeks and notice the difference. Your Panasonic WET/DRY shaver requires a little time to get used to because your skin and beard need about a month to adjust to any new shaving method.

► Using the shaver

Caution

The outer foil is very thin and can be damaged if not used correctly. Check that the foil is not damaged before using the shaver. Do not use the shaver if the foil etc. is damaged as you will cut your skin.

- Terminate the usage when there is abnormality or failure.
- Do not share with your family or other people.
- This appliance is not intended for use by persons (including children) with reduced physical, sensory or mental capabilities, or lack of experience and knowledge, unless they have been

given supervision or instruction concerning use of the appliance by a person responsible for their safety. Children should be supervised to ensure that they do not play with the appliance.

► Charging the shaver

- Never use the AC adaptor in the bathroom or shower room.
- Do not use any AC adaptor other than this AC adaptor (RE7-62).
- Plug in the power plug into a household outlet where there is no moisture and handle it with dry hands.
- Hold the power plug when disconnecting it from the household outlet. If you tug on the power cord, you may damage it.
- The supply cord cannot be replaced. If the cord is damaged, the AC adaptor should be scrapped.

► Cleaning the shaver

- If you clean the shaver with water, do not use salt water or hot water. Do not soak the shaver in water for a long period of time.
- Clean the housing only with a soft cloth slightly dampened with tap water or soapy tap water. Do not use thinner, benzine, alcohol or other chemicals.
- Do not wash the AC adaptor with water.

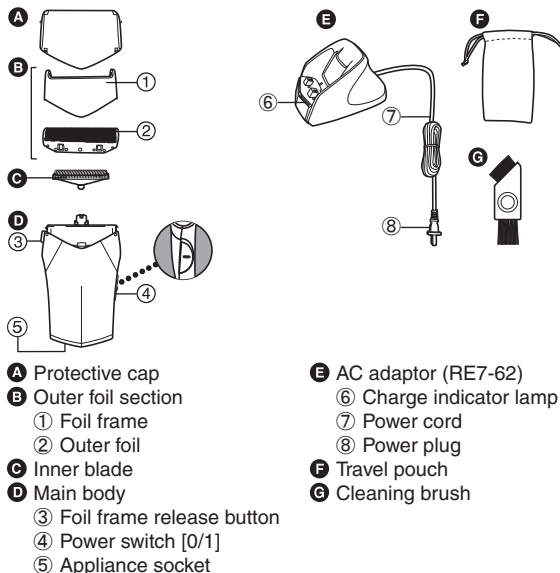
► Storing the shaver

- Store the shaver in a place with low humidity after use.
- Do not store the shaver where it will be exposed to direct sunlight or other heat sources.
- Remove the shaver from the AC adaptor when storing it.
- Please properly store or dispose the plastic bag of the appliance to avoid any accidents, such as infants suffocation, etc. Keep the plastic bag away from infants.
- Charge the appliance correctly according to these Operating Instructions. (See page 3 "Charging".)
- This appliance contains battery that is only replaceable by skilled persons. Please contact an authorized service center for the details of repair.

- The following symbol indicates that a specific detachable power supply unit is required for connecting the electrical appliance to the supply mains. The type reference of power supply unit is marked near the symbol.



Parts identification



Charge

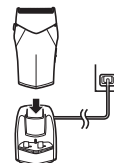
Charging the shaver

Perform the following steps to charge the shaver if it seems to lose the speed.

1 Turn off the shaver and insert it in the AC adaptor until it clicks as illustrated.

2 Plug in the power plug into a household outlet.

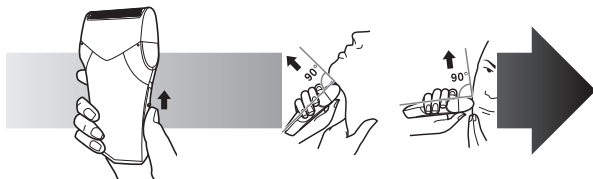
The charge indicator lamp glows red.



- Charging is completed after approx. 8 hours.
- The charge indicator lamp glows and stays on until the power plug is disconnected from a household outlet.
- Recommended ambient temperature for charging is 0-40 °C. The battery may not charge under extreme low or high temperatures.
- When charging the shaver for the first time or when it has not been in use for more than 6 months, the charge indicator lamp may not glow. It will eventually glow if kept connected.

Shave

Using the shaver



1 Slide the power switch upwards.

2 Hold the shaver as illustrated above and shave.

- Adequate ambient temperature for using is 0-40 °C. If you use the appliance in temperature outside of the recommended range, it may stop functioning.

Start out shaving by applying gentle pressure to your face. Stretch your skin with your free hand and move the shaver back and forth in the direction of your beard. You may gently increase the amount of pressure as your skin becomes accustomed to this shaver. Applying excessive pressure does not provide a closer shave.

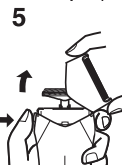
Clean

Cleaning the shaver

1. Remove the shaver from the AC adaptor.
2. Apply some hand soap and some water to the outer foil.
3. Turn the shaver on.
4. Turn the shaver off after 10-20 seconds.



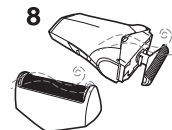
5. Remove the outer foil section and turn the shaver on.



6. Clean the shaver and the outer foil section with running water.
7. Wipe off any drops of water with a dry cloth.



8. Dry the outer foil section and the shaver completely.
9. Attach the outer foil section to the shaver.

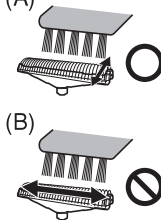


Cleaning with the brush

Clean the inner blade using the short brush by (A) moving it in direction (A).

Clean the outer foil and the shaver body using the long brush.

- Do not move the short brush in direction (B) as it will damage the inner blade and affect its sharpness.
- Do not use the short brush to clean the outer foils.

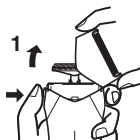


Replacing the outer foil and the inner blade

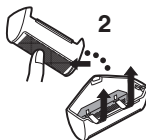
outer foil	once every year
inner blade	once every two years

► Replacing the outer foil

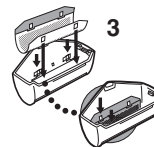
1. Press the foil frame release button and lift the outer foil section upwards.



2. Gently push the outer foil in the way as illustrated. Then it will pop up from the foil frame.



3. The new outer foil should be slightly bent and pushed in until it is hooked in the foil frame.



► Replacing the inner blade

1. Press the foil frame release button and lift the outer foil section upwards.



2. Remove the inner blade.
 - Do not touch the edges (metal parts) of the inner blade to prevent injury to your hand.
3. Insert the inner blade until it clicks.

► Replacement parts

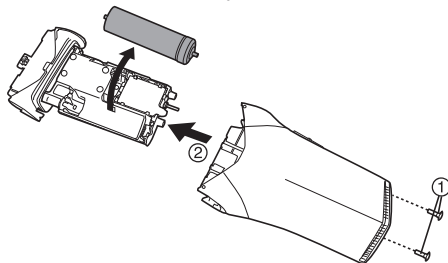
Replacement parts are available at your dealer or Service Center.

Replacement parts for ES-RC30	Outer foil	WES9941
	Inner blade	WES9942

Removing the built-in rechargeable battery

Remove the built-in rechargeable battery before disposing of the shaver. Please make sure that the battery is disposed of at an officially designated location if there is one. Do not dismantle or replace the battery so that you can use the shaver again. This could cause fire or an electric shock. Replace it at an authorized service center.

- Remove the shaver from the AC adaptor when removing the battery.
- Press the power switch to turn on the power and then keep the power on until the battery is completely discharged.
- The battery is to be disposed of safely.
- Perform steps ① to ② and lift the battery, and then remove it.



For environmental protection and recycling of materials

This shaver contains a Nickel-Metal Hydride battery.

Please make sure that the battery is disposed of at an officially assigned location, if there is one in your country.

Specifications

Power source	See the name plate on the AC adaptor.
Motor voltage	1.2 V DC
Charging time	Approx. 8 hours

This product is intended for household use only.

感謝您選用 Panasonic 刮鬍刀。使用前請詳讀所有說明。

安全須知

本刮鬍刀內建充電電池。請勿丟入火中、接觸熱源或在高溫的環境中充電、使用，或留置在高溫的環境中。

► 用途

此款乾 / 濕通用刮鬍刀可用於直接刮鬍，也可在塗抹刮鬍膏後進行濕式刮鬍。此刮鬍刀具防水功能，因此可在淋浴時使用，也可在水中清洗。以下是濕式刮鬍刀的標誌。該標誌表示本體件可以在盆浴或淋浴時使用。



連續三周使用刮鬍膏進行濕式刮鬍，然後您能體會到一些變化。由於您的皮膚和鬍鬚需要大約一個月的時間來適應新的刮鬍方式，因此您可能需要一點時間來適應此款 Panasonic 乾 / 濕通用刮鬍刀。

警告及注意事項

► 使用刮鬍刀

小心

外層網面是很薄的，如使用不當可能會破壞網面。請在使用刮鬍刀前檢查網面有否受損。如網面受損，請勿使用刮鬍刀，因可能會弄傷您的皮膚。

- 發生異常或故障時請停止使用。
- 請勿與家人或其他人共用刮鬍刀。
- 患有體能、感官或智力減退，或缺乏經歷和知識之人士（含小孩），在無人監護或未獲告知如何使用的情况下不得使用本產品。

請勿讓小孩使用本產品。

► 為刮鬍刀充電

- 絕對不可在浴室或淋浴間使用電源供應器。
- 請勿使用本電源供應器（RE7-62）之外的任何電源線或電源供應器。
- 把手擦乾後，再將電源插頭插入乾燥的家用插座。
- 從家用插座拔掉電源插頭時請以手抓緊電源插頭，如您拉扯電源線，可能會損壞電源線。
- 請勿自行換電源線，電源線一但損壞應當廢棄本電源供應器，勿再使用。

► 清洗刮鬍刀

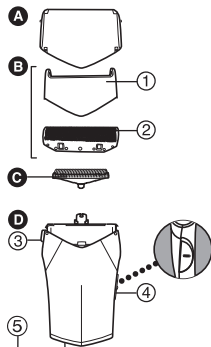
- 如您以水清洗刮鬍刀，請勿使用鹽水或熱水。切勿將刮鬍刀長時間浸泡於水中。
- 請以自來水或肥皂水稍微浸濕的軟布來清潔外殼。切勿使用稀釋劑、揮發油、酒精或其他化學品。
- 請勿用水清洗電源供應器。

► 收納刮鬍刀

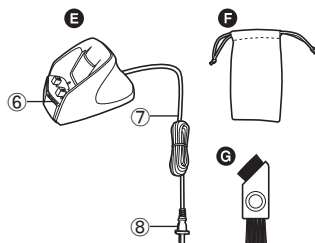
- 使用後將刮鬍刀收納在低濕度的地方。
- 請勿將刮鬍刀收納在陽光直接照射或其他熱源直接接觸的地方。
- 收納時，請從電源供應器上取下刮鬍刀。
- 請妥善收納或棄置本設備的塑膠袋，以免發生如嬰兒窒息等任何意外。請將塑膠袋放在嬰兒無法接觸的地方。
- 根據使用說明書將產品正確充電。（請參閱第 8 頁「充電」。）
- 本產品包含僅能交由專業人員更換的電池。如需詳細的維修資訊，請洽詢 Panasonic 直屬服務站。
- 以下符號表示，將電器插入電源插座時，需使用指定的可拆除式電源裝置。電源裝置的型號標示在符號旁邊。



部件說明



- A 保護蓋
- B 外層網面部分
 - ① 網層
 - ② 外層網面
- C 內層刀片
- D 主體
 - ③ 網層拆除按鈕
 - ④ 電源開關 [0/1]



- ⑤ 充電插座
- E 電源供應器 (RE7-62)
 - ⑥ 充電狀態指示燈
 - ⑦ 電源線
 - ⑧ 電源插頭
- F 輕便旅行袋
- G 清潔毛刷

充電

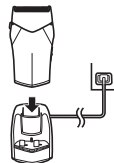
為刮鬍刀充電

若感覺刮鬍刀速度下降，請依下列方式進行刮鬍刀充電。

1 關閉刮鬍刀電源，將它插入電源供應器直到卡住為止，如圖所示。

2 將電源插頭插入家用插座。

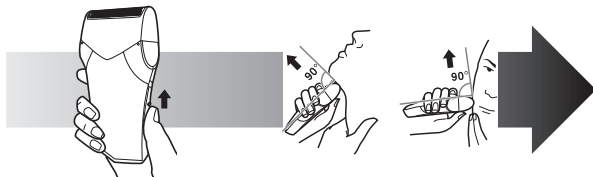
充電狀態指示燈亮起紅燈。



- 充電約 8 小時後完成。
- 充電狀態指示燈會持續亮燈，直到從家用插座拔下電源插頭為止。
- 建議的充電環境溫度為 0-40℃。在極低或極高的溫度下，電池可能不會充電。
- 刮鬍刀第一次充電時或未使用超過 6 個月，充電狀態指示燈可能不會亮起。如繼續保持連結，最後會亮起。

刮鬍

使用刮鬍刀



1 將電源開關向上滑動。**2** 依照上圖示握著刮鬍刀使用。

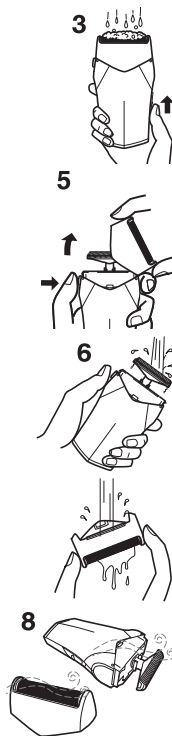
- 適當的使用環境溫度為 0-40℃。如果在超出建議範圍外的溫度下使用本設備，它可能停止正常運作。

將刮鬍刀輕輕按壓在您的臉上。以另一隻手按著皮膚，並以刮鬍刀來回刮鬍。當您習慣了這力道後，可慢慢加壓。過度加壓未必可刮得更徹底。

清潔

清洗刮鬍刀

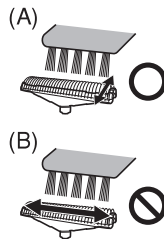
1. 從電源供應器上取下刮鬍刀。
2. 在外層網面上塗抹一些肥皂和水。
3. 打開刮鬍刀電源。
4. 10-20 秒後，關掉刮鬍刀。
5. 取出外層網面部分並打開刮鬍刀電源。
6. 用清水清潔刮鬍刀和外層網面部分。
7. 用乾布擦去水滴。
8. 讓外層網面部分和刮鬍刀完全乾燥。
9. 把外層網面部分安裝至刮鬍刀。



以毛刷清潔

利用毛刷依著 (A) 方向來清潔內層刀片。
利用長刷來清潔外層網面和刮鬍刀機身。

- 切勿以 (B) 方向來使用短刷，因此舉會損耗內層刀片，令刀片不鋒利。
- 切勿以短刷清潔外層網面。

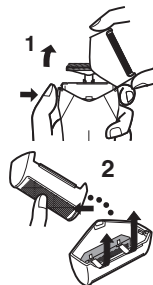


更換外層網面及內層刀片

外層網面	每年一次
內層刀片	每兩年一次

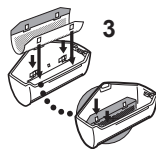
► 更換外層網面

1. 按住網層拆除按鈕並向上提起外層網面部分。



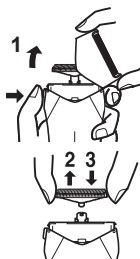
2. 依圖示方式輕輕按下外層網面。外層網面隨後會從網層上彈起。

3. 新的外層網面應當稍稍彎曲並按入，直至扣入網層為止。



►更換內層刀片

1. 按住網層拆除按鈕並向上提起外層網面部分。



2. 拆掉內層刀片。
 - 切勿觸摸刀鋒〔金屬部分〕以免受傷。
3. 插入內層刀片直至發出一聲“卡嗒”。

►更換零件

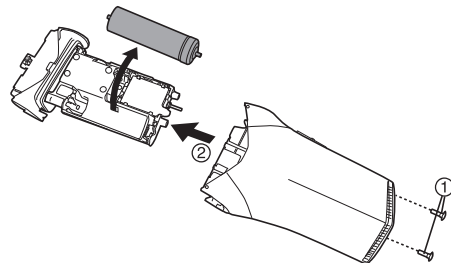
您可以在經銷商或 Panasonic 直屬服務站購買更換零件。

ES-RC30 的更換零件	外層網面	WES9941
	內層刀片	WES9942

拆除內置充電電池

此刮鬍刀內的電池請勿由消費者自行替換。請委託 Panasonic 直屬服務站處理。下列的程序只適用於正確棄置電器前，把內置充電電池拆出。

- 取出電池時，請從電源供應器上取下刮鬍刀。
- 按電源開關接通電源，保持電源的開啓狀態直至電池完全放電。
- 電池必須安全地處置。
- 執行步驟 ① 至 ② 以拉出並拆除電池。



廢電池請回收

只限於台灣

環保及資源回收

此刮鬍刀內藏鎳氫電池。

如您的國家有指定認可棄置電池的地方，請確保將電池棄置於這些地方。

規格

電源	請參閱產品上標籤。
發動機電壓	1.2 伏特直流電
充電時間	約 8 小時

為安全起見，請定期檢查使用多年的電器產品。
此產品只適於家居內使用。

委製商：Panasonic Corporation

商品原產地：中國

進口商：台灣松下銷售股份有限公司（僅限台灣）

公司地址：新北市中和區建六路 57 號

連絡電話：0800-098800

網址：<http://www.panasonic.com/tw/>

【只限於台灣】限用物質名稱及含量列表

設備名稱：充電式刮鬍刀，型號：ES-RC30						
單元	限用物質及其化學符號					
	鉛 (Pb)	汞 (Hg)	鎘 (Cd)	六價鉻 (Cr ⁶⁺)	多溴聯苯 (PBB)	多溴二苯醚 (PBDE)
塑膠部件	○	○	○	○	○	○
金屬部件	—	○	○	○	○	○
電路板部件 / 電子元件	—	○	○	○	○	○
電源線 / 配線	—	○	○	○	○	○
電源供應器	—	○	○	○	○	○

備考 1. “○” 係指該項限用物質之百分比含量未超出百分比含量基準值。

備考 2. “—” 係指該項限用物質為排除項目。

Panasonic Corporation

<http://www.panasonic.com>

© Panasonic Corporation 2014-2020