

Panasonic®

Operating Instructions

Dishwasher (Household Use)

使用說明書

洗碗碟機 (家用型)

Model No. **NP-TH1HK**



A copy of the Installation Instructions is attached.

Thank you for purchasing this Panasonic product.
Before using this appliance, please read these instructions and **Safety Precautions (Pages EN1 - EN2)** carefully and keep this manual for future reference.

隨附安裝說明

衷心感謝您購買 Panasonic 產品。
使用產品前請仔細閱讀並妥善保管本使用說明書。
使用前必須仔細閱讀「**安全注意事項**」(第 HK1 - HK2 頁)。

Panasonic Corporation
Web Site: <http://www.panasonic.com>

© Panasonic Corporation 2018

P9901-13T00
S1218-0
Printed in China



English

中文

Table of Contents

Safety Precautions	EN1	Quick Start Guide	EN6	Maintenance	EN13
Notes on Use	EN2	Instructions for Use	EN7	Frequently Asked Questions	EN15
Parts Identification/Accessories	EN3	• Loading the Dishwasher	EN7	Error Indication	EN16
Confirmation and Preparation before Use	EN5	• Adding Detergent and Washing	EN9	• Freezing prevention, Not in use for a long time	EN17
		• Drying · Delay Start · Changing the settings	EN11	Troubleshooting	EN18
				Installation Instructions	EN19
				Specifications	EN25

目錄


安全注意事項	HK1	快速使用指南	HK6	保養	HK13
使用要求	HK2	使用方法	HK7	常見問題	HK15
部件名稱 / 附件	HK3	• 擺放餐具	HK7	異常提示	HK16
使用前的確認與準備	HK5	• 添加洗滌劑 · 清洗	HK9	• 預防凍結 · 長時間不使用	HK17
		• 乾碗 · 延遲啟動 · 更改設定	HK11	故障排除	HK18
				安裝方法	HK19
				規格	HK25


Safety Precautions

must observe


To prevent personal injuries and property damages, be sure to observe the following instructions.


■ The following indicates the degree of hazards and damages caused by incorrect operation.

 **WARNING** Indicates a potential hazard may result in serious personal injury or death if not avoided.

 **CAUTION** Indicates a potential hazard may result in minor or moderate personal injury if not avoided.

■ The following symbols indicate what you must observe.

 Indicates actions which are prohibited.

 Indicates actions which must be enforced.

■ To prevent fire, burns or electric shock **WARNING**

This appliance is not intended for use by persons (including children) with reduced physical, sensory or mental capabilities, or lack of experience and knowledge, unless they have been given supervision or instruction concerning use of the appliance by a person responsible for their safety. Children should be supervised to ensure that they do not play with the appliance.

Do not splash or sprinkle water on the appliance body. (It may cause fire or electric shock.)

Keep the appliance away from a flame or heat sources. (It may cause a fire.)

• Mosquito coils, cigarettes, candles, electric heaters, etc.

Ensure at least 15 cm clearance between the appliance and heat sources such as a gas stove. (It may cause a fire.)

Do not bang the appliance while it is in operation.

(It may cause electric shock, electricity leakage, or short circuit, resulting fire.)

Do not open the dishwasher during operation or within 30 minutes after the end of the operation. (The high temperature inside the appliance, washing water or steam may cause burns.)

→ Please wait for 30 minutes after the end of the operation before opening the dishwasher (to take out the items, carry out cleaning or maintenance).

→ If you need to open the dishwasher during operation, you must pause the operation first and open the door carefully and slowly.

Do not disassemble, repair or modify the appliance.

(It may cause fire or injury due to abnormal operation.)

Do not use the power cord or power plug incorrectly. (It may cause fire or electric shock.)

● Do not damage the cord or plug; do not modify, forcibly bend, twist, pull, load with heavy objects, bundle, or place near heat sources.

→ If the cord or plug is damaged, it must be replaced by the manufacturer, its Service Centre or other relevant qualified persons in order to avoid a hazard.

● Do not use wet hands to plug or unplug the power plug.

● Do not use if the cord or plug is damaged.

Please use the power cord and power plug correctly.

● Use exclusively one power socket with the rating of 10 A/220 V AC.

(If the socket is shared with other electrical appliances, it may cause fire due to heat.)

● The power plug must be fully inserted into the power socket. (Otherwise, it may cause fire due to electric shock or heat. Do not use if the plug is damaged or the socket is loose.)

● Wipe the plug periodically with a dry cloth. (Dust or moisture built up on the plug may cause poor insulation, resulting fire.)

● Be sure to unplug the appliance if you do not intend to use it for a long period of time or when you perform cleaning or maintenance.

● When unplugging the appliance, always hold and pull the plug (instead of pulling the cord) (as it may cause fire due to electric shock or short circuit).

Make sure this appliance is reliably earthed.

(There will be the risk of electric shock caused by malfunction or leakage.)

→ Be sure to use a single-phase, two-pole, earthed power socket or hire a qualified person to carry out earthing of the appliance.

■ To prevent fire, burns or electric shock **WARNING**

Knives and other cutlery with sharp points must be loaded in the baskets pointed down or placed in a horizontal position. (It may cause cuts.)

If abnormality or error occurs, stop using the appliance immediately, close the supply valve and unplug the power plug.

(It may cause smoking, combustion, or electric shock.)
→ Contact Service Centre for inspection and repair.

Examples of abnormality or error

• Sometimes the appliance does not operate after the power is turned on.

• The door does not open or close normally.

• Abnormal sound is heard during operation.

• The appliance body is deformed or becomes abnormally hot.

■ To prevent fire or injury **CAUTION**

Do not put in knives and choppers (to avoid damage to the dishwasher).

Do not lean or press on the open door with force

(as the appliance may topple or fall, causing injuries).

Do not stay near or touch the drain hose or vent (as the exhaust hot water, hot air or steam may cause burns).

If the appliance is connected with a water heater, be careful of the hot water that may come out when you turn on another tap (as the outflow of hot water may cause burns).

Do not forcibly close the door if the utensils protrude from the dishwasher (as this may cause the door to deform or hot water may squirt out resulting burns).

When opening the door, do not pry open the upper part of the door

(as this may cause the door to deform or hot water may squirt out resulting burns).

Open and close the door carefully to avoid pinching your fingers (which may cause injuries)

The door should not stay in an open position (as this may cause the utensils to tumble and fall over resulting injuries)

Be sure to close the water tap every time after operation. (It may cause water leakage.)

This appliance is intended to be used in household and similar applications such as:

• staff kitchen areas in shops, offices and other working environments;

• farm houses;

• by clients in hotels, motels and other residential environments;

• bed and breakfast type environments.

Notes on Use

■ The dishwasher must be used correctly

● Do not place the dishwasher in a location near electrical appliances such as a TV or radio (which may cause distorted images or noises).

● Do not pour water/hot water. (Water may leak or enter components.)
Repair or service may be needed. (This is out of scope of warranty.)

● Do not use the appliance other than for its washing or drying function. (Otherwise, it may cause a failure.)

● Do not tilt or move the appliance during operation (which may cause water leakage).

● The door should not be left in an open position. (This could present a tripping hazard.)

● If the dishes are heavily soiled with grease, increase an appropriate amount of dishwasher detergent. (Otherwise, it may cause odour.)

■ Make sure to use dishwasher detergent.

● Do not use kitchen detergent or baking soda. (Excessive foam may be generated causing water leakage or malfunction).

→ Always use dishwasher detergent (referred to as dishwasher tablet or dishwasher powder)



● Any kitchen detergent used for soaking or pre-wash must be completely washed away before the utensils are loaded into the dishwasher.

Reminder

● Do not install in a place where freezing may occur (below 0 °C).

(If not properly handled after freezing, it may cause damage to the supply valve or pipes.)
→ If draining is required for freezing prevention, please contact Service Centre.

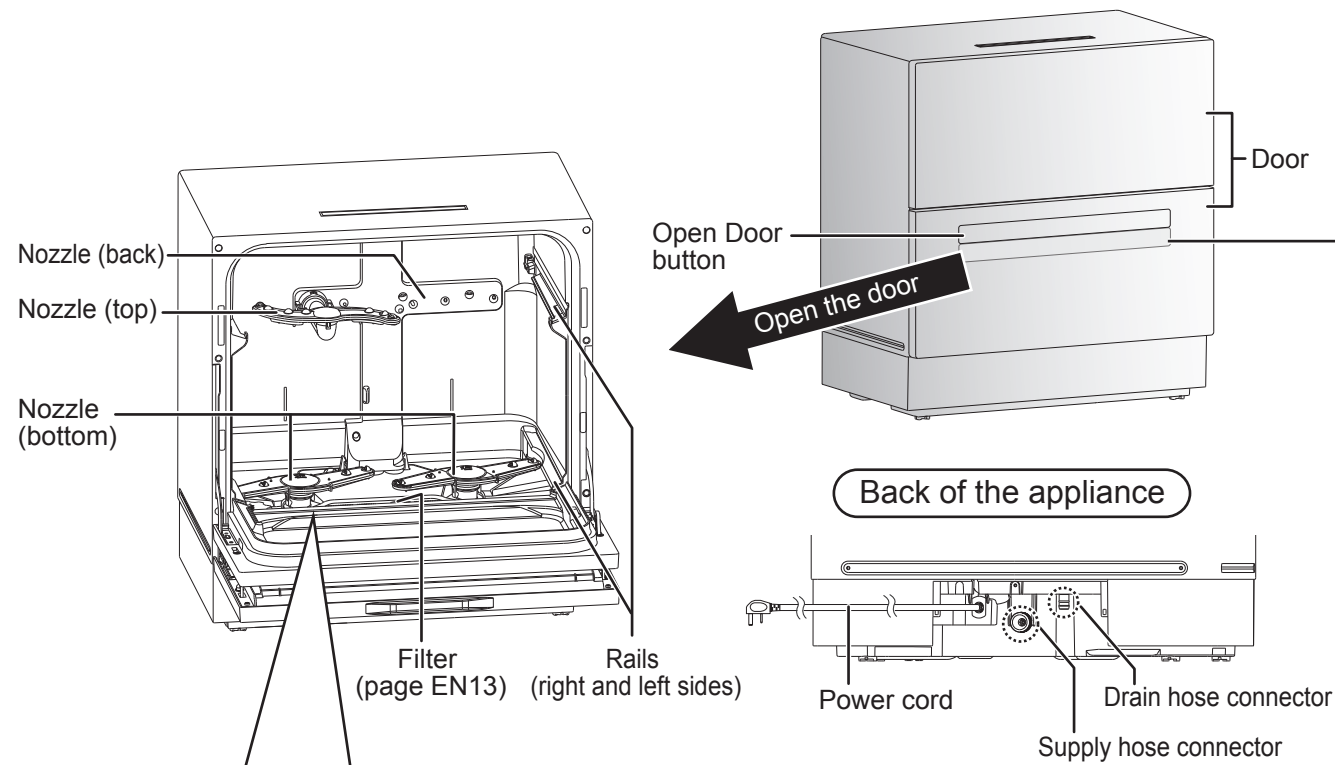
● Do not use if the water contains impurities, as it may cause poor water supply and malfunction.

● This appliance may have a rubber or resin smell for a while after it is purchased.

There are no adverse effects to the human body, and the odour will disappear after a period of time.

● In this manual, "x" indicates actions that are incorrect or prohibited while "o" indicates actions that are correct or appropriate.

Parts Identification/Accessories



Upper basket

Removing the basket
As shown in the illustration, lift up the convex part of the basket from the concave part and pull it out.

Attaching the basket
To attach the basket, do the reverse of removing it.

Lower basket

The cover grid can be removed following the direction of the arrow.

Removing the basket
Pull out the basket, then lift up to take out.

Attaching the basket
Align the rails and slide in.

• The shape and colour of the illustrations in this manual may differ from the actual appliance. Please refer to the actual dishwasher.

Control panel

Display
Salt, Delay Start, Dry, 0.5h, 1h, Air, Sanitize, Speedy, Basic, Intense, Program, Start/Pause, Power

- Power button**
• After the power is turned on, by default it is automatically set to the program of the last operation (except if the last program was "Dry Only")
- Program button**
• In selecting the wash program, each time you press the button, you can switch the wash mode. The display indicators will light up in turn to show the corresponding mode. (page EN10)
- Dry button**
• Each time you press it, you can switch the drying mode, and the display indicators will light up in turn to show the corresponding mode (page EN11).
- Delay Start button**
• Press this button, the program will start to operate automatically 4 hours later, and the indicator "4 hours" will light up.
• Press the button again, it will cancel the Delay Start setting. The "4 hours" display indicator will light off.
- Start/Pause button**
• Press this button to start operation. If you press this button during operation, the operation will pause. Press it again, the operation will continue.
• If you do not press this button after the above steps, the power will be turned off automatically after 10 minutes.
• If the door is not closed, pressing this button will not start the operation.
- Salt**
• If the dishwasher salt is not adequate, the display indicator "Salt" will light up.
→ There is no need to add salt in Hong Kong. Please set it to option 0. "Salt" indication disappears. (Page EN9)

Accessories

- Supply hose (1)
- Drain hose (1)
- Supply hose connector (1)
- Gasket (1)
- Clamp (1)
- Sucker (1)

Reminder

- A box of dishwasher detergent (sample) for trial use is included.
- Please refer to Installation Instructions (page EN19).

English

Confirmation and Preparation before Use

CAUTION

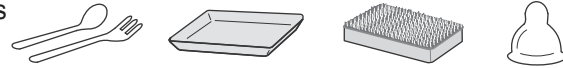
Avoid tempered glasses
(which may scatter when broken, resulting in injuries)



Items that are not suitable for the dishwasher.

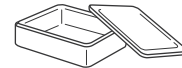
■ Avoid light-weight items that may easily be blown off. (It may cause damage, smoke, burns and odour.)

- Plastic spoons and lid
- Sponges and dishwashing cloths
- Styrofoam containers
- Baby bottle nipples



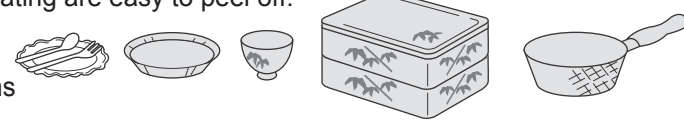
■ Avoid non-heat proof items (that are easy to be deformed by heat).

- Plastic items with a heat resistance of 90 °C or less (including items without a heat-proof label).



■ Avoid items that are easy to discolour or its coating are easy to peel off.

- Silver, aluminum, copper, iron items
- Wooden (bamboo, rattan) items
- Lacquered, gilded, or overglaze-painted items
- Fluorine processing pans



■ Avoid fragile items

- Cracked, broken items
- Crackle glaze dinnerware (tableware with crack pattern)
- Crystal glass, tempered carved glass
- Pans with a wooden handle



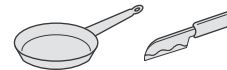
■ Avoid items with narrow mouth, the inside of which cannot be washed.

- Bottles and decanters



■ Avoid items that are easy to get rusted.

- Iron frying pans, knives



● Other items that are not mentioned above or which you are not sure whether they should be washed in the dishwasher, please refer to the instructions on the dishwasher detergent or contact the dealer.

Preparation

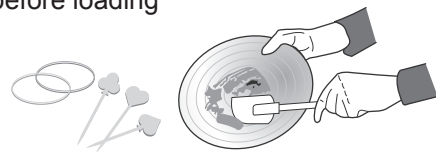
Burns and scorches

Utensils with roasted food or steamed eggs, stubborn stains on burnt pans that are difficult to clean
→ Soak and clean up before loading



Food residues

Fine residue such as seasonings, spices or sesame seeds may re-deposit
Toothpicks, fish bones or rubber bands may cause valve failure
Fish skin may cause odour
→ Remove food residues and foreign objects before loading



Tough soils

May re-deposit
→ Hand wash in advance



■ The following stains may not be completely removed

- Accumulated tea rust
- Lipstick stains (depends on the types)
- Plastic tableware stained with food colours

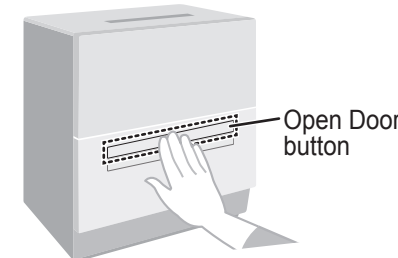
■ If the items are stained with food colours (such as ketchup or curry), the pigment may adhere to the inside of the dishwasher. Remove before loading.

Quick Start Guide

- ## 1 Preparation
- Confirm the installation (pages EN19 - EN24) and the placement of the filters (page EN13) are correct
 - Confirm the utensils are suitable for cleaning by the dishwasher (page EN5)

2 Loading the dishwasher (pages EN6 - EN8)

- ### 1 To open the door,
- 1 press the Open Door button,
 - 2 open the door

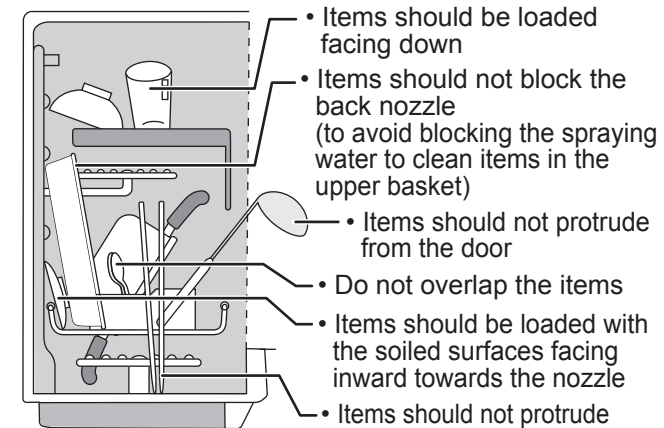


■ To close the door
Press the upper central part of the door above the Open Door button to close the door until the left and right door latches are set firmly.

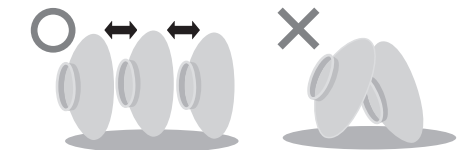


2 Loading the dishwasher

Placing items improperly may result in the door not being able to open and close, causing steam leakage, water leakage, and damage and deformation of the dishwasher and utensils, or affecting the cleaning result. Therefore, please observe the following instructions.



■ Avoid overlapping the items



■ Tilt the items if they have a concave bottom to reduce residual water.



■ The soiled surfaces should face inward towards the nozzles.



3 Adding detergent (page EN9)

- Use only dishwasher detergent. Read carefully and follow the instructions on the dishwasher detergent.

4 Washing and Drying (pages EN10 - EN11)

- Select the program as needed, and press Start/Pause to start the operation.
- If you have to open the door during operation (for example, to load more items), you must press Start/Pause and open the door slowly. (Otherwise, washing water may spill out.)
- If you open the door without pressing Start/Pause during operation, the operation will stop.
→ Close the door and the operation will re-start.

5 Operation completed

- Six beep sounds end the operation.
- Take out the items after 30 minutes from the completion of the operation. (When the operation is completed, the temperature inside the dishwasher is still very high and it is easy to get burnt.)
- Cleaning the filter (page EN13)

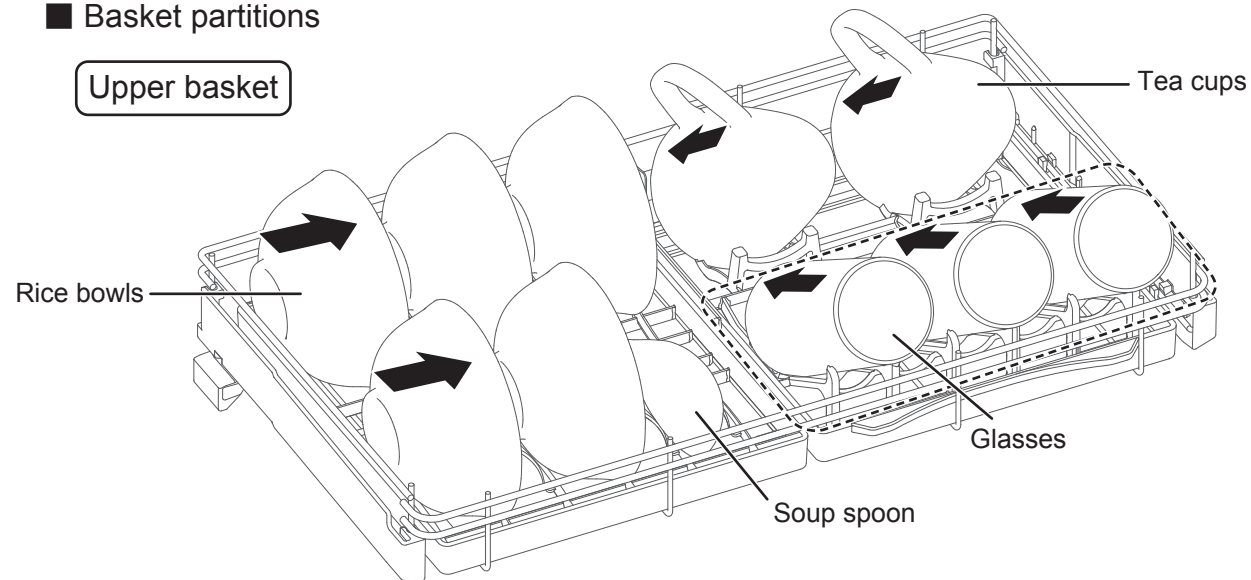
Instructions for Use

Loading the Dishwasher

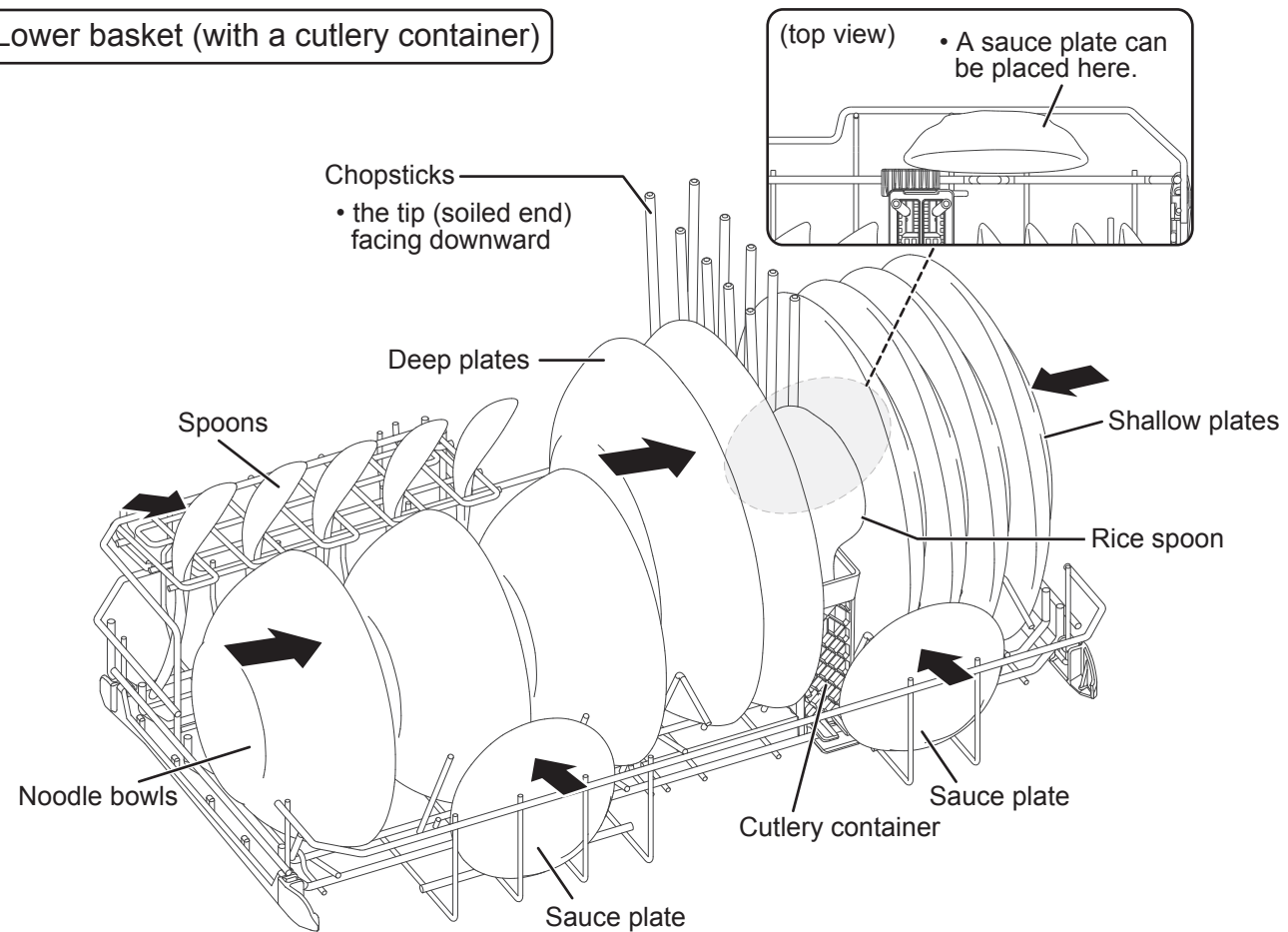
- Items should be loaded with the soiled surfaces facing the nozzles (see ➡) for effective water spraying so as to achieve satisfactory washing result.

■ Basket partitions

Upper basket



Lower basket (with a cutlery container)

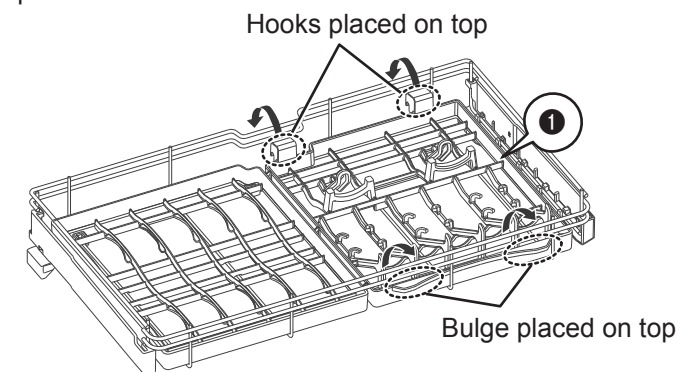


■ Adjusting the baskets

There are movable racks in the upper and lower baskets of the dishwasher (a total of 4 movable racks) for placing larger items.

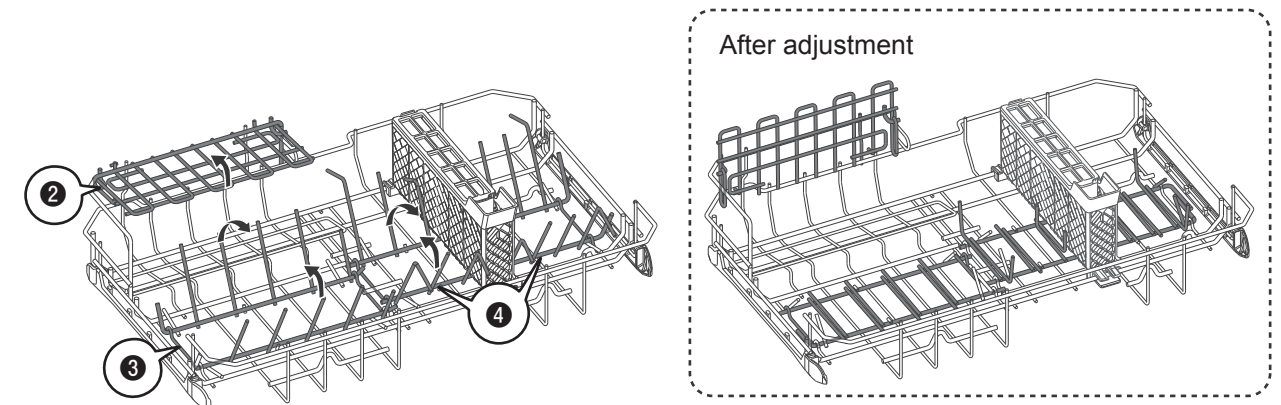
Upper basket movable rack (1)

If long items such as chopsticks in the lower basket touch the upper basket, the resin rack of the upper basket can be raised up.



Lower basket movable racks (2, 3, 4)

To put in larger items such as pans, the rack for holding soup spoons can be raised up, or the racks for placing the noodle bowls and deep plates can be laid flat.



Reminder

- The sizes of items that the dishwasher can accommodate are as follows:
 - [Upper basket] Glasses: height 160 mm or less
 - [Upper basket] Tea cups: height 120 mm or less
 - [Upper basket] Soup spoon: length 250 mm or less
 - [Lower basket] Sauce plates: diameter 180 mm or less
 - [Lower basket] Deep plates, shallow plates: diameter 230 mm or less; if the movable rack (1) of the upper basket is raised up, then 270 mm or less
 - [Lower basket] Items in cutlery container: height 330 mm or less
- (If there are many chopsticks, remove the top grid of the cutlery container (page EN3) to put in more items)

Instructions for Use

Adding Detergent and Washing

Water Softening System

1 For Hong Kong, set the option code "0".

If using the dishwasher in an area of high water hardness level, whitish staining may leave on the utensils and baskets. The dishwasher can be programmed according to the level of water hardness. By adding dishwasher salt, the water will be softened to reduce its hardness to achieve a better cleaning result.

- Make the following settings to avoid consuming more dishwasher salt and water and having a poor cleaning result.

■ Area setting (while power is turned off)

Confirm power is turned off

- 1 Press **Delay Start** and **Start/Pause** for 2.5 seconds simultaneously. After 2 beep sounds, start setting.
- 2 Press **Delay Start**, select the function code "Air".
- 3 Press **Program** and select the corresponding option code according to the water hardness level.
- 4 Press **Start/Pause** to save the setting. Six beep sounds complete the setting.

Function code (press Delay Start)	Option code (water hardness) (press Program)	Display indicator (lights up)
Air	0	100 [mg/L] or less
	1	100 - 200 [mg/L]
	2	200 - 300 [mg/L]
	3	300 - 400 [mg/L]
	4	400 - 500 [mg/L]

* The above are factory set.

For Hong Kong with option code "0", there is no need to add salt. Please skip this step and move to the next step (Adding Detergent).

■ Adding dishwasher salt (while power is off)

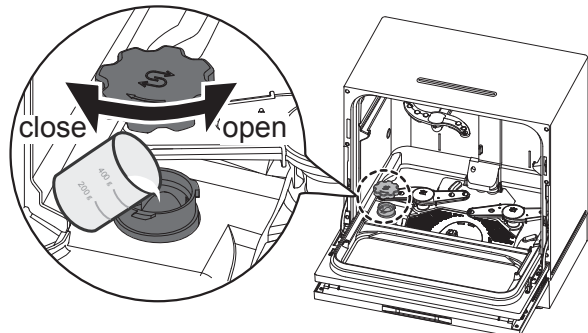
Confirm power is turned off

Remove the lower basket, unscrew the lid, and carefully pour in the dishwasher salt (about 400 g). Then, tighten the cover.

- When using for the first time, fill in water (about 200 g) fully after adding the salt. Stir well until it dissolves.

Reminder

- When adding the salt, use a scale to weigh it and pour in with a measuring cup. If you accidentally spill the salt, wipe off the salt on the dispenser (to prevent the salt rubbing against the lid, hence reducing the tightness).
- When using for the first time or when the "Salt" indicator lights up, please add the dishwasher salt (do not use edible salt), and read carefully and follow the instructions on the dishwasher salt.
- If you use all-in-one dishwasher detergent which contains dishwasher salt, and the water hardness is less than 300 mg/L, you don't need to use the dishwasher salt. However, if water hardness is over 300 mg/L, you still need to add dishwasher salt.



Adding Detergent

2 Adding dishwasher detergent

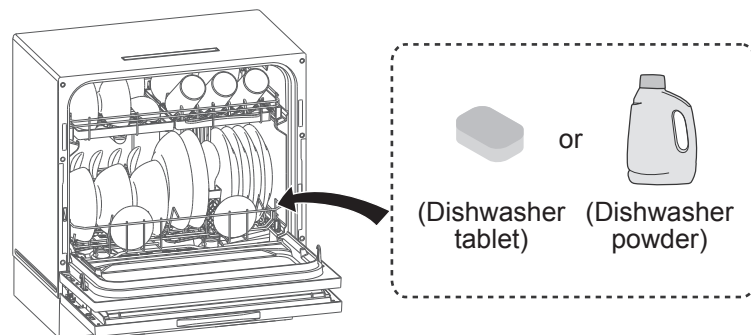
Add into the dishwasher according to the instructions on the dishwasher detergent.

The standard amount for each washing (for reference only)

- Dishwasher tablet : 1 tab (about 10 g)
- Dishwasher powder : 21 g

Reminder

- Please read carefully and follow the precautions and instructions on the dishwasher detergent.



Select functions

3 Press **Power** to turn on the power

- After all indicators in the display blink once, only the indicator of the last operation will light up (and the other indicators will light off) (except if the last operation was "Dry Only").
- If all indicators in the display keep lighted up, close the door and turn the power on again.

4 Press **Program** to select a program

- Each time you press the Program button, you can switch the mode shown in the chart below, and the indicators in the display will light up in turn.
- When an indicator lights up, the mode of the previous operation is set by default (except if the last operation was "Dry Only") (Mode ① is factory set).

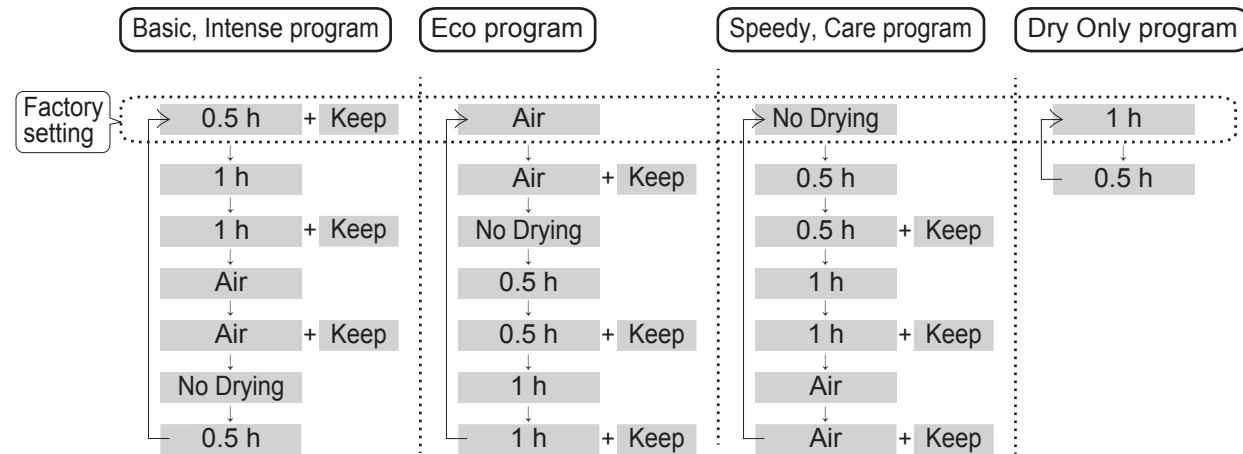
Serial No.	Main program	Additional mode	Main drying function	Additional drying mode	Operation process and operation time (approx.)
①	Basic	-	0.5 h	Keep	Wash (31 minutes) → Rinse 3 times (35 minutes, 70 °C) → Dry (30 minutes) → Keep (2 hours)
②	Basic	Sanitize	0.5 h	Keep	Wash (31 minutes) → Rinse 3 times (43-53 minutes, maximum temperature up to 80 °C) → Dry (30 minutes) → Keep (2 hours)
③	Intense	-	0.5 h	Keep	Wash (60 minutes) → Rinse 3 times (40 minutes, 70 °C) → Dry (30 minutes) → Keep (2 hours)
④	Intense	Sanitize	0.5 h	Keep	Wash (60 minutes) → Rinse 3 times (48 - 58 minutes, maximum temperature up to 80 °C) → Dry (30 minutes) → Keep (2 hours)
⑤	Eco	-	Air	-	Wash (31 minutes) → Rinse 3 times (73 minutes, 60 °C) → Air (240 minutes)
⑥	Eco	Sanitize	Air	-	Wash (31 minutes) → Rinse 3 times (81 - 91 minutes, maximum temperature up to 80 °C) → Air (240 minutes)
⑦	Care	-	-	-	Wash (108 minutes) → Rinse 3 times (26 minutes, 60 °C)
⑧	Care	Sanitize	-	-	Wash (108 minutes) → Rinse 3 times (34 - 44 minutes, maximum temperature up to 80 °C)
⑨	Dry Only	-	1 h	-	Dry (60 minutes)
⑩	Speedy	-	-	-	Wash (17 minutes) → Rinse 2 times (18 minutes, 60 °C)
⑪	Speedy	Sanitize	-	-	Wash (17 minutes) → Rinse 2 times (26 - 36 minutes, maximum temperature up to 80 °C)

Reminder

- ① and ② are suitable for washing immediately after the meal. ③ and ④ are suitable for washing several hours after the meal or when the items are heavily soiled. ⑤ and ⑥ are suitable for washing immediately after the meal, when there are less items to wash or when water-saving and energy-saving are in mind. ⑦ and ⑧ are for cleaning and maintenance of the inside of the dishwasher. ⑨ is applicable for drying after hand wash, or using as a dish warmer. ⑩ and ⑪ are best when the items are slightly or lightly soiled.
- Basic, Intense, Care, Eco, Speedy programs (i.e. except Dry) can supplement or cancel the Keep setting. When Keep is set, air will be intermittently blowing for about 2 hours.
- The Sanitize mode can be combined with other programs (except Dry). The maximum water temperature during rinsing can be changed to 80 °C, hence achieving better cleaning result.
- The operating times in the above chart are measured at room temperature 20 °C, supply water temperature 15 °C, and water pressure 0.24 MPa. The actual operating time depends on room temperature, water temperature, water pressure, and the location of the items loaded and so on.
- During the operation, the indicator of the relevant mode will keep light on and off, indicating that operation is in progress.

5 Press and select drying

- When you want to adjust the drying function included in the previous program, you can do so by pressing the Dry button. Each time you press, you can switch the drying mode according to the chart below. The display indicators will light on in turn.



Reminder

- After adjusting the drying mode, the overall operating time will also change.
- When No Drying is selected, air blowing will continue for about 3 minutes (about 30 minutes if dishwasher salt is added), which is normal. (This is to discharge some of the hot air to avoid burns.)

6 Press to start

- Drying starts according to the selected program, and ends with 6 beep sounds.
- If you do not press this button after the above steps, power will be automatically turned off after 10 minutes.

Caution


- Take out the items after 30 minutes from the end of operation (to avoid burns).
- Clean the filter after each operation. (page EN13)

Delay Start program


You can preset to start the operation 4 hours later by the following procedure.

After step 5 in pages EN9 - EN11,

Press , the indicator for **4 hours** in the display will light up,

→ press 
Start/Pause
(operation will start 4 hours later)

Reminder

- You cannot use the Delay Start function in Dry Only, Speedy, Speedy + Sanitize programs.
- If you want to cancel Delay Start, press , the indicator "4 hours" will light off.

Changing the settings

Various settings can be changed according to your preference or actual situation.

Enhanced washing settings

If you want to enhance the washing performance by extending the washing time, change the settings as follows.

Confirm power is turned off

- Press **Delay Start** and **Start/Pause** for 2.5 seconds simultaneously. Start setting after 2 beep sounds.
- Press **Delay Start**, and select function code "1 h".
- Press **Program** again and select the option code as needed (whether to enhance washing).
- Press **Start/Pause** to save the setting and 6 beep sounds complete the setting.

Function code (press Delay Start)	Option code (whether to enhance washing) (press Program)	Display indicator (lights up)
1 h	0	No need
	1	Enhanced

Enhanced drying settings

If you want to enhance the drying performance by extending the drying time, change the settings as follows.

Confirm power is turn off

- Press **Delay Start** and **Start/Pause** for 2.5 seconds simultaneously. Start setting after 2 beep sounds.
- Press **Delay Start** and select the function code "Air + 1 h".
- Press **Program** again and select the option code as needed (whether to enhance drying).
- Press **Start/Pause** to save the setting and 6 beep sounds complete the setting.

Function code (press Delay Start)	Option code (whether to enhance drying) (press Program)	Display indicator (lights up)
Air + 1 h	0	No need
	1	Enhanced

Disable the buzzer setting after operation

If you want to disable the buzzer at the completion of the dishwashing, make the changes as follows.

Confirm power is turn off

- Press **Delay Start** and **Start/Pause** for 2.5 seconds simultaneously. Start setting after 2 beep sounds.
- Press **Delay Start** and select the function code "0.5 h".
- Press **Program** again and select the option code as needed (whether to disable the buzzer for operation completion).
- Press **Start/Pause** to save the setting and 6 beep sounds complete the setting.

Function code (press Delay Start)	Option code (whether to enable or disable the buzzer for operation completion) (press Program)	Display indicator (lights up)
0.5 h	0	Disable
	1	Enable

* Indicates that the operation mode is factory set.

Maintenance



- Take out the utensils, clean the food filter, and carry out maintenance after 30 minutes from operation completion (to avoid burns)
- Be sure to turn off the power before carrying out maintenance.

- Do not fill in water by hand when performing maintenance (to avoid water leakage, damage or error alarm). (If after-sales service such as repair is required as a result of manual water injection, it will not be covered by the free warranty even within the warranty period.)
- Do not use bleach, detergent, thinner, benzene, cleanser, wax or pesticide (as it may cause damage or discoloration.)
- When using a chemical wipe cloth, please follow the instructions on the product.

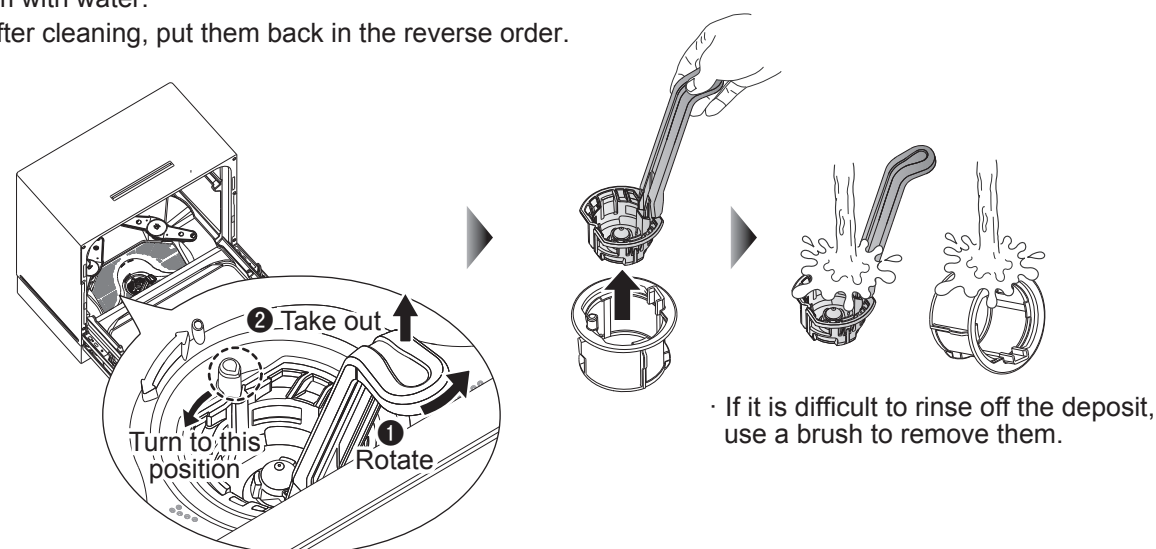
Every time

Clean the filter

Take out the basket and then the filter.

As shown in the illustration, take out the food filter from the dishwasher, disassemble the filter and rinse them with water.

- After cleaning, put them back in the reverse order.

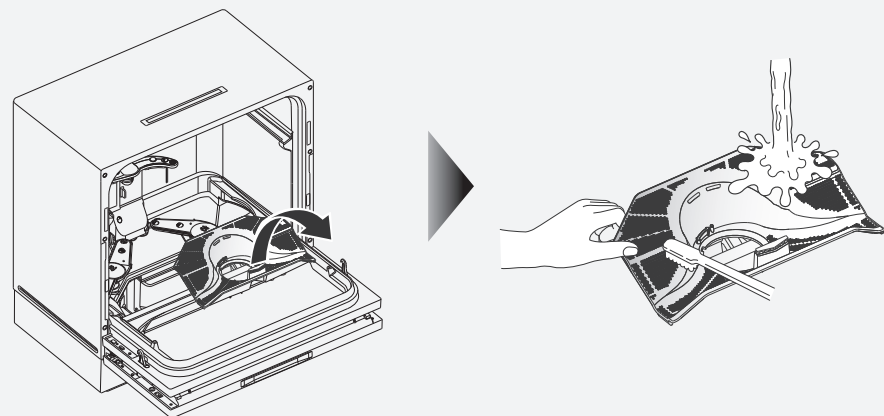


Once a month

Cleaning the drain filter ...

Clean the drain filter once a month, or when you are particularly concerned about dirt deposited on the drain filter. (You have to take out the baskets first as described above before taking out the drain filter)

- When the filter is removed, there will be water left at the bottom, which is normal.
- After cleaning, please put it back.



Reminder

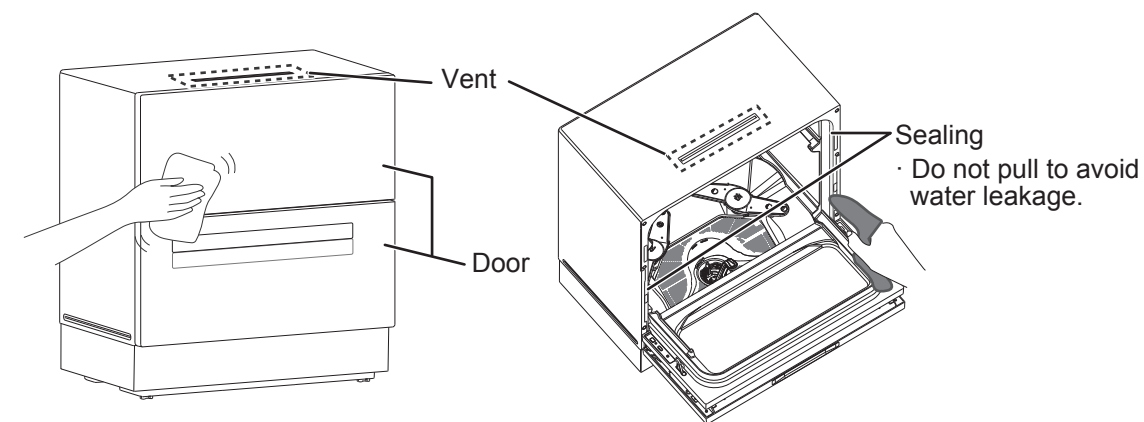
- If the filters are clogged, the cleaning performance may deteriorate, or the filters may become mouldy, cause odour or water leakage.

Once a month

Clean the door, vent, sealing, inside of the dishwasher

Wipe the door, vent and sealing with a damp soft cloth

- Dirt is easy to accumulate at the edge sealing and vent of the dishwasher. Please clean carefully.
- Pull out the baskets and wipe off the dirt on the inside walls of the dishwasher.



2~3 times each month

Cleaning the inside of the dishwasher (Care program)

Select the Care program to clean the internal body

Do not put in any items when performing the Care program.

- 1 Add the dishwasher detergent (about 2 times of the standard amount)
- 2 Press to turn on the power
- 3 Press to select Care
- 4 Press to start cleaning the dishwasher

Reminder

- During the operation, it will pause 2 times (about 30 minutes apart) (so that the high temperature steam will float up the dirt)
- The spraying water may not be able to reach the door edge sealing → Please wipe by hand
- Colored soils such as ketchup and curry are difficult to clean → Please rinse those utensils before loading
- The detergent in the 1 step can be replaced by a dishwasher cleaner sold in the market. Please follow the instructions on the product when using it.

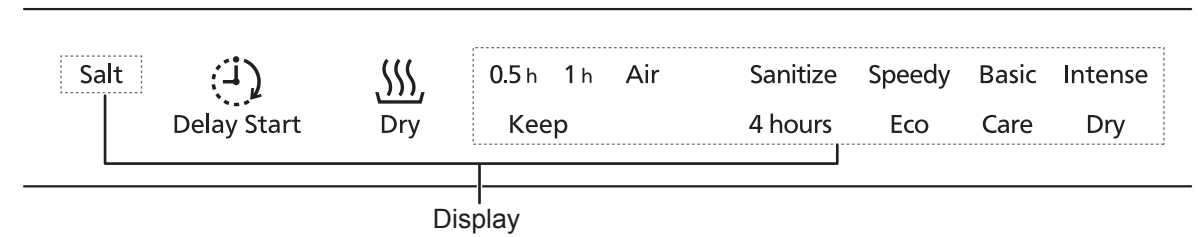
Frequently Asked Questions

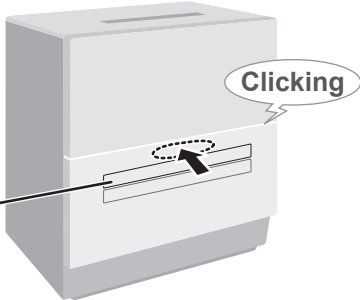
■ If the following situations occur while using the dishwasher, please check and handle as follows.

Symptoms	Check the causes and solutions
Cleaning performance is not satisfactory	<ul style="list-style-type: none"> Did you add detergent or did you use a non-dishwasher detergent? → Please add an appropriate amount of dishwasher detergent (page EN9) Did the cutlery touch the nozzles, so that the nozzles did not rotate, hence affecting the cleaning performance? Were the items placed properly (Did the items overlap or face the wrong direction)? (pages EN6 - EN8) Were burnt pans scraped and cleaned before loading? (page EN5) Did the water used contain many minerals? → Increase an appropriate amount of dishwasher detergent Were the filters clogged? → Please clean the filters (page EN13) Did you check the water hardness level of your area and then set the area setting? (page EN9)
Powder detergent remains	<ul style="list-style-type: none"> Are the dishwasher powder dampened or are there lumps? → If there are lumps, crush them before use.
Glassware become whitish and opaque	<ul style="list-style-type: none"> Glassware with minor flaws on the surface occasionally become whitish and opaque after being washed with high-temperature water. Were the glasses very greasy? → Please use more dishwasher detergent or select the Intense program.
White spots are left on the glasses.	<ul style="list-style-type: none"> Is the water hardness level in your area high? → If yes, reset the water hardness level suitable for your area (page EN9).
Water droplets are left on the concave bottom of the dishes and the drying result is not satisfactory	<ul style="list-style-type: none"> Water may not be drained completely from the concaves. → Tilt the items slightly (page EN6), or set to Enhanced Drying to extend the drying time so as to reduce the residual water (page EN12).
Items turns yellowish or slightly black	<ul style="list-style-type: none"> This may be caused by tea stains or the iron contained in the water. → Please wipe the dishes often.

Error Indication

■ When the following alerts appear on the display of the dishwasher (and the buzzer sounds out simultaneously), please check and resolve as follows. If the problem cannot be solved, please contact Service Centre. (Press and hold the Program button for more than 5 seconds, the display will show the last error)



Symptoms	Check the causes and solutions
Display Basic and Intense blink simultaneously <ul style="list-style-type: none"> Poor water supply 	Turn off the power before checking the following <ul style="list-style-type: none"> Is the water tap or water supply valve opened? Is there a water supply suspension? Are the water pipes or the supply hose frozen? Is the supply hose connector clogged? Do you use well water? (Impurities in the well water may cause malfunction.)
Display Intense, Speedy and Care blink simultaneously <ul style="list-style-type: none"> Poor water drainage 	Turn off the power before checking the following <ul style="list-style-type: none"> Is the filter clogged? (page EN13) After confirming, turn on the power, select Dry to run, and turn off the power after draining. If you still have problems after the above procedures, please contact Service Centre.
Display All indicators light up <ul style="list-style-type: none"> The door is open or is not closed properly 	Hold the central position above the Open Door button and push until the latches on left and right sides of the door are firmly set. (page EN6) 
"Speedy", "Intense", "Keep" are blinking <ul style="list-style-type: none"> There may be excessive foam. There may be water leakage. 	Close the water tap first. Then unplug the power cord from the outlet and leave the door closed. After about 30 minutes, plug in the power plug, turn on the power, and check the display. <ul style="list-style-type: none"> When "Speedy" "Intense" "Keep" disappear, open the water tap and restart the operation. When "Speedy" "Intense" "Keep" are still blinking, contact the Service Centre.

If the problem cannot be solved after checking the above, or other problems not mentioned above occur, please unplug the power socket, turn off the water tap, and contact the Service Centre.

Error Indication (cont.)

Freezing prevention Not in use for a long time

In the event of freezing occurs and the problem is ignored, it may cause damage to the supply valve and piping. For draining treatment and freezing prevention, please contact Service Centre.

Panasonic staff handling the draining should note the following:

- If the relevant parts or pipes were already frozen, please do the following
 - ① Select Speedy to run 1 - 2 times to defrost. (If the situation is serious, repeat the operation several times)
 - ② After the process is completed, wait for 30 minutes, remove the supply hose from the dishwasher, and drain out the water from the hose.
 - ③ Take off the rubber cover (black) at the front, shake the dishwasher on all sides, and drain out all the water inside.
 - ④ Put the rubber cover back in place.

Troubleshooting

■ Check the following first. If the problem still continues or there are other symptoms, please contact Service Centre.

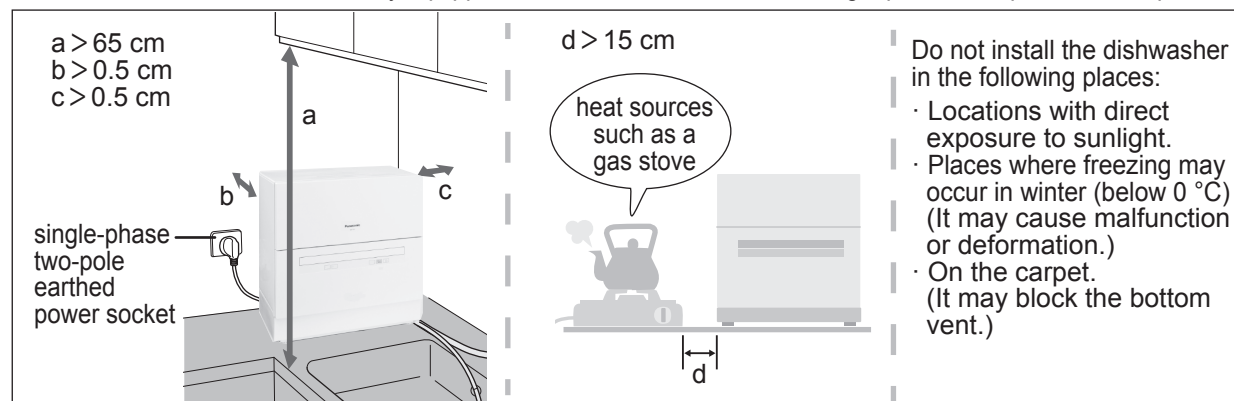
		Symptoms	Causes and Solutions
Dishwasher Body		The appliance does not work	<ul style="list-style-type: none"> ● Is the door closed firmly? → Close the door firmly and restart the operation.
		Water is supplied and drained repeatedly	<ul style="list-style-type: none"> ● Have you used kitchen detergents? Or is kitchen detergent not rinsed off completely from the items in the pre-wash? → You must use dishwasher detergent. (Kitchen detergent may generate excessive foam. Supplying and draining water repeatedly is necessary to eliminate the foam. The operation time will be prolonged. Do not open the door during the process to avoid water leakage.)
		Dew condensation around the door.	<ul style="list-style-type: none"> ● Dew condensation may occur due to the temperature difference between the dishwasher body and the kitchen, which is not a malfunction.
		Steam comes out from around the door during operation.	<ul style="list-style-type: none"> ● Steam or warm air may come out, but this is not a malfunction.
		After using for a while, the inside walls of the dishwasher become whitish.	<ul style="list-style-type: none"> ● This is caused by the minerals contained in the water.
		Water is left under the filter	<ul style="list-style-type: none"> ● Water may be left at the bottom. This is normal.
		Water supply does not stop	<ul style="list-style-type: none"> ● The water supply valve may be broken. Close the water supply valve or the water tap valve (but leave the power plug connected), and contact Service Centre.
Smell		Odour emits during operation	<ul style="list-style-type: none"> ● For a while after it is purchased, the rubber and resin components of the dishwasher may emit some odour, which have no adverse effect on the human body and will disappear after a period of time.
		Smell like a sewer	<ul style="list-style-type: none"> ● A foul odour may be generated as a result of the deterioration of water remained in the appliance if it is left unused for a long time. → Select and run the Care program.
		Fishy smell	<ul style="list-style-type: none"> ● This is due to residue such as fish skin left on the filter. → Remove and clean it using a brush (page EN13). If the smell persists, select and run the Care program.
Abnormal sound		When the nozzles start spraying, they make a clattering sound	<ul style="list-style-type: none"> ● This is the sound of the nozzles switching sequentially before spraying, which is not a malfunction.
		Noises change during operation	<ul style="list-style-type: none"> ● Depending on the types of tableware and how they are loaded, the noises may get louder during operation. ● Are the filters clogged? (When the filters are clogged, the sound of the pump may suddenly become loud during operation.) → Clean the filters (page EN13) ● During operation, the electronic components will make chattering sounds when they are switched. This is not a malfunction.
Others		Freezing	<ul style="list-style-type: none"> ● ① Select and run the Speedy program 1 - 2 times (to defrost). ● ② Check whether you can run the Speedy program. ● If the freezing is the result of being left unused for a long period of time, defrost may not work even after running the Speedy program 1 - 2 times. → Contact Service Centre (page EN17)
		Water leakage	<ul style="list-style-type: none"> ● Is the dishwasher (location, drain hose, supply hose) installed correctly? → Check carefully (page EN24)
		Water supply stops	<ul style="list-style-type: none"> ● Turn off the power to stop the operation. When water supply resumes, discharge the muddy water from another tap, and then restart the operation.
		Power cut	<ul style="list-style-type: none"> ● When electricity supply resumes, press Start/Pause to restart the operation. ● The program will resume from the beginning of the process which was running at the time of the power cut. ● If delay start was selected and was waiting to start later, the selected program with delay start will be cancelled.
		Circuit breaker has tripped	<ul style="list-style-type: none"> ● Check the causes, reset the circuit breaker, press Start/Pause to restart the operation. ● The program will resume from the beginning of the process which was running at the time of the power cut. ● If delay start was selected and was waiting to start later, the selected program with delay start will be cancelled.
		"Salt" stays lighted up in the display	<ul style="list-style-type: none"> ● For Hong Kong with option code "0", there is no need to add salt. (page EN9)

Installation Instructions

- Panasonic Corporation shall not be held responsible for any accidents, damage or injuries that may occur as a result of failure to follow the Installation Instructions in the setup, trial operation or inspection of this appliance.
- After the installation is completed, you must carry out trial operation and inspection before using it.
- Do not use old water supply hose or drain hose in order to avoid water leakage.
- The dishwasher was factory tested with water filled in. When unpacking, there may be residual water. This is not abnormal.
- Please enquire your local water supplies authority or water works professionals to check the water pressure and flow rate of the tap water.
 - The applicable inflow water pressure for this appliance is 0.05 MPa - 1 MPa (When the water pressure is low, the operating time may be prolonged)
 - Flow rate: When the water tap is open fully, the rate of inflow is required to reach 8 liters per minute or more (When the flow rate is low, the operating time may be prolonged or abnormality may occur)
 - When operating the water tap, be sure to install the specified pressure relief valve if the tap water pipe generates abnormal sounds (water hammer phenomenon)

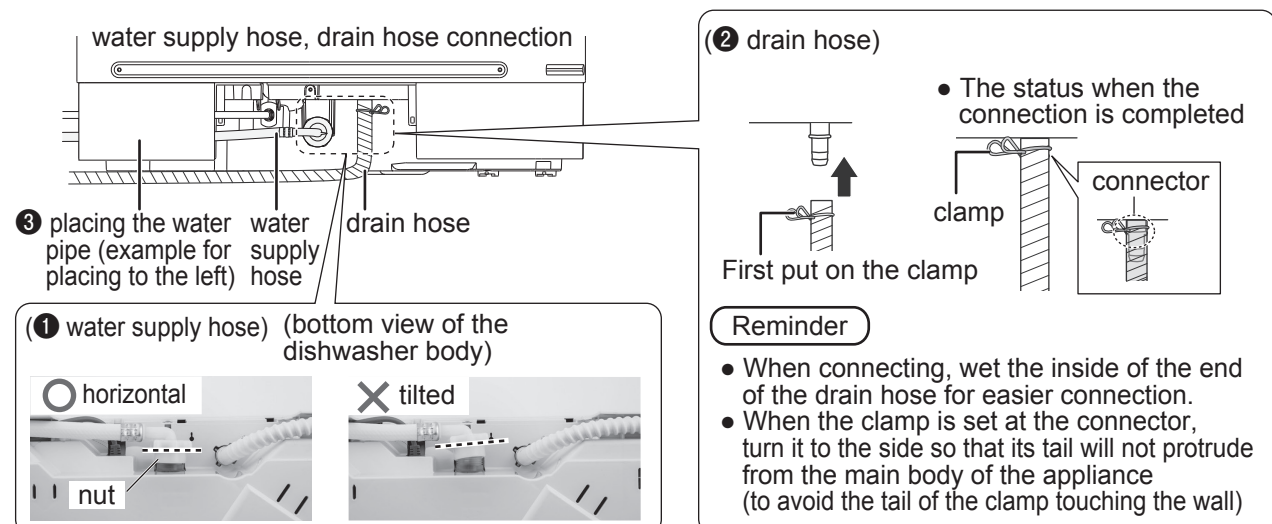
1 Confirm the installation position

- The dishwasher should be installed in an open space. (Make sure to leave a space clearance of a > 65 cm, b > 0.5 cm, c > 0.5 cm, d > 15 cm or more)
- Place the dishwasher on a solid horizontal surface.
- The location should be exclusively equipped with a rated 10 A, AC 220 V single-phase, two-pole, earthed power socket.



2 Connect the water supply hose and drain hose to the dishwasher body

- 1 Insert the water supply hose into the body as shown and tighten the nut. (Keep the nut in a horizontal position to avoid water leakage)
- 2 Insert the drain hose into the body as shown, and tighten the clamp. (The clamp needs to catch the port of the drain hose and the connector of the body to avoid water leakage)
- 3 Place the water supply hose and drain hose to the right or left, depending on the position of the water tap and drain pipe.



3 Install the water supply hose connector

- Please add a new water tap for connection. Be sure to install the supply pipe accessories at the port of the transverse water tap.
- Install the supply hose connector to the water tap according to the installation instructions.

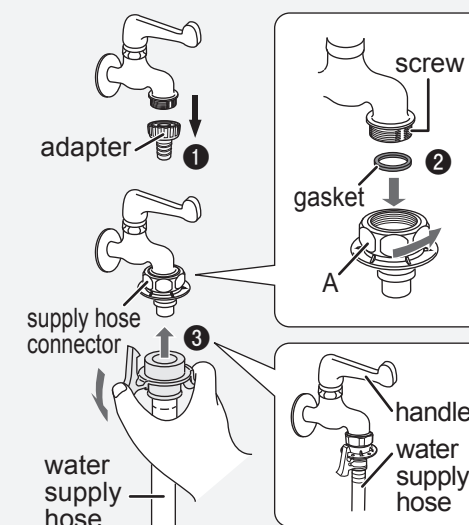
Tap type	Before installation	Add the water tap and the supply hose connector • supply hose connector	After installation
Combined tap			
Transverse water tap			

Important

- Do not install the supply hose connector to the ports other than the port of the transverse water tap.

CAUTION

- Fasten A of the supply hose connector (otherwise it may cause water leakage)



To connect the water supply hose

- 1 Loosen screws on the adapter and take down the adapter.

- 2 Fix the supply hose connector, with the gasket, to the water tap.

Note

- After installation, make sure the fixing screws are tight.

Note

- If the fixing screws are too tight, it may cause damage of gasket and lead to water leakage.

- 3 Connect the water supply hose

Please confirm the other end of the water supply hose has been connected to the joint of the dishwasher before conducting the following operations:

- 1) Connect the water supply hose and supply hose connector.
- 2) Turn on the handle of the water tap after connecting the water supply hose.
- 3) Please confirm carefully whether there is water leakage at the water tap and each connecting point after the installation is completed.
- 4) New hose-sets supplied with the appliance are to be used and old hose-sets should not be reused.

Confirming the setup when the appliance is connecting with a water heater

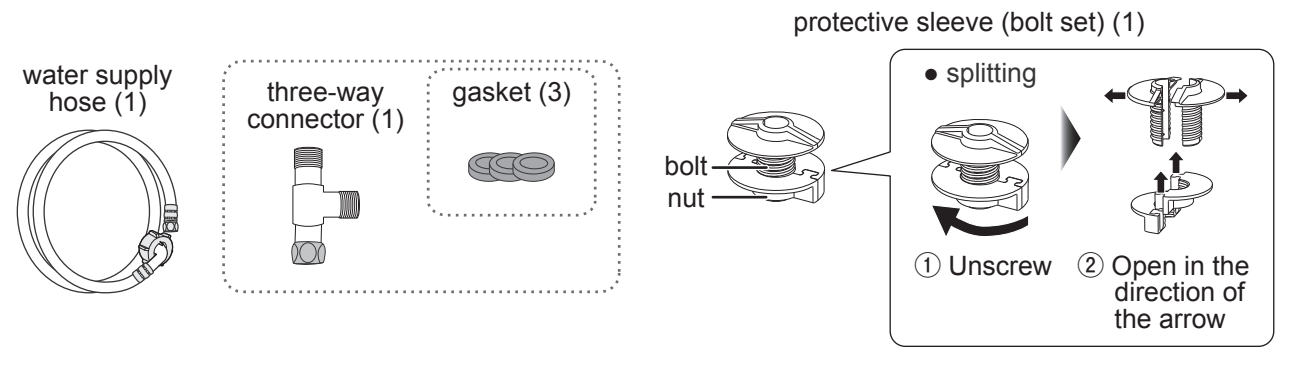
- To supply hot water, connect a front type water heater which generates a hot water yield of at least 10 L per minute. Regardless of the hot water supply capacity, do not connect a rear type water heater.
- When using a water heater, set the temperature of the supplied hot water below 60 °C. (It may cause unsatisfactory cleaning results.)
- For high temperature water heater (60 °C above) of which the temperature of supplied hot water cannot be set, connection is prohibited.
- To re-connect a water heater, please contact the Service Centre. (Especially in areas where water pressure is high, be sure to install the specified pressure relief valve at the water heater.)

Installation Instructions (cont.)

● Another installation (under the kitchen counter connection)

The following optional accessories are required, which can be purchased at the dealer.

optional accessories

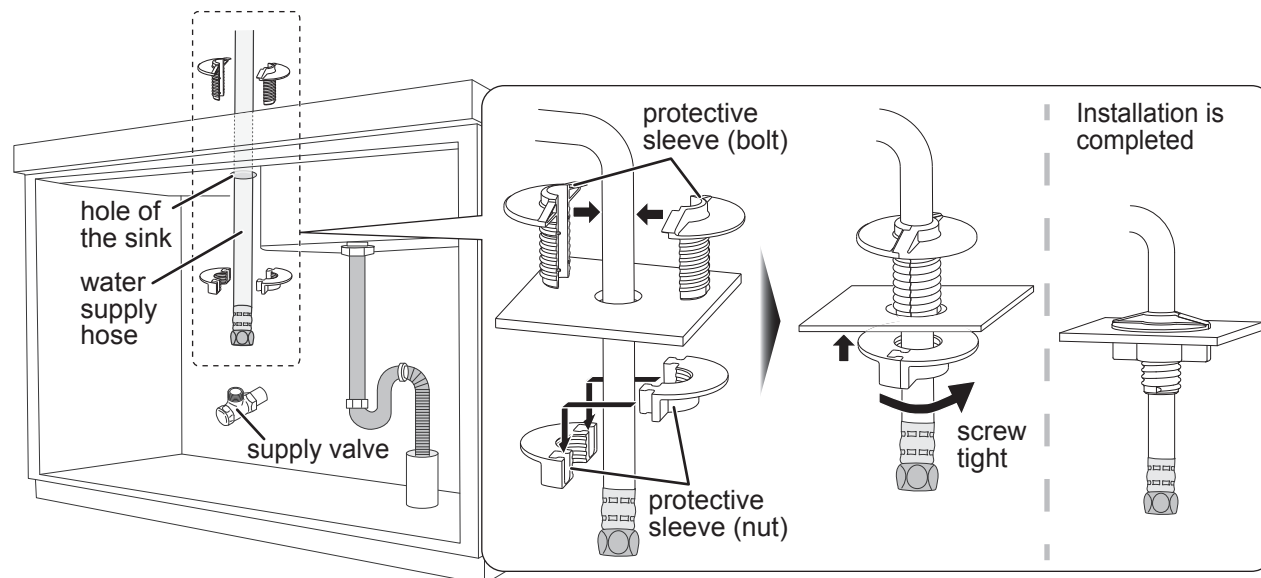


- Important**
- Do not connect the dishwasher to the water heater's water pipe (do not use hot water).
 - The water temperature applicable for the dishwasher is 5 °C to 40 °C.

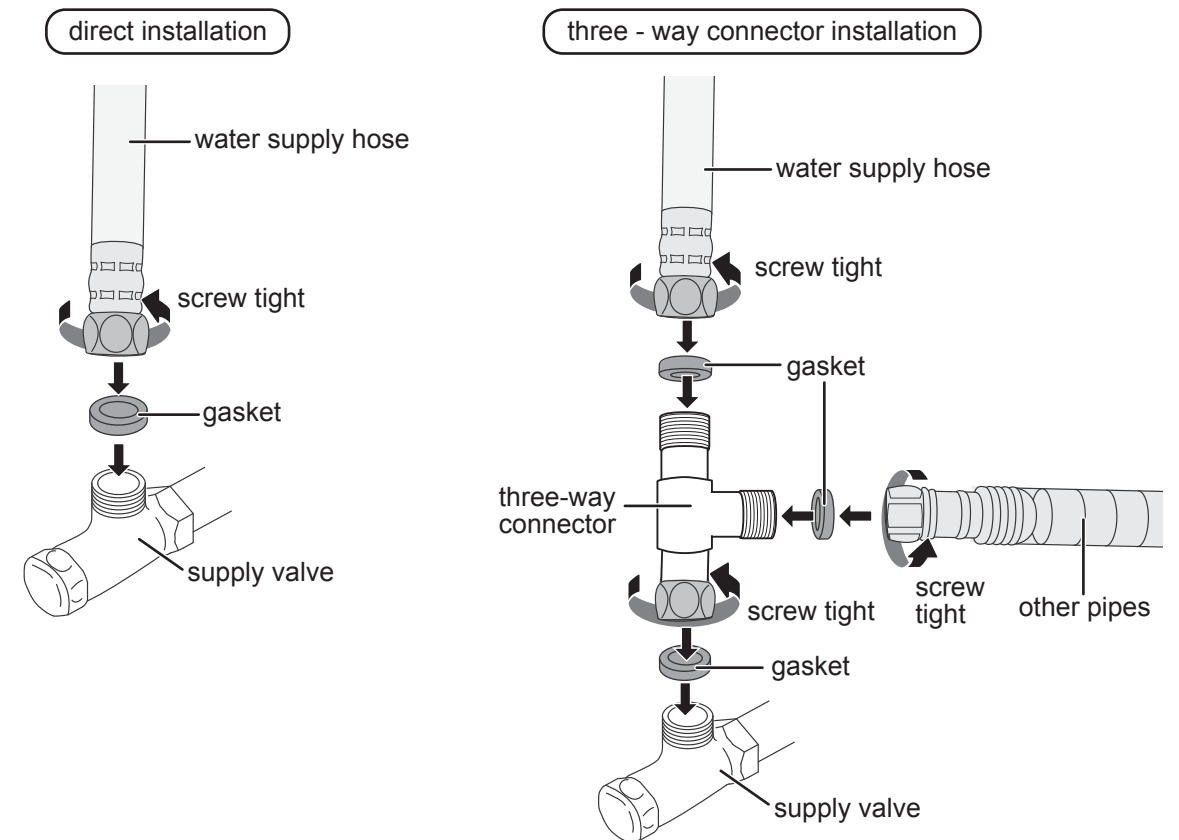
3 Install the water supply hose to the supply valve

Pass the water supply hose through the hole of the sink and fit on the protective sleeve. Depending on the piping arrangement at your home, you may choose to connect directly to the supply valve or connect to the supply valve together with other pipes through a three-way connector.

① protective sleeve



② connect to the supply valve



Important

- Do not miss out the gasket when installing (it may cause water leakage).

Recommendation

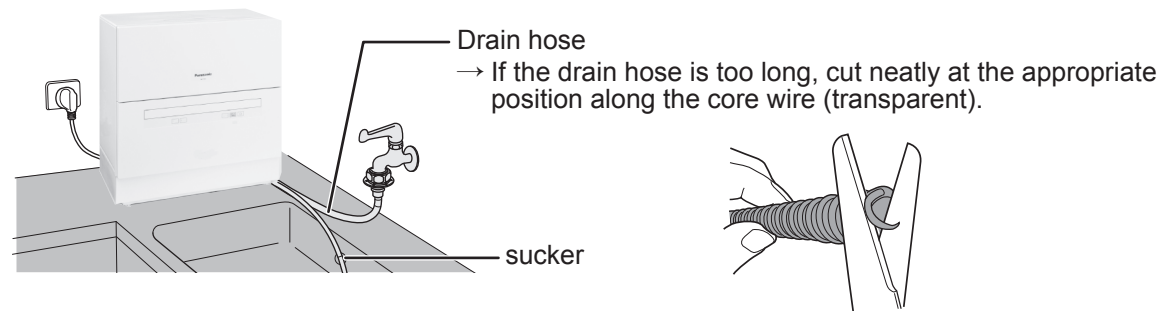
- If it does not affect the usage of other water pipes, it is recommended to close the supply valve after each operation.

■ Confirming the tap water pressure

- Please use the appliance at an inflow water pressure of 0.05 MPa - 1 MPa. When operating the water tap in the kitchen, be sure to install the specified pressure relief valve if the tap water pipe generates abnormal sounds (water hammer phenomenon).
- When the water tap is fully open, the rate of inflow is required to reach at least 8 L per minute.
- Please contact the Service Centre to confirm the water pressure and rate of inflow.

Installation Instructions (cont.)





4 Secure the drain hose with a sucker



5 Trial operation

- Make sure that all adhesive tapes used to fix the door and inside of the dishwasher and the packaging bags of all parts have been removed.
- Make sure that the supply valve is open, plug in the power plug and close the door.
- Please perform a trial test of the dishwasher according to the following procedures.
 - If there is no water supply and electricity supply temporarily, perform a trial test of the dishwasher when water supply and electricity supply resume. (Do not fill in water by hand)

Procedures for trial operation

- 1 Press  to turn on the power
Power
- 2 Press and hold   for more than 3 seconds simultaneously
Dry Program
· The indicators for Speedy and Care in the display light up and emit 2 beep sounds
- 3 Press  to start the trial operation
Start/Pause
· Please confirm the following during and after the operation.
· Power will automatically be turned off and the display indicators light off after completion of the trial operation

Trial operation confirmation

During operation

- Error indication** : There should be no alarm sound nor abnormal indication on the display. (page EN16)
- Water leakage** : There should be no leakage at the joints of the water supply hose and drain hose.

When the operation completed

- After 6 beep sounds, power will be automatically turned off
- Drainage condition** : Open the door and confirm that the water inside the dishwasher has been drained out.
- No water supply condition** : When the power is off, confirm that no water is draining out from the drain outlet.

Reminder

- After the trial operation is completed, keep the supply valve open.
- If the dishwasher will not be used for a long time, close the water valve to avoid water leakage.
- If freezing may occur, arrange draining treatment. (It may cause damage to the supply valve resulting water leakage) → If freezing occurs, contact Service Centre

6 Checkup

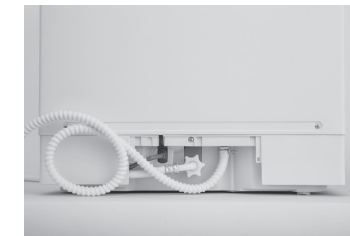
- Please check the following before use.
 - Is the dishwasher installed on a solid horizontal surface? Make sure it won't shake or tilt.
 - Is the water supply hose tightened, steady and straight?
 - Is there no water leakage at the connection between the water supply hose and the back of the dishwasher?
 - Is there no water leakage at the connection between the water supply hose and the supply valve? (If there is water leakage, please check whether the gasket is fitted properly.)
 - Is the drain hose tightened, steady and straight?
 - Is the drain hose bent, entangled, or damaged?
 - Is the drain hose raised 20 cm or more?

(Examples of incorrect drain hose arrangement)

✗ Bent



✗ Entangled



✗ Raised 20 cm



Specifications

MEMO

■ Specifications

Item	Model No.	NP-TH1HK
Power supply		220 V ~ 50 Hz
Power consumption		1170 W
Dimension (Width × Depth × Height)		550 mm × 344 mm × 598 mm
Net weight		20 kg
Water consumption		11.7 L (Eco program)
Tap water pressure		0.05 MPa – 1 MPa
Washing method		Rotary nozzle spray, fixed nozzle spray
Rinsing method		Turbo rinsing, spray rinsing
Drying method		Fan-drying, heat-drying
Program		Basic, Intense, Eco, Care, Dry Only, Speedy, Sanitize, Delay Start (4 hours Later), Dry (0.5 h, 1 h, Air, Keep)
Standard capacity		Total 39 items
		Rice bowl 5 Tea cup 2 Glass 3 Soup spoon 1 Chopsticks 10 Rice spoon 1 Noodle bowl 3 Sauce plate 3 Deep plate 2 Shallow plate 4 Spoons 5

- When the power is turned off, approximately 0.5 W of power is consumed constantly in order to detect water leakage.

■ High temperature sanitization

Testing object	Testing agency	Testing method	Result	Report No.
Dishwasher	China Testing & Inspection Institute for Household Electric Appliances	QB/T 5133-2017	Sanitization rate Escherichia coli ≥ 99.9 % Staphylococcus aureus ≥ 99.9 %	WXw-18-30347

安全注意事項

必須遵守

為防止人身傷害及財產損失，必須遵守以下說明。


■ 按照錯誤操作而產生的危害及損害程度分別說明如下。

警告 表示如不避免，則可能造成死亡或嚴重人身傷害的某種潛在危害情況

注意 表示如不避免，則可能造成輕微或中度人身傷害的某種潛在危害情況

■ 以下圖示說明必須遵守的事項。

 表示「禁止」的事項。

 表示「強制執行」的事項。

■ 為防止火災、燙傷、觸電等...



本產品不宜供肢體、感官或精神上有殘疾或缺乏經驗和知識的人士（包括兒童）使用，必須有監護人從旁監督及指導使用本產品，並且對使用者的安全承擔責任。請預防兒童將本產品當作玩具，以免產生危險。

請勿朝機身潑水或灑水（可能導致火災、觸電）

請勿靠近火源、熱源（可能導致火災）
· 蚊香、香煙、蠟燭、電熱器等

請勿放置於煤氣爐等熱源 15 cm 範圍之內（可能導致火災）

在運作進行中請勿撞擊機身（可能導致觸電、漏電、短路而造成火災）

在運作進行中或操作結束後 30 分鐘內，請勿打開洗碗碟機
（可能因高溫的機身內部、洗滌水、蒸氣等導致燙傷）
→ 請待操作結束 30 分鐘後方可打開機門（取出餐具、清洗保養等）
→ 如中途需要打開機門，必須暫停操作，並小心緩慢打開機門

請勿擅自拆開機器進行修理、改裝（可能引起火災或因異常運作而導致受傷）

請勿錯誤使用電線、插頭（可能導致火災、觸電）

- 請勿損傷電線、插頭；請勿對電線加工、彎曲、扭轉、拉伸；請勿置電線於高溫處，或用重物重壓、捆紮
→ 如有損壞，為免危險，必須由製造商、服務中心或類似部門的專業人員更換
- 請勿用濕手插入、拔出插頭
- 插頭、電線如有損壞，請勿使用

請正確使用電線、插頭

- 請獨立使用額定電流 10 A/220 V 交流電插座（若與其他電器共用，可能因發熱導致火災）
- 插頭需確切插入至底部（否則可能因觸電、發熱而導致火災。插頭如有破損及插座出現鬆脫時，請勿使用）
- 定期用乾布擦拭插頭（灰塵或濕氣積壓，可能導致絕緣不良，引起火災）
- 長時間不使用或進行保養時，必須拔出插頭
- 拔出插頭時，必須拿著插頭拔出（切勿拉拽電線）（可能因觸電或短路而導致火災）

本產品應確保可靠接地（當發生故障或漏電時有觸電危險）
→ 請使用單相兩極接地插座或委託專業人員進行接地作業

使用要求

■ 必須正確使用洗碗碟機

- 請勿靠近電視機、收音機等電器產品（可能導致影像錯亂或出現雜音）
- 請勿用手注水洗滌（以免造成漏水、破損或異常警報）
- 請勿用於洗滌和烘乾餐具以外的用途（可能導致故障）
- 運作時，請勿傾斜或移動機身（可能導致漏水）
- 機門不應一直處於打開的位置（可能導致器具翻倒）
- 當油污較多時，請適量增加洗碗碟機專用洗滌劑（以免產生異味）

■ 必須使用洗碗碟機專用洗滌劑！

- 請勿使用洗潔精或梳打粉（以免產生大量泡沫，導致漏水或故障）
→ 請使用洗碗碟機專用洗滌劑（以下簡稱「洗滌塊」或「洗碗粉」）



- 若使用洗潔精浸泡或預洗，必須先將餐具的洗滌劑沖洗乾淨，才可放入洗碗碟機。

提示

- 請勿安裝在可能會凍結的地方（0℃以下的地方）（若凍結後沒有妥善處理，可能會造成進水閥或管道破損）
→ 如需進行排水防止凍結處理，請聯絡服務中心
- 若水中含有雜質，請勿使用，可能導致供水不良、運作故障
- 剛購買時，洗碗碟機中的橡膠、樹脂可能會發出一些異味，對人體並無不良影響，經過一段時間後異味會自動消失。
- 本說明書中「X」表示錯誤或禁止事項；「○」表示正確或適當事項。

■ 為防止火災、燙傷、觸電等...



擺放刀具及其他尖銳餐具時，必須平放或尖頭朝下放入碗籃內。
（以免受傷）

出現異常、故障時，應立即停止使用，關閉進水閥，切斷電源
（可能導致冒煙、起火、觸電）
→ 如需檢修，請聯絡服務中心

- 異常、故障示例
- 有時接通電源後仍無法運作
 - 開啓/關閉機門異常
 - 運作時，發出異常聲響
 - 機身變形或異常發熱

■ 為防止火災、受傷等...



請勿放入菜刀
（以免損壞洗碗碟機）

請勿按壓打開的機門
（可能因倒下、跌落導致受傷）

請勿靠近、觸碰排水管、排氣口
（排出的熱水、熱風、蒸氣可能導致燙傷）

當與熱水器連接使用時，請注意其他水龍頭打開時流出的熱水
（可能導致燙傷）

餐具露出機身時，請勿強行關閉機門
（可能導致機門變形、熱水飛濺或燙傷）

開門時，請勿用力掰著機門上部強行打開
（可能導致機門變形、熱水飛濺或燙傷）

開關機門時，請注意不要夾到手指
（可能導致受傷）

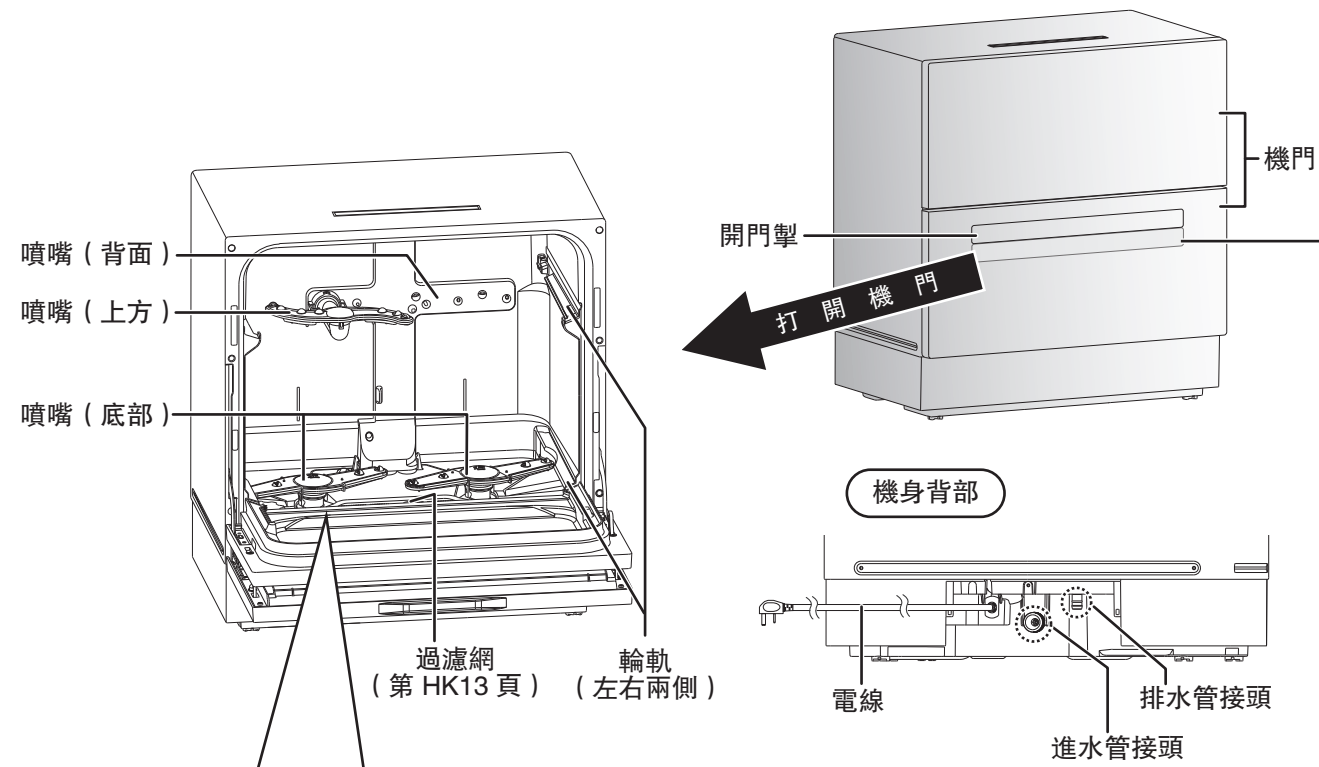
請勿讓機門保持長開狀態
（可能導致餐具翻倒、磕碰受傷）

操作結束後，請關閉水龍頭
（可能導致漏水）

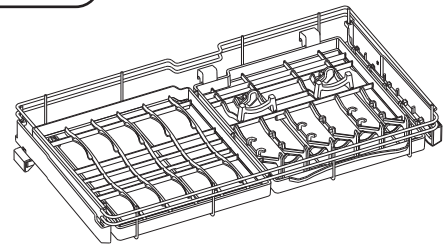
本洗碗碟機適合家居以及類似的環境中使用，例如：

- 商店、辦公室和其他工作場所的員工廚房；
- 農莊；
- 供酒店、旅館和其他住宿場所的顧客使用；
- 提供早餐的住宿場所使用。

部件名稱 / 附件

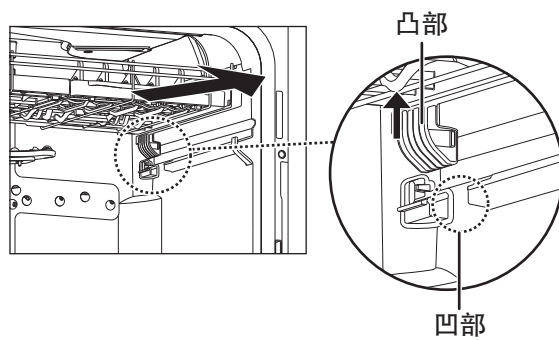


上層碗籃



取出方法

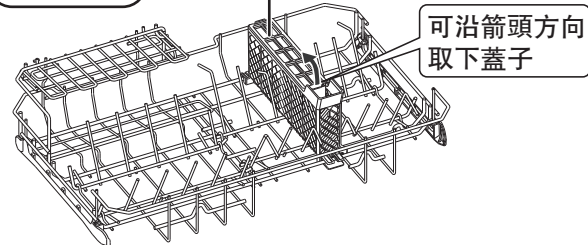
如圖示，把碗籃凸部從凹部向上提起，再拉出即可



安裝方法

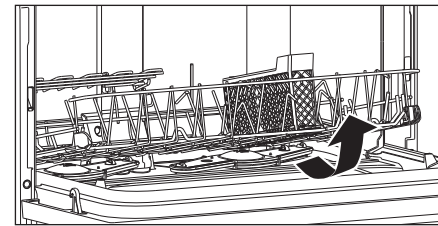
按照與取出碗籃的方法相反的順序進行安裝

下層碗籃



取出方法

先拉出碗籃，再向上拉起即可脫離

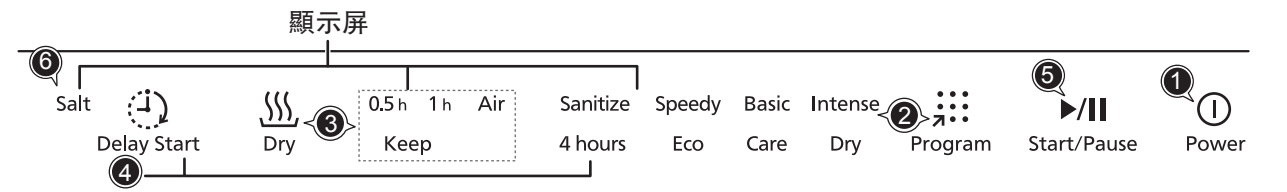


安裝方法

對準輪軌滑入即可

●本說明書插圖的形狀及顏色與實物可能有差異，請以實物為準。

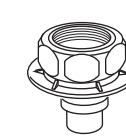
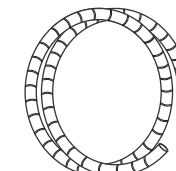
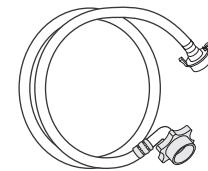
控制板



- ① **Power** 電源開關鍵
●開啓電源後，自動設定為上一次的操作程序（若上一次為「Dry Only（只乾碗）」程序則除外）。
- ② **Program** 程序鍵
●選擇清洗程序，每按一次，可以切換清洗模式，顯示屏的指示燈會循環亮燈顯示相關模式（第 HK10 頁）。
- ③ **Dry** 乾碗鍵
●每按一次，可切換乾碗模式，顯示屏將會隨之循環顯示相應模式（第 HK11 頁）。
- ④ **Delay Start** 延遲啟動鍵
●按下此鍵，4 小時後會自動開始運作，而顯示屏「4 hours（4 小時）」指示燈會亮燈。
●再按一次，會取消延遲啟動程序，顯示屏「4 hours（4 小時）」指示燈會熄滅。
- ⑤ **Start/Pause** 開始/暫停鍵
●按下此鍵後開始運作。若在運作中按下此鍵運作會暫停，再按此鍵，運作會繼續。
●上述步驟後若沒有再按此鍵，10 分鐘後電源將會自動切斷。
●若機門未關上，按下此鍵不會啟動操作。
- ⑥ **Salt**
●當專用鹽不足時，顯示屏「Salt（專用鹽）」指示燈會亮燈。
→ 香港地區使用時無需添加專用鹽。請設置代碼為 0，指示燈會熄滅。（第 HK9 頁）

附件

- ① 進水管（1 根）
- ② 排水管（1 根）
- ③ 進水管接頭（1 個）
- ④ 墊片（1 個）



- ⑤ 卡箍（1 個）



- ⑥ 吸盤（1 個）



提示

- 隨附洗碗碟機專用洗滌劑免費試用裝 1 盒
- 請參閱「安裝方法」（第 HK19 頁）進行安裝

使用前的確認與準備



注意



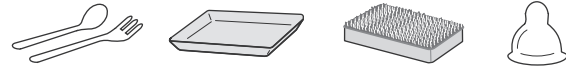
禁止洗滌強化玻璃製品
(可能因粉碎並飛濺而導致受傷)



確認不適合洗碗碟機洗滌的器皿

■ 請勿放入容易被甩飛的輕質物品 (可能導致破損或產生冒煙、燒焦、異味)

- 塑膠湯匙、蓋子
- 發泡膠容器
- 海綿、洗碗布等
- 奶瓶的奶嘴



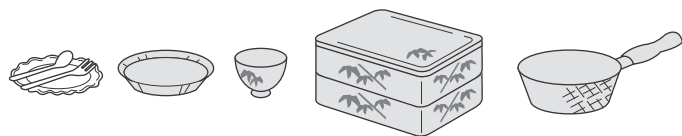
■ 請勿放入非耐熱 (容易受熱變形) 的器具

- 耐熱低於 90 °C 的塑膠器具 (包括沒有耐熱標識的器具)



■ 請勿放入容易褪色或塗層容易剝落的餐具

- 銀、鋁、銅、鐵餐具
- 木 (竹、藤) 餐具
- 塗漆餐具、貼金餐具、彩繪餐具
- 氟層加工平底鍋



■ 請勿放入易碎餐具

- 有裂痕、破損的餐具
- 裂紋釉餐具 (有裂縫花紋的餐具)
- 水晶玻璃、鋼化雕花玻璃
- 附有木柄的鍋具



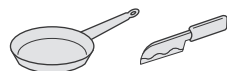
■ 請勿放入瓶口細小、內部無法清洗的餐具

- 瓶子、酒壺



■ 請勿放入容易生鏽的餐具

- 鐵製鍋、菜刀



- 其他以上未提及或不確定可否可以由洗碗碟機洗滌的餐具，請參考有關洗碗碟機專用洗滌劑的說明，或諮詢有關餐具經銷商

餐具準備

燒焦焦糊

烤焗、蒸蛋後的器皿、
燒焦鍋具的頑固污漬
難以清洗
→ 事先浸泡、清理



食物殘渣

可能導致再次粘附：調料、香料、芝麻等細小殘留物
可能導致閥門故障：牙籤、魚骨、橡筋圈等
可能導致異味：魚皮等
→ 事先清除食物殘渣、異物



油污嚴重

可能導致再次粘附
→ 事先用手清洗



■ 以下污漬可能無法徹底清除。

- 累積的茶銹
- 唇膏污漬 (視乎個別牌子)
- 沾染食物色素的塑膠餐具

■ 若食物色素 (番茄醬、咖喱等) 較多，色素可能沾染機身內部，建議事先洗掉。

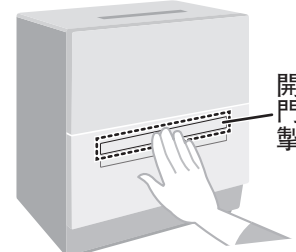
快速使用指南

- ## 1 準備
- 確認是否正確安裝 (第 HK19 - HK24 頁)，確認過濾網的安放狀況 (第 HK13 頁)
 - 確認餐具是否均適合由洗碗碟機清洗 (第 HK5 頁)

2 擺放餐具 (第 HK6 - HK8 頁)

① 打開機門時

① 按開門掣



② 打開機門



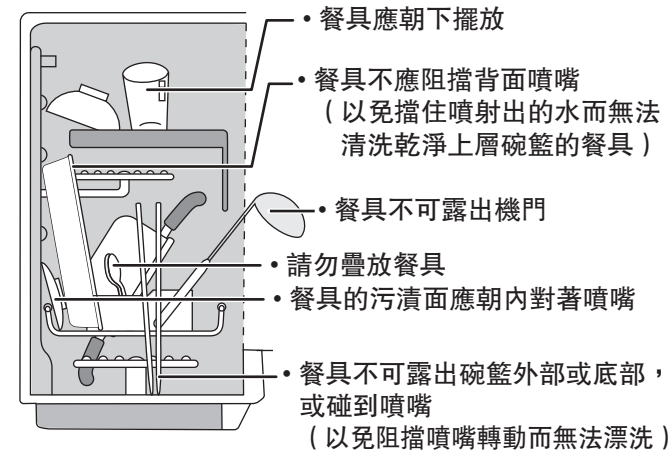
■ 關閉機門時

如圖示按住開門掣上方中央位置，
直至機門左右門鎖確切鎖上為止

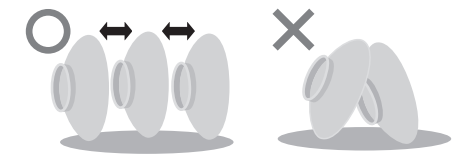


② 擺放餐具

餐具擺放不正確，可能導致機門無法開關，發生蒸氣洩漏、漏水，導致機身和餐具破損、變形，或影響清潔效果，因此請遵守以下事項。



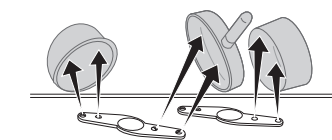
■ 請勿疊放餐具



■ 餐具底部的凹面容易殘留水分，請稍微傾斜擺放



■ 污漬面應朝內對著噴嘴



3 加入專用洗滌劑 (第 HK9 頁)

- 只能使用洗碗碟機專用洗滌劑，並仔細閱讀所購專用洗滌劑的注意事項，遵守其使用說明。

4 清洗~乾碗 (第 HK10 - HK11 頁)

- 按照需要選擇程序、乾碗等功能，按 Start/Pause (開始/暫停) 鍵開始運作。
- 運作期間若不得不打開機門 (例如想添加餐具) 時，必須先按 Start/Pause (開始/暫停) 鍵然後慢慢打開。(否則洗滌水可能會濺出)
- 運作期間若沒有按下 Start/Pause (開始/暫停) 鍵便打開機門，運行會停止。
→ 關好機門，便可重新運作。

5 完成

- 發出 6 聲「嗶」响，運作結束。
- 運作結束 30 分鐘後，方可取出餐具。(運行剛結束時，機內溫度仍然很高，容易燙傷)
- 清洗過濾網 (第 HK13 頁)

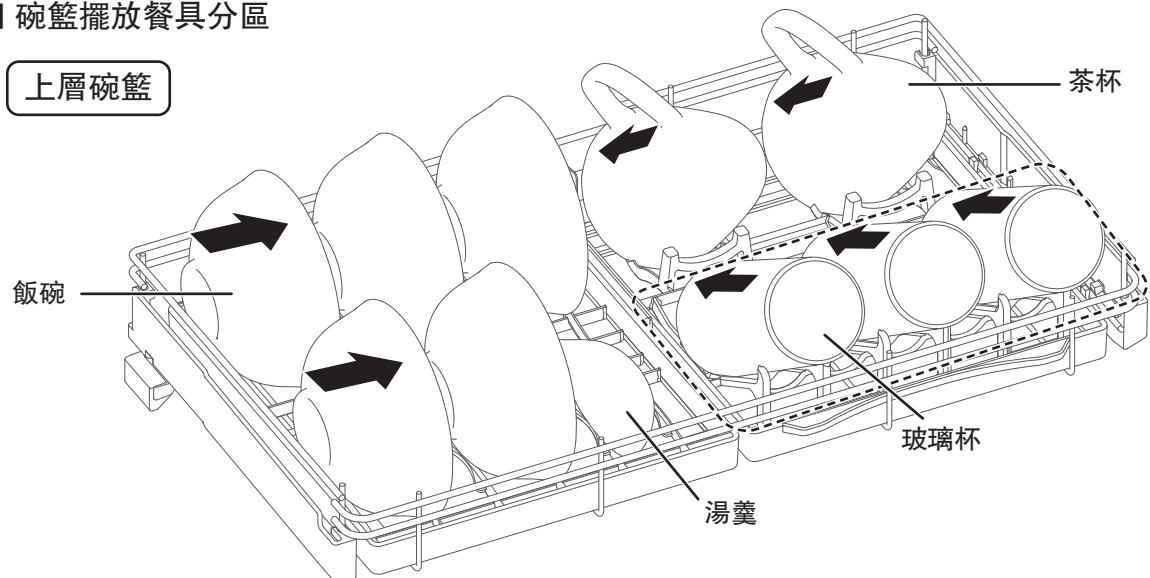
使用方法

擺放餐具

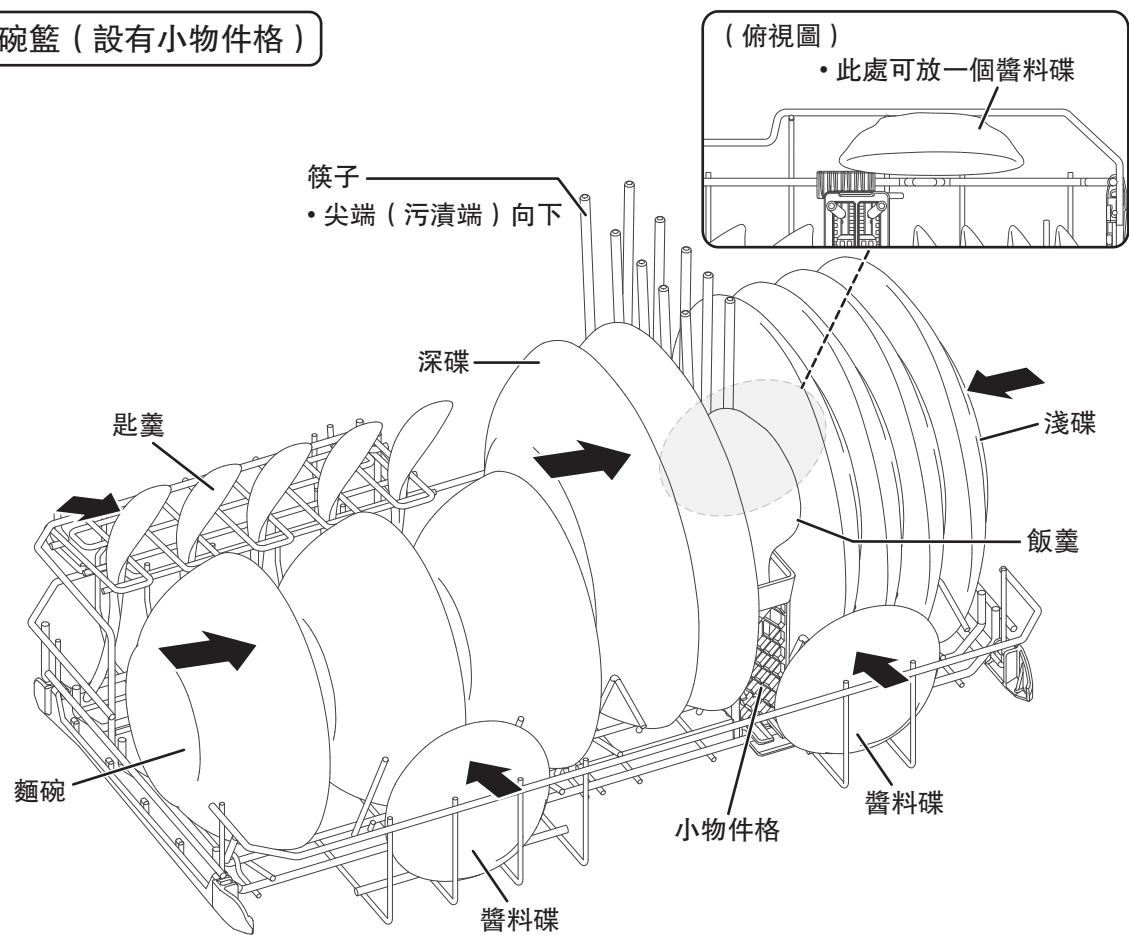
● 擺放餐具時，請將餐具污漬面沿著 ➡ 方向朝向各噴嘴，以便噴到水，達到良好洗潔效果。

■ 碗籃擺放餐具分區

上層碗籃



下層碗籃 (設有小物件格)

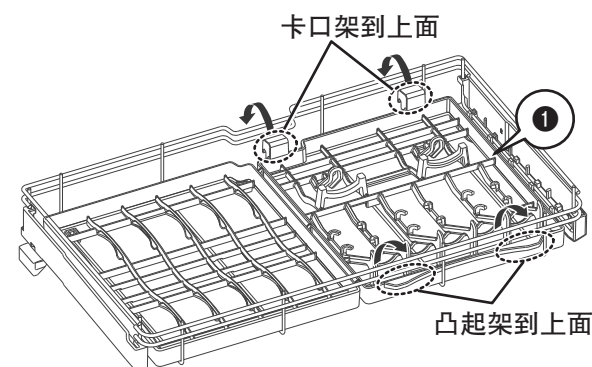


■ 調校碗籃

洗碗碟機上下層碗籃的支架均可調校 (共有 4 處可調校部分)，以方便擺放較大、較高的餐具。

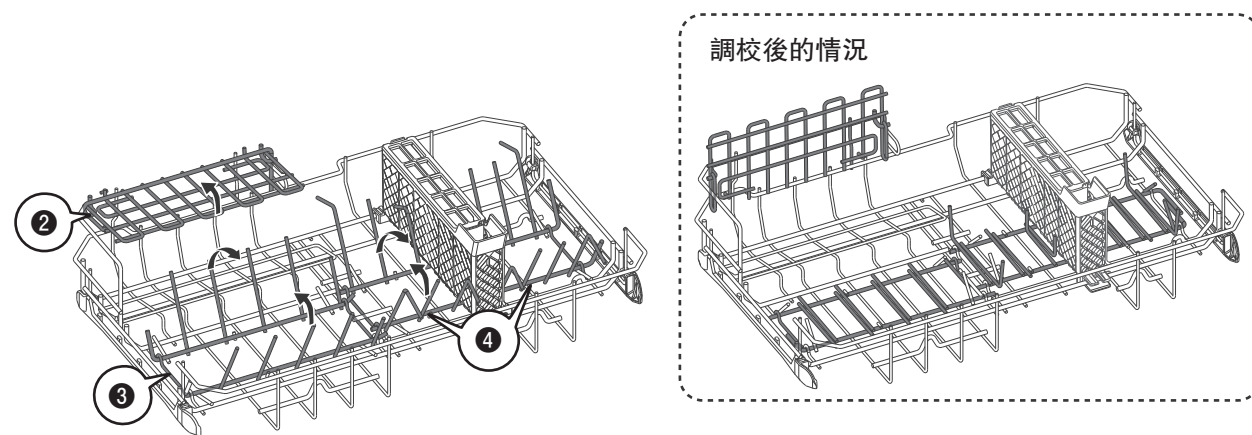
上層碗籃 可調校部分 (1)

當下層碗籃擺放較長的餐具例如筷子而碰到上層碗籃時，可將上層碗籃的樹脂架調高一層。



下層碗籃 可調校部分 (2, 3, 4)

若想擺放較大的餐具例如鍋具時，可將放置匙羹的支架收起來，或將下層碗籃放置麵碗、深碟的支架放平。



提示

- 洗碗碟機容納餐具的大小要求如下：
 - 【上層碗籃】玻璃杯：高度 160 mm 以下
 - 【上層碗籃】茶杯：高度 120 mm 以下
 - 【上層碗籃】湯羹：長度 250 mm 以下
 - 【下層碗籃】醬料碟：直徑 180 mm 以下
 - 【下層碗籃】深碟、淺碟：直徑 230 mm 以下，若將上層碗籃可調校部分 (1) 調高時，則為 270 mm 以下
 - 【下層碗籃】小物件格內物品：高度 330 mm 以下
- (筷子較多時，可取下小物件格上的蓋子 (第 HK3 頁)，便可放入較多物品)

使用方法

添加洗滌劑 · 清洗

軟水系統

1 香港地區使用時請設置代碼為0。

如果所處地區的水硬度較高，餐具及碗籃容易留下白色水垢。洗碗碟機可根據水質硬度進行設定，加入專用鹽後，自動將水的硬度降低軟化，以達到更佳清潔效果。

- 進行以下設定，否則可能會多消耗專用鹽、自來水或令清潔效果欠佳。

■ 地區設定 (在關閉電源狀態下設定)

確定關閉電源

- 1 同時按下 **Delay Start (延遲啟動)** 鍵和 **Start/Pause (開始/暫停)** 鍵 2.5 秒，發出 2 聲「嗶」响後，開始設定
- 2 按 **Delay Start (延遲啟動)** 鍵，功能代碼選擇「Air (風乾)」
- 3 再按 **Program (程序)** 鍵，根據水質硬度選擇相應選項代碼
- 4 按 **Start/Pause (開始/暫停)** 鍵保存設定，發出 6 聲「嗶」响，完成設定

功能代碼 (按延遲啟動鍵)	選項代碼 (水質硬度) (按程序鍵)	顯示屏指示燈 (亮燈)
Air (風乾)	0 100 [mg/L] 以下	Air (風乾)
	1 100 - 200 [mg/L]	Air (風乾) + Intense (高效清洗)
	2 200 - 300 [mg/L]	Air (風乾) + Basic (標準)*
	3 300 - 400 [mg/L]	Air (風乾) + Intense (高效清洗)、Basic (標準)
4 400 - 500 [mg/L]	Air (風乾) + Speedy (超快速)	

※: 表示該內容為出廠時的設定

香港地區使用時，設置代碼為 0，無需添加專用鹽。請跳過此步驟，到添加洗滌劑。

■ 添加專用鹽的方法 (在關閉電源狀態下設定)

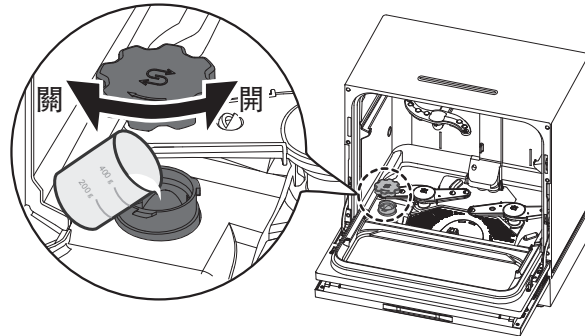
確定關閉電源

取出下層碗籃，旋開蓋子，小心倒入專用鹽 (約 400 g)，再旋緊蓋子。

- 第一次使用時，加鹽之後，還需注滿水 (約 200 g)，並充分攪拌溶解。

提示

- 加鹽時可用計量器稱量，用市面出售的量杯倒入。若不小心把鹽撒出，請擦掉蓋口上的鹽。(以免撒出的鹽與蓋子摩擦，令其密封程度變差)
- 第一次使用或顯示屏亮起「Salt (專用鹽)」指示燈時，請添加洗碗碟機專用鹽 (不可使用食用鹽)，並仔細閱讀所購專用鹽的注意事項，遵照其使用說明。
- 若使用內附專用鹽的多合一洗碗碟機專用洗滌劑，而水質硬度小於 300 mg/L 時，可無需使用專用鹽，但若大於 300 mg/L 時，則仍需加入專用鹽。



添加洗滌劑

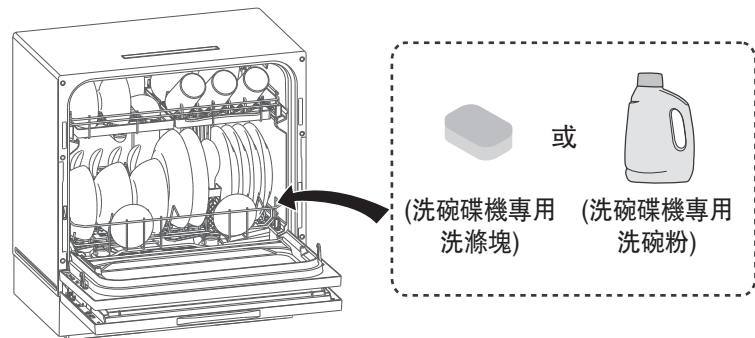
2 添加專用洗滌劑

按照所購洗碗碟機專用洗滌劑的使用說明，直接適量加入機內便可。

一次大約標準使用量 (參考)
洗滌塊: 1 塊 (約 10 g)
洗碗粉: 21 g

提示

- 請仔細閱讀所購洗碗碟機專用洗滌劑的注意事項，並遵照其使用說明。



選擇功能

3 按下 ①，開啓電源

- 顯示屏所有程序的指示燈閃爍一下後，最後只顯示上一次操作的指示燈 (其他指示燈會熄滅)。(若上一次為「Dry Only (只乾碗)」則除外)
- 若顯示屏所有程序的指示燈一直亮燈，請關閉機門然後重新開啓電源。

4 按下 ④，選擇程序

- 每按一次程序鍵，可切換以下圖表中的所示模式，顯示屏的指示燈亦會隨之如下循環亮燈。
- 亮燈時默認為上一次操作的設定 (若上一次為「Dry Only (只乾碗)」則除外) (出廠設定默認為以下①模式)。

編號	主要程序	附加程序	主要乾碗功能	附加乾碗功能	操作內容及大約操作時間 (約)
①	Basic (標準)	-	0.5 h (30 分鐘)	Keep (持續乾碗)	清洗 (31 分鐘) → 漂洗 3 次 (35 分鐘, 70 °C) → 乾碗 (30 分鐘) → 持續乾碗 (2 小時)
②	Basic (標準)	Sanitize (高溫除菌)	0.5 h (30 分鐘)	Keep (持續乾碗)	清洗 (31 分鐘) → 漂洗 3 次 (43 分鐘 - 53 分鐘, 最高溫度可達 80 °C) → 乾碗 (30 分鐘) → 持續乾碗 (2 小時)
③	Intense (高效清洗)	-	0.5 h (30 分鐘)	Keep (持續乾碗)	清洗 (60 分鐘) → 漂洗 3 次 (40 分鐘, 70 °C) → 乾碗 (30 分鐘) → 持續乾碗 (2 小時)
④	Intense (高效清洗)	Sanitize (高溫除菌)	0.5 h (30 分鐘)	Keep (持續乾碗)	清洗 (60 分鐘) → 漂洗 3 次 (48 分鐘 - 58 分鐘, 最高溫度可達 80 °C) → 乾碗 (30 分鐘) → 持續乾碗 (2 小時)
⑤	Eco (節能)	-	Air (風乾)	-	清洗 (31 分鐘) → 漂洗 3 次 (73 分鐘, 60 °C) → 風乾 (240 分鐘)
⑥	Eco (節能)	Sanitize (高溫除菌)	Air (風乾)	-	清洗 (31 分鐘) → 漂洗 3 次 (81 分鐘 - 91 分鐘, 最高溫度可達 80 °C) → 風乾 (240 分鐘)
⑦	Care (清潔機身)	-	-	-	清洗 (108 分鐘) → 漂洗 3 次 (26 分鐘, 60 °C)
⑧	Care (清潔機身)	Sanitize (高溫除菌)	-	-	清洗 (108 分鐘) → 漂洗 3 次 (34 分鐘 - 44 分鐘, 最高溫度可達 80 °C)
⑨	Dry Only (只乾碗)	-	1 h (60 分鐘)	-	乾碗 (60 分鐘)
⑩	Speedy (超快速)	-	-	-	清洗 (17 分鐘) → 漂洗 2 次 (18 分鐘, 60 °C)
⑪	Speedy (超快速)	Sanitize (高溫除菌)	-	-	清洗 (17 分鐘) → 漂洗 2 次 (26 分鐘 - 36 分鐘, 最高溫度可達 80 °C)

提示

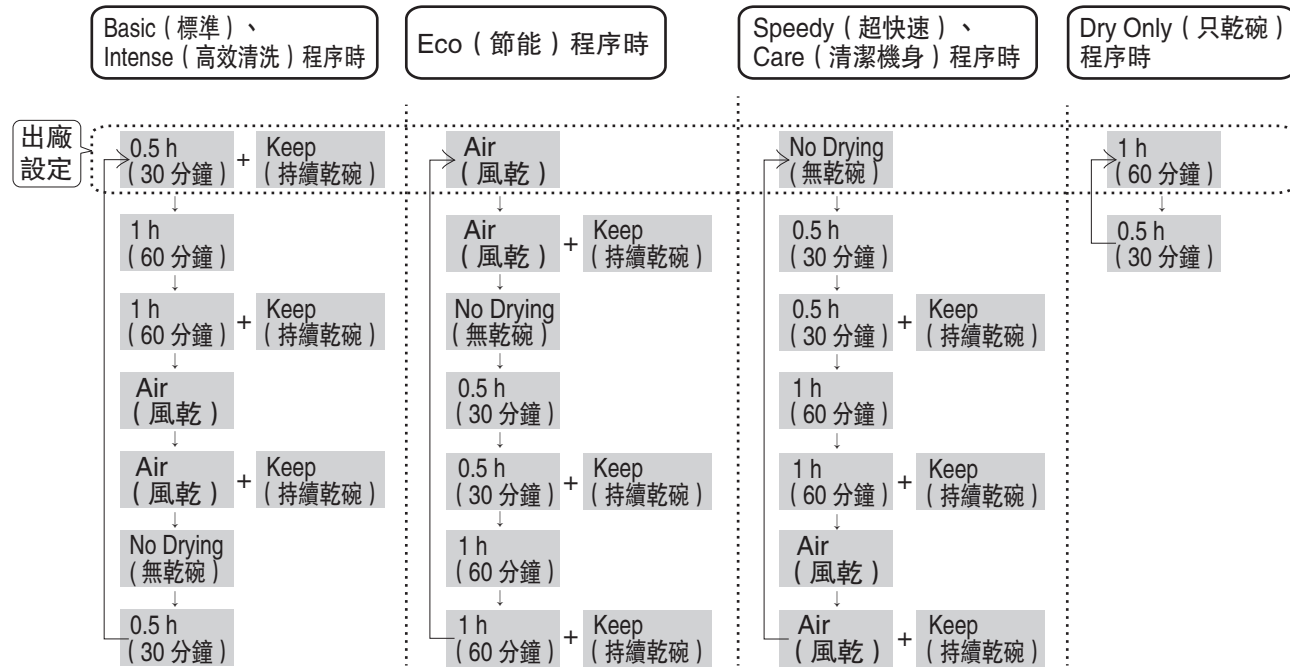
- ①②適合餐後立即清潔；③④適合飯後數小時或油污較多時應用；⑤⑥適合餐後立即洗滌，餐具較少或想節水節電時應用；⑦⑧適合清潔和保養機身內部時應用；⑨適合手洗後只需乾碗或想將餐具烘熱時應用；⑩⑪適合餐具污漬很少或輕微時應用。
- Basic (標準)、Intense (高效清洗)、Care (清潔機身)、Eco (節能)、Speedy (超快速) 程序 (即: 除「Dry Only (只乾碗)」之外的程序) 均可補加或取消「Keep (持續乾碗)」的設定，設有「Keep (持續乾碗)」程序進行時，會間歇性吹風約 2 小時。
- 「Sanitize (高溫除菌)」程序可與其他程序 (「Dry Only (只乾碗)」程序除外) 組合應用，漂洗時的最高水溫可變為 80 °C，清潔效果更佳。
- 上述圖表中的時間為室溫 20 °C、進水溫度 15 °C，水壓 0.24 MPa 下所測量的溫度，實際操作時間視乎室溫、水溫以及使用水壓、餐具擺放情況等變化而有差異。
- 操作過程中，相關模式的指示燈會不中斷亮著、熄滅，表示操作正在進行中。

使用方法

乾碗 · 延遲啟動 · 更改設定

5 按下 ，選擇乾碗

- 想調整上一個程序中所包含的乾碗功能時，可按乾碗鍵來進行，每一次可按照下述圖表進行切換乾碗模式，顯示屏的指示燈亦隨之如下循環亮燈。



提示

- 調整 Dry (乾碗) 模式後，整體運作時間亦隨之改變。
- 選擇「No Drying (無乾碗)」時，亦會吹風約 3 分鐘 (添加專用鹽時約 30 分鐘)，此為正常現象。(排出一部分熱氣，以免燙傷)

6 按下 ，啟動

- 按照所選的程式、乾碗開始運轉，結束時發出“嗶~”6 聲。
- 上述步驟後未按此鍵，10 分鐘後將會自動關閉電源。

要求

- 操作結束 30 分鐘後再取出餐具。(以免燙傷)
- 每次操作結束後，請清潔過濾網。(第 HK13 頁)


Delay Start (延遲啟動) 程序

可按照以下方法預定 4 小時後再開始運作。

根據第 HK9 – HK11 頁進行到第 5 步驟後

按下 ，顯示屏顯示 4 hours → 按下  (4 小時後開始運作)

提示

- 「Dry Only (只乾碗)」、「Speedy (超快速)」、「Speedy (超快速) + 「Sanitize (高溫除菌)」程序時不能延遲啟動。
- 想取消延遲啟動，請按下 ，顯示屏「4 hours (4 小時)」指示燈熄滅即可。

更改設定

按照喜好或實際情況，可更改各種設定。

增強清洗設定

若想加強清洗效果，延長清洗時間，請如下更改設定。

確定關閉電源

- 同時按下 Delay Start (延遲啟動) 鍵和 Start/Pause (開始/暫停) 鍵 2.5 秒，發出 2 聲「嗶」响後，開始設定
- 按 Delay Start (延遲啟動) 鍵，功能代碼選擇「1 h (60 分鐘)」
- 再按 Program (程序) 鍵，按照需要選擇選項代碼 (是否增強清洗)
- 按 Start/Pause (開始/暫停) 鍵保存設定，發出 6 聲「嗶」响，設定完成

功能代碼 (按 Delay Start (延遲啟動) 鍵)	選項代碼 (是否增強清洗) (按 Program (程序) 鍵)	顯示屏顯示 (亮燈)
1 h (60 分鐘)	0	無需
	1	增強

增強乾碗設定

若想增強乾碗效果，延長乾碗時間時，請如下更改設定。

確定關閉電源

- 同時按下 Delay Start (延遲啟動) 鍵和 Start/Pause (開始/暫停) 鍵 2.5 秒，發出 2 聲「嗶」响後，開始設定
- 按 Delay Start (延遲啟動) 鍵，功能代碼選擇「Air (風乾) + 1 h (60 分鐘)」
- 再按 Program (程序) 鍵，按照需要選擇選項代碼 (是否增強乾碗)
- 按 Start/Pause (開始/暫停) 鍵保存設定，發出 6 聲「嗶」响，設定完成

功能代碼 (按 Delay Start (延遲啟動) 鍵)	選項代碼 (是否增強乾碗) (按 Program (程序) 鍵)	顯示屏顯示 (亮燈)
Air (風乾) + 1 h (60 分鐘)	0	無需
	1	增強

關閉操作結束提示聲設定

若想關閉洗碗結束的提示聲，請如下進行更改。

確定關閉電源

- 同時按下 Delay Start (延遲啟動) 鍵和 Start/Pause (開始/暫停) 鍵 2.5 秒，發出 2 聲「嗶」响後，開始設定
- 按 Delay Start (延遲啟動) 鍵，功能代碼選擇「0.5 h (30 分鐘)」
- 再按 Program (程序) 鍵，按照需要選擇選項代碼 (是否關閉操作結束提示聲)
- 按 Start/Pause (開始/暫停) 鍵保存設定，發出 6 聲「嗶」响，設定完成

功能代碼 (按 Delay Start (延遲啟動) 鍵)	選項代碼 (關閉、開啓操作結束提示聲) (按 Program (程序) 鍵)	顯示屏顯示 (亮燈)
0.5 h (30分鐘)	0	關閉
	1	開啓

※ 表示該內容為出廠時的設定

保養



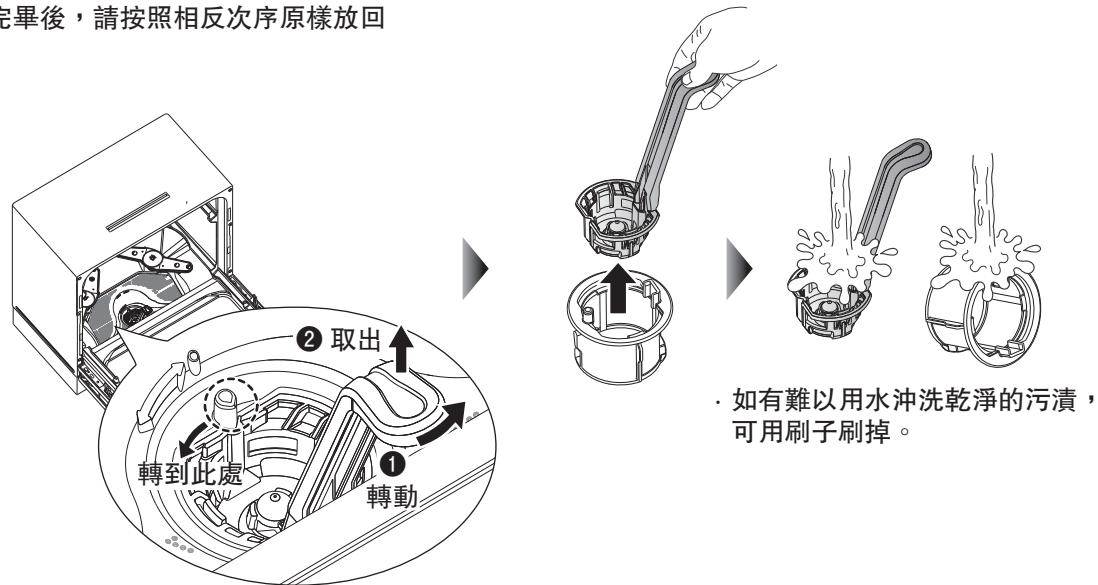
- 操作結束 30 分鐘後，方可取出餐具、清洗過濾網、進行保養（以免燙傷）
- 必須關閉電源才可進行保養。

每次清洗

清洗過濾網

請先取出碗籃，然後取出過濾網

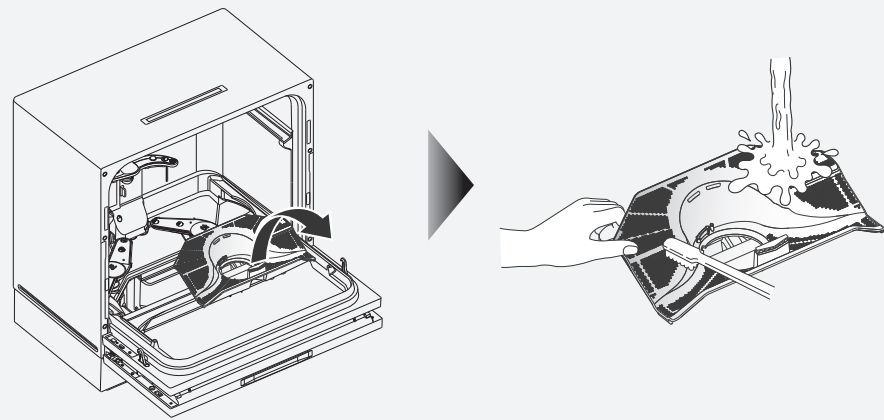
- 如圖示，從機內取出過濾網，再拆開過濾網，用水沖洗乾淨
- 清洗完畢後，請按照相反次序原樣放回



如想清洗排水口過濾網...

排水口過濾網可每月清洗一次，或對污漬特別在意時取出清洗（需如上所述先取出碗籃，然後取出過濾網）

- 取出過濾網時，底部會有積水，這是正常現象。
- 清洗完畢後，請即放回。



提示

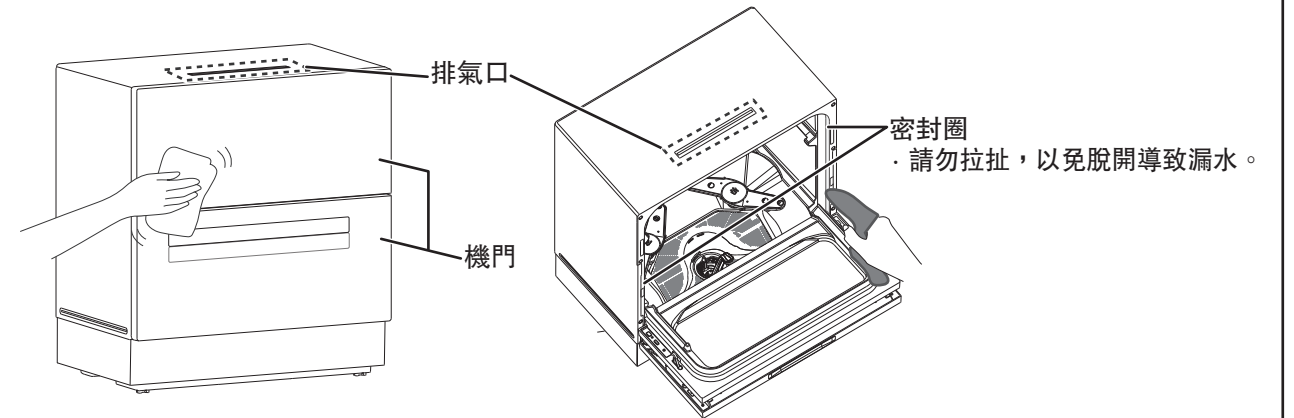
- 若過濾網被堵塞，清潔效果可能轉差，還會導致發霉、異味、漏水等。

每月一次

清潔機門、排氣口、密封圈、機身內部

用擰乾的軟布擦拭機門、排氣口、密封圈等各部件

- 洗碗碟機邊緣密封圈、排氣口等位置容易聚積污漬，請仔細清潔保養。
- 拉出碗籃，將洗碗碟機內壁上的污漬擦拭乾淨。






每月 2~3 次

清潔主機（清潔機身程序）

選擇「Care（清潔機身）」程序，自動進行清潔主機

進行「Care（清潔機身）」時，請勿放入餐具。

- 1 請在機內放入洗碗碟機專用洗滌劑。（約標準使用量的 2 倍）
- 2 按下 ，開啓電源 Power
- 3 按下 ，選擇「Care（清潔機身）」程序 Program
- 4 按下 ，開始清潔機身 Start/Pause

提示

- 操作過程中會暫停 2 次（約相距 30 分鐘）（透過高溫蒸氣令污漬浮起）
- 噴水可能無法沖洗機門的邊緣密封圈。→ 請用手擦拭乾淨
- 番茄醬、咖喱等色素難以清洗乾淨。→ 請事先沖洗乾淨再放入
- 第 1 步中的洗滌劑可用市面出售的洗碗碟機專用的機體洗滌劑代替，使用時請遵照其說明要求。

常見問題

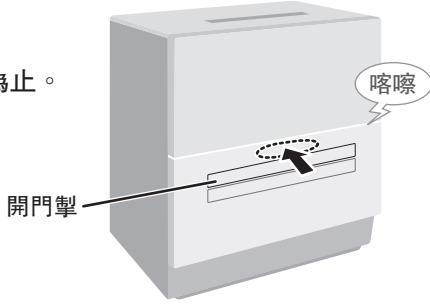
■ 使用洗碗碟機時若出現以下情況，請按照下表確認並處理。

現象	確認情況及處理方法
餐具清潔效果不理想	<ul style="list-style-type: none"> ● 是否未添加洗滌劑，或是否使用了非洗碗碟機專用洗滌劑？ → 請添加適量洗碗碟機專用洗滌劑（第 HK9 頁） ● 餐具是否碰到噴嘴，導致噴嘴無法旋轉而影響清潔效果？ ● 餐具擺放是否妥當（重疊或朝向錯誤）？（第 HK6 – HK8 頁） ● 燒焦燒糊難洗的餐具是否先清理過？（第 HK5 頁） ● 使用的水是否富含礦物質？ → 請適量增多洗碗碟機專用洗滌劑 ● 機內過濾網網眼是否堵塞？ → 請清洗乾淨（第 HK13 頁） ● 是否未查詢所處地區的水質硬度，且未重新設定地區代碼？（第 HK9 頁）
使用粉狀洗滌劑（洗碗粉）後有殘留	<ul style="list-style-type: none"> ● 洗碗粉是否受潮或結塊？ → 如果結塊，使用前請先捏碎。
玻璃餐具變得發白、不透明	<ul style="list-style-type: none"> ● 表面有小瑕疵的玻璃餐具經過高溫的洗滌水洗滌後，偶爾會變得發白、不透明。 ● 玻璃上的污漬是否較油膩？ → 請多放入專用洗滌劑或選擇「Intense（高效清洗）」程序
玻璃餐具上留有淡淡的水滴印	<ul style="list-style-type: none"> ● 所處地區的水質硬度是否較大？ → 若水質硬度較大，可重新設定地區代碼（第 HK9 頁）
餐具底部殘留水滴，餐具烘乾效果不理想	<ul style="list-style-type: none"> ● 餐具底部的凹面可能殘留水分。 → 請稍微傾斜放置（第 HK6 頁），或設定為增強乾碗，延長乾碗時間，減少水分殘留（第 HK12 頁）
餐具變黃或稍微泛黑	<ul style="list-style-type: none"> ● 可能因餐具的茶垢或水中含鐵質造成。 → 請常用手擦拭餐具。

異常提示

■ 洗碗碟機顯示屏出現以下提示（同時主機發出警報聲）時，請按照下表確認情況並處理，如無法處理，請聯絡服務中心。
（長按 Program（程序）鍵 5 秒以上，顯示屏會重新顯示上一次發生的異常情況）



現象及含義	確認情況及處理方法
顯示屏 「Basic（標準）」、 「Intense（高效清洗）」同時閃爍 ● 供水不良	請關閉電源後確認以下事項 <ul style="list-style-type: none"> ● 水龍頭或家中水管總掣是否開啓？ ● 是否停止供水？ ● 家中水管、進水管是否凍結？ ● 進水管接頭是否堵塞？ ● 是否使用井水？（若井水雜質較多，容易引起障礙。）
顯示屏 「Intense（高效清洗）」、 「Speedy（超快速）」、 「Care（清潔機身）」同時閃爍 ● 排水不良	請關閉電源後確認以下事項 <ul style="list-style-type: none"> ● 過濾網是否堵塞？（第 HK13 頁） 確認後，請開啓電源，選擇「Dry（乾碗）」進行運作，排水後關閉電源。 若經過上述處理仍有問題，請聯絡服務中心
顯示屏 所有指示燈均亮燈 ● 機門未關或未關好	請按住開門掣上方中間位置，直至機門左右門鎖確切鎖上為止。 （第 HK6 頁） 
顯示屏 「Speedy（超快速）」、 「Intense（高效清洗）」、 「Keep（持續乾碗）」同時閃爍 ● 可能由於出現過量泡沫 ● 可能由於出現滲漏情況	先關掉水龍頭 拔掉電源插頭並保持機門關上 待 30 分鐘後，再接駁電源以重新啓動，檢視顯示屏 <ul style="list-style-type: none"> ● 如顯示屏上 「Speedy（超快速）」、「Intense（高效清洗）」、「Keep（持續乾碗）」停止閃爍，可開啓水龍頭並重新操作 ● 如顯示屏上 「Speedy（超快速）」、「Intense（高效清洗）」、「Keep（持續乾碗）」依然閃爍，請聯絡服務中心

如上述方法仍無法修好故障，或出現其他現象，請拔掉電源插頭，關掉水龍頭並聯絡服務中心。

異常提示 (續)

預防凍結 · 長時間不使用

萬一凍結後對其置之不理，可能造成進水閥及管道破損。如需進行排水防凍處理，請聯絡服務中心。

Panasonic 排水處理工作人員請注意：

■ 若已經凍結，請進行以下操作

- ① 選擇「Speedy (超快速)」程序運作 1 - 2 次進行解凍。(若凍結較嚴重，可重複運作多次)
- ② 運作結束，等待 30 分鐘後，將進水管從主機拆下，然後清除管內的水。
- ③ 拆下前面的橡膠蓋(黑色)，前後左右搖晃洗碗碟機，將裡面的水全部排出。
- ④ 將橡膠蓋裝回原位。

故障排除

■ 請先檢查以下情況，若仍無法修好，或出現其他現象，請聯絡服務中心。

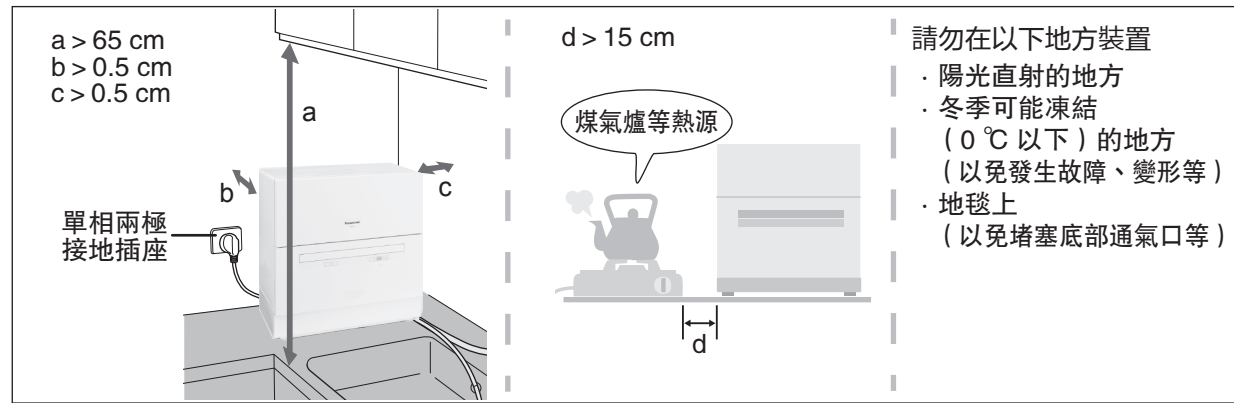
	現象	請確認以下內容
機體	不能運作	● 機門是否確切關好？ → 請關好機門，再重新啟動。
	反覆不停供水、排水	● 是否使用了洗潔精或餐具上附著了洗潔精等非洗碗碟機專用洗滌劑？ → 必須使用洗碗碟機專用洗滌劑。 (洗潔精容易產生大量泡沫，需要增加供水及排水次數以消除泡沫，運作時間會延長，過程中切勿打開機門，以免洩漏。)
	機門周圍結露	● 室內與機內有溫差時，可能結露，並非異常。
	運作中，機門周圍冒出熱氣	● 洗碗碟機會排出一些熱氣或熱風，並非故障。
	使用時間長了後，洗碗碟機內側變得發白	● 這是水中所含礦物質引起的。
	過濾網下方有積水	● 底部有積水，這是正常現象。
	供水沒有停止	● 可能是進水閥故障。請關閉進水閥或自來水管總掣(但不要拔掉電源插頭)，並聯絡服務中心。
氣味	使用時有異味	● 剛購買時，洗碗碟機的橡膠、樹脂可能會發出一些異味，對人體並無不良影響，過一段時間後會自動消失。
	像污水渠的氣味	● 這可能是因長時間不使用，機內殘留的水變質而發出的臭味。 → 請選擇「Care (清潔機身)」程序進行運作。
	魚腥味	● 這是因為過濾網上留有魚皮等殘餘物。 → 請用刷子仔細刷洗乾淨(第 HK13 頁)，若仍有異味，請選擇「Care (清潔機身)」程序進行運作。
異常聲音	噴嘴開始噴射時發出「喀噠」聲	● 這是噴射前噴嘴輪流切換的聲音，並非異常。
	操作時噪音嘈雜	● 由於不同種類的餐具及不同的擺放方式，運作時的聲響感覺上會有差異。 ● 過濾網是否被堵塞？(若被堵塞，機內的水泵發出的聲音可能會忽然變大) → 請清潔過濾網(第 HK13 頁) ● 操作過程中機內電子部件切換時會發出「啞嘰」聲，並非故障。
其他	凍結	● ① 選擇「Speedy (超快速)」程序運作 1 - 2 次(進行解凍)。 ● ② 確認是否可以進行「Speedy (超快速)」。 ● 若長時間不使用而凍結，可能運作 1 - 2 次亦無法解凍。 → 請聯絡服務中心(第 HK17 頁)
	漏水	● 洗碗碟機(安裝位置、排水管、進水管)是否正確安裝？ → 請進行檢查(第 HK24 頁)
	停水	● 切斷電源，停止運轉。恢復供水後，請先打開其他水龍頭排出水管內渾濁的水後再使用。
	停電	● 恢復供電後，按 Start/Pause (開始/暫停) 鍵，開始重新運作。 ● 將從停電時的程序繼續運作。 ● 如果處於預設操作程序待機期間，將取消預設操作程序。
	斷路器跳掣	● 請檢查原因，將斷路器復位，再按 Start/Pause (開始/暫停) 鍵，開始重新運作。 ● 將從斷路器跳掣時的操作繼續運行。 ● 如果處於預設操作程序待機期間，將取消預設操作程序。
	顯示屏上「Salt (專用鹽)」指示燈呈亮燈狀態	● 香港地區使用時請設置代碼為 0，無需添加專用鹽(第 HK9 頁)

安裝方法

- 如果沒有按照本安裝方法進行裝置、試機、檢查而出現事故、損害，則本公司概不負任何責任。
- 安裝完成後，必須試機，檢查無問題後才可使用。
- 請勿使用舊的進水管、排水管，以免漏水。
- 洗碗碟機在出廠前會進行注水測試，若從包裝取出時發現殘留水滴，並非異常。
- 請諮詢當地供水部門或水管施工專業人員，瞭解自來水水壓、流量等情況以便安裝。
 - 本產品適用的進水壓力為 0.05 MPa – 1 MPa（當水壓較低時，操作時間可能會延長）
 - 流量：當水龍頭開盡時，進水流量需達到每分鐘 8 公升以上（當流量較低時，操作時間可能會延長或可能發生異常）
 - 若操作水龍頭時自來水管發出異常聲音（水擊現象），必須安裝指定的減壓閥。

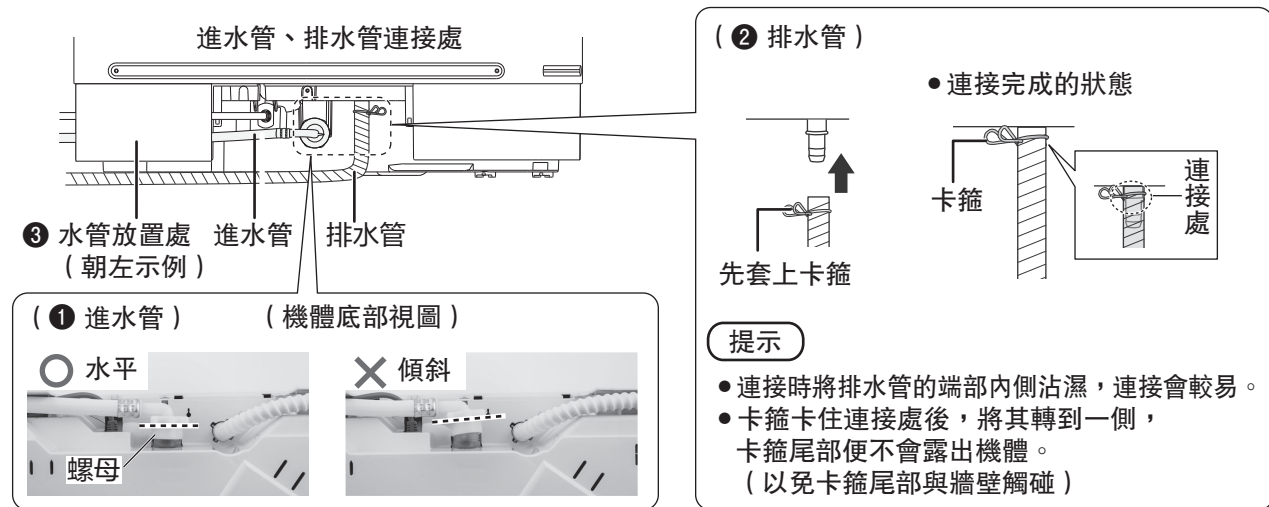
1 確認安裝的位置

- 應盡量在空闊的地點進行安裝。（須確保 $a > 65\text{ cm}$ ， $b > 0.5\text{ cm}$ ， $c > 0.5\text{ cm}$ ， $d > 15\text{ cm}$ ）
- 應放置於堅固、平坦的水平面上。
- 放置的位置應設有獨立的額定 10 A/220 V 交流電單相兩極接地插座。



2 接駁進水管、排水管至機體

- 1 如圖示，將進水管插入機體後，旋緊螺母。（螺母保持水平，以免漏水）
- 2 如圖示，將排水管插入機體後，卡緊卡箍。（卡箍需卡住排水管與機體連接部的端口，以免脫落漏水）
- 3 根據水龍頭、排水管道的位置，朝左或朝右放置進水管、排水管。



3 安裝進水管接頭

- 請增加用於連接洗碗碟機的新水龍頭。必須將進水管接頭配件安裝於橫向水龍頭的端口。
- 請按照進水管接頭安裝說明書安裝進水管接頭到水龍頭上。

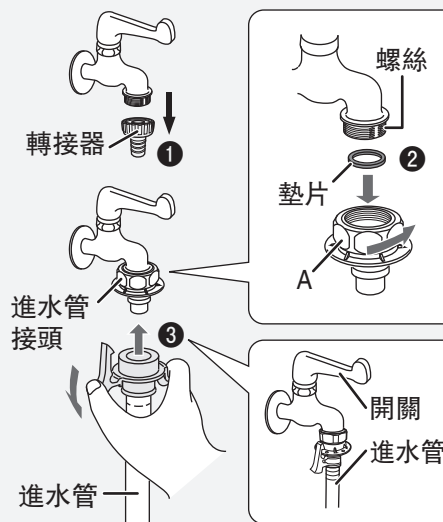
水龍頭款式	安裝前	增加水龍頭 + 進水管接頭 • 進水管接頭	安裝後
增加水龍頭 + 進水管接頭			
橫向水龍頭			

要求事項

- 請勿將進水管接頭安裝到橫向水龍頭以外的端口。

注意

- 將進水管接頭的 A 旋緊。（否則可能導致漏水）



連接進水管

- 1 扭鬆轉接器上的螺絲，取下轉接器。

- 2 將進水管接頭，連同墊片，一同扭緊于水龍頭出水位置。

注意

- 安裝完畢後，請確認固定螺絲已擰緊。

注意

- 如果固定螺絲擰得過緊的話，可能會導致墊圈受損，引起漏水。

- 3 連接進水管

進行下列操作前請先確認進水管的另一側已和洗碗碟機的進水閥相連接。

- 1) 將進水管和水龍頭的出水口相連接。
- 2) 進水管連接完畢後，打開水龍頭的開關。
- 3) 安裝操作完畢後，請仔細確認水龍頭及各安裝部位是否漏水。
- 4) 請務必使用附帶的新進水管，舊進水管不能重複使用。

與熱水器連接使用的確認事項

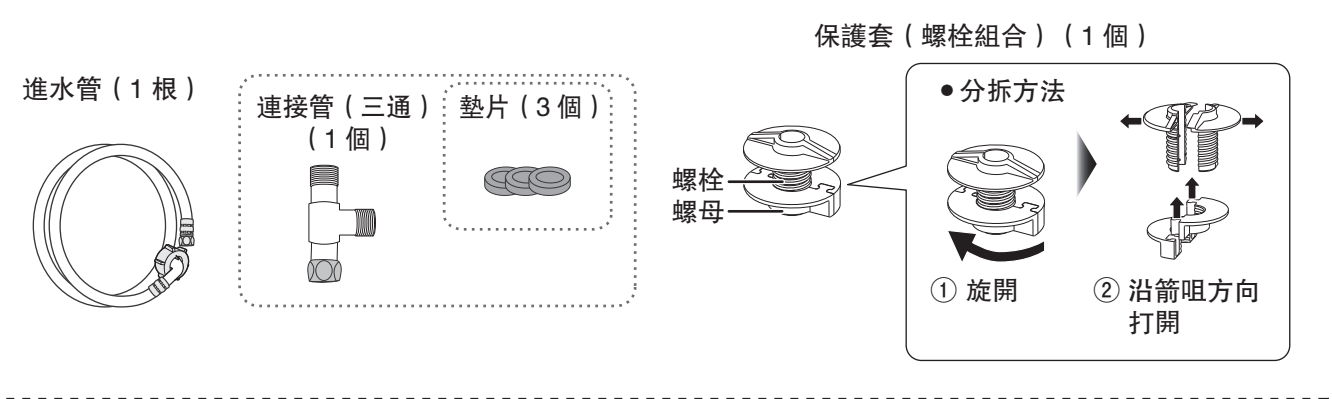
- 若想供應熱水，請連接熱水產率每分鐘 10 公升以上的前置式熱水器。不論供應熱水能力如何，請勿連接後置式熱水器。
- 使用熱水器時，供應的熱水溫度請設定在 $60\text{ }^{\circ}\text{C}$ 以下。（可能導致清潔效果不理想）
- 如果熱水器屬於無法設定溫度的高溫供水型（ $60\text{ }^{\circ}\text{C}$ 以上），則禁止連接。
- 重新連接熱水器時，請聯絡服務中心。（特別是水壓較高的地區，必須將指定的減壓閥安裝到熱水器上）

安裝方法 (續)

● 其他安裝方法 (連接在廚櫃下面)

需要以下另購配件。請向經銷商購買。

另購配件

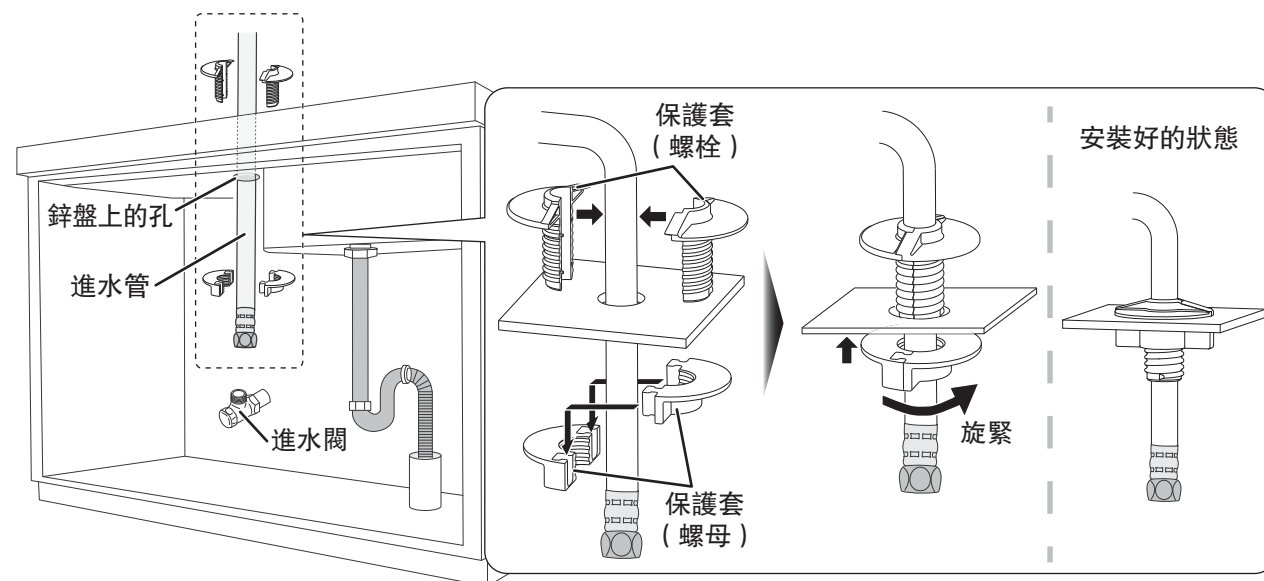


- 要求
- 請勿將本機與熱水器水管連接 (請勿使用熱水)。
 - 本機適用的水溫為 5 °C – 40 °C。

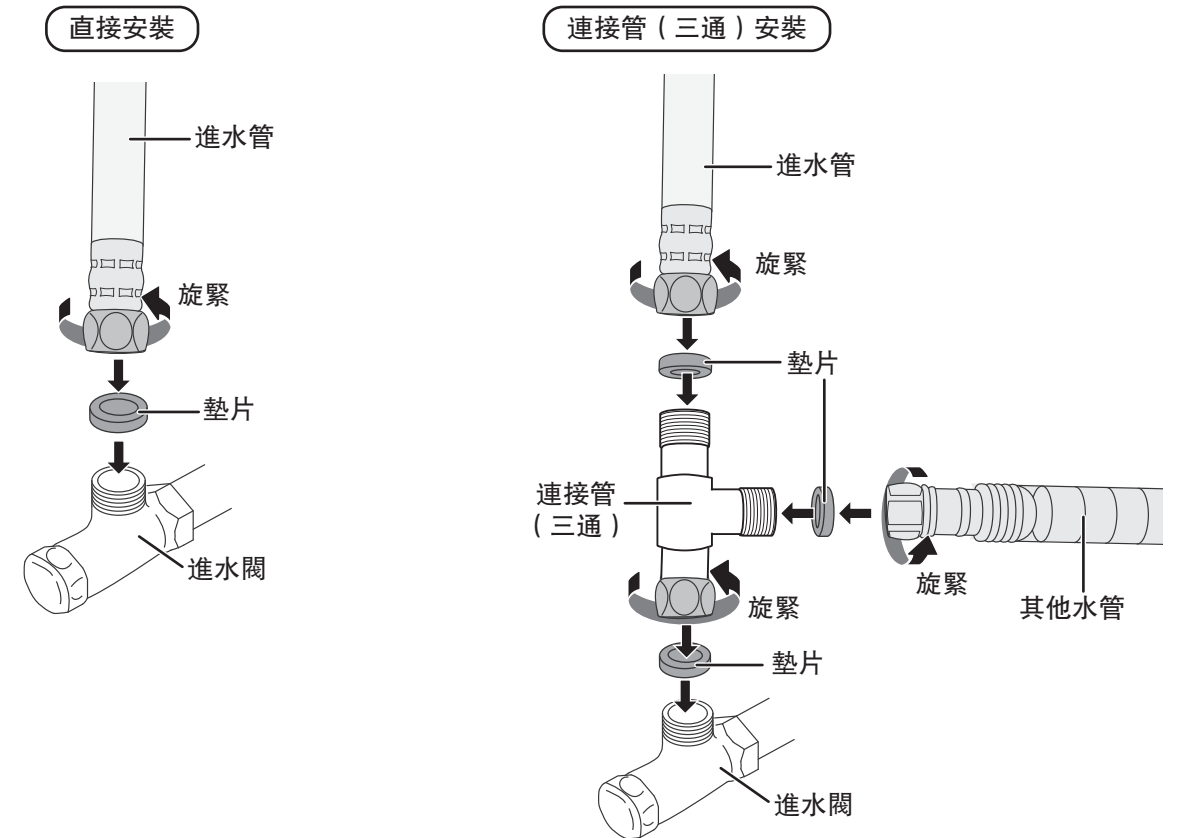
3 安裝進水管到進水閥

進水管穿過鋅盤上的孔，裝上保護套。再按照家中水管情況，選擇直接連接到進水閥或經過連接管 (三通) 與其他水管共同連接到進水閥上。

① 安裝保護套



② 連接到進水閥



要求

- 安裝時請勿漏裝墊片，以免漏水。

建議

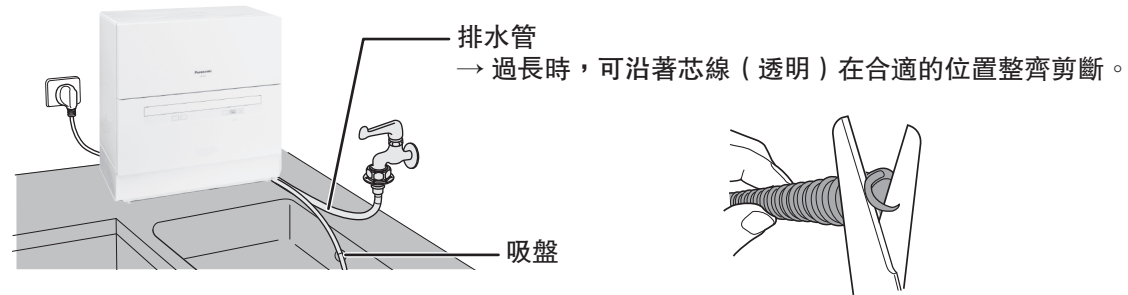
- 若不影響其他水管用水，建議每次操作結束後，關閉進水閥。

■ 自來水壓力的確認事項

- 請在進水壓力 0.05 MPa – 1 MPa 範圍內進行使用。
利用廚房的水龍頭操作時，若自來水管發出異常聲音 (水擊現象)，必須安裝指定的減壓閥。
- 當水龍頭開盡時，進水流量需要達到每分鐘 8 公升以上。
- 請與服務中心聯絡，確認進水壓力及進水流量。

安裝方法 (續)





4 用吸盤固定排水管



5 試機

- 請確認機門、機內所有用來粘貼固定的膠帶、零部件的包裝袋均已全部取下。
- 請確認已經開啓進水閥，插上電源插頭及關上機門。
- 請按照下述次序進行試機。
 - 若暫時因未通水、電而無法試機，必須在通水、通電後進行試機。（請勿用手注水）

■ 試機的方法

- 1 按下 ，開啓電源
Power
- 2 同時長按   3 秒以上
Dry Program
 - 顯示屏「Speedy（超快速）」和「Care（清潔機身）」指示燈亮燈，同時發出「滴滴」2 聲
- 3 按下 ，開始試機
Start/Pause
 - 操作過程中和結束後請進行下述確認事項
 - 試機結束後會自動關閉電源，顯示屏指示燈熄滅

■ 試機の確認

操作中

異常提示：洗碗碟機是否會發出報警聲，顯示屏是否會顯示異常提示（第 HK16 頁）
漏水：進水管、排水管連接處以及其他連接部位應無漏水

結束時

發出 6 聲「嗶」响，電源自動關閉
排水狀況：打開機門，確認機內的水均已排出
停水狀況：在電源關閉的情況下，確認排水口無水排出

提示

- 試機操作結束後，請保持進水閥在打開的狀態。
- 若長時間不使用，請關閉自來水管總掣，以防發生漏水。
- 若可能發生凍結，請進行排水處理。（可能造成進水閥破損而導致漏水）
 - 若出現凍結，請聯絡服務中心

6 檢查

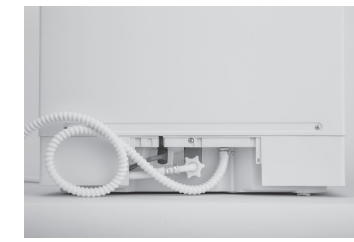
- 請檢查妥當之後才可使用。
 - 洗碗碟機是否裝置在平坦、堅固的水平面上？是否不會搖晃、傾斜？
 - 進水管是否鬆動、晃動、傾斜？
 - 進水管與機體背面的連接處是否漏水？
 - 進水管與進水閥連接處是否漏水？（若漏水，請確認墊片是否漏裝）
 - 排水管是否鬆動、晃動、傾斜？
 - 排水管是否彎折、纏繞、破損？
 - 排水管是否抬高超過 20 cm？

（排水管錯誤裝置示例）

× 彎折



× 纏繞



× 抬高 20 cm



■ 規格

項目	型號	NP-TH1HK
電源		220 V ~ 50 Hz
額定功率		1170 W
體積 (長 × 寬 × 高)		550 mm × 344 mm × 598 mm
淨重		20 kg
用水量		11.7 L (節能程序)
自來水壓力		0.05 MPa – 1 MPa
清洗方式		旋轉噴嘴噴射式、固定噴嘴噴射式
漂洗方式		渦輪式漂洗、噴淋式漂洗
乾碗方式		吹風乾碗、加熱乾碗
程序		Basic (標準)、Intense (高效清洗)、Eco (節能)、Care (清潔機身)、Dry Only (只乾碗)、Speedy (超快速)、Sanitize (高溫除菌)、Delay Start (延遲啟動) 程序 (4 hours (4 小時) 後)、Dry (乾碗) (0.5 h (30 分鐘)、1 h (60 分鐘)、Air (風乾)、Keep (持續乾碗))
標準容量		總計 39 個 飯碗 5 個 茶杯 2 個 玻璃杯 3 個 湯羹 1 個 筷子 10 根 飯羹 1 個 麵碗 3 個 醬料碟 3 個 深碟 2 個 淺碟 4 個 匙羹 5 個

- 即使在電源「關閉」狀態下，進行例行檢測漏水，也將消耗約 0.5 W 的功率。

■ 關於高溫除菌

測試對象	檢測機關	檢測方法	效果	報告編號
洗碗碟機	中國家用電器 檢測所	根據 QB/T 5133-2017	除菌率 大腸埃希氏菌 $\geq 99.9\%$ 金黃色葡萄球菌 $\geq 99.9\%$	WXw-18-30347