

Panasonic®

Operating Instructions Refrigerator

Model Number

NR-BB258P SHK

NR-BB278P SHK



**Please read this user manual before
operating your refrigerator.**

Thank you for purchasing our product and being a Panasonic consumer. All of our products are specially designed to meet your needs.

This appliance is intended to be used in household and similar applications such as :

- Staff kitchen areas in shops, offices, and other working environments;
- Farm houses and by clients in hotels, motels, and other residential type environments;
- Bed and breakfast type environments;
- Catering and similar non-retail applications.

Panasonic Corporation
Made in Indonesia

Panasonic Corporation
印尼製造

Printed in Indonesia
AK-178460

於印尼印刷
AK-178460

Safety Precautions

Warning

This sign means
(It may result in severe injuries or death).

Caution

This sign means
(It may result in injuries or malfunction).



This sign means prohibited action.



This sign means required action.

Warning

When installing...



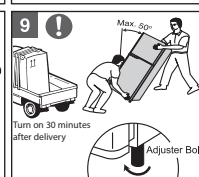
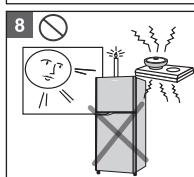
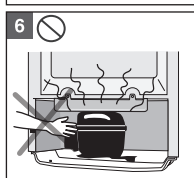
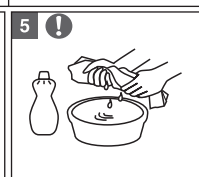
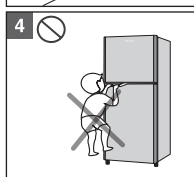
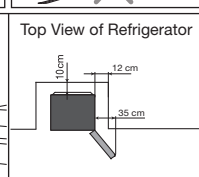
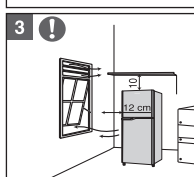
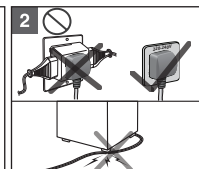
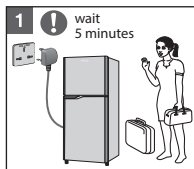
Do not install the product in locations exposed to water.



If the product is placed in a wet floor, attach the grounding cable or earth leakage circuit breaker (ELCB).



For safety it should be checked that the ground connection system in the house has been installed correctly.



Warning

- When the plug is disconnected, leave it for 5 minutes before plug again. if not, the compressor may not work.
- This unit operates in 220-240V 50 Hz. Use a specific electric outlet plug. Do not share with other usage. Avoid the Power Supply Cord from getting pinched or compressed.
- Make sure the refrigerator positioned in a good place. Ensure that refrigerator is provided sufficient space away from the wall, minimum 10 cm from the back, minimum 12 cm from the sides, and minimum 10 cm from the top. Ideal position on the right side should be more than 35 cm, in order to easily for taking accesories in the refrigerator when opening the door.
- Avoid children from swinging on the refrigerator door.
- For maintenance, clean the unit with a damp, soft cloth. DO NOT SPRAY unit with a spray or hose. Do not apply liquids containing benzene, kerosene or various types of concentrated chemicals. When cleaning gasket, make sure to clean gasket again with dry cloth after cleaning it with soap water because a dirty and wet gasket will easily damage resulting in insufficient cooling.

Caution

- Do not touch the compressor and pipes of the refrigerator by hand when the refrigerator operates (injury is likely because of high temperature)
- Avoid exposing the unit to any contact of liquid or high humidity, due to possible danger of fire and electric shock.
- Avoid exposing the unit to direct sunlight or other heat sources (E.g. : candles, stove or lamps).
- When removing the refrigerator, carefully tilt the rear of the refrigerator backwards (max. 50°) before carefully lifting it with two persons. Place it on a hard, level surface to prevent loud vibration and noise. If one of the legs does not touch the floor, adjust the "Adjuster Bolt" at the adjustable leg to stabilize it. When moving the unit put protective sheet at bottom to prevent scratching the floor.

- This appliance is not intended for use by persons (including children) with reduced physical, sensory or mental capabilities, or lack of experience and knowledge, unless they have been given supervision or instruction concerning use of the appliance by a person responsible for their safety.
- Children should be supervised to ensure that they do not play with the appliance.

規格

| 模型 | NR-BB258PSHK | NR-BB278PSHK |
|------------|----------------------------|----------------------------|
| 容量 (升) | 淨容量 : 217 ℓ 總容量 : 246 ℓ | 淨容量 : 236 ℓ 總容量 : 266 ℓ |
| 尺寸 (寬x深x高) | 555 X 627 X 1546 (mm) | 555 X 627 X 1636 (mm) |
| 淨重 | 43 kg | 45 kg |
| 門和櫃絕緣 | 環戊 | |
| 能量源 | 220 - 240V, 50Hz | |
| 能量消耗 | 1.2 A | |
| 冷卻系統 | 間接冷卻 (無霜) | |
| 溫度控制 | 轉動調整 | |
| 製冷劑 | CH2FCF3 (R-134a) | |

注意

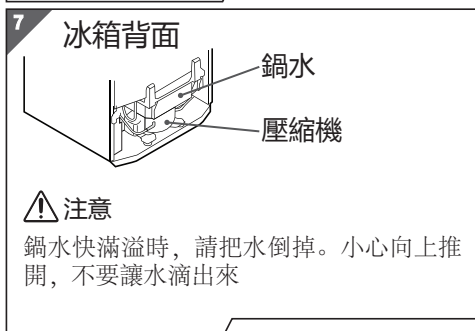
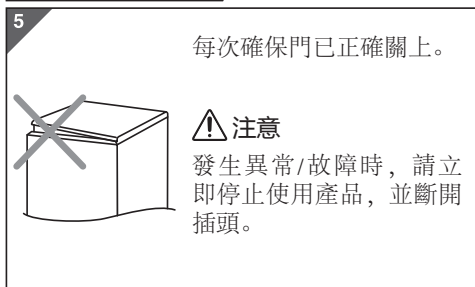
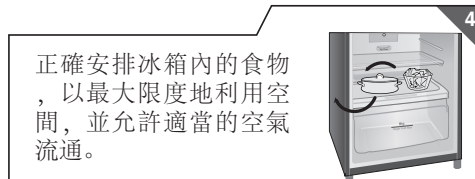
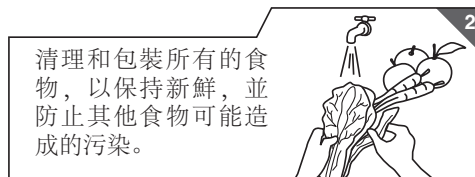
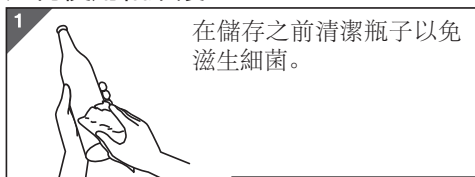
- 保鮮和冷藏箱 可以拿出來，並用於儲存食物或飲料
- 設計和規格如有更改，恕不另行通知
- 如果電源線或LED指示燈損壞，更換請聯繫服務中心

回收此產品時

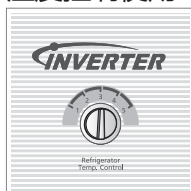
- 在取出冰箱進行回收利用之前，請先移除所有門的密封圈，以防止將孩子鎖上。請聯繫當地相關部門處理和注意環境。
- 操作說明書應交給任何使用或將冰箱轉移到另一地點並交付給回收廠的人員。
- 根據當地法律，環戊烷用於這種冰箱的絕緣。當您丟棄本機時，請以適當的方法將其丟棄，不要通過燃燒處理。請聯繫當地相關部門處理和注意環境。

使用冰箱的提示

如何使用和維護



溫度控制使用



| | 溫度控制 | | 溫度 | |
|----|-------|-----|--------|------|
| | FC | PC | FC | PC |
| 冷 | 冰箱最大 | (1) | -16 °C | 5 °C |
| 較冷 | 中央 | (3) | -18 °C | 3 °C |
| 最冷 | 冷藏室最大 | (5) | -23 °C | 1 °C |

注意：

環境溫度：32 °C

FC：冷藏室

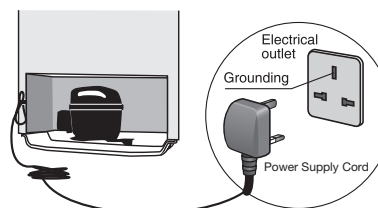
PC：冰箱

- 冷 (1)，保存中份量食物。
- 較冷 (3)，保存大份量食物。
- 最冷 (5)，為了加快製冰 (FC) 和使用低溫儲存食物 (PC)。

Before operating this unit

Grounding

Back View of Refrigerator



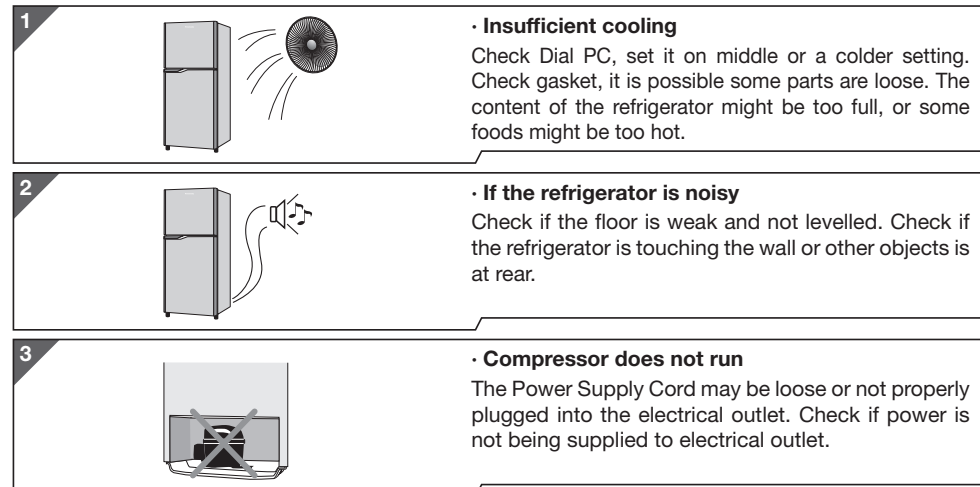
Grounding

Check the grounding of electricity at your home.

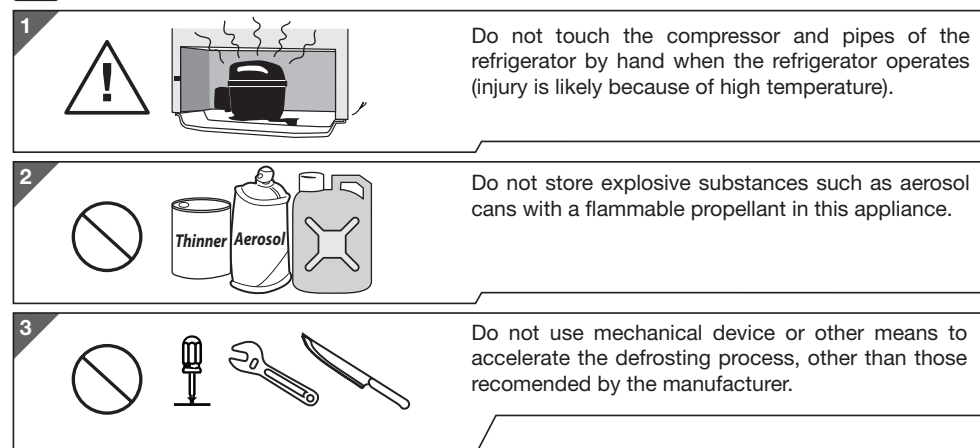
⚠ Caution

You have to connect the refrigerator's ground to the grounding of electricity at your home to prevent electrical shocks.

Symptom and checks



⚠ Caution



Part Identification



1. **Ice Tray,**
To make ice (equipped with ice box below as place to store ice).
2. **Dial FC,**
To control cooling in freezer.
3. **FC Tray,**
To store frozen foods.
4. **FC Case,**
For storing meat, fish, or foods that require frozen.
5. **FC Tray Corner,**
To store frozen foods in small size.
6. **Chilled Case,**
To store meat, fish, or dishes requiring low temperature.
7. **FC Shelf,**
To store foods or beverages require freezing.
8. **Bottle Shelf,**
To store beverages in large bottles.
9. **Egg Shelf & Egg Tray,**
To store eggs (equipped with egg tray).
10. **Free Shelf,**
To store small bottles, drugs, cosmetic, etc.
11. **Tempered Glass Tray,**
To store foods.
12. **PC Dial,**
To control cooling temperature.
13. **Ag Clean,**
To keep food hygiene.
14. **Moist Control,**
Humidity control.
15. **Cover Crisper,**
To close crisper and to store foods.
16. **Crisper,**
To store fruits and vegetables and keeping them fresh.
17. **Adjuster Bolt,**
Adjustable right leg to help keeping the refrigerator level.
18. **Door Gasket,**
To seal the gap with the door.
19. **Small Bottle Shelf,**
To store small bottle, drugs, cosmetic, etc.

零件識別

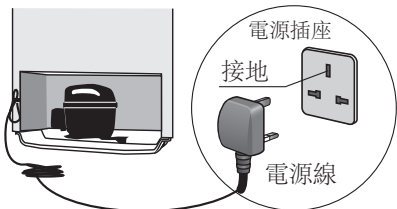


1. **冰盤**
製冰（配備冰格作為存放冰的地方）。
2. **FC調節器**
控制冰格的製冰能力。
3. **FC托盤**
儲存冷凍食品。
4. **FC格**
用於儲存需要冷凍的肉類，魚類或食物。
5. **FC托盤角**
儲存小型冷凍食品。
6. **冷藏箱**
儲存需要低溫的肉類，魚類或菜餚。
7. **FC架**
儲存食物或飲料需要冷凍。
8. **瓶架**
儲存大瓶飲料。
9. **蛋架和蛋托盤**
儲存雞蛋（配有蛋托盤）。
10. **自由貨架**
儲存小瓶，藥品，化妝品等。
11. **鋼化玻璃托盤**
儲存食物。
12. **溫度控制**
控制冷卻溫度。
13. **Ag清潔**
保持食物衛生。
14. **潮濕控制**
濕度控制。
15. **保鮮蓋**
保鮮和儲存食物。
16. **保鮮盒**
儲存水果和蔬菜並保持新鮮。
17. **調節螺栓**
可調節的雪櫃腳，以幫助保持冰箱的水平。
18. **門墊片**
密封與門的差距。
19. **小瓶架，**
儲存小瓶，藥物，化妝品等。

操作本機前

接地電纜

後視圖的冰箱



接地電纜

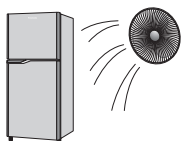
檢查你家裡的電力接地。

⚠ 注意

您必須將冰箱的地面連接到家庭的電源接地處，以防止觸電。

症狀和檢查

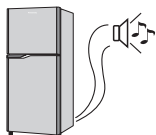
1



· 冷卻不足

檢查溫度控制，設置在中間或較冷的溫度。檢查墊片，可能有些零件鬆動。冰箱的內容可能太滿了，有些食物可能太熱了。

2



· 冰箱嘈雜

檢查地板是否脆弱，不平整。檢查冰箱是否碰到牆壁或其他物體在後面。

3

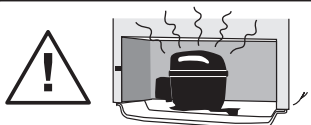


· 壓縮機不運行

電源線可能鬆動或未正確插入電源插座。檢查電源是否未提供電源給插座。

⚠ 注意

1



當冰箱操作時，請勿手動接觸冰箱的壓縮機和管道（^以免高溫傷害）。

2



不要在本產品中存放易燃推進劑等爆炸物質，如氣溶膠罐。

3



除製造商推薦的以外，不要使用機械裝置或其他方式加速除霜過程。

Tips On Using the Refrigerator

How to use & maintain

1



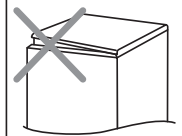
Clean bottles before storing to avoid bacteria.

3



Avoid storing food that is still hot into refrigerator. it will enlarge the refrigeration load.

5



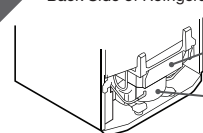
Always ensure the door is closed properly.

⚠ Caution

When any abnormality / failure occurs, stop using the product immediately and disconnect the plug.

7

Back Side of Refrigerator



Pan Water

Compressor

⚠ Caution

Clean Pan Water when it is almost full. To release Pan Water, push upwards and pull CAUTION, do not let the water drip.

Temperature Control Usage

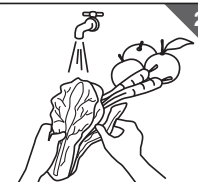


| | Dial Control | | Temperature | |
|---------|--------------|-----|-------------|------|
| | FC | PC | FC | PC |
| Cold | Fridge max | (1) | -16 °C | 5 °C |
| Colder | Center | (3) | -18 °C | 3 °C |
| Coldest | Freezer max | (5) | -23 °C | 1 °C |

- COLD (1), To store food in medium amount.
- COLDER (3), To store food in large amount.
- COLDEST (5), To make ice rapidly (FC) and store foods that require very low temperature (PC).

Note :
Ambient Temperature : 32 °C
FC : Freezer Compartment
PC : Refrigerator

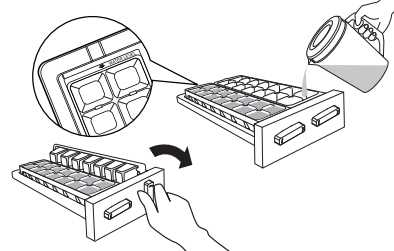
Clean up and wrap all food to keep them fresh and to prevent possible contamination of other food.



Arrange food inside the refrigerator properly for maximum use of space and to allow proper air circulation.



FC Tray Corner can be moved as needed area.



- Pour water into the ice tray to the (full) line, and then place it in the ice tray corner.
- Just twist the ice tray to remove ice cubes from it.

Specification

| MODEL | NR-BB258PSHK | NR-BB278PSHK |
|---------------------------|----------------------------------|----------------------------------|
| Capacity (liters) | Storage : 217 ℓ Gross : 246 ℓ | Storage : 236 ℓ Gross : 266 ℓ |
| Dimension (W x D x H) | 555 X 627 X 1546 (mm) | 555 X 627 X 1636 (mm) |
| Net Weight | 43 kg | 45 kg |
| Door & Cabinet Insulation | Cyclopentane | |
| Power Source | 220 - 240V, 50Hz | |
| Power Consumption | 1.2 A | |
| Cooling System | Indirect Cooling (No Frost) | |
| Temperature Control | Dial Adjustment | |
| Refrigerant | CH2FCF3 (R-134a) | |

⚠ Caution

- Crisper & Chilled Case could be removed and used for storing the food or beverage
- Design and specifications are subject to change without prior notice
- If the supply cord or LED lamp is damaged, for replacement contact your nearest Panasonic service

When recycling this product

1. Before taking the refrigerator to be recycled, please remove all the door opening seal to prevent locking a child in it. Contact your local authorities regarding the proper disposal and environmentally friendly.
2. The operating instructions should be handed over to any person who would use or handle the refrigerator would be transferred to another location and delivered to a recycling plant.
3. Regarding to local laws, cyclopentane is used for insulation of this refrigerator. When you throw away this unit, please discard it by proper method and do not dispose it by burning. Contact your local authorities regarding the proper disposal and environmentally friendly.

安全須知

⚠ 警告

此標誌表示
(這可能會導致嚴重受傷或死亡)。

⚠ 注意

此標誌表示
(這可能會導致受傷或故障)。



此標誌表示禁止的動作。



這個標誌意味著需要採取的行動。

⚠ 警告

安裝時...



請勿將產品安裝在暴露於水中的位置。



如果產品放置在濕地板上，請連接接地線或漏電斷路器 (ELCB)。



為了安全起見，應檢查房屋內的接地系統是否安裝正確。

⚠ 警告

1. 當插頭斷開連接時，請將其放置5分鐘再插上。否則，壓縮機可能停止運作。
2. 本機額定電壓為220-240V 50 Hz。使用特定的電源插頭。不要作其他用法。避免電源線被擠壓或夾住。
3. 確保冰箱位於一個適當地方。確保冰箱距離牆壁足夠的空間，距背部至少10厘米，距離側面至少12厘米，距離頂部最小為10厘米。右側的理想位置應超過35厘米，以便打開門時輕鬆拿起冰箱中的配件。

4. 避免兒童在冰箱門上攀爬。

5. 請用潮濕的軟布清潔本機。請勿用噴霧或軟管噴塗雪櫃。不要塗含有苯，煤油或各種濃縮化學品的液體。清洗墊圈時，請用肥皂水清潔乾淨的墊片再次清潔墊圈，因為髒污和濕潤的墊圈容易損壞，導致冷卻不足。

⚠ 注意

6. 當冰箱操作時，請勿手動接觸冰箱的壓縮機和管道（以免高溫傷害）。
7. 由於可能有火災和觸電危險，請避免將設備暴露在液體或高濕度的任何接觸處。
8. 避免將本機暴露在陽光直射或其他熱源（蠟燭，火爐或燈泡）下。
9. 卸下冰箱時，請小心地將冰箱後部向後傾斜（最大不要超過50°），然後小心地兩人合力抬起。將其放置在堅硬的水平表面上，以防止大的振動和噪音。如果其中一隻腳沒有接觸到地板，請調整可調節底部的“調節螺栓”以使其穩定。移動裝置時，將保護板放在底部，以防止刮地板。

- 除非由安全監護人就本雪櫃進行監督或指導，否則身體、感官或智力有功能障礙者，或者缺乏相關經驗和知識的人士(包括兒童)請勿使用此雪櫃。

- 應對兒童進行監督，以確保他們不會玩此雪櫃。

