

# Panasonic

ENGLISH  
OPERATING INSTRUCTIONS

ROOM AIR CONDITIONER  
**CW-XN1219VA**

ACXF55-23160



Thank you for buying Panasonic Air Conditioner

- WARNING** This symbol shows that this equipment uses a flammable refrigerant. If the refrigerant is leaked, together with an external ignition source, there is a possibility of ignition.
- CAUTION** This symbol shows that the Operating Instructions should be read carefully.
- CAUTION** This symbol shows that service personnel should be handling this equipment with reference to the Technical Manual.
- CAUTION** This symbol shows that there is information included in the Operating Instructions and/or Installation Instructions.

Before operating the unit, read these operating instructions thoroughly and keep them for future reference.

## 1 SAFETY PRECAUTIONS

Please observe these following safety precautions when using your air conditioner. Failure or negligence in observing these safety precautions could cause fire, electrical shock or personal injury.

- WARNING** This sign warns of risk of death or serious injury.
- CAUTION** This sign warns of risk of injury or damage to property.
- This symbol (with a white background) denotes an action that is **PROHIBITED**.
- These symbols (with a green background) denote actions that are **COMPULSORY**.

### INSTALLATION PRECAUTION

- WARNING** Do not install, remove and reinstall the unit yourself. Improper installation may cause leakage, electric shock or fire. Please engage an authorized dealer or specialist for the installation work.
- Do not add or replace refrigerant other than the specified type. It may cause product damage, burst and injury. If the supply cord is damaged, it must be replaced by the manufacturer, its service agent or similar qualified persons in order to avoid hazard.
- CAUTION** The appliance shall be stored in a room without continuously operating ignition sources (for example: open flames, an operating gas appliance or an operating electric heater)
- In cases that require mechanical ventilation, ventilation openings shall be kept clear of obstruction.
- Ventilate any enclosed areas when installing or testing the refrigeration system. Escaped refrigerant gas, on contact with fire or heat, can produce dangerously toxic gas.
- Confirm after installation that no refrigerant gas is leaking. If the gas comes in contact with a burning stove, gas water heater, electric room heater or other heat source, it can cause the generation of toxic gas.
- The room air conditioner must be earthed. Improper grounding could cause electric shock.
- Do not install the unit in a place where there are explosive gas leaks. Gas leaks near the unit could cause fire.
- Ensure that the drainage piping is connected properly. Otherwise water will leak out.

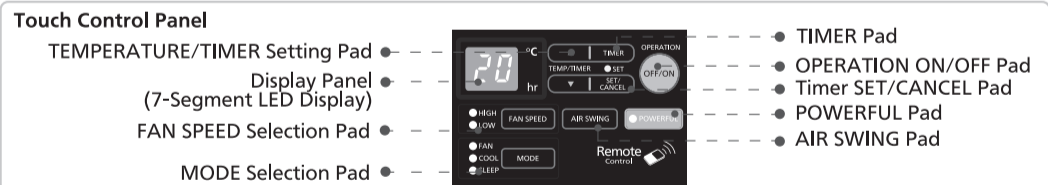
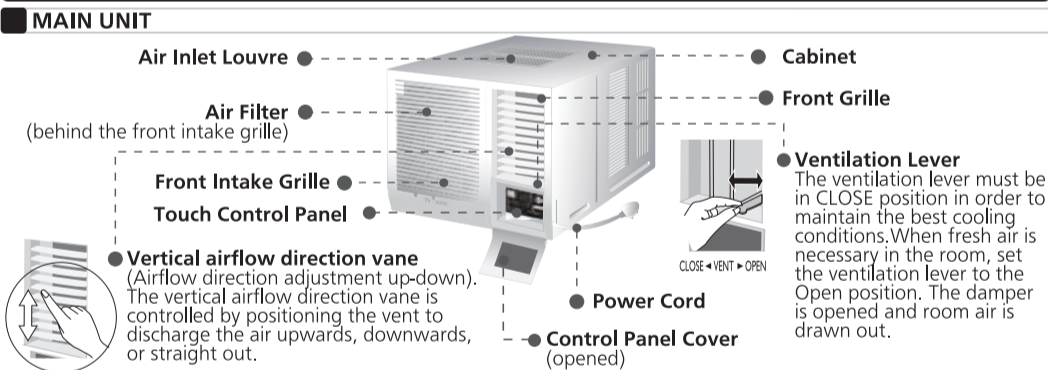


Risk of fire / Flammable materials

### OPERATION PRECAUTION

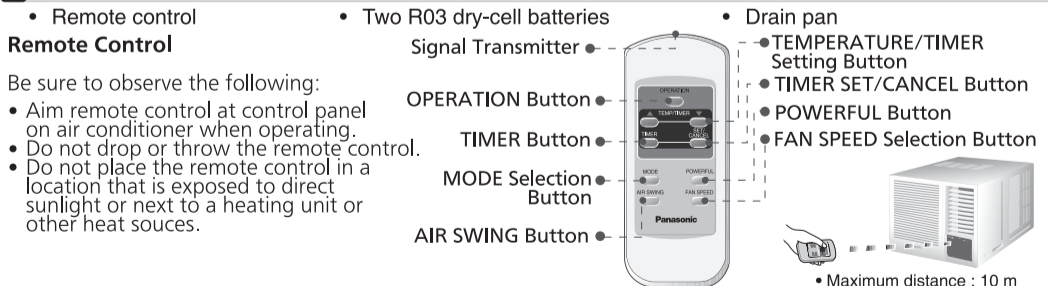
- WARNING** This sign warns of risk of death or serious injury.
  - Do not modify the length of power cord or use an extension cord.
  - Do not touch or operate with wet hands.
  - Do not modify or damage the cord.
  - Do not turn on the unit by inserting the power plug.
  - Do not switch off the unit by pulling out the power plug.
  - Avoid an extended period of direct airflow.
  - Do not insert your fingers or other objects into the unit, rotating parts may cause injury.
  - Do not try to repair the unit yourself.
- CAUTION** This sign warns of risk of injury or damage to property.
  - Do not use the unit for other purposes, than its intended use.
  - Do not remove the power plug by pulling the cord.
  - Do not block the air intake and outlet vanes.
  - Do not splash or direct water at the unit.
  - Do not expose the unit to direct sunlight during operation.
  - Do not operate the unit without the air filter installed or when the front intake grille has been removed.
  - Do not place any objects on the unit.
  - Do not operate any combustion equipment near the unit's air flow area.
  - Do not sit or step on the unit, you may fall down accidentally.
  - Do not touch the sharp aluminium fin, sharp parts may cause injury.
  - Do not use means to accelerate the defrosting process or to clean, other than those recommended by manufacturer.
  - Switch off the breaker and unplug the unit from the socket if the unit will not be operated for a long period.
  - Pay attention to any damages on the unit caused by extensive usage.
  - Ventilate the room occasionally where the unit is installed.
  - Unplug the power cord when cleaning the unit.

## 2 PARTS IDENTIFICATION



TYPES OF SIGNAL SOUND - One long "BEEP" and one short "BEEP". (Sound from the main unit.)

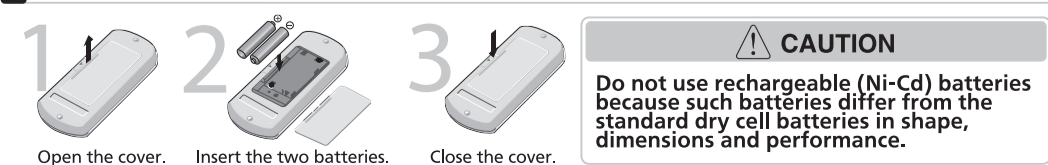
### ACCESSORIES



## 3 PREPARATION BEFORE OPERATING

- WARNING** Ensure that the power plug is securely inserted. A loose plug may cause a fire or an electric shock.
- NOTES:**
  - If the unit is not going to be used for an extended period of time, remove the power plug. Otherwise, approximately 2.5W of electricity will be used even if the unit has been turned off using the remote control.
  - If operation is stopped, and to be restarted immediately, the unit will resume operation only after 3 minutes.

### HOW TO INSERT BATTERIES



### ABOUT THE BATTERIES

- The batteries can be used for approximately one year.
- Be sure to replace the batteries with two new identical batteries.
- Remove the batteries if the air conditioner will not be used for an extended period of time.

### OPERATION CONDITIONS

Use the air conditioner under the following conditions:

- Operating temperature range.
- Continuous operation at over 90% high humidity may create condensation and result in waterdrops on the intake and outlet vanes.

	Indoor side		Outdoor side	
	D.B.T.	W.B.T.	D.B.T.	W.B.T.
Max. Temperature	32	23	43	26
Min. Temperature	16	11	16	11

NOTE: Humidity may exceed 90%  
D.B.T.: Dry Bulb Temperature  
W.B.T.: Wet Bulb Temperature

## 4 AIR CONDITIONER INSTALLATION

### CHOOSING THE INSTALLATION LOCATION

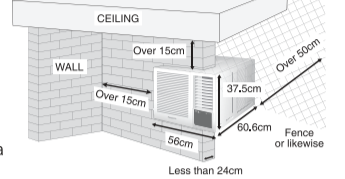
- When installing, use the nearest power outlet. Make sure the power outlet is easy to reach so you can quickly disconnect your air conditioner in case of emergency.
- Ensure that the air conditioner is well supported, securely fastened, easily reachable and not obstructed.
- Avoid location with: salty or sulphurous air, draughts, dampness and flammable gas.
- If you install the drainage system, be sure to channel the condensed water to a suitable location.
- Covers, obstructions and unsteady support may cause excessive operating noise and vibration.
- The rear end of the air conditioner is splash proof. You don't need to shield or cover it.
- Installation and maintenance should be done by competent person.



### PREPARATIONS BEFORE INSTALLATION

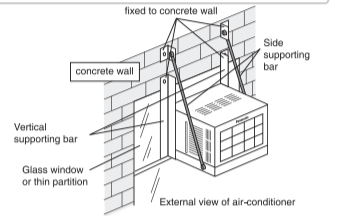
#### Dimension

- There should not be any obstacles surrounding the unit.
- Prepare an installation hole slightly bigger than the cabinet size.
- Left and right side of the unit should be at least 15 cm away from the wall.
- The minimum installation height is 75cm. (Based on IEC 60335-2-40, there is no restriction for the minimum installation floor area since the refrigerant charges is less than 1.224kg.)



### CAUTION POINT DURING INSTALLATION

When installing air conditioner at glass window or thin partition, fix the vertical and side supporting bar to the concrete wall in order to support the weight of the air-conditioner and reduce the vibration that is being transferred to the glass window or thin partition.



- This can minimize the noise problem caused by improper installation.
- Proposed to use 1/8" x 1-11/4" "angle-aluminium for installation frame and side supporting bar.

### INSTALLATION PROCEDURES

- Remove the rear cabinet screws and chassis locking bracket from the cabinet. Save for later use.
- Slide the chassis out from the cabinet.
- Place the cabinet into the installation hole. Tilt down for better drainage (max. 10mm). Secure it with wood screws or nails.
- Before installation, please remove the Shipping Block at the front side of unit and shock absorber at the compressor top, accumulator, and receiver. Flament tape fixed to the compressor and copper tube, also remove connecting bar. (refer to caution label)
- Slide the chassis into the cabinet.
- Lock the chassis to the cabinet reusing the chassis locking bracket.
- Depending upon the location of AC outlet, route the AC cord to either left or right side before installing the front grille.
- Attach the front grille to the cabinet and fasten it with a screw.
- Attach air filter to the front grille. (see anti-bacterial filter installation instructions included in this package)
- Insert the hook of string in the hole provision of intake grille. Slide the intake grille slightly to the right to reattach the tabs and then push it down to close tight.

### REMOVAL OF FRONT GRILLE

- Remove the front intake grille. Pull up the front intake grille about 90° and slide it slightly to the left to unhook the tabs. Unhook string from intake grille.
- Remove the air filter. Tilt up and pull out the air filter by the holder.
- Remove the front grille.
  - Remove the screw on the front grille.
  - At the bottom right side of the front grille, press inward on the cabinet near the power cord, and pull the grille outward to the right until right tab releases.
  - At the bottom left side, push inward on the cabinet and pull the grille outward to the left to release the left tab. Do not pull the bottom edge towards to you for more than 3 inches to prevent the two top tabs from damage.
  - Slide the front grille upwards to loosen the two top tabs from slots at the top of the cabinet.

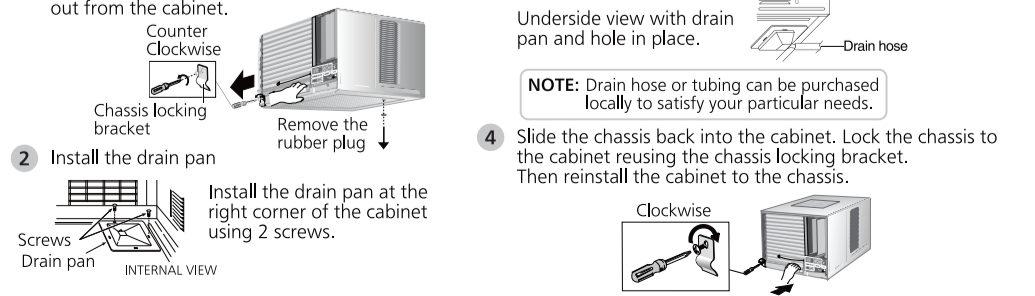
### ELECTRIC WORK

- Always use at the rated voltage and with a specific air conditioning circuit.
- This equipment must be earthed and strongly recommended to be installed with Earth Leakage Circuit Breaker (ELCB) or Residual Current Device (RCD). Otherwise, it may cause electric shock or fire in case of malfunction.
- A 16 Ampere time delay fuse or circuit breaker is required.
- Nominal cross sectional area of power supply wire must be 3 core x 1.5 mm<sup>2</sup> or above.
- The power supply must be from an independent circuit.
- All electrical installations must be made in accordance with local wiring and safety regulation wherever applicable.
- There must be a double pole switch with a minimum of 3.5 mm contact gap in the fixed installation circuit.
- Please engage an authorized dealer or specialist for the installation work.

### CONDENSED WATER DRAINAGE

This air conditioner employs a "Slinger-Up System" which is designed to splash the condensed water on the condenser coil for maximum cooling efficiency, thus producing a splashing sound. If the splashing sound annoys you, you can provide an outside drainage by using the following the procedure which may, cause a small loss of performance.

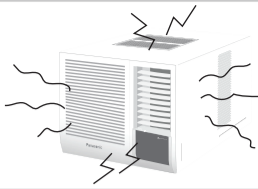
- Remove the rubber plug and chassis locking bracket from the cabinet. Then slides the chassis out from the cabinet.
- Install the drain pan. Install the drain pan at the right corner of the cabinet using 2 screws.
- Connect a drain hose. Fit the drain hose to the drain pan.
- Slide the chassis back into the cabinet. Lock the chassis to the cabinet reusing the chassis locking bracket. Then reinstall the cabinet to the chassis.





## NOISE CONSIDERATION

- Select an installation location that can support the weight of the air conditioner and one that will not cause increased operating noise and vibration.
- Ensure that when installed, airflow and noise from the rear side of the unit (outdoor) do not disturb neighbouring elements.
- Obstacles placed in front of the air outlet on the rear side of the unit (outdoor), or covers placed over it will cause excessive noise and deterioration in performance.



## TRANSFERRING

- Repositioning or transfer of the air conditioner due to renovation or moving requires an additional service charge. Please consult your dealer before moving.

## 5 AIR CONDITIONER OPERATION

### OPERATING THE UNIT

**OPERATION**

Start operation by pressing OPERATION. The operation will turn on and the display panel will light up. To stop the operation, press the OPERATION again. The unit will stop operating and the display panel light will turn off.

### SETTING DISPLAY TEMPERATURE

**TEMP/TIMER**

Press TEMP/TIMER ▲ or ▼ to set the display temperature. The temperature can be set between 16°C and 30°C. **Recommended temperature: 26°C ~ 28°C**

**NOTES:**

- The latest temperature setting will be memorized and will appear on the display the next time it's turned on.
- The display temperature selection is for display purpose only and does not indicate actual room setting temperatures. Your room temperature may not necessarily match the displayed temperature.

### SELECTING OPERATION MODE

**MODE**

Press MODE to select the desired operation. The indicator will light up and a "beep" sound will indicate changing setting.

**COOL mode**  
To set room temperature to your preference of cooling comfort.

**FAN mode**  
To provide air circulation without cooling the room. During Fan operation, temperature setting cannot be selected.

**SLEEP mode**  
To provide energy saving and comfort during Sleep.

### SELECTING FAN SPEED

**FAN SPEED**

Press FAN SPEED to choose the speed level of the fan. The indicator will light up and the "beep" sound will indicate changing setting.

**NOTE:**

- The latest fan speed setting will be memorized and the indicator will light up the next time the unit is turned on.

### ADJUSTING HORIZONTAL AIRFLOW DIRECTION

**AIR SWING**

Press to select AIR SWING. The air circulation will automatically move the horizontal louvres left and right for better air distribution around the room.

**NOTE:**  
Using your hands to adjust the direction may cause the louvres to malfunction. If this happens, stop operation immediately and restart.

**NOTE:**  
Vertical adjustment of the airflow direction is done manually.

### POWERFUL OPERATION

**POWERFUL**

To obtain set temperature quickly:

- Press POWERFUL
- To cancel this operation, press once more.
- After POWERFUL is selected, the operation will go on for 15 minutes, after that it will shift back to previous operation mode.

**NOTE:**  
Sound emitted by the unit will be increased during POWERFUL operation due to increased of air volume.

Cooling	-3°C lower than set temperature (lowest limit 16°C)	Super High Fan Speed
---------	---	----------------------

### SETTING THE OFF TIMER

**TIMER**

When the air conditioner in operation: Press the TIMER button. The SET/CANCEL indicator light will blink awaiting for setting. Press the TEMP/TIMER ▲ or ▼ button until preferred hour of operation is reached. Press the SET/CANCEL button to complete the setting. At this time, the SET/CANCEL indicator light is steady instead of blinking.

**NOTE:**  
The hour reading will change back to the set temperature reading after 5 seconds. (You can also revert to temperature setting immediately by pressing the TEMP/TIMER ▲ or ▼ buttons again.)

### CHECK TIMER SETTING DURING OFF TIMER

**TIMER**

Press the TIMER button to check the remaining programmed timer setting. The figure will be displayed for 5 seconds then will automatically switch back to temperature setting.

**NOTE:**  
The timer figure will change according to the time remaining (If you set it turn off 3 hours from now, the timer will show "2" at an hour later.)

### CANCEL OFF TIMER SETTING

**SET/CANCEL**

Press the SET/CANCEL button to cancel the timer setting. The SET/CANCEL indicator light will turn off. However the temperature remains displayed.

### SLEEP MODE SETTING

The air conditioner will gradually increase the temperature during sleeping time. When the set room temperature is reached, it will maintain the set temperature for an hour and will shift 1°C up. The 1°C up will be maintained for an hour and then will shift 1°C up for a total of 2°C up will be maintained until the set time is consumed and then the unit will turn off automatically. **NOTE:** The automatic shift of temperature (Max 2°C) is not indicated on the display panel.

**MODE**

Press MODE button to select Sleep mode. SLEEP LED lights on. SET LED blinking awaiting for confirmation. 7-SEGMENT LED DISPLAY show the latest set duration time or the default time (8 hours) if the duration has not been set.

**Note:** If the TIMER button is pressed after selecting SLEEP, there will be no change or effect.

**TEMP/TIMER**

**NOTE:** If no other operation is performed within 10 seconds, sleep mode will cancel out and automatically return to COOL mode. SET LED stops blinking and COOL LED lights on. 7-SEGMENT LED display will show the temperature display.

**Note:** The hour display will change to temperature display 5 seconds after SET/CANCEL button was pressed. Or press ▲ or ▼ buttons, the hour display will change to temperature immediately.

**TEMP/TIMER**

Press TEMP/TIMER ▲ or ▼ to select the desired hour. (Range is 4 to 12 hours).

**SET/CANCEL**

Press SET/CANCEL button to complete setting. SET LED stops blinking and lights on. Sleep mode is set.

**SET/CANCEL**

**NOTE:** The hour display will change to temperature display 5 seconds after the SET/CANCEL button was pressed. Or press ▲ or ▼ buttons, the hour display will change to temperature immediately.

### CHECK THE REMAINING HOUR DURING SLEEP OPERATION

**TIMER**

Press the TIMER button to check the remaining hour of Sleep mode operation. The hour is displayed for 5 seconds then will automatically switch back to temperature display. If the set duration time is '7', it will display '6', one hour after Sleep mode starts to operate.

### CANCEL THE REMAINING HOUR DURING SLEEP OPERATION

**SET/CANCEL**

Press SET/CANCEL button. Sleep mode will cancel out and automatically return to Cool mode. SET LED and SLEEP LED lights off. COOL LED lights on. Or press MODE.

**NOTE:** After the unit stops from Sleep Mode operation or after the unit resumes operating after a brownout, it will automatically reset to Cool Mode at the time the unit was turned on.

## SETTING THE ON TIMER

**TIMER**

Press the TIMER button. The TIMER indicator light will blink to await for setting. Press the TEMP/TIMER ▲ or ▼ button until the desired hour for operation is reached. Press the SET/CANCEL button to complete the setting. At this time, the TIMER indicator light is steady instead of blinking. The display will show the remaining hour to the start of the operation (if you set to turn on 3 hours from now, the timer will show "2" at an hour later). When set time is reached, the air conditioner starts the operation under the previous setting mode and the TIMER indicator will light off. Now, the previous set mode and the fan speed will light up. Simultaneously, the display will show the setting temperature.

### CHECK TEMPERATURE/MODE/FAN SPEED SETTING DURING ON TIMER

**TIMER**

Press the TIMER button and the previous temperature setting will be shown. Simultaneously, MODE and FAN SPEED indicator will light up. This indication will last for 5 seconds, and then the display will show the remaining time. MODE and FAN SPEED indicator will turn on.

### CHANGE TEMPERATURE/MODE/FAN SPEED SETTING DURING ON TIMER

**SET/CANCEL**

Press the SET/CANCEL button to cancel the timer setting. Press the OPERATION. Set the desired mode and the fan speed. Then press OPERATION button to stop operation. Start the TIMER setting again by repeating the step from the "Setting the on timer" procedures.

**NOTE:** ON Timer will work only for COOL Mode and FAN Mode

### CANCEL TIMER SETTING DURING ON TIMER

**SET/CANCEL**

Press the SET/CANCEL button to cancel the timer setting. The SET/CANCEL indicator light will turn off. To operate the air conditioner before reaching the set timer:

- Press the SET/CANCEL to cancel the timer.
- Press the OPERATION button to turn on the unit.

## 6 HELPFUL INFORMATION & ENERGY SAVING HINTS

### HELPFUL INFORMATION

#### Auto Restart Control

- Operation will automatically resume under the previous operation mode.
- If the unit was set to TIMER mode or SLEEP mode, operation will not resume automatically.

#### Timer Setting

- When power failure occurs, the timer setting is cancelled. Once power returns, reset timer.

#### ENERGY SAVING HINTS

- Setting the temperature 1°C higher save 10% electricity costs.
- Clean the air filter every 2 weeks. Regular cleaning of the air filter preserves efficiency.
- Keeping openings closed keeps cool air in and hot air out.
- Avoid direct sunlight and heat
- For health reason do not overcool your room.
- Your air conditioner's cooling capacity should match your room size.

## 7 CARE AND MAINTENANCE

**WARNING**

Always turn off the air conditioner and the main power supply before cleaning the unit. Switch off the power supply if the unit is not going to be used for a long period of time.

- Clean the cabinet, front grille with mild soap or detergent and lukewarm water.
  - The front intake grille can be easily removed for cleaning purposes (refer to **Remove the front intake grille** procedures). Gently wash it with water and a sponge.
  - The filter can be easily cleaned using a vacuum cleaner. Vacuum the front of the filter and then wash the rear with water. If it is badly spoiled, wash with a mild household detergent.
  - Do not clean with benzene, thinner, scouring powder or cloth soaked in caustic chemicals.
  - If the unit is extremely dirty, heat transfer is less efficient and the unit may not cool effectively. Contact Shun Hing Electric Service Centre Ltd. for an annual check. (Annual check is not covered by the warranty.)
  - If the air filter becomes clogged with dust, the cooling capacity will drop, and 6% of the electricity used to operate the air conditioner will be wasted.
- NOTE:** Do not dry the front panel or the air filter in direct sunlight. (Exposure to direct sunlight may discolour or deform the panel.)

### PRE-SEASON INSPECTION

#### Is the discharged air cold?

After 15 minutes of operation, it is normal for the temperature difference between intake and outlet air to be more than 8°C for cooling.

#### Are the air intake and outlet vanes of the indoor and outdoor side obstructed?

#### Are the remote control batteries weak?

### RECOMMENDED INSPECTION

Usage over several seasons will reduce performance as the unit becomes dirty. A dirty unit may produce foul odours and dust may clog the dehumidifying drainage. Seasonal inspection is recommended in addition to regular cleaning. Consult Shun Hing Electric Service Centre Ltd.,

## 8 BEFORE CALLING FOR SERVICE

**BEFORE**

Check the following points before calling for repairs or service. If the malfunction persists, please contact Shun Hing Electric Service Centre Ltd.,

### Condition 1 If the unit is too noisy during operation.

- The following sounds are normal during operation:
- A low humming sound indicating that the unit is operating.
  - A soft clicking sound when the compressor turns on and off.
  - A flowing sound due to circulation of the refrigerant when the compressor is turned on.
  - A splashing sound indicating condensation in the condenser coil.

If you hear other noises, please consult Shun Hing Electric Service Centre Ltd.,

### Condition 2 If the unit does not operate.

- The main power cord is not plugged in.
- The main circuit breaker has tripped.
- Remote control batteries are weak.

### Condition 3 If the unit does not cool properly.

- The room is too big for the unit's capacity.
- The ventilation lever is set to OPEN
- The air circulation is impeded by curtains or furniture.
- After 15 minutes of operation, it is normal for the temperature difference between intake and outlet air to be more than 8°C for cooling.

### Condition 4 If water drips off the rear of the unit.

- Humidity is high.
- Condensed water is overflowing.
- To rectify the problem, mount an optional drain pan to the unit.

### Condition 5 If water drips inside the room.

- The unit is tilted inward. To rectify this, tilt the unit slightly outward.
- Mount the optional drain pan if you prefer.
- The drain pan may be blocked.

**To call Shun Hing Electric Service Centre Ltd. IMMEDIATELY Turn off the power and contact Shun Hing Electric Service Centre Ltd. as soon as any of the following events occur.**

- The circuit breaker frequently trips or the fuse blows regularly.
- If water or foreign objects have accidentally entered the air conditioner.
- If there is abnormal sound during operation.

### NOTE:

- The enclosure opposing the room side is splash proof (IPX4).
- Do not install this appliance in a laundry room or other locations where water may drip from the ceiling, etc.
- If the supply cord is damaged or need to be replaced, it must be replaced by the manufacturer or its service agent or a similarly qualified person in order to avoid a hazard.

**Information for Users on Collection and Disposal of Old Equipment and used Batteries**

**[Information on Disposal in other Countries outside the European Union]**  
These symbols are only valid in the European Union. If you wish to discard these items, please contact your local authorities or dealer and ask for the correct method of disposal.

**Note for the battery symbol (bottom two symbol examples):**  
This symbol might be used in combination with a chemical symbol. In this case it complies with the requirement set by the Directive for the chemical involved.

**Panasonic Corporation**  
Website: <http://www.panasonic.com>

Printed in Philippines

OFTH0811-00

ACXF55-23160