



Panasonic®

Operating Instructions Refrigerator

For Household Use

Model No.: NR-BV360Q, NR-BV320Q, NR-BV280Q



Contents

• Safety precautions.....	2
• Usage precautions	4
• Installation	6
• Parts identification.....	7
• ECONAVI operation	8
• Temperature control	8
• Temperature control (Fine adjustment mode)	9
• Quick Freezing	9
• Prime Fresh+	10
• Prime Fresh room.....	10
• Food storage in the Freezer room.....	10
• Usage tips	11
• How to clean the refrigerator	12
• Troubleshooting.....	14
• Specifications	15

■ NON-CFC

This unit uses totally **NON-CFC MATERIALS** both for refrigerant (R600a) and for insulation (Cyclo-Pentane). So, this refrigerator does not damage the Earth's ozone layer.

Thank you for purchasing the Panasonic product.

- Please read these instructions carefully and follow safety precautions on page 2-5 before using this product.
- Please make sure the date and name of store of purchase are stamped in warranty card and keep it with this operating instructions.

HK

ARAH1E202361
P0820-1072
Printed in Vietnam

Safety precautions

Please be sure to follow these instructions.



WARNING

This sign means: It may lead to a serious injury or death.



These signs mean prohibited action.



This sign means required action.



This sign means the appliance must be earthed to prevent electric shock.



CAUTION

This sign means: It may result in injury or property damage.



iso-butane

Risk of fire / flammable materials

Otherwise it may
cause a fire, injury,
electrical shock.



WARNING

For power plug and cord...



- **Do not** plug or unplug with wet hands.
- **Do not** let the cord or plug be damaged.



- Disconnect power plug when cleaning.
- Plug into a wall outlet of the rated voltage on its own with the rated current and insert plug fully.
- Reserve one socket for the refrigerator only. Avoid connecting many appliances to the same socket and unroll through the length of cord.
- Remove dust periodically from the power plug.
- If the supply cord is damaged, it must be replaced by the manufacturer, its service agent or similarly qualified persons in order to avoid a hazard.
- If you detect burning smell, disconnect the power plug and ventilate the kitchen.
- **Stop** using the refrigerator and unplug the unit immediately if there is an abnormality or failure. Abnormality and failure examples:
 - Power cord or plug is abnormally hot.
 - Power cord is deeply cut or deformed.
 - There is burning smell.
 - You can feel tingling electricity.

When recycling the product...



- Before taking the refrigerator to be recycled, please remove all the door opening seal to prevent locking a child in it.
- The warning labels mentioned above should be kept throughout the life of the refrigerator.
- The operating instructions should be handed over to any person who would use or handle the refrigerator whenever the refrigerator would be transferred to another location and delivered to a recycling plant.
- Regarding to local laws, Cyclo-Pentane is used for insulation of this refrigerator. When you throw away this unit, please discard it by proper method and do not dispose it by burning.

Otherwise it may
cause a fire, injury,
electrical shock.



WARNING

When using...



- **Do not** damage the cooling circuit (piping on the back).
- **Do not** touch the compressor and pipes, because of high temperature, that there is a risk of burn injury.
- **Do not** let any children hang onto the refrigerator's door, it may overturn to the kid.
- **Do not** place any water container on the top of the refrigerator in case the spilling water causes electrical shock or combustion.
- **Do not** store explosive substances such as aerosol cans with a flammable propellant in this appliance.



- This appliance is not intended for use by persons (including children) with reduced physical, sensory or mental capabilities, or lack of experience and knowledge, unless they have been given supervision or instruction concerning use of the appliance by a person responsible for their safety.
- Children should be supervised to ensure that they do not play with the appliance.

In case of emergency...



R600a
iso-butane



- Maintenance work only be carried out at workshop by well-trained maintenance worker.
- **Do not** store explosive substances such as aerosol cans with a flammable propellant and chemicals or scientific specimens in the appliance.
- **Do not** use electrical appliances such as a deodorizer in the refrigerator. Leaked refrigerant may catch fire from a spark of the electrical contacts and may cause an explosion.
- **Do not** use electrical appliances inside the food storage compartments of the appliance, unless they are of the type recommended by the manufacturer.
- **Do not** disassemble, repair or modify the refrigerator by yourself. If you want to repair the refrigerator, please consult your dealer or authorized service center.
- **Do not** use mechanical device or other means to accelerate the defrosting process, other than those recommended by the manufacturer.



When installing...



- Fix the refrigerator to avoid danger due to unbalance.
- When positioning the appliance, ensure the supply cord is not trapped or damaged.



- Ensure that the refrigerator is plugged into an earthed mains socket.

Otherwise it may cause
injury, accidents.

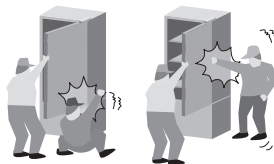


CAUTION

When opening/closing the doors...



- While opening the refrigerator, be careful not to pinch other one's hand holding the door.
- Mind the gap between the doors. They may nip your hand while closing the door.



When storing food...



- **Do not** freeze glass bottles, that there is a risk of injury. (If the liquid in a glass bottle is frozen, then the bottle may break and you may be injured.)
- **Do not** add a high impact on glass trays. (Otherwise those glass trays may break and you may be injured.)



When moving the refrigerator...



- Hold the refrigerator tightly when transporting.
- Apply protective covering, etc. to floors with a fragile surface.

Usage precautions

When opening/closing the doors...

- **Do not** refrigerate items which are bigger than tray or shelf, as the door will not close completely causing leakage of cool air.
- **Do not** open refrigerator frequently or leave it open for long time in order to prevent water dripping inside and waste energy.
- Frequently check the door opening seal, it must be closed to the refrigerator's body completely.

When cleaning...

- **Do not** clean the refrigerator with chemical substance or liquid. It will cause damage and have corrosion on the surface.
- Clean the pan water evap located over the compressor at the back of the refrigerator every three months to prevent the odour generated from humidity.



Usage precautions

When using...

- When the plug is disconnected, leave it for 5 minutes before plugging again. If not, the compressor may not work.
- Adjust the temperature according to the actual operating condition for energy saving.
- The humidity inside the fresh case may condense so wipe it with a cloth periodically. Clean the fresh case once a month.
- If you will not be at home for several days and there are nothing refrigerated in the refrigerator, the plug should be disconnected for energy saving.
- The outside wall of refrigerator cabinet may sometimes get warm, especially just after installation. This is quite normal, and is due to the built-in Mullion Dryer Pipe which prevents sweating and radiates heat.
- When humidity is high, e.g. during rainy-season, condensation may appear on the surface of cabinet, especially around the door seal gasket. Wipe off the condensed water with a clean cloth.
- **Do not** keep the door open any longer than necessary, particularly in hot, humid weather.



When storing food...

- **Do not** place warm/hot foodstuff in the refrigerator.
- **Do not** overload the refrigerator. Gap must be provided between foodstuffs to maintain the cooling effect.
- Store fruits and vegetables in vegetable case, where trapped moisture helps preserve food quality for longer time periods.
- Drinking water, beverage bottles should be sealed to prevent odor contamination.
- Foodstuff such as vegetable, fruits and fresh food should be wrapped or pack in box before freezing and refrigerating.
- Put the food such as meat or fish in the freezer if you want to store for an extended period.
- Cover juicy food with tight lids, plastic film or foil.
- Cool hot dishes in room temperature before placing them in your refrigerator.



SPECIAL FEATURE

1) ECONAVI

The microchip performing ECONAVI mode is integrated into the main control board. By detecting refrigerator's frequency of use (opening and closing of door), ECONAVI mode automatically operates to save energy.

2) INVERTER

In accordance with temperature change inside the compartment, the motor of compressor runs at different speed. When the temperature is stable, the motor runs at a lower speed (energy saving & lower noise). When powerful cooling is required, the motor runs at a higher speed.

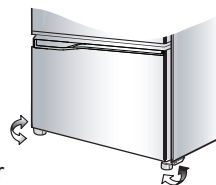
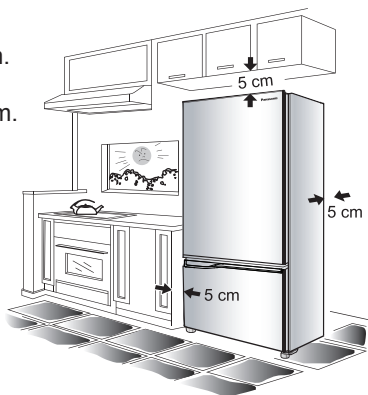
Installation

The distance requested for installation

- The top of the refrigerator and the ceiling at least 5 cm.
- The back of the refrigerator and the wall at least 5 cm.
- The sides of the refrigerator and the walls at least 5 cm.

Area around the installed unit

- Do not** locate the refrigerator in a humid place as rust may form and may cause electric leakage.
- Do not** locate the refrigerator exposing to direct sunlight as the heat and sunlight will increase the temperature.
- Do not** locate the refrigerator near heat source such as cooking stove or oven.
- Do not** block the openings around the refrigerator.
- The refrigerator must be located in the place where there is good air circulation.
- In case of placing the refrigerator on an uneven surface, adjust the adjustable bolt to make the refrigerator stands stably.



Moving or shifting

- When moving or shifting the refrigerator, remove ice maker, freezer case, pan water evap, etc. and check to be sure that there is no water in the refrigerator.

Power cord setting

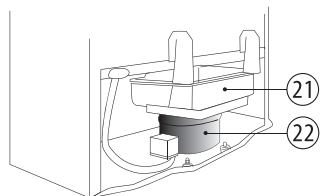
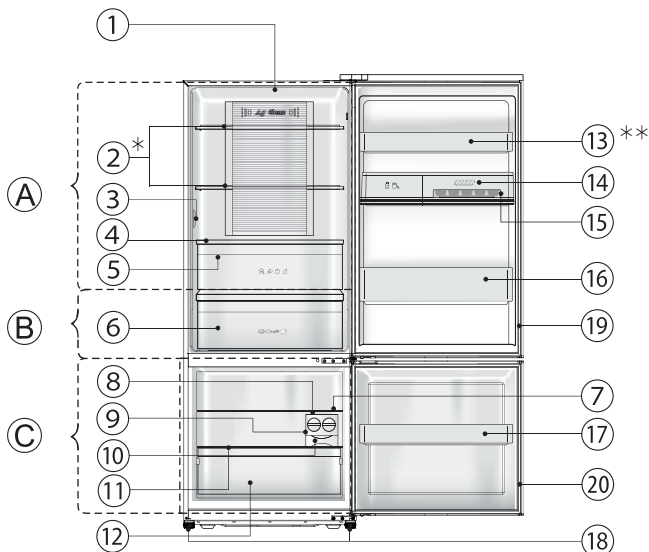
- To bring power cord for use, pan water evap from left should be lifted up. Then bring the power cord out and then insert pan water evap into the block by pressing at both the sides.

LED lamp and grounding

- The refrigerator LED lamp, specially designed for this refrigerator, does not function on individual replacing.
If you need replacement, please contact Panasonic Service Center.
- If there is no grounding wiring plug in refrigerator, it should be connected with grounding connection to prevent electrical hazard from electric leakage.

Parts identification

- Ⓐ FRIDGE ROOM
- Ⓑ PRIME FRESH ROOM
- Ⓒ FREEZER ROOM
- ① LED Lamp
- ② PC Glass tray
- ③ Control Panel
- ④ Glass tray crisper
- ⑤ Vegetable case
- ⑥ Prime Fresh case
- ⑦ 1-2 Glass tray
- ⑧ Ice maker
- ⑨ Ice cube tray
- ⑩ Ice box
- ⑪ FC Glass tray
- ⑫ Freezer case
- ⑬ Egg shelf
- ⑭ Utility box
- ⑮ Egg tray
- ⑯ Bottle shelf
- ⑰ Shelf FC
- ⑱ Adjustable bolt
- ⑲ Gasket PC
- ⑳ Gasket FC
- ㉑ Pan water evap
- ㉒ Compressor

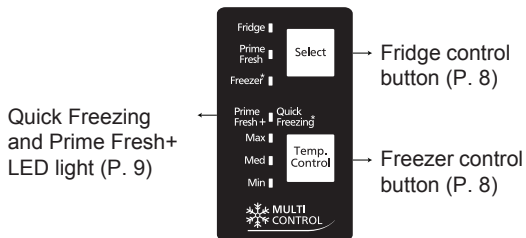


Product view from behind

* In model NR-BV280Q there is only 1 PC Glass tray.

** In model NR-BV280Q there is no egg shelf.

③ Control Panel



ECONAVI operation

Detect opening and closing of door and brightness around refrigerator, and automatically controls operation to save energy¹.

ECONAVI operation

- This refrigerator will learn the lifestyle patterns of your family from opening and the time periods of infrequent use to perform ECONAVI operation.
- The refrigerator learns your lifestyle pattern from the previous 3 weeks, and uses what it has learned from the 4th week onwards.

Setting for enabling ECONAVI operation

- ECONAVI operation is enabled automatically only when the temperature control of the Freezer room is set to "Med".
- However, ECONAVI does not operate while "Quick Freezing" or "Prime Fresh+" mode is operating.
- It is not possible to forcefully start ECONAVI operation.

Remark:

¹ Effectiveness differs depending on the ambient temperature, ambient brightness, number of times and when doors are opened and closed, and state in which food is stored.

Temperature control

The temperature can be adjusted for Min - Max levels. Press "Select" to select the area to control the temperature: Fridge, Prime Fresh, Freezer. After that, press "Temp Control" to set the temperature level.

"Fridge"	"Max" lower than "Med" by 2 °C ~ 3 °C
	"Med" approx. 1 °C ~ 6 °C
	"Min" higher than "Med" by 2 °C ~ 3 °C
"Prime Fresh"	"Max" lower than "Med" by 2 °C ~ 3 °C
	"Med" approx. -5 °C ~ -1 °C
	"Min" higher than "Med" by 2 °C ~ 3 °C
"Freezer"	"Max" lower than "Med" by 2 °C ~ 3 °C
	"Med" approx. -23 °C ~ -17 °C
	"Min" higher than "Med" by 4 °C ~ 5 °C

Remark:

While operating the refrigerator for the first time, after connecting the plug, adjust the temperature to "Med" position of each control and leave it for 24 hours for the effective cooling operation. After that, adjust the temperature as you prefer. If you want to save energy, do not adjust the temperature lower than the actual operating condition.

Temperature control (Fine adjustment mode)

The refrigerator is specially designed for appropriate use, which can adjust the temperature level to detailed 9 levels with the following details.

How to operate the fine adjustment mode

For the Freezer room

1. Press the button "Select" until LED "Freezer" turns on.
2. Set LED display to "Min" with the "Temp. Control" button.
3. Press and hold the "Temp. Control" button (for a few seconds) until the LED display return to show at "Med" position.
4. Set "9 levels" mode following below table mentioned by pressing the "Temp. Control" button.

■ LED Display table

Cooling level	<div> <div>Minimum</div> <div></div> <div>Maximum</div> </div>								
Levels	1	2	3	4	5	6	7	8	9
LED Display	Max	Max	Max	Max	Max	Max	Max	Max	Max
	Med	Med	Med	Med	Med	Med	Med	Med	Med
	Min	Min	Min	Min	Min	Min	Min	Min	Min

Lighting

Blinking

Not lighting

For the Fridge room

Operate above 1 ~ 4 steps with selecting "Fridge" area instead of "Freezer" area.

To reset the setting fine adjustment mode

Repeat step 1 ~ 3, then the refrigerator return to normal operation mode.

Remark:

- Prime Fresh room does not have fine adjustment mode.
- Temperature control varies depend on the changing of environment and food storage quantity.

Quick Freezing

How to operate the "Quick Freezing" mode

- Press the button "Select" until the LED "Freezer" turns on, then press "Temp Control" until the LED "Quick Freezing" turns on. "Quick Freezing" mode starts after 10 seconds.

Remark:

- If you want to stop the operation immediately, repeat the procedure until the LED "Quick Freezing" turns off.
- The system will stop the operation automatically when it runs for 60 mins (as ambient temperature is below 18 °C) or 150 mins (as ambient temperature is above 18 °C) and return to normal mode (the LED "Quick Freezing" turns off.)
- The LED "Quick Freezing" flashing means that the defrosting system is now working. "Quick Freezing" mode will start right after the defrosting operation is finished.

Prime Fresh+

How to operate the “Prime Fresh+” mode

- Press the button “Select” until the LED “Prime Fresh” turns on, then press “Temp Control” until the LED “Prime Fresh+” turns on.

Remark:

- If you want to stop the operation immediately, repeat the procedure until the LED “Prime Fresh+” turns off.
- The system will stop the operation automatically when it runs for 105 mins (as ambient temperature is below 18 °C) or 150 mins (as ambient temperature is above 18 °C) and return to normal mode (the LED “Prime Fresh+” turns off.)
- The LED “Prime Fresh+” flashing means that the defrosting system is now working. “Prime Fresh+” mode will start right after the defrosting operation is finished.

Remark:

When “Prime Fresh+” mode is active, if you set the “Quick Freezing” mode, the “Prime Fresh+” mode will stop and fridge activates “Quick Freezing” mode and vice versa.

Prime Fresh room

- This room is suitable for storing fresh food such as meat or fish.
Compared to storing in the Fridge room, the storage life of meat or fish becomes longer.
- When food is frozen too much...
Sliced raw fish or meat may be frozen too much.
Set the temperature control to “Min” to prevent food from over frozen.
- When food is not partially-frozen...
Depending on the type of food such as a block of meat or a large fish, the storage conditions and the ambient temperature, food may not be partially-frozen as it intended. Set the temperature control to “Max”.

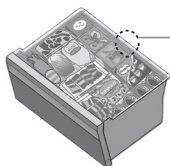
Easy to cut.

The partially-frozen food is easy to cut!
It comes in handy.



Food storage in the Freezer room

Freezer case



Maximum storage

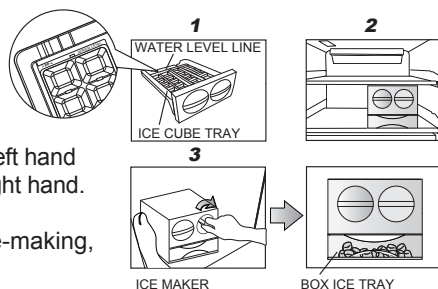
If the stored food exceeds edge of container, the freezer door can not close completely and the room may become frosted.

How to make ice cubes with ice maker

STEP

1. Fill water in the ice cube tray till the water level line.
2. Put ice cube tray inside Freezer room, wait until ice is made.
3. To remove ice cubes, suppress the frame with left hand and twist the dial ice cube tray clockwise with right hand. The ice cubes will drop into the box ice tray.

Remark: Don't pour water into ice box for ice-making, otherwise the box may crack.



Usage tips

Fridge room	"Processed food and drinks..." For regular storage of food and drinks or temporary storage of those to be served soon.	
Utility box	"Egg and cosmetics..." To prevent odors from spreading inside the Fridge room.	
Vegetable case	"Fruits and vegetables" A rather high humidity keeps fruits and vegetables fresh and juicy.	
Prime Fresh room	"Fresh food..." For storage of fresh food such as meat or fish for 1 week with soft freezing.	
Freezer room	"Dried or frozen foods..." For storage of food for an extended period.	



Storage using hermetically sealed containers is recommended!

To prevent the interior from being discolored!

- Cut citrus fruits
(→ The plastic will be discolored white.)



To prevent odors from spreading!

- Garlicky or other strong smelling vegetables
(→ Odors will spread to other nearby food.)



How to clean the refrigerator

1 Interior cleaning

Wipe off the stain with warm water. When stains can not be removed easily, wipe them with warm water and soap by using a soft cloth.

Then wipe the soap off using damp soft cloth.

2 Exterior cleaning

Cleaning by using soft cloth with warm water and soap.

Then wipe off the soap with warm soft cloth.

3 Gasket door FC/PC

- Clean by wiping gently. This area, petroleum gel was applied to reduce the friction to the refrigerator body. Be careful not to wipe off them.
- The door opening seal is replaceable when reaching end of life. While cleaning, push it back to the groove if it comes off.



Note: Do not use the following items. (Otherwise, the surface will be scratched.)



Kitchen detergents
(They crack plastic!)



Alkaline or weak
Alkaline



Cleanser or soap
powder



Benzine, thinner,
alcohol, acid, petroleum



Scrubber

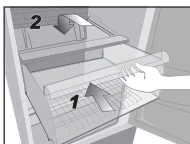
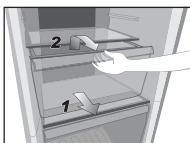


Hot water

Removing vegetable case, Prime Fresh case and Freezer case for cleaning

• Removing

1. Pull the case until it reaches the end of stopper.
2. Raise up the front of case a bit and then completely take out.



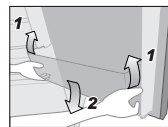
• Attaching

1. Push the case on both supporters.
2. Raise it up, then push until it reaches the end.

Removing egg shelf, bottle shelf, shelf FC and utility box for cleaning

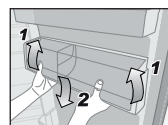
• Removing

1. Lift it upward, alternating between the right and left side.



• Attaching

2. Placing it on both supporters, and then press until it reaches the end of supporters.

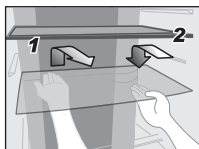


How to clean the refrigerator

Removing PC glass tray for cleaning

• Removing

1. Unhook the protrusion at the back by lifting it upward and pulling the tray outward until removing.



• Attaching

2. Push the tray until it reaches the end.

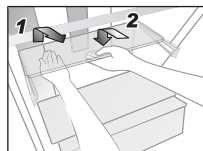
Remark:

- When removing tray above vegetable case, please pull out the vegetable case first and then follow to remove the tray as above details.
- In case of attaching the tray and it does not lock, make sure that you did not attach the wrong tray.
- Make sure that you don't attach the upper side of the tray downward.
- Two PC Glass trays can be used alternatively, but Glass tray crisper should only be attached right above vegetable case.

Removing FC glass tray for cleaning

• Removing

1. Unhook the protrusion at the back by lifting it upward and pulling the tray outward until removing.



• Attaching

2. Push the tray until it reaches the end.

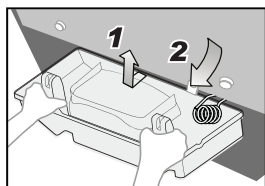
Remark:

- In case of attaching the tray and it does not lock, make sure that you did not attach the wrong tray.
- (In case of 1-2 Glass tray) In order to expand storage space inside Freezer room, the front tray can be removed and stacked with the other tray.

Removing pan water evap for cleaning

• Removing

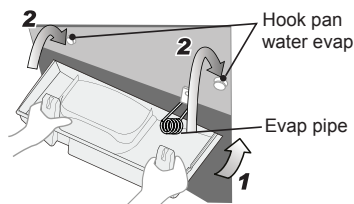
1. Tilt up the pan water evap a bit and then lift it upward until the pan water evap hole unlocks from the pan water evap hook.
2. Pull the pan water evap until it touches with the evap pipe then carefully take it out under the evap pipe.



• Attaching

1. Insert the pan water evap under the evap pipe.
2. Insert the pan water evap hole into the hook pan water evap as well as press-fitting both sides.

Remark: Check the status to make sure evap pipe does not touch the pan water evap.



Troubleshooting

Before you call for service, please check the following items:

The refrigerator does not operate.

- Check that the plug and its socket are in good condition.
- Check if there is any problem on main fuse and electrical system of the house.
- Check by unplugging and wait for 5 minutes before plugging it back in.

The refrigerator does not cool enough.

- Check to be sure that light in control panel is displayed at proper position.
- Check to see if the refrigerator is overloaded with stuff or there is any hot foodstuff refrigerated inside.
- Is the refrigerator exposed directly to sunlight or heat source?
- Is the refrigerator door completely closed?
- Is the refrigerator door opened frequently?

Dew, snow appear.

Outside

- When the ambient humidity is too high, the door gasket may have dew. This situation will be stopped if the air humidity decreases. Please wipe it up with dry cloth.

Inside

- Is the door closed firmly?
- Is the door being opened and closed too frequently?
- When too high weather humidity, long opening time or making too much ice, inside the freezer compartment may appear frozen snow. This is normal. Please wipe with dry and soft cloth.



The refrigerator makes noise.

- Check if the refrigerator is located on a stable floor or is installed properly.
- Check if there is any object in contact with the refrigerator.
- Check if evaporator pipe is in contact with pan water evaporator.

Food becomes frozen.

- Do you put the food near cold air holes?
- Do you adjust the temperature control at "Max"? Adjust to "Min"?
- Do you put food in prime fresh room?

The inside is smelling.

- Do you store the odorous food without wrapping it?

The surfaces of the refrigerator are hot.

- Because the refrigerator is equipped with the dew prevention and heat radiation tubes, the surfaces of the refrigerator get warmer when operating.
- The back and side plates may get warmer especially when starting up or if the door is frequently opened and closed.

Troubleshooting

The normal sounds of refrigerator.

- When the refrigerator starts operation, the sound like water flowing and boiling water is created. This is the sound of the cooling liquid.
- The noise is generated when the automatic defrost system operated.
- The dilatation of the details inside the refrigerator in the cooling process can cause sound “crack-crack”.
- You may feel that the operation sound is larger because the compressor operates in high-speed under the following conditions: the refrigerator does not cool fully on the occasion such as using it for the first time, opening/closing the door too frequently, the surrounding temperature is high. The sound becomes more quiet after cooling fully.

Lamp does not turn on.

- Please contact Panasonic service center.

Specifications

Model No.		NR-BV360Q	NR-BV320Q	NR-BV280Q
Freezer Star Rating		✱✱✱		
Capacity (L) Gross/ Storage (IEC 62552)	Total	358 / 312	322 / 278	286 / 242
	Freezer	104 / 78		
	Fridge, Prime Fresh	254 / 234	218 / 200	182 / 164
Outside dimensions Width x Depth x Height (mm)		601 x 656 x 1785	601 x 656 x 1645	601 x 656 x 1505
Net weight (kg)		58	56	52
Cooling System		Frost-free system		
Refrigerant Type		R600a		
Rated Voltage (V) Rated Frequency (Hz)		Refer to the rating label put at the panel back.		

Memo

[illegible]

Website: <http://www.panasonic.com>

© Panasonic Appliances Vietnam Co., Ltd. 2020

雪櫃使用說明指引

雪櫃的正常聲音。

- 當雪櫃開始運行時，會聽見像流水或沸水的聲音。這其實是冷媒流動的聲音。
- 當自動除霜系統工作時會產生噪聲。
- 雪櫃內附件在制冷過程中膨脹會發出「劈啪」破裂聲。
- 當壓縮機在以下情況下高速運作時，您可能會感覺運作聲音變大：雪櫃在首次使用，過於頻繁地開閉櫃門或環境溫度過高等情況下未完全冷卻。當雪櫃完全冷卻後，聲音會變得更為安靜。

燈無法打開。

- 雪請聯繫 Panasonic 電器服務中心。

規格

型號.		NR-BV360Q		NR-BV320Q		NR-BV280Q	
冷凍等級		***					
容量 (公升) 合計/ 存儲 (IEC 62552)	合計	358 / 312		322 / 278		286 / 242	
	急凍室	104 / 78					
	冷藏室, 主保鮮室	254 / 234		218 / 200		182 / 164	
	外型尺寸 闊 × 深 × 高 (毫米)	601 × 656 × 1785		601 × 656 × 1645		601 × 656 × 1505	
淨重 (kg)		58		56		52	
製冷系統		風冷式					
雪種類型		R600a					
額定電壓 (伏特) 額定頻率 (赫茲)		請參考面板背面上的額定標籤。					

雪櫃使用說明指引

在要求服務前，請檢查下列事項：

雪櫃不能操作。

- 檢查並確保插頭及其插座的狀況良好。
- 檢查屋內的主保險絲和電力系統有否出問題。
- 檢查時請拔除插頭，5 分鐘後再重新插回。

雪櫃溫度不夠低。

- 檢查確保控制面板上的指示燈在正確位置顯示。
- 檢查雪櫃是否負荷過多或冷藏了任何熱食。
- 雪櫃是否直接曝露在陽光下或靠近熱源？
- 雪櫃門是否完全關上？
- 雪櫃是否打開過於頻繁？

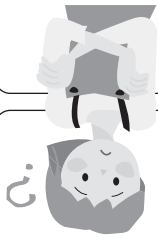
外面

- 當環境濕度過高時，門墊圈可能出現水珠。空氣濕度降低時，這種情形將消失。請用乾布將水珠擦掉。

出現水珠、結霜。

裡面

- 門是否緊密關閉？
- 開關門是否太過頻繁？
- 如果環境濕度過高，長時間打開櫃門或製作了太多冰塊，冷凍室內部就可能結霜。這是正常現象。請用乾燥的軟布抹掉。



雪櫃發出噪聲。

- 檢查雪櫃是否已穩固放置或正確安裝。
- 檢查是否有任何物體與雪櫃接觸。
- 檢查與鍋水接觸的蒸發管是否蒸發。

食物結冰。

- 是否把食物放近冷風口處？
- 是否將溫度控制調整為「Max」（強冷）？調整為「Min」（弱冷）。
- 是否將食物放在速凍格？

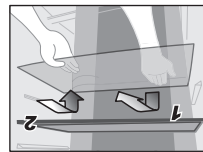
內部出現異味。

- 是否放置沒有包裹，會發出氣味的食物？

雪櫃的表面發熱。

- 由於雪櫃具有防結露和發熱管設備，因此它在工作時表面會變熱。
- 當制冷啟動或櫃門經常關閉時，背部和兩側發熱會更為明顯。

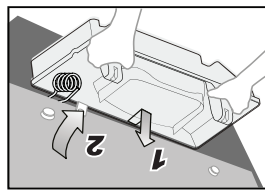
拆除冷藏室玻璃托盤以進行清洗



- 取出
- 1. 向上抬起托盤，打開背後的鎖扣，直到托盤取出。
- 裝上
- 2. 將托盤放回原位，一直推至蓋頭。

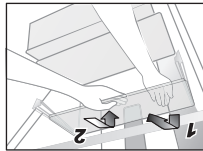
- 備註：**
- 取下蔬菜保鮮格上的托盤時，請先拉出蔬菜保鮮格，再如上所述取出托盤。
 - 萬一在裝回盤子時卡不住，請檢查確認是否裝錯了盤子。
 - 確保您未將托板的上面朝下。
 - 兩個 PC 玻璃托板可互相更換，確保把 PC 玻璃托板蓋在蔬果格上面。

拆除鍋水蒸發器以進行清洗



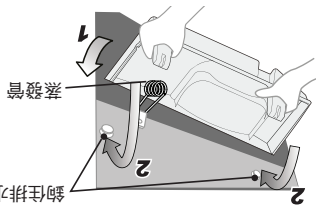
- 取出
- 1. 向上傾斜鍋水蒸發器一點，然後向上提起，直到鍋水蒸發孔從鍋水蒸發器解鎖。
- 2. 拉出鍋水蒸發器，直到它與蒸發管接觸，然後小心地將其從蒸發管下取出。

拆卸冷凍室玻璃托盤以進行清洗



- 取出
- 1. 向上抬起托盤，打開背後的鎖扣，直到托盤取出。
- 裝上
- 2. 推動該轉盤直到其觸底。

- 備註：**
- 萬一在裝回盤子時卡不住，請檢查確認是否裝錯了盤子。
 - (如果是1-2玻璃轉盤) 為了擴大凍結室內的存儲空間，可以拆除前方轉盤並與其他轉盤堆放起來。



- 裝上
 - 1. 將蒸發水蒸發物插入蒸發管下方。
 - 2. 將鍋水蒸發孔插入鉤鍋水蒸發並壓入兩側。
- 備註：**
- 檢查狀態以確保蒸發管不接觸鍋水蒸發。

如何清洗雪櫃

1

內部清洗

用溫水擦去污漬。當污漬無法輕鬆擦除時，可用柔軟的布蘸溫水和肥皂進行清潔。

然後，用濕軟布擦掉肥皂水。

外部清洗

使用柔軟的布蘸溫水和肥皂進行清潔，然後擦去肥皂水。然後，用濕軟布擦掉肥皂水。

3

門襯墊 FC/PC

輕輕擦拭乾淨。此區域塗有石油凝膠以少雪櫃櫃身的摩擦。

請格外小心，切勿擦掉。

● 櫃門密封膠須在達到使用壽命時更換。清潔時，如果密封膠從凹槽掉落，可將其按壓回槽內。

註：請勿使用以下物品（以免表面刮花）

鹼性或弱鹼性



廚房用清潔劑
(可是塑料破裂!)



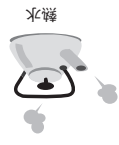
清潔劑或肥皂粉



汽油、稀釋劑、酒精、
酸、石油



洗滌劑

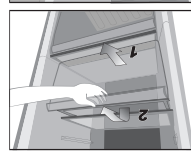


熱水

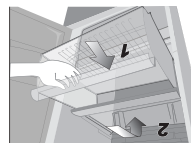
請使用溫水!



拆除蔬果格及-3°C微冷保鮮室以進行清洗。

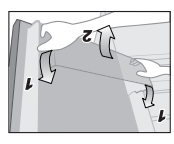


- 取出
- 1. 將蔬果格/-3°C微冷保鮮室向裡推入直至到達盡頭。
- 2. 稍微抬起蔬果格/-3°C微冷保鮮室前端，然後完全取出。

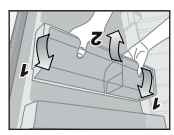


- 裝上
- 1. 把蔬果格/-3°C微冷保鮮室推到兩邊的支架上。
- 2. 抬起後向裡推入，直至到達盡頭。

拆除雞蛋架，冷凍室托架及通用容器以進行清洗

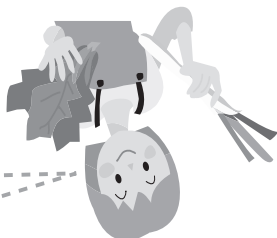


- 取出
- 1. 向上抬起，在左右側間交替更換。
- 2. 裝上
- 2. 置于兩邊的支架上，向裡推入，直至其觸及支架底部。



推薦使用密封容器進行儲存！

- 切制柑橘類水果
(→ 塑料將會褪色變成白色。)
- 防止托盤內
側掉色！
- 防止氣味擴散！
- 大蒜或者其他氣味很大的蔬菜
(→ 氣味會蔓延至附近的食品。)



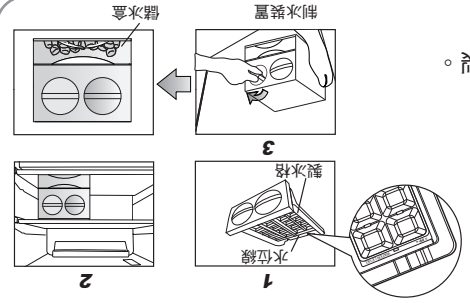
	“經乾燥或冰凍的食品...” 適用於更長時間儲存食品。	冷凍室
	“新鮮食品...” 微凍儲存新鮮食物1周，例如肉或魚。	-3℃微冷保鮮室
	“水果和蔬菜”模式 較高濕度便於保持水果和蔬菜保鮮多汁。	蔬果格
	“雞蛋和化妝品...” 為了防止電冰箱內散發出臭氣。	通用容器
	“經過處理的食品和飲料...” 用於常規儲存食物和飲料或者暫時儲存即 時需要的食物和飲料。	冷藏室

使用提示

步驟

1. 向制冰格加水至水位線。
2. 將制冰格放入制冰裝置中並儲存於冷凍室，直到冰塊形成。
3. 如需取出冰塊，用左手壓住格框，用右手順時針轉動圓形製冰格。冰塊便會掉進儲冰盒。

備註：
● 切勿將水倒入儲冰盒制冰，否則儲冰盒會開裂。



如何用制冰裝置製造小方冰塊

微凍結模式 (Prime Fresh+)

如何操作 “Prime Fresh+” 模式

- 按下 “Select” 按鈕直至LED指示燈 “Prime Fresh” 點亮，然後按下 “Temp. Control” 按鈕直至LED指示燈 “Prime Fresh+” 點亮。

備註：

- 如果您想立即停止運行，重覆本過程直至LED指示燈 “Prime Fresh+” 熄滅。
- 在運行105分鐘（環境溫度低於18 °C）或運行150分鐘（環境溫度高於18 °C）之後，系統將自動停止運行並返回正常模式（LED指示燈 “Prime Fresh+” 熄滅）。
- LED 燈 “Prime Fresh+” 閃爍表示解凍系統正在運行， “Prime Fresh+” 模式會在解凍操作結束後立即開始。

備註：

當微凍結模式 (Prime Fresh+) 處於活動狀態時，如果設置快速冷凍模式 (Quick Freezing)，微凍結模式 (Prime Fresh+) 將停止，冰箱啟動快速冷凍模式 (Quick Freezing)，反之亦然。

主保鮮室

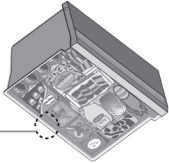
- -3°C微冷保鮮室適合儲存魚、肉等新鮮食材。與冷藏室相比，魚、肉的儲藏壽命會延長。
- 食物冷凍過度時
魚片或肉片可能會過度冷凍，將溫度控制設置為 “Min”。
- 避免食物過度冷凍。
食物無法完全冷凍時
受到食物大小影響，如肉塊和體型較大的魚，以及儲存條件和周圍溫度等，食物可能無法達到預期的冷凍效果。此時將溫度控制設置為 “Max”。

儲存在冷凍室的食物

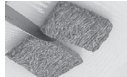
底部冷凍格

最大值儲存

如果放入的食物超出容器的邊緣，則冷凍效果會大大降低或冷凍室會形成霜凍。



易於切開
冷凍食物易於切開。更為方便。



溫度控制（微調模式）

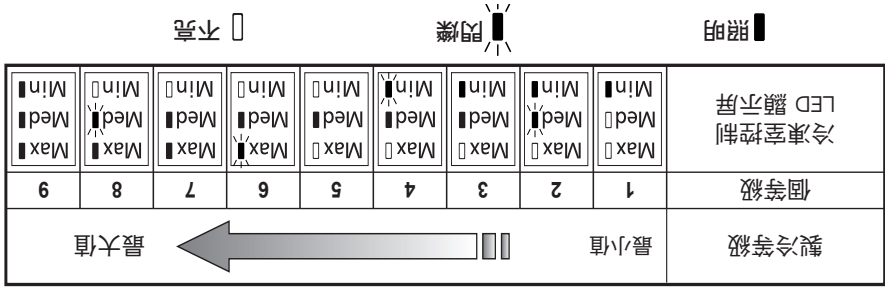
本雪櫃經特別設計，旨在滿足各項用途，細分成9個溫度等級以供調節，其詳情如下。

如何操作“微調模式”模式

對於冷凍室

- 1. 按下“Select”按鈕直至LED指示燈“Freezer”點亮。
- 2. 用“Temp. Control”按鈕將LED顯示屏設定為“Min”（最小）。
- 3. 按“Temp. Control”按鈕（幾秒鐘），直至LED顯示屏返回顯示“Med”（中間）位置。
- 4. 按“Temp. Control”按鈕，遵循下表設定“9個等級”模式。

■冷凍室控制 LED 顯示屏



對於冷藏室

選擇“Fridge”區域而不是“Freezer”區域根據上面的1~4步操作。

重新設定“微調模式”模式

重複步驟1~3，然後雪櫃會返回至正常操作模式。

備註：

●-3°C微冷保鮮室不有微調模式。

●溫度控制視乎環境和食物儲存量的變化而不同。

快速冷凍模式（Quick Freezing）

如何操作“Quick Freezing”模式

- 按下“Select”按鈕直至LED指示燈“Freezer”點亮，然後按下“Temp. Control”按鈕直至LED指示燈“Quick Freezing”點亮。10秒鐘之後“Quick Freezing”模式啟動。

備註：

- 如果您想立即停止運行，重覆本過程直至LED指示燈“Quick Freezing”熄滅。
- 在運行60分鐘（環境溫度低於18°C）或運行150分鐘（環境溫度高於18°C）之後，系統將自動停止運行並返回正常模式（LED指示燈“Quick Freezing”熄滅。）
- LED燈“Quick Freezing”閃爍表示除霜系統正在運行，“Quick Freezing”模式會在除霜操作結束後立即開始。

ECONAVI 操作

檢測們的打開和關閉以及雪櫃周圍的亮度，并自動操作控制，從而節約能源¹⁾。

ECONAVI 操作

- 雪櫃在開啟及偶爾執行 ECONAVI 操作期間，可以學習您的家庭生活方式。
- 雪櫃前3周學習您的生活方式，從第 4 周開始可按您的生活方式來運作。

啟用 ECONAVI 操作的設定

- 只有當冷凍室的溫度控制設定為“Med”（中溫）時，ECONAVI 操作才會自動啟用。
- 然而，正在進行快速冷凍或微凍結模式時無法操作 ECONAVI。

- 不能強行啟動 ECONAVI 操作。

備註：

¹⁾效能視乎環境溫度、環境的亮度、雪櫃門開關的次數，以及食品存儲狀態而不同。

溫度控制

溫度調控範圍為 Min - Max。按下“Select”按鈕選擇區域控制溫度：冷藏室，-3 °C微冷保鮮室，冷凍室。之後，按下“Temp. Control”定個溫度等級。

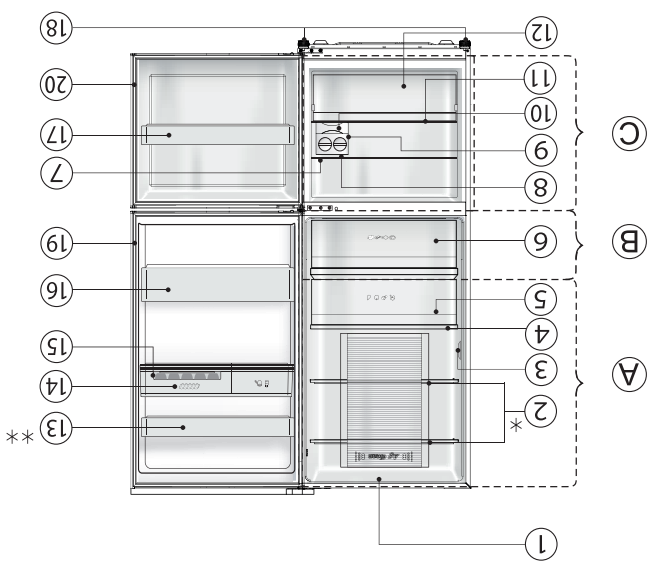
“Fridge”	“Max” 低於 2 °C ~ 3 °C
	“Med” 大約 1 °C ~ 6 °C
	“Min” 高於 2 °C ~ 3 °C
“Prime Fresh”	“Max” 低於 2 °C ~ 3 °C
	“Med” 大約 -5 °C ~ -1 °C
	“Min” 高於 2 °C ~ 3 °C
“Freezer”	“Max” 低於 2 °C ~ 3 °C
	“Med” 大約 -23 °C ~ -17 °C
	“Min” 高於 4 °C ~ 5 °C

備註：

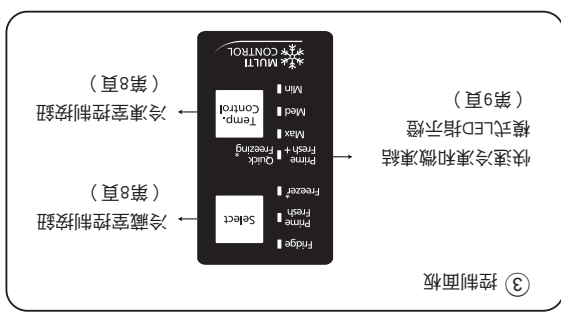
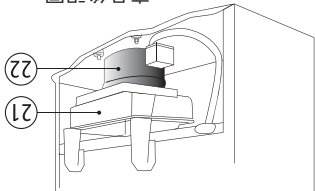
第一次操作雪櫃時，插上插頭後，將各區域溫度調到 “Med”（中間）位置，並讓其運行24小時，以便進入有效的製冷操作階段。之後，可根據您的要求調節溫度。若您想要節能，請勿將溫度調節至低於實際所需的溫度。

各部名稱

- ① LED 燈
- ② 冷藏室玻璃托板
- ③ 控制面板
- ④ 保鮮格玻璃托板
- ⑤ 蔬果格
- ⑥ -3℃微冷保鮮格
- ⑦ 1-2 玻璃轉盤
- ⑧ 制冰裝置
- ⑨ 製冰格
- ⑩ 儲冰格
- ⑪ 冷凍室玻璃托板
- ⑫ 底部冷凍格
- ⑬ 儲蛋架
- ⑭ 通用容器
- ⑮ 儲蛋托
- ⑯ 置瓶架
- ⑰ 冷凍室托架
- ⑱ 可調節櫃腳
- ⑲ 冷藏室櫃門封邊
- ⑳ 冷凍室櫃門封邊
- ㉑ 鍋水蒸發器
- ㉒ 壓縮機



產品後視圖



* 在 NR-BV280Q 型中，僅有一個冷藏室玻璃托板。
 ** 在 NR-BV280Q 型中，無儲蛋架。

安裝位置與牆壁間的距離

- 雪櫃頂部和上方之間必須至少留有5厘米的空隙。
- 雪櫃背面與牆壁之間必須至少留有5厘米的空隙。
- 雪櫃側面與牆壁之間必須至少留有5厘米的空隙。

安裝區域

- 切勿把雪櫃放置在潮濕的地方。因為這樣容易生鏽可能導致漏電。
- 切勿把雪櫃直接放置在陽光下照射。因為熱和陽光將使雪櫃溫度上升。
- 切勿將雪櫃靠近熱源，例如廚灶或烤箱。
- 切勿堵塞雪櫃四周的空隙。
- 雪櫃必須放置在空氣流通的位置。
- 如果雪櫃沒有接地插頭，須將其連接至接地端，以防止漏電的危險。

移動或變更位置

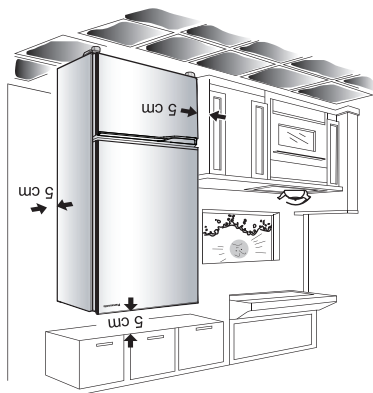
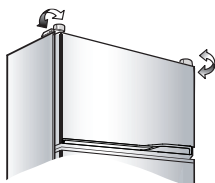
- 在移動或轉移冰箱時，移開制冰裝置、冷凍箱、鍋水蒸發器等，檢查以確保冰箱內無水。

電源線設定

- 若使用電源線，應將左邊的排水托盤移開，然後拿出電源線，按下兩側將排水托盤插入雪櫃內。

LED 燈和接地

- 專為本雪櫃設計的雪櫃內 LED 燈，無法由個人進行更換。若您需要更換時，請聯絡‘當地經銷商’。
- 如果雪櫃沒有接地插頭，須將其連接至接地端以防漏電。



使用時...

- 當拔掉插頭後，至少等候5分鐘，才能再次插上電源。
- 否則，可能會導致壓縮機停止運作。
- 根據實際操作情況調校溫度以節省能源。
- 若您將外出一段時間，或是雪櫃裡沒有冷藏任何物品，應拔出插頭以節約能源。
- 當接通電源後，雪櫃周圍及表面可能會發熱，這是正常現象。
- 當濕度很高時（例如在雨季）在雪櫃機身外部可能有水汽，特別是在櫃門密封墊周圍。請用乾淨的布片擦掉凝結的水汽。
- 蔬果格里面的濕氣可能會凝結成水汽，所以需要布片定期進行擦拭。每月對蔬果格清潔一次。
- 切勿將櫃門長時間打開，特別是在炎熱潮濕的天氣裡更需注意。



- ## 儲存食物時...
- 切勿把熱/燙的食物放進雪櫃。
 - 切勿放置過多的東西。
 - 食品之間必須要有間隙以保持冷卻效果。
 - 將水果和蔬菜儲存在蔬果格中，鎖緊水份，令食物長時間保鮮。
 - 應蓋緊飲水瓶，飲料瓶，以防止異味進入瓶內。
 - 將蔬菜，水果及新鮮食品等食物放進雪櫃冷凍或冷藏前，應使用保鮮紙包好或放入保鮮盒中。
 - 如要長時間儲存，應將肉或魚等食物放入冷凍室。
 - 將熱飯放入雪櫃之前，請將其冷卻至室溫。
 - 用緊蓋，塑料膜或箔片蓋住多汁食品。



特殊功能

1) ECONAVI

運行智慧節能 (ECONAVI) 模式的微晶片與主控制板集成。智慧節能 (ECONAVI) 模式通過檢測冰箱的使用頻率（開門和關門）來自動調整以節省能源。

2) 變頻器

根據箱內的溫度變化，壓縮機會以不同速度運轉。

當溫度穩定時，壓縮機會以較低速度運轉（節能和低噪音）。當需要強力製冷時，壓縮機會以較高速度運轉。

否則可能導致
傷或意外事故。

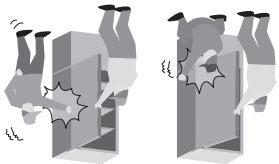


小心

開/關櫃門時...



- 切勿將手指放入雪櫃門夾縫處。
- 切勿用力開關雪櫃門。(否則食物可能掉落並造成人身傷害。)



儲存食物時...



- 不得冷凍玻璃瓶子，否則可能導致傷害事故發生。(若玻璃瓶內的液體凍結，玻璃瓶可能破裂，對您造成傷害。)
- 切勿在玻璃托架上放置較重物品或施加較大衝擊力。(否則，這些玻璃托架可能會破碎，您可能會因此而受傷。)



移動雪櫃時...



- 搬運時請牢牢抓緊雪櫃。
- 表面容易受損的地面應使用防護罩等。

使用須知

開/關櫃門時...

- 切勿存放比托架或托盤大的物品，否則雪櫃門將無法完全關閉，從而造成冷氣洩漏。
- 切勿頻繁打開雪櫃或打開很長一段時間，以防雪櫃內部形成水滴，因而浪費能源。
- 經常檢查櫃門密封膠邊，它必須與雪櫃櫃身完全貼合。

清潔時...

- 切勿使用化學物質或液體清理雪櫃。這些物體將會損壞和腐蝕雪櫃表面。
- 每三個月清洗一次雪櫃背部壓縮機上方的排水托盤，以防止因潮濕產生異味。



否則可能導致火災，
燙傷，爆炸或觸電。

警告



使用時...



- 切勿損壞製冷劑回路（位於機背的管道）。
- 切勿觸摸壓縮機或管道，此區域溫度較高。
- 切勿讓孩童攀在雪櫃門上玩耍，雪櫃可能會因此翻倒壓在孩童身上。
- 不要將任何水容器放在冰箱頂部以防止溢出來的水引起電擊或燃燒。
- 切勿在設備後部放置多用途便携式插座或便携式電源。



- 該雪櫃不適合身體，感官或精神能力降低或者缺乏經驗和知識的人員（包括孩童）使用，除非得到其安全負責人員關於使用雪櫃的監督或指示。
- 應對孩童進行監督，確保其不使用雪櫃玩耍。

在緊急情況下...



R600a
iso-butane



- 切勿在本設備中儲存爆炸性物品，如備有易燃壓縮氣體的噴霧罐。
- 切勿在本設備中的食品儲藏室內使用電器，除非該型號電器是由製造商推薦。
- (如果製冷劑洩漏，可能會對接點產生火花而引起火災)



- 切勿自行嘗試拆解，維修或改裝雪櫃。
- 需要維修雪櫃時，請諮詢您的零售商或授權服務中心。
- 除生產商推薦的設備外，否則不得使用機械設備或其他設備加速除霜過程。

安裝時需注意...



- 固定冰箱以避免因不平衡而引致的危險。
- 擺放設備時，請確保電源線沒有被困或損壞。



- 確保將雪櫃插頭接入已接地的電源插座。不得插入未接地的電源插座。

安全使用須知

請確保遵循這些說明。

警告



這個標誌表示
[可能導致嚴重傷害或者死亡。]

小心



這個標誌表示
[可能導致傷害或故障。]



這個標誌表示雪櫃必須接地以防止電擊。



這個標誌表示需要採取行動。



這些標誌表示禁止。

適用於電源插頭和電源線...



- 切勿用濕手插拔插頭。
- 切勿讓電源線或插頭受損。
- 清潔時請拔下電源插頭。
- 完全插入符合雪櫃額定電流及額定電壓的牆上電源插座。
- 專為雪櫃預留一個插頭。
- 請完全展開電源線，避免將過多電器連接到供雪櫃使用的同一插頭上。
- 定期清除電源插頭上的灰塵。
- 如果電源線損壞，必須由廠家，服務代理或相關的合格人員進行更換，以防發生危險。
- 若您聞到一股燒焦的氣味，請斷開電源插頭，並對廚房進行通風。
- 若出現任何異常現象或故障，請停止使用本雪櫃。異常及故障範例。
- 電源線或插頭異常滾燙。
- 電源線被深切或變形。
- 聞到燒焦氣味。
- 有麻刺感。

請立即聯繫您當地的經銷商進行保養/維修。



回收產品時...

- 在將雪櫃回收之前，請拆除所有的門上密封條，以防止孩童被關閉在裏面。
- 務必在雪櫃的使用壽命內，保持上述警告標誌完好無損。
- 如果雪櫃被搬遷到其他地點以及被運送到回收廠，必須將使用者手冊轉交給任何可能使用或處理雪櫃的人。
- 根據當地相關法律，本雪櫃使用異丁烷作為製冷劑。
- 丟棄本機時，請以適當的方法處理，切勿以火焚化。

警告



否則可能導致火災，
燙傷，爆炸或觸電。

iso-butane
火災危害/易燃物品





內容

安全使用須知	2
使用須知	4
安裝	6
各部名稱	7
ECONAVI 操作	8
溫度控制 (微調模式)	8
溫度控制 (快速冷凍模式 (Quick Freezing))	9
微凍結模式 (Prime Fresh+)	10
主保鮮室	10
儲存在急凍室的食物	10
使用提示	11
如何清洗雪櫃	12
雪櫃使用說明指引	14
規格	15

■ NON-CFC

本機的製冷劑 (異丁烷 (R600a)) 和隔熱劑 (Cyclo-Pentane) 都使用完全無氟的材料。所以使用該雪櫃不會傷害地球的臭氧層。

非常感謝您購買 Panasonic 產品。

- 使用本產品前請仔細閱讀這些說明並遵照第 2-5 頁的安全注意事項。
- 請確保使用證上的購買日期和零售商名稱蓋有印章，並將它和本操作指南一同收妥。