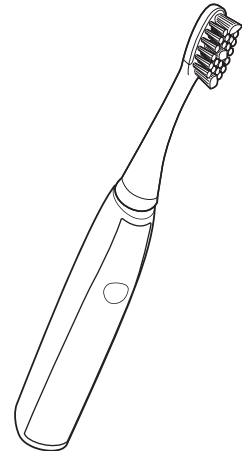


# Panasonic®

## Operating Instructions (Household) Sonic Vibration Toothbrush Model No. EW-DL82

English.....	3
中文 .....	17





## Operating Instructions (Household) Sonic Vibration Toothbrush Model No. EW-DL82

### Contents

---

<b>Safety precautions.....</b>	<b>4</b>	<b>Cleaning the charger.....</b>	<b>11</b>
<b>Parts identification .....</b>	<b>7</b>	<b>Cleaning the carrying case.....</b>	<b>12</b>
<b>Storing and charging the toothbrush .....</b>	<b>7</b>	<b>Troubleshooting .....</b>	<b>13</b>
<b>Before cleaning your teeth .....</b>	<b>8</b>	<b>Battery life.....</b>	<b>15</b>
<b>Using the toothbrush .....</b>	<b>9</b>	<b>Removing the built-in rechargeable battery.....</b>	<b>15</b>
<b>Tips on usage .....</b>	<b>10</b>	<b>Specifications .....</b>	<b>15</b>
<b>Cleaning the main unit and the brush head .....</b>	<b>11</b>	<b>Changing the brush head (Sold separately).....</b>	<b>15</b>
<b>If the identification ring comes off... </b>	<b>11</b>		

Thank you for purchasing this Panasonic product.

Before operating this unit, please read these instructions completely and save them for future use.

## Safety precautions

To reduce the risk of injury, loss of life, electric shock, fire, malfunction, and damage to equipment or property, always observe the following safety precautions.

### Explanation of symbols

The following symbols are used to classify and describe the level of hazard, injury, and property damage caused when the denotation is disregarded and improper use is performed.



## DANGER

Denotes a potential hazard that will result in serious injury or death.



## WARNING

Denotes a potential hazard that could result in serious injury or death.



## CAUTION

Denotes a hazard that could result in minor injury.

The following symbols are used to classify and describe the type of instructions to be observed.



This symbol is used to alert users to a specific operating procedure that must not be performed.



This symbol is used to alert users to a specific operating procedure that must be followed in order to operate the unit safely.



## DANGER



**This product has a built-in rechargeable battery. Do not throw into fire, apply heat, or charge, use, or leave in a high temperature environment.**

- Doing so may cause overheating, ignition, or explosion.



## WARNING



**Always unplug the power plug from a household outlet when cleaning the charger.**

- Failure to do so may cause electric shock or injury.

**Immediately stop using and remove the power plug if there is an abnormality or failure.**

- Failure to do so may cause fire, electric shock, or injury.

**<Abnormality or failure cases>**



- **The main unit or charger is deformed or abnormally hot.**

- **The main unit or charger smells of burning.**

- **There is abnormal sound during use or charging of the main unit or charger.**

- Immediately request inspection or repair at an authorized service center.



**Always ensure the appliance is operated on an electric power source matched to the rated voltage indicated on the charger.**

**Fully insert the power plug.**

- Failure to do so may cause fire or electric shock.



# WARNING

**Regularly clean the power plug to prevent dust from accumulating.**



- Failure to do so may cause fire due to insulation failure caused by humidity.

Disconnect the power plug and wipe with a dry cloth.

**This appliance is not intended for use by persons (including children) with reduced physical, sensory or mental capabilities, or lack of experience and knowledge, unless they have been given supervision or instruction concerning use of the appliance by a person responsible for their safety. Children should be supervised to ensure that they do not play with the appliance.**



- Failure to do so may cause an accident or injury.

**If the cord of the charger is damaged, the entire charger should be discarded. The charger should be replaced.**



- Failure to do so may cause an accident or injury.

**Do not connect or disconnect the power plug to a household outlet with a wet hand.**



- Doing so may cause electric shock or injury.

**Do not immerse the charger (except the main unit guide) in water or wash it with water.**



- Doing so may cause electric shock or fire due to a short circuit.

**Never use the charger in a bathroom or a shower room.**



- Doing so may cause electric shock or fire due to a short circuit.



**Never disassemble except when disposing of the product.**

- Doing so may cause fire, electric shock, or injury.



**Do not store within the reach of children or infants.**

**Do not let them use it.**

- Doing so may cause an accident or injury due to accidental ingestion of removable parts.

**Do not use when the cord or the power plug is damaged or when the fitting into the household outlet is loose.**



**Do not damage, modify, forcefully bend, pull, twist, or bundle the cord.**

**Also, do not place anything heavy on or pinch the cord.**

- Doing so may cause electric shock or fire due to a short circuit.

**Do not use anything other than the supplied charger. Also, do not charge any other product with the supplied charger.**



- Doing so may cause burn or fire due to a short circuit.

**Do not use in a way exceeding the rating of the household outlet or the wiring.**



- Exceeding the rating by connecting too many power plugs to one household outlet may cause fire due to overheating.

**Do not modify or repair.**



- Doing so may cause fire, electric shock, or injury.

Contact an authorized service center for repair (battery change, etc.).



# CAUTION



**Disconnect the power plug from the household outlet when not using for extended period of time.**

- Failure to do so may cause electric shock or fire due to electrical leakage resulting from insulation deterioration.



**Disconnect the power plug by holding onto it instead of the cord.**

- Failure to do so may cause electric shock or fire due to a short circuit.



**People who have severe gum disease, have teeth being treated, or are concerned about symptoms within their mouth should consult a dentist before use.**

- Failure to do so may cause injury or damage to teeth and gums.

**Do not use the brush with toothpaste that contains a high abrasive content, such as toothpaste for removing tar or for whitening.**

**Do not let anyone that cannot operate the brush themselves use it.**



**People with a low sensitivity within their mouth should not use the brush.**

**Do not apply the brush head strongly against teeth or gums, or use it continuously against same spot. Do not apply the plastic part of the main unit or brush head to teeth.**

- Doing so may cause injury or damage to teeth and gums.



**Never use for a purpose other than cleaning your teeth.**

- Doing so may cause an accident or injury.



**Do not share the brush head with your family or other people.**

- Doing so may result in infection or inflammation.



**Do not drop or subject to shock.**

- Doing so may cause injury.



**Do not wrap the cord tightly around the charger when storing.**

- Doing so may cause the wire in the cord to break with the load, and may cause fire due to a short circuit.



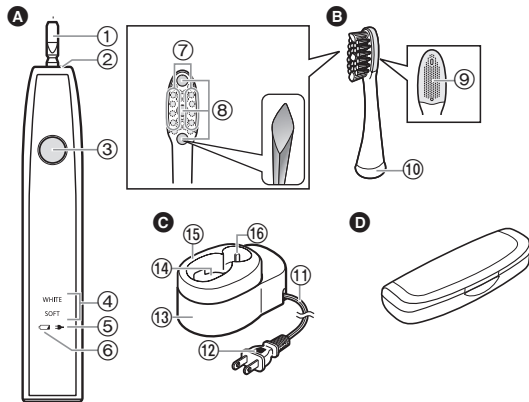
**Do not place a metallic object such as a coin or a clip on top of the charger.**

- Doing so may cause burns due to excessive heat.

## ► Notes

When you first begin using the toothbrush, you may experience slight bleeding of the gums even though your gums may be healthy. This is because your gums are receiving stimulation by the toothbrush for the first time. The bleeding should stop after one or two weeks of use. Bleeding that persists for more than two weeks may be indication of an abnormal condition of your gums, such as pyorrhea. In this case, stop using the toothbrush and consult your dentist.

## Parts identification



### A Main unit

- ① Toothbrush shaft
- ② Waterproof rubber seal
- ③ Power switch
- ④ Mode indicator
- ⑤ Charge status lamp (→)
- ⑥ Battery capacity lamp (←)

### B Stain care brush

- ⑦ Extra fine side bristles
- ⑧ High-density bristles

- ⑨ Tongue cleaner
- ⑩ Identification ring

### C Charger (RE8-52)

- ⑪ Cord
- ⑫ Power plug
- ⑬ Charger base
- ⑭ Charging section
- ⑮ Main unit guide
- ⑯ Brush head storage

Accessory

### D Carrying case

### Characteristics of brush bristles (⑧)

The bristles in the center (high-density bristles) are arranged in a diamond shape, which is designed for stain care.

## Storing and charging the toothbrush

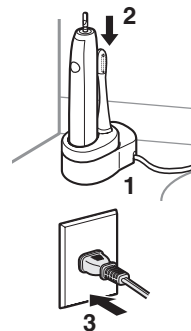
- If the toothbrush stops operating when first using it (immediately after purchasing it, or after not using it for 3 months or more) or during use, charge the main unit.
- Adequate ambient temperature for charging is 5 °C – 35 °C. The battery may not charge properly or not at all under extreme low or high temperatures.
- You can keep the main unit attached on the charger when not in use to maintain the full battery capacity. It will not overcharge the main unit.
- The main unit may become warm during use and charging. However, this is normal.

**1** Place the charger on a horizontal and stable place such as sink or shelf.

**2** Align the main unit so it is facing forward, and set it straight into the charging section.

**3** Insert the power plug into the household outlet.

- The charge status lamp glows and the charging will start.
- Charging cannot start when the main unit is tilted or the bottom of the main unit is not in contact with the charging section.



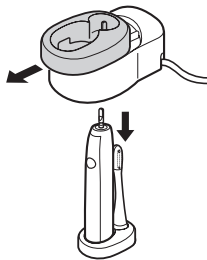
## If not charging constantly

- You can fully charge the toothbrush in approx. 17 hours. The charging time may decrease depending on the charging capacity.
- A full charge will supply enough power for approx. 90 minutes use.
- Disconnect the power plug when the charge status lamp turns off.

### ► About storage

The toothbrush can only be stored in a compact size with the main unit guide.

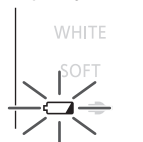
1. Slide and remove the main unit guide, and place it on horizontal and stable place.



2. Store the main unit and the brush head.

## About the lamp

When the battery capacity is low



The battery capacity lamp blinks.

While charging



The charge status lamp glows.

After charging is completed



The charge status lamp turns off

- The toothbrush may not charge even if the charge status lamp turns on when a charger other than the supplied charger is used.

## Before cleaning your teeth

- Recommended ambient temperature for using is 5 °C – 35 °C.
- Do not allow hair products (e.g., gel or oil) or hand lotion to come in contact with the unit as they may damage its surface.
- Do not forcefully turn the brush head with the brush head attached to the main unit. Doing so may cause the brush head or main unit to become damaged.

### ► About soft start function (For WHITE mode only)

The toothbrush will gradually reach the selected speed and vibration approximately 2 seconds after it starts operating.

### ► About 30-second brushing notification timer function

The timer will signal once at 30-second intervals to indicate the brushing time for each part of your mouth. It will signal twice at 2-minute intervals to indicate the recommended total brushing time.

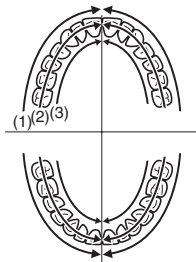


It is important to brush each area in the same sequence and with the same amount of time, every time you brush, to uniformly brush and clean your teeth.

Use the 30-second brushing notification timer function wisely so there will be no missed spot in your mouth.

- Divide your teeth into 4 parts (upper and lower, left and right), and brush one part in order such as “(1) front of the teeth”, “(2) biting plane of the teeth”, and “(3) back of the teeth” spending 30 seconds.

Brush the other parts in the same manner, and brush your whole mouth in about 2 minutes.



The brush head of this sonic vibration toothbrush vibrates at a high speed.

Therefore:

- You only need to lightly press the bristles against your teeth for brushing.
- When first using this appliance, some may experience a tickling or tingling sensation caused by the high-speed vibrations. The sensation should subside after you use the toothbrush several more times.

## Using the toothbrush

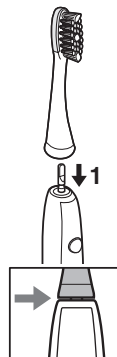
### 1 Place the brush head firmly onto the toothbrush shaft.

- Attaching or removing diagonally or while twisting may cause the brush head or the main unit to become damaged.
- The toothbrush shaft will move when a force is applied. This is required for operation, and is not a malfunction.

- There will be a small gap between the brush head and the main unit.

### 2 Place the toothbrush in your mouth.

- Apply a small amount of toothpaste to the brush head, if desired, before turning the power on to prevent the toothpaste from spattering.



### 3 Press the power switch to select the mode.

- Each time you press the power switch, the mode changes.

Mode	Description
WHITE SOFT	<b>WHITE mode</b> <ul style="list-style-type: none"> <li>• Recommended for removing plaque and stain care with normal tooth brushing</li> </ul>
WHITE SOFT	<b>SOFT mode</b> <ul style="list-style-type: none"> <li>• Recommended when you feel the white mode is too powerful</li> <li>• Recommended for tongue cleaning</li> </ul>
WHITE SOFT	<b>OFF</b>

- Stains refer to coloration on the surface of the teeth due to food and drink such as coffee, wine and tea.
- It is not possible to whiten the color of teeth beyond their original color, yellowing teeth due to aging, or discolored teeth.
- The sound may increase when the brush head is pressed too strongly against the teeth, but this is not a malfunction. Apply the brush head lightly against the teeth.

### 4 Turn off the main unit when you have finished brushing.

- Turn off the main unit before removing it from your mouth to prevent foam from spattering.

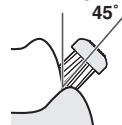


## Tips on usage

### How to apply/move when brushing your teeth

Mode: WHITE/SOFT

- ▶ **For the boundary between the tooth surfaces, or teeth and gums**  
Place the bristles at a 45° angle.



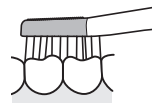
- ▶ **For the back of the front teeth or misaligned teeth**  
Brush vertically.

Move toothbrush to match the angle of the teeth.



- ▶ **For the biting surface (back teeth)**

Apply from top.



- Place the bristles of the brush gently against your teeth and move the toothbrush slowly. The movement will slow down when the brush head is applied too strong.
- Apply a small amount when using toothpaste.

## How to apply/move when cleaning your tongue

Mode: SOFT

Apply the tongue cleaner so that it barely touches the tongue, and move forward with slight force from the area that becomes dirty.

Repeat several times.

- You may injure your tongue if the tongue cleaner is pressed against the tongue too strong.



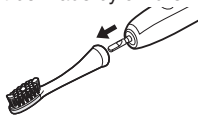
### ► To prevent emetic response

Poke your tongue out forward and apply the brush while you are breathing out.

This will avoid the urge to vomit.

## Cleaning the main unit and the brush head

- Cleaning and user maintenance should not be made by children.
- Turn off the main unit and remove the brush head before cleaning them with water.



### ► Brush head

Wash the brush head under running water.

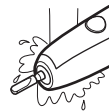
- Shake well to remove water after washing.
- Do not pull the bristles of the brush.
- Do not wash with water hotter than 80 °C.
- Do not wash the tongue cleaner excessively with a pointed object or fingernails.



### ► Main unit

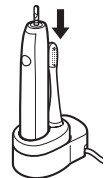
Wash the main unit under running water.

- Do not rub or damage the waterproof rubber seal.
- Do not immerse the main unit under water.
- Do not wash with water hotter than 40 °C.



### ► After washing with water

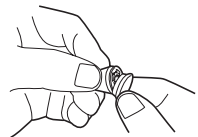
- Wipe dry with a cloth.
  - Do not charge while it is wet.
- Return the main unit and the brush head to the charger.



## If the identification ring comes off

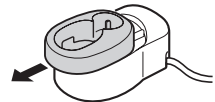
Put the identification ring back on.

- The identification ring may break if pulling it too strong.
- Using the toothbrush without the identification ring has no effect on its performance. The ring is simply for user identification purposes.



## Cleaning the charger

- Slide and remove the main unit guide.



2. Wipe off any dirt on the charger base using a soft cloth.



3. Wash the main unit guide with water.

- Wipe off water after washing.
- Only use water to wash the main unit guide.

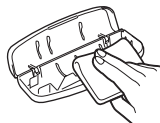


4. Wipe the prongs of the power plug with a dry cloth about once every 6 months.

## Cleaning the carrying case

1. Wash with water.

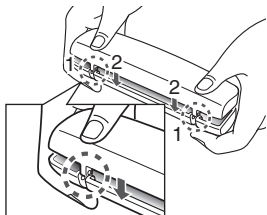
2. Wipe off water after washing.



### If the top case has come off

1. Align the mounting section of the top case and the bottom case as shown in the figure.

2. Press the top case in the direction indicated by arrows.



Problem	Possible cause	Action
The charge status lamp does not turn on.	<ul style="list-style-type: none"> <li>▶ You have just purchased the toothbrush or have not used it for a while.</li> </ul>	<p>The toothbrush may not blink or turn on for several minutes after starting to charge it, however it will turn on if you continue to charge it. If it continues to blink after a while, contact an authorized service center for repair.</p>
The charge status lamp is blinking rapidly. (Twice every second)	<ul style="list-style-type: none"> <li>▶ The temperature is too low or high while charging.</li> </ul>	<p>Charge the toothbrush within the recommended charging temperature of 5 °C to 35 °C. If it continues to blink even when charging within the recommended charging temperature, contact an authorized service center for repair.</p>
The toothbrush can be used only for several minutes, even if it is charged.	<ul style="list-style-type: none"> <li>▶ The charging time is short.</li> <li>▶ The main unit does not stand straight on the charger.</li> </ul>	<p>Charge the toothbrush for 17 hours or longer. (See page 7.)</p> <p>Stand the main unit so the bottom is in contact the charging section of the charger, and check that the charge status lamp comes on.</p>
The toothbrush does not operate without the battery capacity lamp blinks.	<ul style="list-style-type: none"> <li>▶ The rechargeable battery has reached its operating life. (Approx. 3 years)</li> </ul>	<ul style="list-style-type: none"> <li>▶ Contact an authorized service center for repair.</li> </ul>
The toothbrush does not operate.	<ul style="list-style-type: none"> <li>▶ The temperature is too low or high while using it.</li> </ul>	<ul style="list-style-type: none"> <li>▶ Use within the recommended usage temperature of 5 °C to 35 °C.</li> </ul>
The toothbrush stops operating every once in a while.	<ul style="list-style-type: none"> <li>▶ The “30-second brushing notification timer function” is in operation. (See page 8.)</li> </ul>	<ul style="list-style-type: none"> <li>▶ This is not a malfunction.</li> </ul>
The vibration increases gradually when pressing the power switch.	<ul style="list-style-type: none"> <li>▶ The “Soft start function” is in operation. (See page 8.)</li> </ul>	<ul style="list-style-type: none"> <li>▶ Continue using it.</li> </ul>



## Battery life

Approximately 3 years. The battery may have reached its operating life if the usage frequency decreases drastically, even after a full charge.

(The operating life of the battery may differ depending on usage or storage conditions)

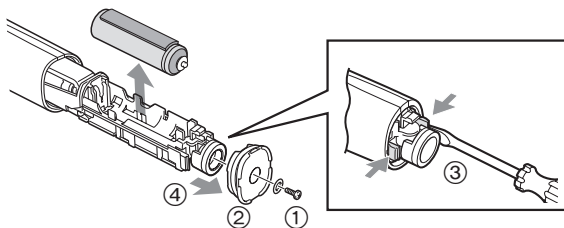
## Removing the built-in rechargeable battery

**Remove the built-in rechargeable battery before disposing the toothbrush.**

Please make sure that the battery is disposed of at an officially designated location if there is one.

This figure must only be used when disposing the toothbrush, and must not be used to repair it. If you dismantle the toothbrush yourself, it will no longer be waterproof, which may cause it to malfunction.

- Remove the toothbrush from the charger when removing the battery.
- Press the power switch to turn on the power and then keep the power on until the battery is completely discharged.
- Perform steps ① to ④ and lift the battery, and then remove it.
- Please take care not to short-circuit the battery.



## For environmental protection and recycling of materials

This toothbrush contains a Li-ion battery.

Please make sure that the battery is disposed of at an officially assigned location, if there is one in your country.



## Specifications

Power source	See the name plate on the product (Automatic voltage conversion)
Battery	1 Lithium-ion battery (3.6 V; 500 mAh)
Charging time	Approx. 17 hours

This product is intended for household use only.

## Changing the brush head (Sold separately)

- The brush should be replaced with a new one every 3 months or so due to hygiene reasons, even if its shape is unchanged.
- If the bristles are bent to one side or worn, the toothbrush is not effective for brushing. Replace the brush head with a new one.

Part number	Replacement Brush for EW-DL82	
WEW0929	Stain care brush	
WEW0940	Point brush	





## 目錄

安全須知.....	18	清潔充電器 .....	24
部件說明.....	20	清潔攜帶盒 .....	24
存放與充電 .....	21	疑難排解.....	25
清潔牙齒前須知.....	22	電池壽命.....	26
使用牙刷.....	22	拆除內置充電池.....	26
使用提示.....	23	規格 .....	26
清潔主機和刷頭.....	23	更換刷頭 (另購刷頭).....	26
如果識別環脫落.....	24		

## 安全須知

為減低受傷、死亡、觸電、火警、故障、產品損壞及財物損失的風險，請務必留意以下安全須知。

### 符號說明

以下符號用於為危險、傷害及財物損失的級別分類和作出解釋。若不理會此等符號，不當使用本產品就可能導致所述的危險、人身傷害及財物損失。

#### 危險

表示潛在的危險會導致嚴重受傷或致命。

#### 警告

表示潛在的危險可能會導致嚴重受傷或致命。

#### 注意

表示危險可能導致輕微受傷。

以下符號用於分類和解釋必須留意的指示類型。



此符號用於提示用戶，不得執行某項特定的操作程序。



此符號用於提示用戶，必須遵從某項特定的操作程序，藉以安全操作本產品。

## 危險

本產品隨附內置充電式電池。



請勿將牙刷拋進火中、加熱、或充電、使用、或放置在高溫環境下。

- 否則可能導致過熱、燃燒或爆炸。

## 警告



清潔充電器期間，請勿將電源插頭連接到家用插座。

- 否則可能導致觸電或受傷。

若產品出現異常或故障情況，請立即停止使用產品及拔除電源插頭。

- 否則可能導致火警、觸電或受傷。



< 異常或故障情況 >

• 主機或充電器已變形或異常過熱。

• 主機或充電器發出燃燒的氣味。

• 主機或充電器在使用或充電時出現異常警響。

- 請立即將產品帶往 Panasonic 直屬服務站，進行檢查或維修。



請務必使用與充電器上標示之額定電壓相符的電源進行操作。

完全插入電源插頭。

- 否則可能導致火警或觸電。



定期清潔電源插頭以防止積聚灰塵。


- 否則濕氣可能令絕緣失效，導致火警。

拔除電源插頭並以乾布擦拭。

## 警告

本產品並不適於生理、感官或心智能力下降或者缺乏經驗和知識的人士（包括兒童）使用，除非此類人士在其安全責任人給予產品使用相關監管和指導的情況下。兒童應進行監管，確保其不能玩耍產品。

- 否則可能導致意外或受傷。

 如充電器的電源線已損毀，整個充電器應丟棄。充電器應該更換。

- 否則可能導致意外或受傷。

 切勿在手濕時將電源插頭插入家用電源插座或從插座中拔除。

- 否則可能導致觸電或受傷。

 請勿將充電器浸入水中或用水清洗（主機導架除外）。

- 否則可能會因短路而導致觸電或火警。

 請勿在浴室或淋浴間使用充電器。

- 否則可能會因短路而導致觸電或火警。

 切勿拆卸本產品，棄置時除外。

- 否則可能導致火警、觸電或受傷。

 切勿將產品存放於兒童或幼童可觸摸的地方。請勿讓兒童或幼童使用。


- 否則可能因不小心攝取拆除零件而導致意外或受傷。

如電源線或電源插頭損毀，或插進家用插座時鬆脫，請勿使用充電器。

 請勿損毀、更改、強行彎曲、拉扯、扭曲或將電源線束成一捆。

此外，切勿將重物放在電源線上或夾緊電源線。

- 否則可能會因短路而導致觸電或火警。

 除隨附的充電器外，請勿使用其他充電器。同樣，請勿使用隨附的充電器將其他產品充電。

- 否則可能會因短路而導致灼傷或火警。

 切勿以超出家用電源插座或配線額定值的方式使用產品。


- 將太多電源插頭插至同一插座上，以致超出額定值，可能會因過熱而導致火警。

 切勿改裝或自行維修產品。


- 否則可能導致火警、觸電或受傷。

請聯絡 Panasonic 直屬服務站進行維修（更換電池等）。


## 注意

 不使用牙刷時，請從家用插座拔除電源插頭以供延長時間使用。

- 否則可因絕緣劣化造成漏電，導致觸電或火警。

 請拿住電源插頭以拔除電源，請勿拉扯電源線。


- 否則可能導致觸電或因短路造成的火災。

 患有嚴重牙齦疾病、曾接受牙齒治療或擔心口內症狀的人士應向牙醫求診才使用。

- 否則可能導致受傷或牙齒和牙齦受損。

請勿使用此牙刷取用高磨料含量的牙膏，例如用來移除焦油或進行潔白的牙膏。

請勿讓任何不懂操作此牙刷的人士使用。

 口內敏感度低的人士不應使用牙刷。

請勿大力使用刷頭按住牙齒或牙齦，或持續在相同部位使用。

請勿將主機或刷頭的塑膠部分在牙齒上刷。

- 否則可能導致受傷或牙齒和牙齦受損。

 除了清潔牙齒，請勿用作其他用途。

- 否則可能導致意外或受傷。

## ⚠ 注意

- ❌ 請勿與家人或其他人士共同使用同一個刷頭。  
- 共用刷頭可能會導致感染或發炎。
- ❌ 切勿將產品摔落或使其受到撞擊。  
- 否則可導致受傷。
- ❌ 請勿在收納時，將電源線纏繞在充電器上。  
- 否則可令電源線內的纏線因受壓而斷裂，並可因短路而導致火警。
- ❌ 請勿將金屬物件，例如金幣或夾子放在充電器上。  
- 否則可能因過熱導致燒傷。

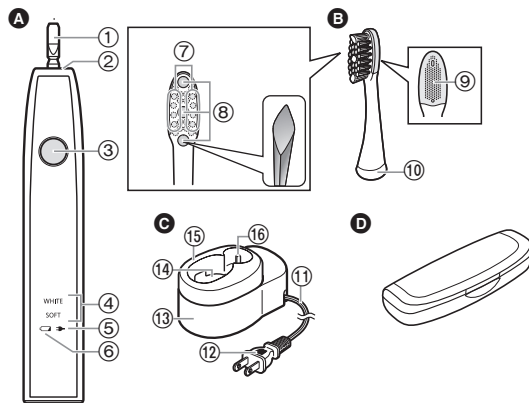
### 緊急處理方法：

使用中，本產品若有冒煙或火花情形時，請立即關閉電源及拔掉插頭。並立即通知 Panasonic 直屬服務站處理，以便查明原因。

### ▶ 註

首次使用牙刷時，即使在您的牙齦可能是健康的情況下您也可能會遇到牙齦輕微出血的現象。這是由於您的牙齦正首次受到牙刷的刺激。使用一周或兩周之後應會停止出血。持續兩周以上的出血可能意味著您的牙齦出現膿溢等異常狀況。此時，請停止使用牙刷並諮詢您的牙科醫生。

## 部件說明



### A 主機

- ① 牙刷軸
- ② 防水橡膠密封圈
- ③ 電源開關
- ④ 模式指示燈
- ⑤ 充電狀態指示燈 (🔌)
- ⑥ 電池電量指示燈 (🔋)

### B 污漬護理刷頭

- ⑦ 極細緻側刷毛
- ⑧ 高密度刷毛
- ⑨ 舌頭清潔器
- ⑩ 識別環

### C 充電器 (RE8-S2)

- ⑪ 電源線
- ⑫ 電源插頭
- ⑬ 充電器座
- ⑭ 主機充電槽
- ⑮ 主機導架
- ⑯ 刷頭存放槽

### 配件

### D 攜帶盒

### 刷毛特徵 (B)

中間的刷毛 (高密度刷毛) 是以鑽石形狀排列，即是為污漬護理而設。

## 存放與充電

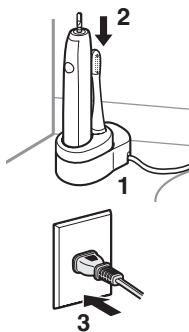
- 當您首次使用牙刷（購買後即時，或 3 個月或更長沒有使用時）或使用期間停止操作，請將主機充電。
- 理想的充電溫度為 5 °C - 35 °C。
- 電池可能未正確地充滿或在極低或極高溫度下未完全充滿電池。
- 不使用時，將主機一直放置在充電器上可維持充足的電池電量。此時不會造成主機過度充電。
- 使用或充電期間，主機可能會變熱。這是正常現象。

**1** 將充電器放在水平及穩固位置，例如洗手平台或浴櫃上。

**2** 將主機的正面朝前，並以直立式放置到主機充電槽。

**3** 將電源插頭插入家用插座。

- 充電狀態指示燈點亮，充電隨即開始。
- 當主機是傾斜或主機底部未與充電槽接觸，則無法充電。



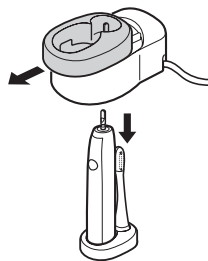
## 如不經常充電

- 可在約 17 小時內對牙刷完全充電。充電時間可能會減少，視充電容量而定。
- 一次完全充電提供的電力足夠使用約 90 分鐘。
- 當充電狀態指示燈關掉時請拔掉電源插頭。

### ► 關於保存

只可保存本產品主機與刷頭在主機導架內。

1. 滑動並取出主機導架，然後放在水平及穩固位置上。
2. 保存主機及刷頭。



## 關於指示燈

電池電量不足時	充電時	充電完成後
		
電池電量指示燈閃爍。	充電狀態指示燈點亮。	充電狀態指示燈熄滅。

- 如非使用隨附的充電器，即使充電狀態指示燈開啓，牙刷也可能無法充電。

## 清潔牙齒前須知

- 建議使用的環境溫度是 5 °C - 35 °C。
- 請勿讓頭髮產品（如髮膠或髮油）或潤手乳液接觸到主機，否則可能會損壞主機表面。
- 請勿在刷頭裝上主機後強行將刷頭轉動。否則可導致刷頭或主機損毀。

### ▶ 關於暖開機狀態（只限 WHITE（亮白）模式）

牙刷開始操作後，大約 2 秒後會逐漸達到所選的速度和震動。

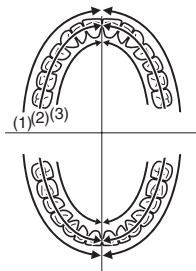
### ▶ 刷牙提示計時器功能

計時器將每隔 30 秒鐘發出一個信號，提示口腔各個部位的刷牙時間。每隔 2 分鐘發出兩次信號，提示建議的刷牙總時間。

每次刷牙時，為了均勻刷牙並清潔牙齒，按照相同的順序和相同的時間刷各個部位很重要。

請充分應用刷牙提示計時器，以確保口腔內每個部位都清潔乾淨。

- 將牙齒分為 4 個部位（上和下、左和右），按照“（1）牙齒前方”、“（2）牙齒咀嚼面”和“（3）牙齒後方”的順序花費 30 秒鐘刷一個部位。以相同的方式刷其他部位，在大約 2 分鐘內刷完整個口腔。



此電動牙刷的刷頭是以高速震動。

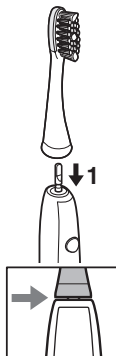
因此：

- 您只需輕輕將刷毛按到牙齒上即可刷牙。
- 首次使用本產品時，部分人士可能會遇到因高速振動引起的騷癢或麻刺感。這種感覺在多次使用牙刷後應該會減弱。

## 使用牙刷

### 1 將刷頭正確安裝在牙刷軸上。

- 打斜裝上或拆除或扭曲可能導致刷頭或主機損毀。
- 當用力使用牙刷時牙刷軸會移動。操作必須進行此動作，所以並不是故障。



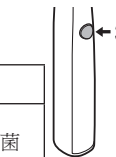
- 刷頭和主機之間會存在微小的隙縫。

### 2 將牙刷放入口中。

- 如有需要，在刷頭上擠上少量牙膏才開啓電源，以防止牙膏四濺。

### 3 按下電源開關以選取想要的模式。

- 每次按下電源開關時，模式會輪流。



模式	說明
WHITE SOFT	<b>WHITE（亮白）模式</b> <ul style="list-style-type: none"><li>• 建議使用一般刷牙方式移除牙菌斑及污漬</li></ul>
WHITE SOFT	<b>SOFT（溫和）模式</b> <ul style="list-style-type: none"><li>• 建議當您感到亮白模式太強時使用</li><li>• 建議清潔舌頭時使用</li></ul>
WHITE SOFT	<b>關</b>

- 污漬是指由食物及飲品如咖啡、酒精及茶引起的牙齒表面染色。
- 無法將原始牙齒顏色、因年老變黃牙齒、或脫色牙齒潔白。
- 當太用力使用刷頭按住牙齒時，聲音可能會提升，但並不是故障。將刷頭輕輕按住牙齒刷牙。

## 4 完成刷牙後關閉主機。

- 爲了避免泡沫濺落，請從口腔中取出主機之前將其關閉。

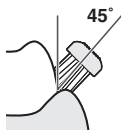
### 使用提示

#### 刷牙時如何使用／移動

模式：WHITE/SOFT（亮白／溫和）

##### ► 牙齒表面或牙齒和牙齦之間的週邊

將刷毛呈 45 度角放置。



##### ► 前齒背面或不齊牙齒

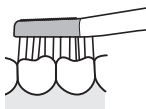
刷頭以垂直角度刷牙。

按照對應牙齒角度的原則移動牙刷。



##### ► 牙齒咀嚼面

由上開始刷。



- 將刷毛輕輕放在牙齒上，慢慢移動牙刷。  
當太大力使用刷頭時，動作會減慢。
- 使用牙膏前擠上少量牙膏。

#### 清潔舌頭時如何使用／移動

模式：SOFT（溫和）

請將舌頭清潔器輕輕接觸舌頭表面，由骯髒部位開始用輕微力度向前移。

重複數次。

- 如太用力將舌頭清潔器按住舌頭，可能會導致舌頭受傷。

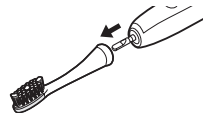


##### ► 爲預防產生嘔吐感

當您呼氣時請將舌頭向外伸出然後使用牙刷刷牙。這會避免產生嘔吐的感覺。

#### 清潔主機和刷頭

- 請勿讓孩童清潔及維修。
- 用清水清潔前請關掉主機並移除刷頭。



##### ► 刷頭

用自來水沖洗刷頭。

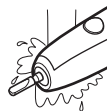
- 沖洗後將其用力甩乾。
- 請勿拉扯刷毛。
- 請勿用溫度高於 80 °C 的熱水沖洗。
- 請勿使用尖銳物品或指甲過度清洗舌頭清潔器。



##### ► 主機

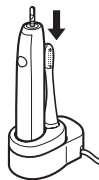
用流水沖洗主機。

- 請勿摩擦或損壞防水橡膠密封圈。
- 請勿將主機浸入水中。
- 請勿用溫度高於 40 °C 的熱水沖洗。



### ► 用水沖洗後

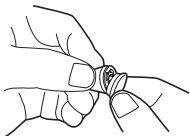
1. 用布擦乾。
  - 請勿在潮濕的情況下充電。
2. 將主機和刷頭放回充電器上。



## 如果識別環脫落

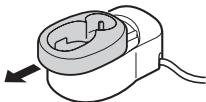
將識別環放回。

- 如強力拉扯識別環可能會斷。
- 沒有識別環的情況下使用牙刷不會影響其性能。識別環僅用於識別使用者。



## 清潔充電器

1. 滑動並取出主機導架。



2. 使用軟布擦乾在充電器座上的污垢。



3. 用清水清洗主機導架。

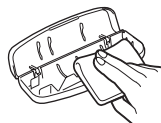
- 清洗後擦乾水份。
- 只可使用清水清洗主機導架。

4. 大約每6個月用乾布擦拭電源插頭的插腳。



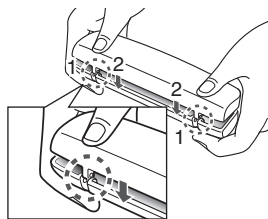
## 清潔攜帶盒

1. 用清水洗淨。
2. 清洗後擦乾水份。



## 組裝攜帶盒

1. 對齊盒蓋和盒底的裝卸部分，如圖解所顯示。
2. 請按照所示的箭頭方向按住盒蓋。







## 電池壽命

大約 3 年。即使完全充電後，如電池用量次數大幅減低，其操作壽命可能已滿。

(電池操作壽命視乎用處或保存狀態可能會有異)

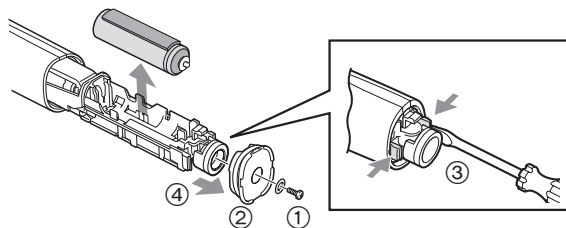
## 拆除內置充電電池

取出內建充電式電池才丟棄牙刷。

如您的國家／地區有指定認可棄置電池的地方，請確保將電池棄置於這些地方。

本圖解只供丟棄牙刷才使用，並不可用來維修。如您自行拆解，牙刷將無法再防水，並可能導致故障。

- 取出電池時，請從充電器取下牙刷。
- 按電源開關接通電源，保持電源的開啓狀態直至電池完全放電。
- 執行步驟 ① 至 ④ 以拉出並拆除電池。
- 請注意勿讓充電電池短路。



廢電池請回收

只限於台灣

## 環保及資源回收

本產品內附鋰電池。

如您的國家有指定認可棄置電池的地方，請確保將電池棄置於這些地方。

## 規格

電源	100 - 240 V 50 - 60 Hz (自動變壓)
電池	1 顆鋰電池 (3.6 V; 500 mAh)
充電時間	約 17 小時

此產品只適於家居內使用。

## 更換刷頭 (另購刷頭)

- 基於衛生原因，即使其形狀無變，刷頭應每 3 個月更換一次。
- 如果刷毛側彎或破損，則刷牙效果會不佳。請更換新的刷頭。

部件號碼	EW-DL82 專用更換刷頭	
WEW0929	污漬護理刷頭	
WEW0940	刷尖	

製造商：Panasonic Corporation

生產國別：日本

進口商：台松電器販賣股份有限公司 (僅限台灣)

公司地址：新北市中和區建六路 57 號

連絡地址：新北市中和區員山路 579 號

連絡電話：(02)2223-5121

網址：<http://panasonic.com.tw>

# MEMO

Panasonic Corporation  
<http://panasonic.net/>  
© Panasonic Corporation 2013