

Panasonic®

Operating Instructions 使用說明書

(Household) AC/Rechargeable Shaver
(家用) 交流・充電式 刮鬍刀

Model No. ES-LC20
型號

English	2
----------------	----------

中文	8
----	---

Before operating this unit, please read these instructions completely and save them for future use.
使用本產品前，請仔細通讀該說明書，並妥善保存以備未來使用。



Thank you for choosing a Panasonic shaver. Please read all instructions before use.

Important

This shaver has a built-in rechargeable battery. Do not throw into fire, apply heat, or charge, use, or leave in a high temperature environment.

► Using the shaver

Caution

The outer foil is very thin and can be damaged if not used correctly. Check that the foil is not damaged before using the shaver. Do not use the shaver if the foil etc. is damaged as you will cut your skin.

- Terminate the usage when there is abnormality or failure.
- Do not shave with soap or clean it with water when operating with the adaptor.
- Do not share with your family or other people.
- Adequate ambient temperature for using is 5-35 °C. If you use the appliance in temperature outside of the recommended range, it may stop functioning.
- This appliance is not intended for use by persons (including children) with reduced physical, sensory or mental capabilities, or lack of experience and knowledge, unless they have been given supervision or instruction concerning use of the appliance by a person responsible for their safety. Children should be supervised to ensure that they do not play with the appliance.

► Charging the shaver

- Never use the adaptor in the bathroom or shower room.
- Do not use any power cord or adaptor other than this adaptor (RE7-51).
- Plug in the adaptor into a household outlet where there is no moisture and handle it with dry hands.

- Hold the adaptor when disconnecting it from the household outlet. If you tug on the power cord, you may damage it.
- The supply cord cannot be replaced. If the cord is damaged, the adaptor should be scrapped.
- Adequate ambient temperature for charging is 5-35 °C.

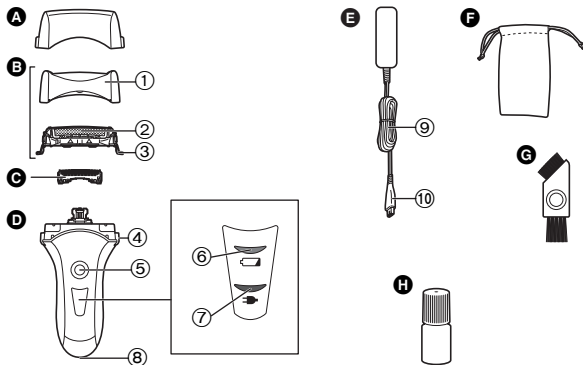
► Cleaning the shaver

Warning

Disconnect the power cord from the shaver before cleaning it in water to prevent electric shock.

- Keep both the inner blades inserted. If only one of the inner blades is inserted, the shaver may be damaged.
 - If you clean the shaver with water, do not use salt water or hot water. Do not soak the shaver in water for a long period of time.
 - Clean the housing only with a soft cloth slightly dampened with tap water or soapy tap water. Do not use thinner, benzine, alcohol or other chemicals.
- ### ► Storing the shaver
- Store the shaver in a place with low humidity after use.
 - Do not store the shaver where it will be exposed to direct sunlight or other heat sources.
 - Disconnect the power cord when storing the shaver.
 - Do not bend the power cord or wrap it around the shaver.
 - Keep the oil away from children.

Parts identification



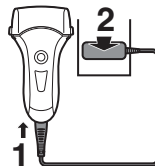
- A** Protective cap
- B** Outer foil section
 - ① Foil frame
 - ② System outer foil
 - ③ System outer foil release buttons
- C** Inner blades
- D** Main body
 - ④ Foil frame release buttons
 - ⑤ Power switch [0/1]
- E** Adaptor (RE7-51)
 - ⑨ Power cord
 - ⑩ Appliance plug
- F** Travel pouch
- G** Cleaning brush
- H** Oil
- ⑥** Battery capacity lamp
- ⑦** Charge status lamp
- ⑧** Appliance socket

Charge

Charging the shaver

- 1** Insert the appliance plug into the shaver.
- 2** Plug in the adaptor into a household outlet.

- Turn the shaver off before attaching.
- Charging is completed after approx. 1 hour.



Cord shaving

If you insert the appliance plug to the shaver and plug in the adaptor into a household outlet, you can use it even if the battery capacity is low.

- If the shaver does not work, continue charging it for approx. 1 minute.

Reading lamps when charging

While charging



The charge status lamp (➡) glows.

After charging is completed



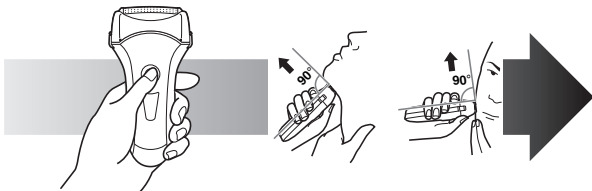
All lamps turn off.

- Recommended ambient temperature for charging is 5-35 °C. The battery may degrade the performance or may not charge under extreme low or high temperatures. The charge status lamp (➡) will blink when there is a problem with charging.

- When charging the shaver for the first time or when it has not been in use for more than 6 months, the charge status lamp (⇒) may not glow. It will eventually glow if kept connected.

Shave

Using the shaver



- Press the power switch.
- Hold the shaver as illustrated above and shave.

Start out shaving by applying gentle pressure to your face. Stretch your skin with your free hand and move the shaver back and forth in the direction of your beard. You may gently increase the amount of pressure as your skin becomes accustomed to this shaver. Applying excessive pressure does not provide a closer shave.

Caution

- If you press the power switch for more than 2 seconds, the sonic vibration cleaning mode is activated. **Page 5**
You cannot shave in this mode.
- Do not place your fingers on the power switch while using the shaver. This may cause the shaver to turn off or enter the sonic vibration cleaning mode.

Reading lamps when using

While using



- The charge status lamp (⇒) glows when using cord shaving.
- It will turn off approximately 5 seconds after operating the switch.

When the battery capacity is low

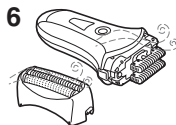
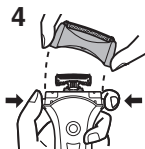


- The battery capacity lamp (⇐) blinks when operating the shaver.
- You can shave 2 to 3 times after the battery capacity lamp (⇐) blinks (This will differ depending on usage.)
 - A full charge will supply enough power for approx. 14 shaves of 3 minutes each.

Clean

Cleaning the shaver

1. Disconnect the power cord from the shaver.
2. Apply some hand soap and some water to the outer foil.
3. Press the power switch for more than 2 seconds to activate the sonic vibration cleaning mode.
 - The battery capacity lamp (↔) and the charge status lamp (➔) blink alternately.
 - After about 20 seconds, it will be automatically turned off, or you can turn it off by pressing the power switch.
4. Remove the outer foil section and press the power switch for more than 2 seconds to activate the sonic vibration cleaning mode and clean it with running water.
5. Wipe off any drops of water with a dry cloth.
6. Dry the outer foil section and the shaver completely.
7. Attach the outer foil section to the shaver.
8. Lubricate the shaver.



The mark on the left means suitable for cleaning under an open water tap.

Warning

Disconnect the power cord from the shaver before cleaning it in water to prevent electric shock.

Lubrication

To maintain shaving comfort for a long time, it is recommended that the oil provided with the shaver is used.

1. Switch off the shaver.
2. Apply one drop of oil to each of the outer foils.
3. Switch the shaver on, and run it for approximately five seconds.
4. Switch off the shaver, and wipe off any excess oil from the outer foils with a soft cloth.

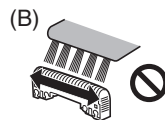
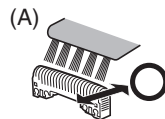


Cleaning with the brush

Clean the inner blades using the short brush by moving it in direction (A).

Clean the system outer foil, the shaver body using the long brush.

- Do not move the short brush in direction (B) as it will damage the inner blades and affect their sharpness.
- Do not use the short brush to clean the outer foils.

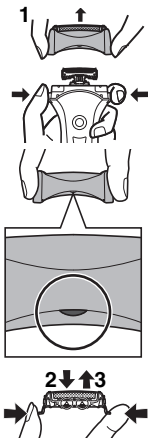


Replacing the system outer foil and the inner blades

system outer foil	once every year
inner blade	once every two years

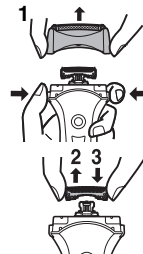
► Replacing the system outer foil

1. Press the foil frame release buttons and lift the outer foil section upwards.
2. Press the system outer foil release buttons and pull down the system outer foil.
3. Align the side of the foil frame that has a protrusion and the system outer foil mark (Δ) and securely attach together.
 - The system outer foil cannot be reversely attached.
 - Always insert the system outer foil to the foil frame when attaching to the shaver.
4. After turning the side of the foil frame that has a protrusion to the front, securely attach the outer foil section to the shaver until it clicks.



► Replacing the inner blades

1. Press the foil frame release buttons and lift the outer foil section upwards.
2. Remove the inner blades one at a time.
 - Do not touch the edges (metal parts) of the inner blades to prevent injury to your hand.
3. Insert the inner blades one at a time until they click.



► Replacement parts

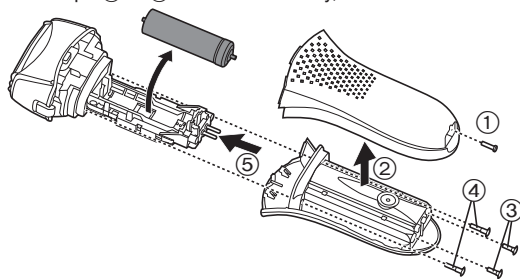
Replacement parts are available at your dealer or Service Center.

Replacement parts for	System outer foil	WES9087
ES-LC20	Inner blades	WES9068

Removing the built-in rechargeable battery

Remove the built-in rechargeable battery before disposing of the shaver. Please make sure that the battery is disposed of at an officially designated location if there is one. Do not dismantle or replace the battery so that you can use the shaver again. This could cause fire or an electric shock. Replace it at an authorized service center.

- Disconnect the power cord from the shaver when removing the battery.
- Perform steps ① to ⑤ and lift the battery, and then remove it.



For environmental protection and recycling of materials

This shaver contains a Lithium-ion battery.

Please make sure that the battery is disposed of at an officially assigned location, if there is one in your country.

Specifications

Power source	See the name plate on the adaptor. (Automatic voltage conversion)
Motor voltage	3.6 V DC
Charging time	Approx. 1 hour

This product is intended for household use only.

感謝您選用 Panasonic 刮鬍刀。使用前請詳讀所有說明。

重要

本刮鬍刀內建充電電池。請勿丟入火中、接觸熱源或在高溫的環境中充電、使用，或留置在高溫的環境中。

▶ 使用刮鬍刀

小心

外層網面是很薄的，如使用不當可能會破壞網面。請在使用刮鬍刀前檢查網面有否受損。如網面受損，請勿使用刮鬍刀，因可能會弄傷您的皮膚。

- 發生異常或故障時請停止使用。
- 請勿使用肥皂刮鬍子，或在以充電器操作時用水清洗。
- 請勿與家人或其他人共用刮鬍刀。
- 理想的使用環境溫度為 5-35°C。如果您在建議的溫度範圍外使用本產品，本產品就可能停止運作。
- 患有體能、感官或智力減退，或缺乏經歷和知識之人士（含小孩），在無人監護或未獲告知如何使用的情況下不得使用本產品。請勿讓小孩使用本產品。

▶ 為刮鬍刀充電

- 絕對不可在浴室或淋浴間使用充電器。
- 請勿使用本充電器（RE7-51）之外的任何電源線或充電器。
- 請以乾燥的手把充電器插入乾燥的家居電插座。
- 從家居插座拔掉充電器時請以手抓緊充電器，如您拉扯電源線，可能會損壞電源線。
- 請勿自行換電源線，電源線一但損壞應當廢棄本充電器，勿再使用。
- 理想的充電溫度為 5-35°C。

▶ 清洗刮鬍刀

警告

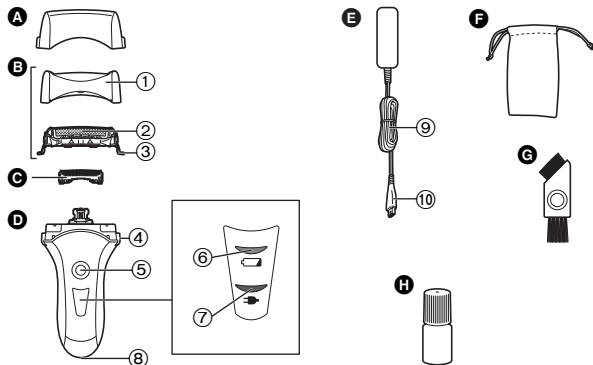
清洗刮鬍刀前，請從刮鬍刀拔掉電源線以防觸電。

- 將內層刀片保持在原有位置。如只有一塊內層刀片，刮鬍刀可能已經受損。
- 如您以水清洗刮鬍刀，請勿使用鹽水或熱水。切勿將刮鬍刀長時間浸泡於水中。
- 請以自來水或肥皂水稍微浸濕的軟布來清潔外殼。切勿使用稀釋劑、揮發油、酒精或其他化學品。

▶ 收納刮鬍刀

- 使用後將刮鬍刀收納在低濕度的地方。
- 請勿將刮鬍刀收納在陽光直接照射或其他熱源直接接觸的地方。
- 收納刮鬍刀時，請從刮鬍刀拔掉電源線。
- 切勿折曲電源線或把電源線環繞刮鬍刀。
- 請將潤滑油放在兒童接觸不到的地方。

部件說明



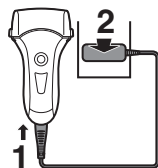
- A 保護蓋
- B 外層網面部分
 - ① 網層
 - ② 外層網面
 - ③ 拆除外層網面的按鈕
- C 內層刀片
- D 主體
 - ④ 網層拆除按鈕
 - ⑤ 電源開關 [0/1]
- E 充電器 (RE7-51)
- F 輕便旅行袋
- G 清潔毛刷
- H 潤滑油
- ⑥ 電池電量指示燈
- ⑦ 充電狀態指示燈
- ⑧ 充電插座
- ⑨ 電源線
- ⑩ 電源線插頭

充電

為刮鬍刀充電

- 1 將電源線插頭插入刮鬍刀。
- 2 將充電器插入家居插座。

- 裝上前，請關掉電源。
- 充電約 1 小時後完成。



插電刮鬍

即使電池電量低的時候，您仍可將電源線插頭接上刮鬍刀，然後插上家居插座來操作。

- 如未能操作刮鬍刀，請繼續充電約一分鐘。

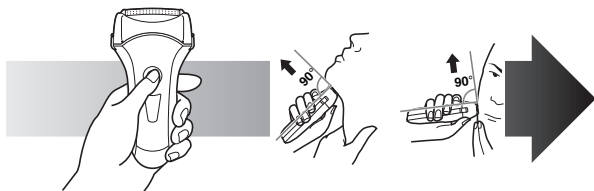
充電時請檢查各種指示燈



- 建議的充電環境溫度為 5-35°C。在極低或極高的溫度下，電池效能可能會降低或無法充電。充電發生問題時，充電狀態燈 (➡) 會閃爍。
- 刮鬍刀第一次充電時或未使用超過 6 個月，充電狀態燈 (➡) 可能不會亮起。如繼續保持連結，最後會亮起。

刮鬍

使用刮鬍刀



- 1 按下電源開關。
- 2 依照上圖示握著刮鬍刀使用。

將刮鬍刀輕輕按壓在您的臉上。以另一隻手按著皮膚，並以刮鬍刀來回刮鬍。當您習慣了這力道後，可慢慢加壓。過度加壓未必可刮得更徹底。

小心

- 如果按著電源開關超過 2 秒，便會啟動音波振動器清潔模式。

第 11 頁

您無法在這種模式中刮鬍子。

- 使用刮鬍刀時，切勿把手指放在電源開關上。因此舉可能會關掉刮鬍刀或啟動音波震動清潔模式。

使用時請檢查各種指示燈

使用時



- 使用插電刮鬍子時，充電狀態燈 (➡) 會亮起。
- 操作開關約 5 秒後會關閉。

電池電量不足時

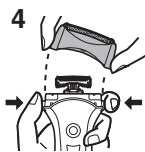
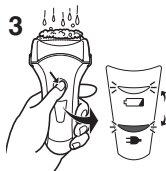


- 操作刮鬍刀時，電池電量指示燈 (◻) 會閃爍。
- 電池電量指示燈 (◻) 閃爍後，還可刮鬍子 2 至 3 次 (視使用情況而異)。
 - 在滿電的情況下，刮鬍刀可大約使用 14 次，每次 3 分鐘。

清潔

清洗刮鬚刀

1. 從刮鬚刀拔掉電源線。
2. 在外層網面上塗抹一些肥皂和水。
3. 按著電源開關超過 2 秒來啟動音波振動清潔模式。
 - 電池電量指示燈 (◁) 及充電狀態燈 (⇒) 輪流閃爍。
 - 約 20 秒後，振動器會自動關掉，或您可按電源開關來關掉。
4. 除去外層網面部分並按著電源開關超過 2 秒來啟動音波振動清潔模式，然後以流水沖洗。
5. 用乾布擦去水滴。
6. 讓外層網面部分和刮鬚刀完全乾燥。
7. 把外層網面部分安裝至刮鬚刀。
8. 請使用潤滑劑潤滑刮鬚刀。



左邊的標記表示適合使用自來水清洗。

警告

清洗刮鬚刀前，請從刮鬚刀拔掉電源線以防觸電。

潤滑劑

為可長時間舒適刮鬚，我們建議在刮鬚刀上使用供應商提供的潤滑油。

1. 關掉刮鬚刀。
2. 在每層外層網面上放上一滴油。
3. 啟動刮鬚刀，然後運作約五秒。
4. 關掉刮鬚刀，然後以軟布抹去外層網面多餘的油。

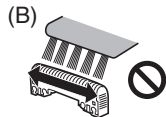
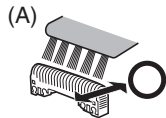


以毛刷清潔

利用毛刷依著 (A) 方向來清潔內層刀片。

利用長刷來清潔外層網面及刮鬚刀本體。

- 切勿以 (B) 方向來使用短刷，因此舉會損耗內層刀片，令刀片不鋒利。
- 切勿以短刷清潔外層網面。

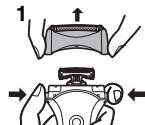


更換外層網面及內層刀片

外層網面	每年一次
內層刀片	每兩年一次

► 更換外層網面

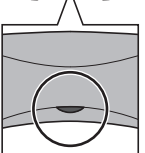
1. 按著網層拆除按鈕並向上提起外層網面部分。



2. 按著拆除外層網面的按鈕，拉下外層網面。



3. 對準具有凸出部分的網層側與外層網面標誌 (△)，然後牢固地安裝在一起。



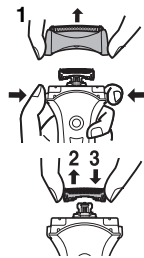
- 外層網面不能反方向安裝。
- 在將外層網面安裝到刮鬍刀上時，請務必將外層網面插入網層。

4. 將具有凸出部分的網層側轉到前面之後，將外層網面部分牢固安裝到刮鬍刀直至聽到「卡嗒」一聲。



► 更換內層刀片

1. 按著網層拆除按鈕並向上提起外層網面部分。
2. 拆掉內層刀片。
 - 切勿觸摸刀鋒（金屬部分）以免受傷。
3. 插入內層刀片直至聽到「卡嗒」一聲。



► 更換零件

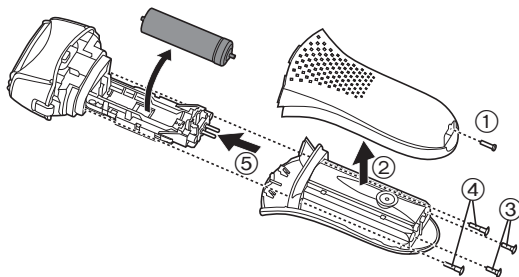
您可以在經銷商或服務中心取得更換零件。

ES-LC20 的更換零件	外層網面	WES9087
	內層刀片	WES9068

拆除內置充電電池

此刮鬍刀內的電池請勿由消費者自行替換。請委託 Panasonic 維修中心處理。下列的程序只適用於正確棄置電器前，把內置充電電池拆出。

- 拆除電池的時候，先從刮鬍刀拔掉電源線。
- 執行步驟 ① 至 ⑤ 以拉出並拆除電池。



環保及循環再用物資

此刮鬍刀內藏鋰電池。

如您的國家有指定認可棄置電池的地方，請確保將電池棄置於這些地方。

規格

電源	請參閱充電器上的銘板。 (自動變壓)
發動機電壓	3.6 伏特直流電
充電時間	約一小時

此產品只適於家居內使用。

Panasonic Corporation
<http://panasonic.net>