



## Operating Instructions Refrigerator

For Household Use



Model No.: **NR-BV361B**

### Contents

• Safety Precautions .....	2	• Prime Fresh+.....	12
• Usage Precautions .....	4	• Fridge compartment .....	13
• Installation .....	6	• Prime Fresh case .....	14
• Parts Identification .....	8	• Freezer compartment.....	15
• Operation Panel.....	9	• How to clean the Refrigerator .....	17
• Temperature Control.....	10	• Troubleshooting .....	20
• ECONAVI Operation.....	11	• Specifications.....	23
• Quick Freezing.....	11		

■ **NON-CFC**  
**NON-CFC MATERIALS** have been used for the refrigerant (R600a) and for the insulation (Cyclopentane), making this product better for the Earth's Ozone Layer.

Thank you for purchasing the Panasonic product.

- Please read these instructions carefully and follow safety precautions on page 2-5 before using this product.
- Please make sure the date and name of store of purchase are stamped in warranty card and keep it with these operating instructions.

# Safety Precautions

Please be sure to follow these instructions.



## WARNING

This sign means: It may lead to a serious injury or death.



These signs mean prohibited action.



This sign means required action.



This sign means the appliance must be earthed to prevent electric shock.



## CAUTION

This sign means: It may result in injury or property damage.



**iso-butane**

Risk of fire/flammable materials.

Otherwise, it may cause a fire, injury, electrical shock.



## WARNING

### In case of emergency:



- Maintenance work should only be carried out by a qualified technician.



- **Do not** store explosive substances, such as aerosol cans with a flammable propellant, etc. in the refrigerator.
- **Do not** use electrical appliances such as a deodorizer in the refrigerator. Leaked refrigerant may catch fire from a spark of the electrical contacts and may cause an explosion.
- **Do not** use electrical appliances inside the food storage compartments of the appliance, unless they are of the type recommended by the manufacturer.



- **Do not** disassemble, repair or modify the refrigerator by yourself. If you want to repair the refrigerator, please consult your dealer or authorized service center.
- **Do not** use mechanical device or other means to accelerate the defrosting process, other than those recommended by the manufacturer.

### When recycling the product:



- Before taking the refrigerator to be recycled, please remove all the door gasket to prevent locking a child in it.
- The warning labels mentioned above should be kept throughout the life of the refrigerator.
- The operating instructions should be handed over to any person who would use or handle the refrigerator whenever the refrigerator would be transferred to another location and delivered to a recycling plant.
- In regards to local laws, Cyclopentane is used for insulation of this refrigerator. When you throw away this unit, please discard it by proper method and do not dispose it by burning.

Otherwise, it may  
cause a fire, injury,  
electrical shock.



# WARNING

## For power plug and power cord:



- **Do not** plug or unplug with wet hands.
- **Do not** let the power cord or power plug be damaged.



- Disconnect power plug when cleaning.
- Only plug into a wall outlet of the correct rated voltage and current, and fully insert the power plug on its own.
- Reserve one socket for the refrigerator only. Avoid connecting many appliances to the same socket and unroll the full length of the power cord.
- Remove dust periodically from the power plug.
- If the power cord is damaged, it must be replaced by the manufacturer, its service agent or similarly qualified persons in order to avoid a hazard.
- If you detect burning smell, disconnect the power plug and ventilate the kitchen.
- **Stop** using the refrigerator and unplug the unit immediately if there is an abnormality or failure. Abnormality and failure examples:
  - Power cord or power plug is abnormally hot.
  - Power cord is deeply cut or deformed.
  - There is burning smell.
  - You can feel tingling electricity when you touch the refrigerator body.

## When using:



- **Do not** damage the cooling circuit (piping on the back).
- **Do not** touch the compressor and pipes, because of high temperature, that there is a risk of burn injury.
- **Do not** let any children hang onto the refrigerator's door, it may fall and injure the child.
- **Do not** place or store open containers of water on top of the refrigerator. Spilled water can cause electrical shocks or combustion.
- **Do not** place multiple socket-outlets or portable power supplies at the rear of the appliance.
- Keep ventilation openings, in the appliance enclosure or in the built-in structure, clear of obstruction.



- This appliance is not intended for use by persons (including children) with reduced physical, sensory or mental capabilities, or lack of experience and knowledge of using the appliance, unless they have been given supervision or instruction concerning use of the appliance by a person responsible for their safety.
- Children should be supervised to ensure that they do not play with the refrigerator.

## When installing:



- Danger can occur when the appliances is unbalanced, make sure the feet are secure and appliance is level.
- When positioning the appliance, ensure the power cord is not trapped or damaged.



- Ensure that the refrigerator is plugged into an earthed main socket.

Otherwise it may cause injury, accidents.



## CAUTION

### When opening/closing the doors:



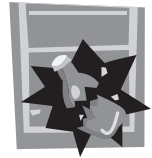
- While opening the refrigerator, be careful not to pinch other one's hand holding the door.
- Mind the gap between the doors. They may nip your hand while closing the door.



### When storing food:



- **Do not** freeze glass bottles, that there is a risk of injury. (If the liquid in a glass bottle is frozen, then the bottle may break and you may be injured.)
- **Do not** add a high impact on glass trays. (Otherwise those glass trays may break and you may be injured.)



### When moving the refrigerator:



- Hold the refrigerator tightly when transporting.
- Apply protective covering, etc. to floors with a fragile surface.

## Usage Precautions

### When opening/closing the doors:

- **Do not** refrigerate items which are bigger than tray or shelf, as the door will not close completely causing leakage of cool air.
- **Do not** open refrigerator frequently or leave it open for long time in order to prevent water dripping inside and waste energy.
- Frequently check the door gasket, it must be closed to the refrigerator's body completely.

### When cleaning:

- **Do not** clean the refrigerator with chemical substance or liquid. It will cause damage and have corrosion on the surface.
- Clean the Pan water evap located over the Compressor at the back of the refrigerator every three months to prevent the odour generated from humidity.



# Usage Precautions

## When using:

- When the power plug is disconnected, leave it for 5 minutes before plugging again. If not, the Compressor may not work.
- Adjust the temperature according to the actual operating condition for energy saving.
- The humidity inside the fresh case may condense so wipe it with a cloth periodically. Clean the fresh case once a month.
- If you will not be at home for several days and there are nothing refrigerated in the refrigerator, the plug should be disconnected for energy saving. When the refrigerator is not used for several days, it is necessary to take out all remaining food inside the refrigerator, clean and open the doors for a few hours to let the moisture inside the refrigerator dry out, avoiding mold and oxidation of components.
- The outside wall of refrigerator cabinet may sometimes get warm, especially just after installation. This is quite normal, and is due to the built-in Mullion Dryer Pipe which prevents sweating and radiates heat.
- When humidity is high, e.g. during rainy-season, condensation may appear on the surface of cabinet, especially around the door gasket. Wipe off the condensed water with a clean cloth.
- **Do not** keep the door open any longer than necessary, particularly in hot, humid weather.
- The top of the refrigerator is made of steel in order to prevent fire caused by external influences. **Do not** put things on top of the refrigerator to ensure this factor.



## When storing food:

- **Do not** place warm/hot foodstuff in the refrigerator.
- **Do not** overload the refrigerator. Gaps must be provided between foodstuffs to maintain the cooling effect.
- Store fruits and vegetables in Vegetable case, where trapped moisture helps preserve food quality for longer time periods.
- Drinking water and beverage bottles should be sealed to prevent odor contamination.
- Food stuff such as vegetables, fruits and fresh food should be wrapped or packed in a box or storage container before freezing.
- Meat and Fish should be put in the Freezer compartment if you want to store them for an extended period.
- Cover juicy food with tight lids, plastic film or foil.
- Cool hot dishes in compartment temperature before placing them in your refrigerator.



# Installation

## The distance requested for installation

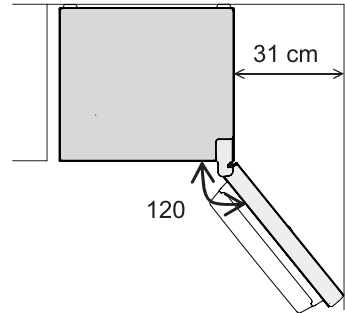
- 50 mm
- The top of the refrigerator is at least 50 mm from the ceiling.



- 20 mm
- The left and right sides of the refrigerator are at least 20 mm from the walls.

## Caution

- In case the refrigerator is placed near to walls, it is necessary to ensure that the space between the right side of the refrigerator and the wall is at least 31 cm. If this space is less than 31 cm, the doors may not be fully opened and the glass trays, Vegetable case, etc. could not be taken out.



- The back of the refrigerator is at least 50 mm from the wall.
- When using for the first time: clean the inside of the refrigerator.
  - Use a soft damp cloth to clean the refrigerator.
  - Rinse the Ice trays.
  - The smell of plastic could be smelled in the first time using the refrigerator. If you are worry about it, please ventilate the room.
- **Do not** locate the refrigerator in a humid place as rust may form and may cause electric leakage.
- **Do not** locate the refrigerator exposing to direct sunlight as the heat and sunlight will increase the temperature affecting the cooling capacity.
- **Do not** locate the refrigerator near heat source such as cooking stove or oven.
- **Do not** block the openings around the refrigerator.
- The refrigerator must be located in the place where there is good air circulation.
- In case of placing the refrigerator on an uneven surface, adjust the adjustable leg to make the refrigerator stands stably.

## LED lamp and grounding

- The refrigerator LED lamp, specially designed for this refrigerator, do not replace it by yourself. If you need replacement, please contact Panasonic service center.
- If the refrigerator plug has no ground wire, it should be connected with a grounding connection to prevent electrical hazard from electric leakage.

## Moving or shifting

### ※ Before moving and transporting

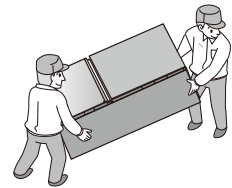
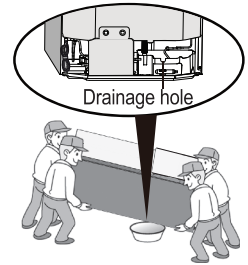
- 1 Remove any food items and dispose of any ice cubes or water that remain in the refrigerator.
- 2 Unplug the refrigerator.
- 3 Adjust the Adjuster bolts (left and right) so that they do not touch the floor.
- 4 Place a container underneath the drainage hole, then slowly tilt the refrigerator backward to drain water from the drainage hole. This action requires 4 or more people, of which 2 people lift the front of the refrigerator to prevent the refrigerator from sliding and avoiding the risk of accidents.

### ※ How to move and transport

- At least 2 people are required to transport the refrigerator.
- Each person lifts a corner of the refrigerator.
- Do not transport by holding the refrigerator doors.

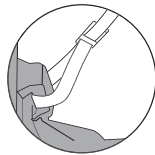
### Caution

- When transporting, use tape to secure the refrigerator doors and avoid letting the doors open by itself.
- Do not place the refrigerator on its side when transporting, as this may cause damage to the refrigerator.
- After installation, wait at least 4 hours before plugging in the power to ensure that the gas and oil in the Compressor are in a stable state.



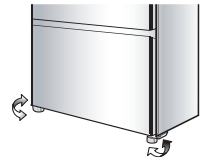
## Have any measures taken against tipping due to earthquakes?

In order to prevent the refrigerator from tipping due to earthquakes, permanently fix it by using belts, etc.



## Fix the refrigerator.

Turn the Adjuster bolts (right and left) until they reach the floor to stabilize the refrigerator.



## Refrigerator doors should not be opened during the interior cooling process.

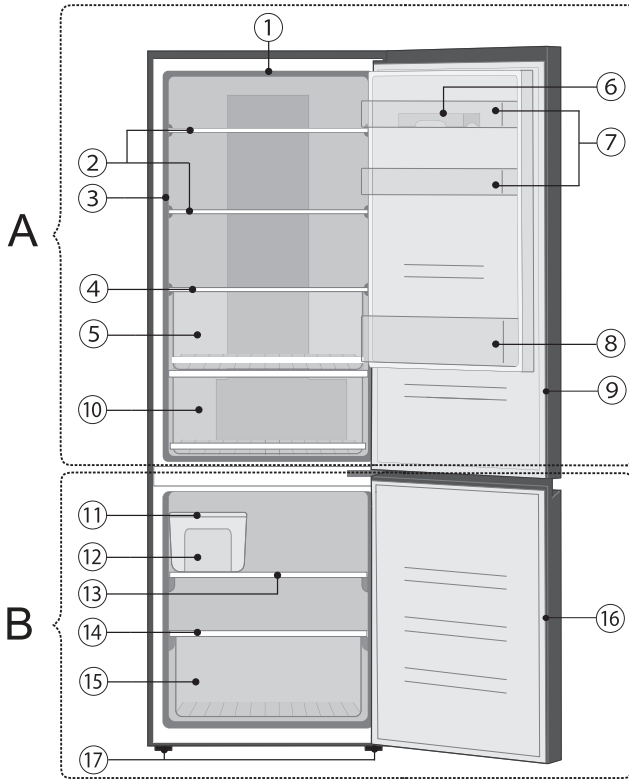
The doors should not be opened until the interior has been cooled down sufficiently. (Warm air flowing into the interior will block the cooling function.)

### Please wait until the interior has cooled down.

- The refrigerator may take at least 4 hours (or longer especially in summer when the ambient temperature is high) of continuous running to cool down the interior, in the condition of no food items inside and the doors are not opened.
- Depending on ambient temperature and usage condition, it may take 24 hours to cool down the interior and achieve the correct temperatures.



# Parts Identification

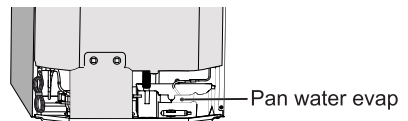


## A-Fridge compartment

- ① LED of Fridge compartment
- ② Glass tray of Fridge compartment  
(Quantity: 2 pcs)
- ③ Operation Panel
- ④ Glass tray of Vegetable case
- ⑤ Vegetable case
- ⑥ Egg tray
- ⑦ Door shelf (Quantity: 2 pcs)
- ⑧ Bottle shelf
- ⑨ Door gasket of Fridge compartment
- ⑩ Prime Fresh case (LED of Blue Ag)

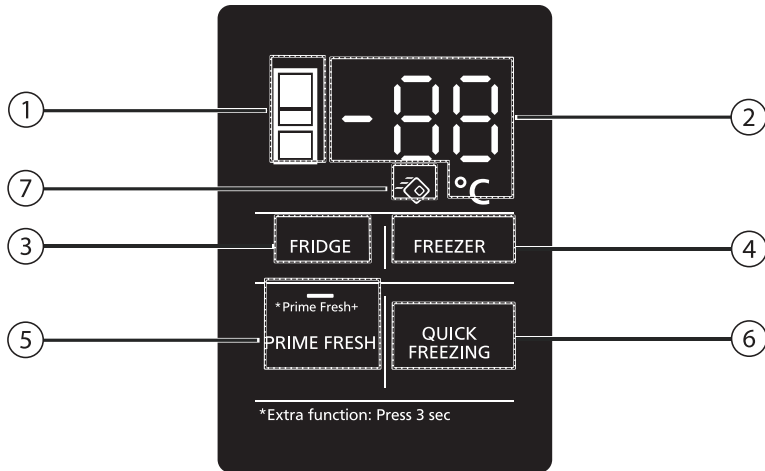
## B-Freezer compartment

- ⑪ Ice maker
- ⑫ Ice box
- ⑬ Glass tray of Freezer compartment
- ⑭ Glass tray of Freezer case
- ⑮ Freezer case
- ⑯ Door gasket of Freezer compartment
- ⑰ Adjuster bolts



Product view from behind

# Operation Panel



- ① LED of compartments: the icon of the respective compartment will light up when the compartment is selected.
- ② Temperature display area: display the temperature of Fridge compartment, Freezer compartment, Prime Fresh case.
- ③ Temperature control button of Fridge compartment.
- ④ Temperature control button of Freezer compartment.
- ⑤ Temperature control button of Prime Fresh case, control button and LED of Prime Fresh+.
- ⑥ Control button of Quick Freezing.
- ⑦ LED of Quick Freezing.

## Remark

- On the Operation Panel: “\*Extra function: Press 3 sec”, means that you need to press and hold the “PRIME FRESH” button for 3 seconds when you want to start the extra functions.
- Under normal conditions, the Operation Panel will display the latest setting status. When you press a button, the refrigerator will generate a sound and begin to allow setting changes.
- When first plugged in, the Operation Panel will display the introduction of modes and the temperature of compartments for about 8 seconds. Buttons will not be active during this period of time. After 8 seconds, the Operation Panel can be adjusted normally.




# Temperature Control

- Default setting temperature for Fridge compartment is 4 °C, Prime Fresh case is -3 °C and Freezer compartment is -20 °C. The temperature setting for each compartment can be adjusted.
- The temperature setting range of the Fridge compartment is 1 °C ~ 7 °C, of the Prime Fresh case is -5 °C ~ 4 °C (the temperature for soft freezing is -5 °C ~ -1 °C, and the temperature to use the Prime Fresh case as the Fridge compartment is 0 °C ~ 4 °C), of the Freezer compartment is -23 °C ~ -15 °C.
- The temperature inside the refrigerator will vary depending on the ambient temperature, installation status, usage conditions and amount of food.
- Due to different testing methods and tools, the actual temperature may differ from the displayed temperature.
- This refrigerator is equipped with a processor to control the temperature inside the refrigerator. When the ambient temperature changes, the Compressor runs or stops, the doors are opened or closed, the temperature inside the refrigerator and the temperature setting will have a slight difference.

## ■ Temperature setting instructions

### 1. Display the current temperature

Press the following icons to display the current temperature of these compartments: Fridge compartment, Prime Fresh case, and Freezer compartment. The LED indicates position and the LED indicates temperature of the compartment will light on when selected.

Icon	Compartment	LED indicates position of the compartment	LED indicates temperature of the compartment
FRIDGE	Fridge compartment		4 °C
PRIME FRESH	Prime Fresh case		-3 °C
FREEZER	Freezer compartment		-20 °C

### 2. Temperature setting

After pressing the icon of compartment (Fridge, Prime Fresh, Freezer) to display the current temperature, press again to start the temperature setting process. Then, LED indicates position of the compartment and LED indicates temperature of the compartment will flash. Continue to press the icon of that compartment to select the desired temperature level. Each time the button is pressed, the temperature will increase by 1 °C within temperature setting range of the compartment. If the selection exceeds the compartment temperature range, the Operation Panel will display the temperature return to the lowest level in the above range.

### 3. Complete temperature setting

After completing the temperature setting, press another button to finish and save the setting that you have just made. Or if no other button is pressed within 5 seconds, the Operation Panel will save the setting and return to stand by mode.

# ECONAVI Operation

The refrigerator detects the opening and closing of the refrigerator door to control operations automatically to ensure maximum energy saving.<sup>(\*)</sup>

## ■ ECONAVI Operation

- The refrigerator learns the lifestyle patterns of your family from door opening and time periods of infrequent use to maximize energy efficiency.
- The refrigerator learns your lifestyle patterns from the previous 3 weeks of use and uses that data from the 4<sup>th</sup> week onwards.

## ■ Settings for enabling ECONAVI operation

- ECONAVI Operation is enabled automatically when the temperature control for both the Fridge compartment and the Freezer compartment is set to 4 °C and -20 °C, respectively.
- ECONAVI Operation does not operate if the Quick Freezing is in operation.
- It is not possible to force to start of the ECONAVI.

<sup>(\*)</sup>The effectiveness of the ECONAVI is dependant on the ambient temperature, the number of times the refrigerator door is opened and closed and the state in which food is stored.

# Quick Freezing

When Quick Freezing is set, the refrigerator will reduce the temperature quickly for better performance of preserving food and speed up the ice making.

## ■ How to operate the Quick Freezing



LED is on: Quick Freezing is operated.  
LED is off: Quick Freezing is not operated.

- Touch the “Quick Freezing” button twice to start Quick Freezing. Then, the LED of Quick Freezing turns on.
- If you want to stop the Quick Freezing operation immediately, press the “Quick Freezing” button twice until the LED of Quick Freezing turns off.

## Remark

- The Quick Freezing will stop automatically after running for 150 minutes and return to normal mode. (The LED of Quick Freezing turns off.)
- The LED of Quick Freezing flashing means that the defrosting system is now working. Quick Freezing will start right after the defrosting operation is finished.
- The temperature of Freezer compartment will return to its previous setting when the Quick Freezing ends.
- The Prime Fresh+ will be stopped when Quick Freezing is turned on.

# Prime Fresh+

When Prime Fresh+ is set, the Prime Fresh case will reduce the temperature quickly for better performance of preserving food.

## ■ How to operate the Prime Fresh+



LED is on: Prime Fresh+  
is operated.  
LED is off: Prime Fresh+  
is not operated.

- Press and hold the “Prime Fresh+” button for 3 seconds to start the Prime Fresh+. Then, the LED of Prime Fresh+ will turn on.
- If you want to stop the Prime Fresh+ operation immediately, press and hold the “Prime Fresh” button for 3 seconds. Then, the LED of Prime Fresh+ will turn off.

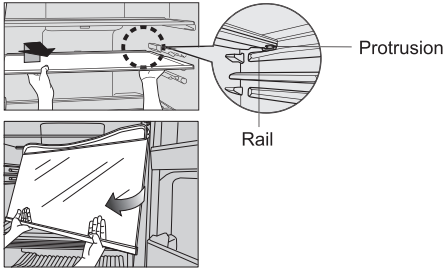
### Remark

- Prime Fresh+ will stop automatically after running for 105 minutes (when the ambient temperature is 18 °C or less) or between 145 ~ 150 minutes (when the ambient temperature is higher than 18 °C) and return to normal mode. (The LED of Prime Fresh+ turns off.)
- The LED of Prime Fresh+ flashing means that the defrosting system is now working. The Prime Fresh+ will start right after the defrosting operation is finished. The temperature of the Prime Fresh case will return to its previous setting when Prime Fresh+ ends.
- The Quick Freezing will be stopped when the Prime Fresh+ is turned on.
- Prime Fresh+ will not start when the temperature of Prime Fresh case is being set between 0 °C ~ 4 °C. If you press and hold the “Prime Fresh” button while the temperature of the Prime Fresh compartment is being set between 0 °C ~ 4 °C, the refrigerator will generate warning sound.
- While the Prime Fresh+ is turned on, if the temperature of the Prime Fresh case is being set between 0 °C ~ 4 °C, the Prime Fresh+ will be stopped and the LED of Prime Fresh+ turns off.

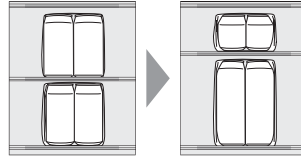
# Fridge compartment

The position of the glass tray of Fridge compartment can be changed

- 1 Lift up the back of the tray and pull it forward. Once the protrusions of the tray are unhooked from rails, tilt the tray and remove it.



- 2 Insert the tray in the desired position by reversing the steps.



- Glass trays are heavy. Please handle them with care so that they do not fall and cause any damage or injury.

## Tips for food preservation

### ■ Do not over stock too many food items

When there are too many food items and there is no space for cool air circulation inside the refrigerator, the cooling capacity will be affected. Provide sufficient space between foods inside the Fridge compartment!

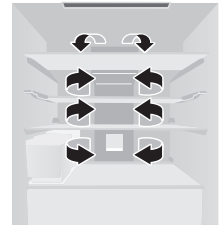


No wasting cool air inside the refrigerator is the key to keeping food fresher for longer!

### ■ Do not block the cool air outlet with food items

If the cool air does not spread into every corner of compartments, then the interior will not be sufficiently cooled and more electricity will be consumed. Therefore, do not place food items in front of the cooling air vents<sup>(\*)</sup> and block the air circulation in the refrigerator.

<sup>(\*)</sup>The cooling air vents are located on the duct inside the Fridge compartment.



# Prime Fresh case

## Using Prime Fresh case

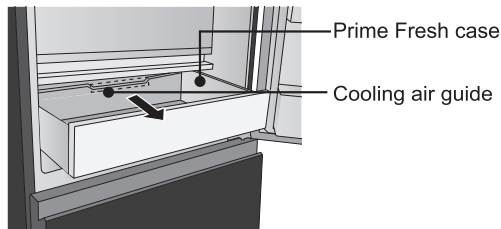
Approx.  $-5^{\circ}\text{C}$  ~  $-1^{\circ}\text{C}$

- This case is suitable for storing fresh food, such as meat or fish. Compared to storing in the Fridge compartment, the storage life of meat or fish is extended.
- When food is frozen too much.  
Sliced raw fish or meat may be frozen too much. Set the temperature to higher than  $-3^{\circ}\text{C}$  to prevent food from over frozen.
- When food is not partially-frozen.  
Depending on the type of food, such as a large block of meat or a large fish, or the food fullness of the case, the storage conditions, and the ambient temperature, food may not be partially frozen as it intended. If this is the case, then set to the lowest temperature of  $-5^{\circ}\text{C}$ .
- Do not over stock with too many food items.  
When there are too many food items and there is no space for cool air circulation inside the refrigerator, the cooling capacity will be affected. Provide sufficient space between foods inside Prime Fresh case.
- When storing food in large amount, e.g. a large block of meat, a large fish or a chicken, it is advisable to place the food at the center of the Prime Fresh case to optimize the cooling performance.
- When the temperature of the Prime Fresh case is set at  $0^{\circ}\text{C}$  ~  $4^{\circ}\text{C}$ , the Prime Fresh+ will not operate in order to prevent food spoilage.
- Do not block the cool air outlet with food items inside the Prime Fresh case.  
If the cool air does not spread into every corner of Prime Fresh case, then the interior will not be sufficiently cooled and the food may be affected. Therefore, food should not be placed in front of the Cooling air guide (on the Prime Fresh case) to prevent blocking the air circulation inside the case.



### Easy to cut.

The partially -  
frozen foods is  
easy to cut!  
It comes in handy



# Freezer compartment



- A lot of frozen food and cooked meal can be stored.

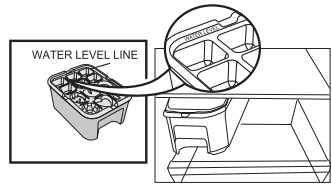
## Three tips for freezing food and locking in the flavour...

1. Freeze thin and small items of food quickly
2. Fully sealed
3. Do not refreeze

## How to make ice cubes with Ice maker

### STEPS

- 1 Fill water in the Ice tray till the Water Level Line.
- 2 Put the Ice tray inside Freezer compartment, wait until ice is made.
- 3 Take ice cubes out of the Ice tray to use.



### Remark

- Do not cover the Ice cube tray to speed up the time of making ice.
- If you want to use a lot of ice cubes, store ice cubes in the Ice box below the Ice cube tray.
- Do not pour water into Ice box for making ice, otherwise the box may crack.

# Freezer compartment

## To use the Ice maker in comfort



Please use only drinking water for Ice making.



Do not put liquids such as the following into Ice maker.

(These liquids may damage the Ice maker).

The hardness of water must be 100 mg/L or less.



Drinking water



Juice, etc.



Sports drinks



Carbonated beverages



Hot water

### Tips

- The hardness of water must be 100 mg/L or less. The minerals may appear as white floating particles. They are not harmful.

### Request

- Do not pour water directly into the Ice box to make ice. (Otherwise, the Ice box may be broken).
- Do not put food or other things into the Ice box.
- When using for the first time or when not being used after a long time, the Ice tray and Ice box may smell unpleasantly or collect dust. Remember to clean the Ice tray and Ice box before proceeding to make ice.

### Ice maker cycle time will be longer in the following cases.

- The first time using the refrigerator. (It will take at least 24 hours since the Ice making function only starts after the inside of the refrigerator is cool enough).
- When the refrigerator doors is frequently opened.
- When the refrigerator doors is ajar.
- When a large amount of food is stored at once.
- When the ambient temperature is low during winter or high during summer.
- When a power failure occurs.

# How to clean the Refrigerator

Before cleaning or conducting maintenance, be absolutely sure to disconnect the power plug from the power outlet. Do not connect or disconnect the power plug with wet hands. When the power plug is disconnected, leave it for 5 minutes before plugging again. If not, the compressor may not work.

## Clean the refrigerator immediately after it is stained!

Wipe off stains on the interior surfaces quickly before they harden. In particular, cooking oil or lard may cause plastic to crack and citrus juice may cause the refrigerator to become discolored. When stains cannot be removed easily, wipe them with a cloth lightly soaked in neutral kitchen detergent. Then, wipe with a cloth lightly dipped in water.



## Clean the detachable items occasionally.

Clean the Ice tray once a week. As a guide, remove the trays, door shelves, etc. and wash them by immersing them in lukewarm water every three months.

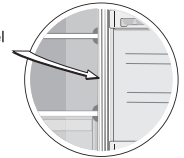
## Clean the door gasket at least once a month.

Clean by wiping with a soft damp cloth. Lubricated gel has been applied to the door gasket on the hinge side of the refrigerator be careful not to wipe it off.

Rub the door surface with a soft damp cloth



Point where lubricated gel was applied

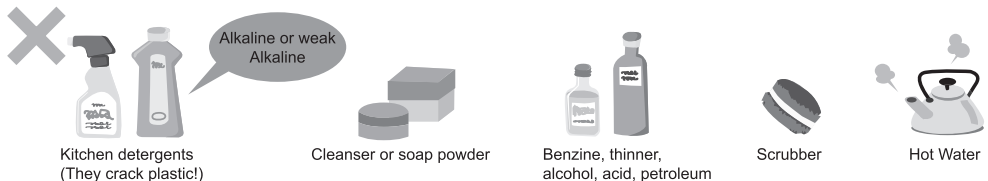


### Notice

The door gasket is replaceable by an authorised service agent. If the door gasket comes off while cleaning, it can be pushed back into the groove.

### Request

Do not use the following items for cleaning. (Otherwise, the surface will be scratched or corroded.)



# How to clean the Refrigerator

## Door shelf/Bottle shelf

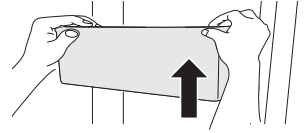
Once every 3 months

### ■ Removing

Lift it upward, alternating between the right and left side.

### ■ Attaching

Place it on both supporters, and then press until it reaches the end of supporters.



## Tray

Once every 3 months

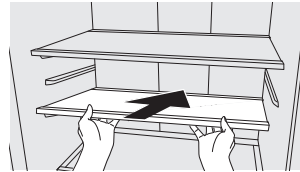
### ■ Removing

Lift up the back of the tray and pull it forward. Once the protrusions of the tray are unhooked from the rails, tilt the tray and remove it.



### ■ Attaching

Push the tray until it reaches the end lock.

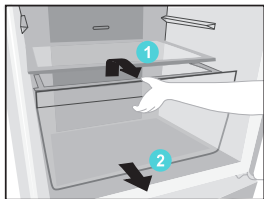


## Remark

- For easier to take the glass trays out from the refrigerator, please remove door shelves and bottle shelves first.
- In case of attaching the tray and it does not lock, make sure that you did not attach it into it the wrong tray.
- Trays made of glass are heavy. Please handle them with care so that they do not fall and cause any damage or injury. For attaching trays, hold them with the protrusion side down and firmly insert.

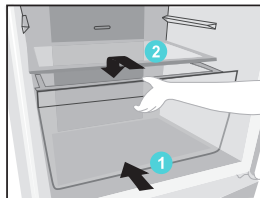
### ■ Removing

- 1 Pull the Vegetable case/Freezer case forward until it reaches the end.
- 2 Gently lift the front of the Vegetable case/Freezer case to remove it completely.



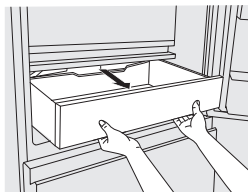
### ■ Attaching

- 1 Insert the Vegetable case/Freezer case into the shelf.
- 2 Gently lift the case and push forward until it reaches the end.



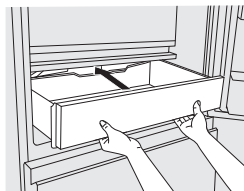
### ■ Removing

- 1 Fully open the door of the Fridge compartment.
- 2 Pull the case forward until it reaches the end and gently lift the front of the case to remove it completely.



### ■ Attaching

- 1 Insert the case into the shelf.
- 2 Gently lift the case and push forward until it reaches the end.



# Troubleshooting

Before you call for service, please check the following steps:

**The refrigerator does not operate.**

- Check that the power plug and its socket are in good condition.
- Check if there is any problem on main fuse and electrical system of the house.
- Check by unplug and wait for 5 minutes before plugging it back in.

**The refrigerator does not cool enough.**

- Check to be sure that LED in Operation Panel is displayed at proper position.
- Check to see if the refrigerator is overloaded with stuff or there is any hot foodstuff refrigerated inside.
- Is the refrigerator exposed directly to sunlight or heat source?
- Is the refrigerator door completely closed?
- Is the refrigerator door opened frequently?

**Dew, frost appears.**

**Outside**

- When the air humidity is high, there is a chance that moisture will condense on the refrigerator surface, around the door gasket or on the door surface. This situation will stop if the air humidity decreases. Please wipe it up with dry cloth.

**Inside**

- Is the door closed firmly?
- Is the door being opened and closed too frequently?
- Condensation inside the refrigerator can also be caused by leaving high-humidity foods uncovered or unwrapped.
- When the humidity is high, the door is open for a long time, when the refrigerator contains too much food, food items block the cool air outlet or makes too much ice, frost may form inside the Freezer compartment. This is normal. Please wipe with dry and soft cloth.



**The refrigerator generates noise.**

- Check if the refrigerator is located on a stable floor or is installed properly.
- Check if there is any object in contact with the refrigerator.
- Cracking sound within caused by the parts adjusting temperature which is normal.
- After installation, the refrigerator may make loud noise. The noise will be less when the refrigerator has been cooled.
- There may be a whistling sound inside the refrigerator when opening and closing the door. This is caused by the air outside being drawn in through the pipe on the backside of the refrigerator to better balance the air circulation inside the unit.
- Check if evap pipe in contact with Pan water evap.

# Troubleshooting

**The inside is smelling.**

- Do you store food with dry odor without wrapping it?

**The back and sides of the refrigerator are warm and hot.**

- Because the refrigerator is equipped with the dew prevention and heat radiation tubes, the back and sides of the refrigerator get warmer when operating.
- The back and side plates may get warmer especially when starting up or if the door is frequently opened and closed.

**The normal sounds of refrigerator.**

- When the refrigerator starts operation, the sound like water flowing and boiling water is created. This is the sound of the cooling liquid.
- The noise is generated when the automatic defrost system operated.
- The dilatation of the details inside the refrigerator in the cooling process can cause sound "crack-crack".
- You may feel that the operation sound is larger because the compressor operates in high-speed under the following conditions: the refrigerator does not cool fully on the occasion such as using it for the first time, opening/closing the door too frequently, the surrounding temperature is high. The sound becomes more quiet after cooling fully.

**Food becomes frozen.**

- Do you put the food near cold air holes?
- Do you adjust the temperature control to less than 4 °C for the Fridge compartment and/or -3 °C for the Prime Fresh case?  
→ Adjust to a higher temperature.
- Do you put food in Prime Fresh case?

**The Operation Panel flashes.**

- Are you adjusting the temperature of your refrigerator?  
→ Flashes during adjusting. Please complete the setting or the Operation Panel will stop flashing after 5 seconds.

**LED of Blue Ag.**

**The LED still turns on when the door is closed.**

- After closing the door, the LED of Blue Ag may continue to operate. This is normal due to the operation of the Blue Ag bactericidal mode.

# Troubleshooting

## Error display on Operation Panel.


- U10: Warning if doors are opened too long.  
→ Check that the doors are closed properly.

- The letter "H" and two digits are displayed on Operation Panel. For example: H01  
→ Please contact the Panasonic service center for support.

## LED does not turn on.

- Please contact Panasonic service center.

# Specifications

Model No.		NR - BV361B
Freezer Star Rating		
Capacity (L) Gross/Storage (IEC 62552:2007)	Total	370 / 332
	Freezer	121 / 99
	Fridge, Prime Fresh	249 / 233
Outside Dimensions Width x Depth x Height (mm)		601 x 653 x 1790
Net Weight (kg)		57
Refrigerant Type		R600a
Cooling System		Non-frost cooling.
Rated Voltage (V) Rated Frequency (Hz)		Refer to the rating label attached inside the cabinet.





## 規格

型號		NR-BV361B	
冷凍等級		* ** *	
容量 (公升) 總容量/淨容量 (IEC 62552:2007)	合計	370 / 332	
	冷凍室	121 / 99	
	冷藏室, -3°C微凍結構	249 / 233	
尺寸 闊 × 深 × 高 (毫米)		601 × 653 × 1790	
淨重 (kg)		57	
雪種類型		R600a	
製冷系統		風冷式。	
額定電壓 (伏特) 額定頻率 (赫茲)		請參考雪櫃門上的額定標籤。	

操作面板上顯示  
錯誤。

- U10：如果門打開時間過長，則發出警報。

→ 檢查櫃門是否正確關閉。

- 字母「H」和兩位數字顯示在操作面板上。

例如：H01

→ 請聯繫Panasonic服務中心尋求支援。

LED燈無法打開。

- 請聯繫Panasonic服務中心。

內部出現異味。

● 是否放置沒有包裹，會發出氣味的食物？

雪櫃的背面和側面溫暖而灼熱。

● 由於雪櫃具有防結露和發熱管設備，雪櫃運行時櫃體背面和側面溫度較高。  
● 當製冷啟動或櫃門經常關閉時，背部和兩側發熱會更為明顯。

雪櫃的正常聲音。

● 當雪櫃開始運行時，會聽見像流水或沸水的聲音。這其實是冷媒流動的聲音。  
● 當自動除霜系統工作時會產生噪聲。  
● 雪櫃內附件在製冷過程中膨脹會發出「劈啪」破裂聲。  
● 雪櫃縮機在以下情況下高速運作時，您可能感覺運作聲音變大：雪櫃在首次使用，過於頻繁地開閉櫃門或環境溫度過高等情況下未完全冷卻。當雪櫃完全冷卻後，聲音會變得更為安靜。

食物結冰。

● 是否把食物放近冷風口處？  
● 冷藏室的溫度控制是否調節為 4 °C 以下及/或 -3 °C 微凍結格  
的溫度控制是否調節為 -3 °C ？  
→ 調節到更高的溫度。  
● 您是否將食物放在了 -3 °C 微凍結格內？

操作面板閃爍。

● 您是否在調節雪櫃的溫度？  
→ 調節過程中閃爍。請完成設定，否則操作面板將在 5 秒鐘後停止閃爍。

Blue Ag 的 LED 燈。

當櫃門關閉時，LED 燈仍然亮起。

● 關上櫃門後，Blue Ag 的 LED 燈可能會繼續運行。由於 Blue Ag 滅菌模式的操作，這是正常現象。

## 雪櫃使用說明指引

在尋求維修服務前，請檢查下列事項：

- 檢查並確保插頭及其插座的狀況良好。
- 檢查屋內的主保險絲和電力系統有否出現問題。
- 檢查時請拔除插頭，等待至少5分鐘後再重新插回。

雪櫃不能操作。

- 檢查確保控制面板上的指示燈在正確位置顯示。
- 檢查雪櫃是否負荷過多或冷藏了任何熟食。
- 雪櫃是否直接曝曬在陽光下或靠近熱源？
- 雪櫃門是否完全關上？
- 雪櫃門是否過於頻繁地開關？

雪櫃溫度不夠低。

外面

- 當環境濕度過高時，雪櫃表面、櫃門封邊周圍或櫃門表面可能出現水珠。空氣濕度降低時，這種情形將消失。請用乾布將水珠擦掉。

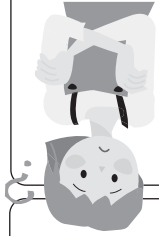
出現水珠、結霜。

裡面

- 請檢查雪櫃門是否緊密關閉？
- 雪櫃門是否過於頻繁地開關？
- 雪櫃內結露也可能是由於高濕度食物未蓋或未包裝而引起的。
- 如果環境濕度過高、長時間打開櫃門、雪櫃儲存過多食物、食品堵塞了冷氣出口或製作了太多冰塊，冷凍室內部就可能結霜。這是正常現象。請用乾燥的軟布抹掉。

雪櫃發出噪聲。

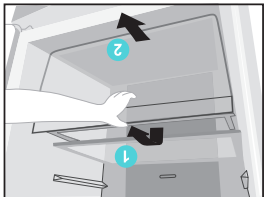
- 檢查雪櫃是否已穩固放置或正確安裝。
- 檢查是否有任何物體與雪櫃接觸。
- 相應部件溫度調整導致雪櫃內的碎裂聲音屬正常現象。
- 安裝後，雪櫃可能會發出較大的噪聲。
- 當雪櫃完成製冷後，噪聲將降低。
- 打開和關閉門時，雪櫃內部可能會發出嘯叫聲。這是由於外部空氣通過雪櫃背面的管道吸入，以更好地平衡設備內部的空氣流通所致。
- 檢查與鍋水接觸的蒸發管是否蒸發。



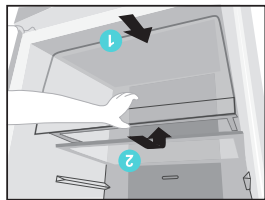
## ■ 取出 疏果格/冷凍格

每三個月一次

- 取出
- 1 將疏果格/冷凍格向外拉出直至到達盡頭。
  - 2 稍微抬起疏果格/冷凍格前端，然後完全取出。



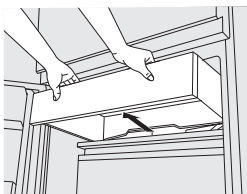
- 裝上
- 1 將疏果格/冷凍格插到支架上。
  - 2 稍微抬起後向裏推入，直至到達盡頭。



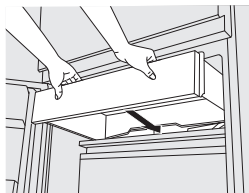
## ■ 取出 -3°C微凍結格

每三個月一次

- 取出
- 1 完全打開冷藏室的兩扇櫃門。
  - 2 向外拉出直至到達盡頭，然後稍微抬起正面以將其完全取出。



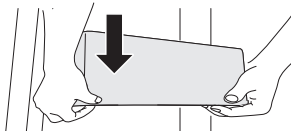
- 裝上
- 1 將 -3°C微凍結格插到支架上。
  - 2 稍微抬起後向裏推入，直至到達盡頭。



## 如何清洗雪櫃

櫃門架/置瓶架

每三個月一次



■ 取出

抓住左右兩側交替向上抬起。

■ 裝上

置於兩邊的支架上，向裏推入，直至到達盡頭。

托盤

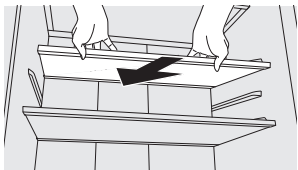
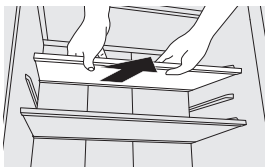
每三個月一次

■ 取出

向上抬起托盤並往前拉。打開托盤與滑軌間的鎖扣，傾斜托盤並取出。

■ 裝上

托盤向裏推入，直至到達盡頭。



注意

- 為了便於將玻璃托板從雪櫃中取出，請先拆下儲蛋托與置瓶架。
- 如在裝回托盤時發現無法扣緊，請檢查確認是否安裝錯誤的托盤。
- 托盤是由玻璃製成而且很重。
- 請小心搬運，以免掉落並造成任何損壞或傷害。
- 要裝托盤時，將鎖扣側朝下握住並牢固插入。

# 如何清洗雪櫃

清潔或進行維護之前，請務必確保從電源插座上拔下電源插頭。切勿用濕手連接或斷開電源插頭。

當拔掉插頭後，至少等候 5 分鐘，才能再次插上電源。否則，可能會導致壓縮機停止運作。

雪櫃弄髒後立即清洗！

在污物凝結之前，迅速擦去污漬。特別是食用油或豬油可能會導致塑料破裂，柑橘汁可能會導致雪櫃變色。當污漬無法輕鬆擦除時可用柔軟的布蘸溫水進行清潔。可用柔軟的布蘸溫水進行清潔。

偶爾清潔可拆卸物品。

一週清理一次製冰器。根據指引，請每三個月取下托盤、門架等，然後將其浸入溫水中清洗。

每個月至少清理一次雪櫃門邊。

用柔軟布擦拭清潔。

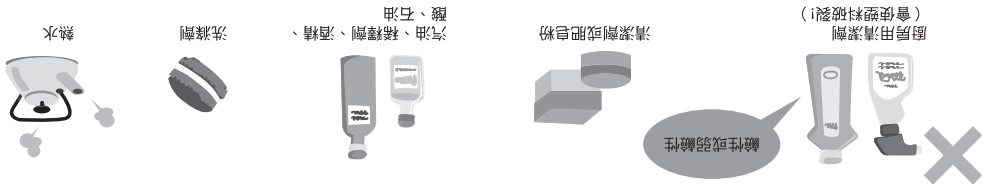
石油凝膠已塗在設備鉸鏈側的門封邊上，注意不要擦拭掉。

## 注意

雪櫃門封邊可由授權的服務代理商進行更換。清潔時，如果門封邊脫落，可將其推回到凹槽內。

## 要求

切勿使用以下物品進行清潔。（否則，表面會被刮擦或腐蝕。）



塗上石油凝膠的位置。



用柔軟的濕布  
擦拭櫃門表面

## 舒適地使用製冰器

- 請僅使用飲用水製冰。
- ✗ 切勿將以下液體放入製冰器中。（此類液體可能會損壞製冰器）。

飲用水



水的硬度必須為  
100 毫克/升或  
更低。

果汁等



運動飲料



碳酸飲料



熱水



### 小貼士

- 水的硬度必須為 100 毫克/升或更低。礦物質可能以白色漂浮顆粒形式出現。它們無害。
- 切勿將水直接倒入儲冰盒中製冰。（否則，儲冰盒可能會破裂）。
- 切勿將食物或其他物質放入儲冰盒。
- 首次使用或長時間不使用時，冰塊盤可能有異味或積塵。請記住，在繼續清洗製冰之前先清洗冰塊盤。

### 要求

- 在以下情況下，製冰週期會更長。
- 第一次使用雪櫃。（至少需要 24 小時，因為製冰功能僅在雪櫃內部充分製冷之後才開始）。
  - 雪櫃門經常打開時。
  - 當雪櫃門半開時。
  - 冬季環境溫度低或夏季環境溫度高時。
  - 一次性儲存大量食物時。
  - 冬季環境溫度低或夏季環境溫度高時。
  - 發生停電時。

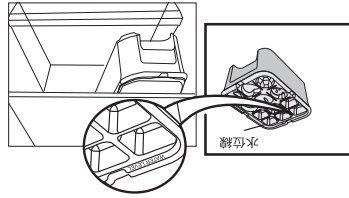
如何用製冰器製作冰塊

步驟

- 1 在冰塊盤中注水，直到水位線。
- 2 將冰塊盤放入製冰室，等待製冰成功。
- 3 從冰塊盤中取出冰塊使用。

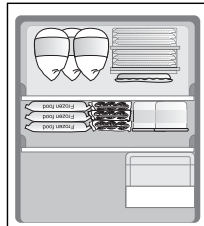
注意

- 切勿蓋住冰塊盤，以加快製冰過程。
- 如果您想使用大量冰塊，請將冰儲存在托盤下方的儲冰盒中。
- 切勿使用儲冰盒製冰，將水倒入儲冰盒中製冰可能會導致盒子破裂。



冷凍食物和保持食物味道的三個技巧

- 可以儲存許多冷凍食品 and 熟食。
- 1. 快速冷凍薄且小的食物
- 2. 完全密封
- 3. 不要重覆冷凍



## -3°C微凍結格

使用 -3°C微凍結格

大約 -5°C ~ -1°C

- 適合儲存魚、肉等新鮮食材。與冷藏室相比，魚、肉的儲藏壽命會延長。
- 食物冷凍過度時

魚片或肉片可能會過度冷凍將溫度設定為高於 -3°C，避免食物過度冷凍。

- 食物無法完全冷凍時。

視乎食物類型，如肉塊和體型較大的魚，以及儲存條件和周圍溫度等，食物可能無法達到預期的冷凍效果。此時可將溫度控制最低設定為 -5°C。

- 切勿儲存過多的食品。當食品過多且雪櫃內沒有冷氣循環的空間時，製冷效果會受影響。在 -3°C微凍結格內儲存的食物之間保持充分的間隔。

- 當大量儲存食物時，例如大塊肉、魚或雞肉，建議將食物放在 -3°C微凍結格的中

心，以優化製冷效果。

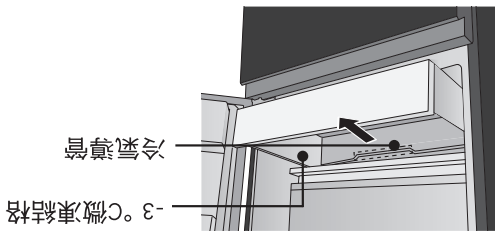
- 當 -3°C微凍結格的溫度設定為 0°C ~ 4°C

時，Prime Fresh+ 模式將不會運行，以避免

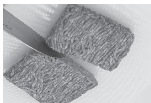
食物變質。

- 切勿用 -3°C微凍結格內的食物堵塞冷氣出口。

如果冷氣沒有擴散 -3°C微凍結格的每個角落，雪櫃內將無法充分製冷，食物保鮮可能受影響。因此，食物不應放在冷氣導管（在 -3°C微凍結格上方）前面，以免阻塞內部的冷氣循環。

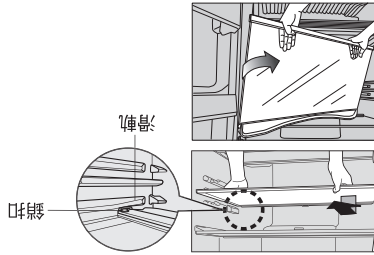


易於切開。  
冷凍食物易於切開！  
更為方便

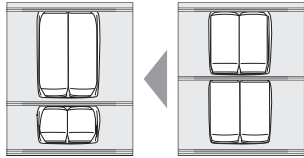


可更改冷藏室玻璃托板的位置

- 1 向上抬起托盤並往前拉。打開托盤與滑軌間的銷扣，傾斜托盤並取出。



- 玻璃盤架很重。請小心搬運，以免掉落並造成任何損壞或傷害。



食物儲存小貼士

■ 切勿儲存過多的食品。

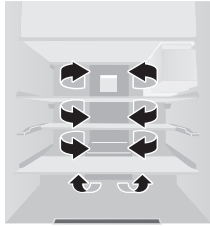
當食品過多且雪櫃內沒有冷氣循環的空間時，製冷效果會受影響。

在冷藏室內儲存的食物之間保持充分的間隔。

■ 切勿用食物堵塞冷氣出口

如果冷氣沒有擴散到儲藏室的每個角落，雪櫃內將無法充分製冷，並且會更耗電。因此，切勿將食品堵塞製冷通風口<sup>(\*)</sup>，並阻礙雪櫃中的冷氣循環。

<sup>(\*)</sup>製冷通風口位於冷藏室內的管道上。



維持雪櫃內的冷氣是令食物保鮮的關鍵！



## -3°C微凍結模式 (Prime Fresh+)

當設定時，-3°C微凍結格將迅速降低溫度，以獲得儲存食物的更好效能。

■如何設定 -3°C微凍結模式 (Prime Fresh+)

- 按住「Prime Fresh」按鈕3秒鐘以啟動-3°C微凍結模式 (Prime Fresh+) 按鈕上方的LED
- 燈將亮起。
- 如果您想立即停止-3°C微凍結模式 (Prime Fresh+) 運行，請按住「Prime Fresh+」按鈕直至LED燈熄滅。

PRIME FRESH  
Prime Fresh+

燈亮起：-3°C微凍結模式  
(Prime Fresh+)運行。  
燈熄滅：-3°C微凍結模式  
(Prime Fresh+)停止。

### 注意

- 在運行105分鐘（環境溫度為18°C或更低）後或運行145~150分鐘（環境溫度為18°C以上）之後，-3°C微凍結模式 (Prime Fresh+) 將自動停止運行。（Prime Fresh+）LED指示燈熄滅。）
- [Prime Fresh+] LED指示燈閃爍時表示除霜系統正在運行。-3°C微凍結模式 (Prime Fresh+) 會在除霜操作結束後立即開始。-3°C微凍結模式 (Prime Fresh+) 結束時，-3°C微凍結格的溫度將返回到之前的設定。
- 開啟-3°C微凍結模式 (Prime Fresh+) 後，快速冷凍模式 (Quick Freezing) 模式將停止。
- 當-3°C微凍結格的溫度設定在0°C~4°C之間時，-3°C微凍結模式 (Prime Fresh+) 不會啟動。如果在-3°C微凍結格溫度設定在0°C~4°C時按住「Prime Fresh」按鈕，雪櫃將發出警報聲。
- 在開啟-3°C微凍結模式 (Prime Fresh+) 時，如果將-3°C微凍結格的溫度設定在0°C~4°C，則-3°C微凍結模式 (Prime Fresh+) 將停止，[Prime Fresh+] LED燈將熄滅。

檢測門的開關以及雪櫃周圍的亮度，並自動操作控製，從而最大程度節約能源。(\*)

## ■ ECONAVI 智慧節能模式

- 雪櫃在運作期間，將學習您家庭的日常生活方式以及頻繁使用的時段，以最大程度提高能源效率。
- 雪櫃在前 3 週會學習您家庭的日常生活方式，從第 4 週開始，將可按照您家庭的日常生活方式來運作。

## ■ 啟用 ECONAVI 智慧節能模式的設定

- 當冷藏室和冷凍室的溫度控製分別設定為 4 °C 和 -20 °C 時，將自動啟用 ECONAVI 智慧節能模式。
- 如果快速冷凍模式 (Quick Freezing) 模式正在運行，則不會運行 ECONAVI 模式。
- 不能強行啟動 ECONAVI 智慧節能模式。

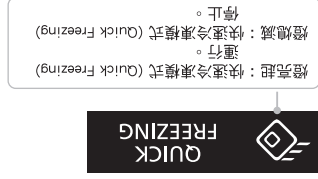
(\*) ECONAVI 智慧節能模式的效能視乎室內環境溫度、雪櫃門開關的次數以及食品儲存狀態而不同。

## 快速冷凍模式 (Quick Freezing)

當設定快速冷凍模式 (Quick Freezing) 時，雪櫃會迅速降低溫度，以獲得儲存食物及加速製冰的更好效能。

## ■ 如何設定快速冷凍模式 (Quick Freezing)

- 按兩下「Quick Freezing」圖示按鈕，以啟動快速冷凍模式 (Quick Freezing)。然後，LED [Quick Freezing] 燈將亮起。
- 如果要立即停止快速冷凍模式 (Quick Freezing)，請按兩下「Quick Freezing」圖示按鈕，直到 LED 燈熄滅。






## 注意

- 運行 150 分鐘後，快速冷凍模式 (Quick Freezing) 操作將自動停止並返回正常模式。(「Quick Freezing」LED 指示燈熄滅。)
- 「Quick Freezing」LED 指示燈閃爍時表示除霜系統正在運行。
- 快速冷凍模式 (Quick Freezing) 會在除霜操作結束後立即開始。
- 快速冷凍模式 (Quick Freezing) 結束時，冷凍室的溫度將返回到之前的設定。
- 開啟快速冷凍模式 (Quick Freezing) 後，-3 °C 微凍結模式 (Prime Fresh+) 將停止。

- 冷藏室的預設溫度為 4 °C，-3 °C 微凍結格為 -3 °C，冷凍室為 -20 °C。各儲藏室的溫度設定均可以調節。
- 冷藏室的溫度設定範圍在 1 °C ~ 7 °C，-3 °C 微凍結格的溫度設定範圍在 -5 °C ~ 4 °C (弱冷凍溫度為 -5 °C ~ -1 °C，使用 -3 °C 微凍結格作為冷藏室的溫度在 0 °C ~ 4 °C)，冷凍室的溫度設定範圍在 -23 °C ~ -15 °C。
- 雪櫃內的溫度會視乎環境溫度、安裝狀態、使用條件和食物量而不同。
- 由於測試方法和工具不同，實際溫度可能與顯示的溫度不同。
- 該雪櫃配有處理器來控製雪櫃內部的溫度。當環境溫度發生變化時，壓縮機運轉或停止，櫃門打開或關閉，雪櫃內部溫度與溫度設定將略有不同。

### ■ 溫度設定說明

1. 顯示當前溫度  
按相應圖示的按鈕，以顯示對應儲藏室的當前溫度：冷藏室，-3 °C 微凍結格和冷凍室。選擇相應指示燈時，指示位置及儲藏室溫度的 LED 燈將亮起。

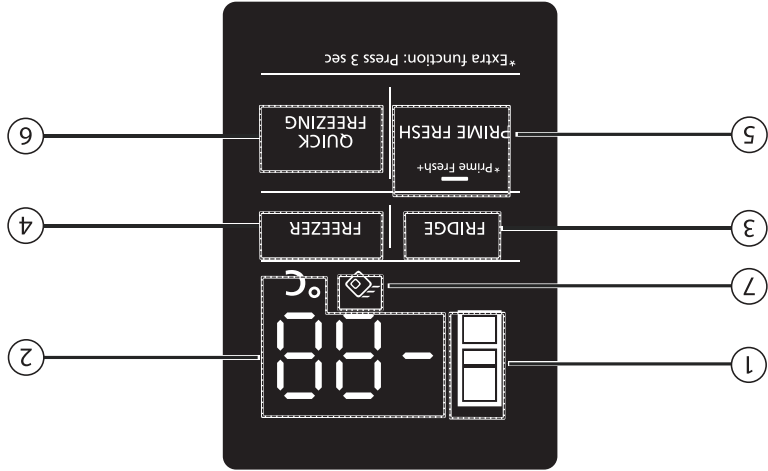
圖示	儲藏室	LED 指示儲藏室的位置	LED 指示儲藏室溫度
FRIDGE	冷藏室		4 °C
PRIME FRESH	-3 °C 微凍結格		-3 °C
FREEZER	冷凍室		-20 °C

### 2. 溫度設定

按下儲藏室圖示按鈕（冷藏室、-3 °C 微凍結格、冷凍室）以顯示當前溫度，再次按下以開始溫度設定。  
然後，指示儲藏室位置的 LED 燈及指示儲藏室溫度的 LED 燈將閃爍。  
繼續按該儲藏室的圖示按鈕，以選擇所需的溫度級別。每次按下按鈕時，溫度將在儲藏室的溫度設定範圍內升高 1 °C。  
如果所選溫度超出儲藏室溫度範圍，操作面板將顯示溫度返回至上述範圍內的最低級別。

### 3. 完成溫度設定

完成溫度設定後，按另一個按鈕完成並儲存您剛剛的設定結果。  
或者，如果在 5 秒內沒有按下其他按鈕，操作面板將儲存設定結果並返回待機模式。

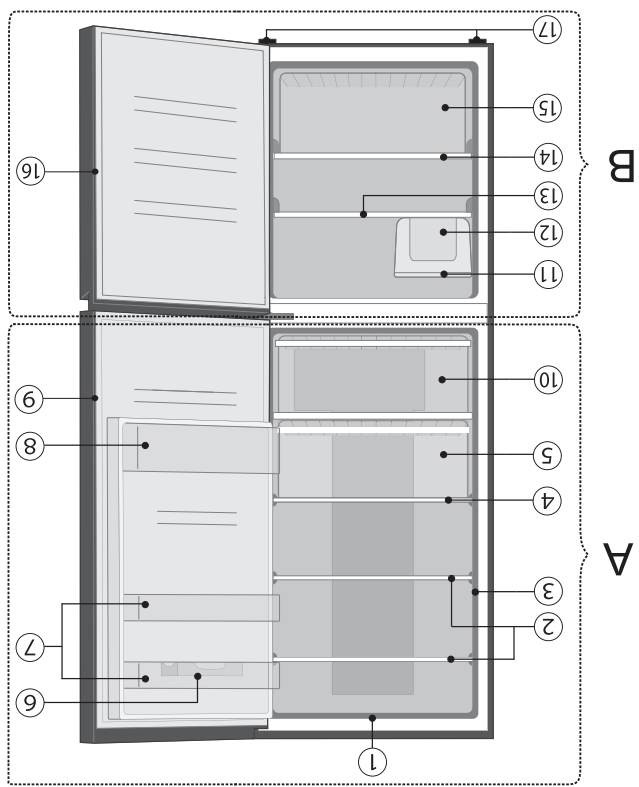


- ① 雪櫃儲藏室的 LED：當儲藏室打開時，相應儲藏室的指示燈將亮起。
- ② 溫度顯示區域：顯示冷藏室、冷凍室、-3°C 微凍結格的溫度。
- ③ 冷藏室的溫度控制製按鈕
- ④ 冷凍室的溫度控制製按鈕
- ⑤ -3°C 微凍結格的溫度控制製按鈕，-3°C 微凍結模式 (Prime Fresh+) 的控制製按鈕和 LED 燈
- ⑥ 快速冷凍的控制製按鈕
- ⑦ 快速冷凍的 LED 燈

注意

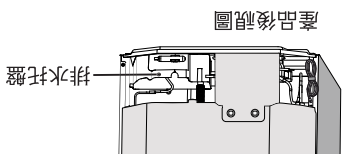
- 在操作面板上：“\*Extra function: Press 3 sec”，表示當您要啟動附加功能時，您需要按住以“PRIME FRESH”標記開頭的按鈕並停留 3 秒鐘。
- 正常情況下，操作面板將顯示最新設定狀態。當您按下按鈕時，雪櫃將發出聲響，然後可更改設定。
- 首次接入電源時，操作面板將顯示各模式介紹和儲藏室的溫度，持續約 8 秒。在此期間，按鈕將處於停用狀態。8 秒後，操作面板可以正常調節。

各部名稱



- A-冷藏室**
- ① LED燈
  - ② 冷藏室玻璃托板 (數量：2)
  - ③ 操作面板
  - ④ 蔬果格玻璃托板
  - ⑤ 蔬果格
  - ⑥ 儲蛋托
  - ⑦ 櫃門架 (數量：2)
  - ⑧ 置瓶架
  - ⑨ 冷藏室櫃門封邊
  - ⑩ -3°C微凍格
  - (Blue Ag 的 LED)

- B-冷凍室**
- ⑪ 製冰器
  - ⑫ 儲水盒
  - ⑬ 冷凍室玻璃托板
  - ⑭ 冷凍室玻璃托板
  - ⑮ 冷凍格
  - ⑯ 冷凍室櫃門封邊
  - ⑰ 可調節櫃腳



產品後視圖

## LED 燈和接地

- 雪櫃內 LED 燈專為本雪櫃設計，不得自行更換。如需更換，請聯絡 Panasonic 服務中心。
- 如果雪櫃插頭沒有接地線，應接好接地線，以防漏電造成觸電危險。

## 移動或變更位置

### ※ 移動及搬家之前

- 1 清理自動製冰器、儲冰盒中的冰、儲水器及冰水霸水箱。
- 2 拔除電冰箱的插頭。
- 3 調整調整腳(左/右)確實縮到頂部。
- 4 在排水孔下方擺放一個容器，然後緩慢向後傾斜電冰箱以透過排水孔排水。此動作需要 4 人以上執行，其中 2 人員

實抬高電冰箱前端，以防止電冰箱滑動且避免意外風險。

### ※ 移動及搬運方式

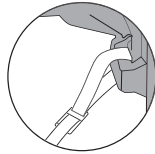
- 需要至少 2 人搬運電冰箱。
- 每個人抬起雪櫃的一角。
- 請勿抓住電冰箱的箱門來搬運。

## 注意

- 搬運時，用綁帶固定雪櫃門，避免雪櫃門自行打開。
- 搬運時切勿將雪櫃側放，否則可能會損壞雪櫃。
- 安裝完畢後，至少等待 4 小時再插上電源，確保壓縮機內的氣和油處於穩定狀態。

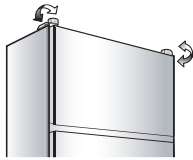
## 防止傾斜

為防止雪櫃因地震而傾斜，請使用固定帶和其他物品固定雪櫃。



## 固定雪櫃。

轉動可調節櫃腳（左和右），直至觸及地面以穩定雪櫃。



在雪櫃內部冷卻期間，請勿打開/關閉雪櫃門。

在雪櫃內部充分冷卻下來之前，請勿打開/關閉雪櫃門。（暖空氣流入雪櫃內將阻斷製冷功能。）

請等待直至雪櫃內部冷卻下來。

- 在雪櫃內沒有食物且門未打開的情況下，雪櫃可能需要連續行至少 4 小時（或更長，尤其是在環境溫度較高的夏季）以冷卻內部。
- 根據環境溫度和使用條件，可能需要 24 小時才能使內部冷卻並達到正確的溫度。

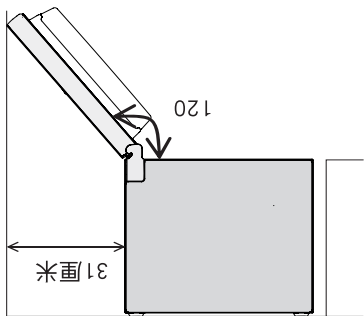


## 安裝所需的距離

- 雪櫃頂部和天花板之間必須至留有50毫米



- 20毫米
- 雪櫃側面與牆壁之間必須至少留有20毫米的空隙。



- 如果雪櫃靠近牆壁安裝，必須確保雪櫃左側或右側與牆壁之間的距離至少為31厘米。如果這個空間不夠31厘米，門可能無法完全打開，玻璃隔板、蔬果格等可能無法取出。

## 注意

- 雪櫃背面與牆壁之間必須至少留有50毫米的空隙。
- 第一次使用時：清潔雪櫃內部。
- 使用柔軟布清潔雪櫃。
- 沖洗冰塊盤。
- 第一次使用雪櫃時可能會聞到塑膠味。若有顧慮，請增加室內空氣流通。
- 切勿將雪櫃放置在潮濕的地方。因為這樣容易生鏽可能導致漏電。
- 切勿將雪櫃直接放置在陽光下照射。因為高溫 and 陽光將使雪櫃溫度上升。
- 切勿將雪櫃靠近熱源，例如廚灶或烤箱。
- 切勿堵塞雪櫃四周的空隙。
- 雪櫃必須放置在空氣流通的位置。
- 如果將雪櫃放置在不平坦的表面上，請調節櫃腳使雪櫃穩定站立。

## 使用須知

### 使用時:

- 當拔掉插頭後，請等 5 分鐘，然後再插上。否則，可能壓縮機會停止工作。
- 根據實際運作情況調節溫度，以節約能源。
- 若您將外出一段時間，或是雪櫃裡沒有冷藏任何物品，應拔出插頭以節約能源。
- 如果您將外出幾天，且雪櫃裡沒有儲存任何物品，應拔下插頭以節約能源。雪櫃幾天不使用时，需要將雪櫃內剩餘的食品全部取出，清潔雪櫃並打開雪櫃門幾個小時，讓雪櫃內的水分乾燥，避免部件發霉和氧化。
- 當濕度很高時（例如在雨季）在雪櫃機身外部可能有水氣，特別是在櫃門密封墊周圍。請用乾淨的布片擦掉凝結的水氣。
- 新鮮盒里面的濕氣可能會凝結成水氣，所以需要布片定期進行擦拭。每月對新鮮盒清潔一次。
- 切勿長時間打開雪櫃門，特別是在炎熱潮濕的天氣。
- 雪櫃頂部由鋼製成，以防外部影響引起的火災。切勿在雪櫃頂部放置物品以確保這一因素。



### 儲存食物時:

- 切勿把熱/燙的食物放進雪櫃。
- 切勿放置過多的東西。
- 食品之間必須要有間隙以保持冷卻效果。
- 將水果和蔬菜儲存在蔬菜保鮮盒中，鎖緊水份，令食物長時間保鮮。
- 應蓋緊飲水瓶，飲料瓶，以防止異味進入瓶內。
- 將蔬菜，水果及新鮮食品等食物放進雪櫃急凍或冷藏前，應使用保鮮紙包好或放入保鮮盒中。
- 如要長時間儲存，應將肉或魚等食物放入冷凍室。
- 將熱餛飩放入雪櫃之前，請將其冷卻至室溫。
- 用緊蓋，塑料膜或箔片蓋住多汁食品。



否則可能導致燙傷或意外事故。



小心

開/關櫃門時:

- 在打開雪櫃時，切勿將手指放入雪櫃門夾縫處。
- 注意門的間隔。關門時可能夾住您的手。



儲存食物時:

- 切勿冷凍玻璃瓶，否則可能導致傷害事故發生。(若玻璃瓶內的液體凍結，玻璃瓶可能破裂，對您造成傷害。)
- 切勿在玻璃托架上放置較重物品或施加較大衝擊力。(否則，這些玻璃托架可能會破碎，您可能會因此而受傷。)



移動雪櫃時:

- 搬運時請牢牢抓緊雪櫃。
- 表面容易受損的地面應採取適當防護措施等。



使用須知

開/關櫃門時:

- 切勿存放比托架或托盤大的物品，否則雪櫃門將無法完全關閉，從而造成冷氣洩漏。
- 切勿頻繁打開雪櫃或打開很長一段時間，以防雪櫃內部形成水滴，因而浪費能源。
- 經常檢查櫃門密封膠，它必須與雪櫃櫃身完全貼合。

清潔時:

- 切勿使用化學物質或液體清理雪櫃。這些物體將會損壞和腐蝕雪櫃表面。
- 每三個月清洗一次雪櫃背部壓縮機上方的排水托盤，以防止因潮濕產生異味。



否則可能導致火災，  
變傷，爆炸或觸電。

## 警告

### 適用於電源插頭和電源線：

- 切勿用濕手插拔插頭。
- 切勿讓電源線或插頭受損。



- 清潔時請拔下電源插頭。
- 完全插入符合雪櫃額定電流及額定電壓的牆上電源插座。
- 專為雪櫃預留一個插座。
- 請完全展開電源線，避免將過多電器連接到供雪櫃使用的同一插座上。
- 定期清除電源插頭上的灰塵。
- 如果電源線損壞，必須由廠家，服務代理或相關的合格人員進行更換，以防發生危險。



- 若您聞到一股燒焦的氣味，請斷開電源插頭，並對廚房進行通風。
- 若出現任何異常現象或故障，請停止使用本雪櫃。異常及故障範例：
  - 電源線或插頭異常滾燙。
  - 電源線被深切或變形。
  - 聞到燒焦氣味。
  - 觸摸雪櫃時感到有麻刺感。

### 使用時：

- 切勿損壞製冷管路（位於機背的管道）。
- 切勿觸摸壓縮機或管道，此區域溫度較高。
- 切勿讓孩童攀在雪櫃門上玩耍，雪櫃可能會因此翻倒壓在孩童身上。
- 不要將任何水容器放在雪櫃頂部以防止溢出來的水引起電擊或燃燒。
- 切勿在設備後部放置多個便捷式插座或便捷式耗材。
- 保持設備外殼或內置結構中的通風口暢通無阻。



- 該雪櫃不適合身體，感官或精神能力降低或者缺乏經驗和知識的  
人員（包括孩童）使用，除非得到其安全負責人員關於使用雪櫃的監督  
或指示。
- 應對孩童進行監督，確保其不使用雪櫃玩耍。



### 安裝時需注意：

- 固定雪櫃以避免因不平衡而致  
的危險。
  - 擺放設備時，請確保電源線沒  
有被困或損壞。
- 確保將雪櫃插頭接入已接地的  
電源插座。



## 安全使用須知

請確保遵循這些說明。

### 警告



這個標識表示  
[可能導致嚴重傷害或者死亡。]

### 小心



這個標識表示  
[可能導致傷害或故障。]



這個標識表示需要採取行動。



這些標識表示禁止。



這個標誌表示雪櫃必須接地以防止電擊。

火災危害/易燃物品



## 警告



否則可能導致火災，  
燙傷，爆炸或觸電。

在緊急情況下：



- 只能由專業維修工人在車間進行維修工作。



- 切勿在本設備中儲存爆炸性物品，如備有易燃壓縮氣體的噴霧罐。
- 切勿在本設備中的使用除臭器等電器，如果製冷劑洩漏，可能會對接點產生火花而引起爆炸。
- 切勿在本設備中的食品儲藏室內使用電器，除非該型號電器是由製造商推薦。



- 切勿自行嘗試拆解，維修或改裝雪櫃。
- 需要維修雪櫃時，請諮詢您的零售商或授權服務中心。
- 除生產商建議的方式外，切勿使用機械設備或其他方式加速除霜過程。



回收產品時：

- 在將雪櫃做再生資源利用之前，請拆除所有附在門上的密封條，以防止孩童被關閉在裏面。
- 務必在雪櫃的使用壽命全程保存好上述警告標籤。
- 如果雪櫃被搬遷到其他地點以及被運送到回收廠，必須將使用者手冊轉交給任何可能使用或處理雪櫃的人。
- 根據當地相關法律，本雪櫃使用異丁烷作為製冷劑。
- 丟棄本機時，請以適當的方法處理之，切勿以火焚化。



## 內容

● 安全使用須知.....	2
● 使用須知.....	4
● 安裝.....	6
● 各部名稱.....	8
● 操作面板.....	9
● 溫度控制.....	10
● ECONAVI 智慧節能模式.....	11
● 快速冷凍模式 (Quick Freezing).....	11
● -3°C 微凍結模式 (Prime Fresh+).....	12
● 冷藏室.....	13
● -3°C 微凍結格.....	14
● 冷凍室.....	15
● 如何清洗雪櫃.....	17
● 雪櫃使用說明指引.....	20
● 規格.....	23

### ■ NON-CFC

本機的製冷劑 (異丁烷 (R600a)) 和隔熱劑 (Cyclopentane) 都使用完全無氟的材料。所以使用該雪櫃不會傷害地球的臭氧層。

非常感謝您購買 Panasonic 產品。

- 使用本產品前請仔細閱讀這些說明並遵照第 2-5 頁的安全使用須知。
- 請確保保用證上的購買日期和零售商家稱蓋有印章，並將它和本操作指南一同妥。